

DATA SHEET



Three Phase Induction Motor - Squirrel Cage

Customer	: Automation Direct				
Product line	: Premium Efficiency Three-Phase		Product code :	13547043	
			Catalog # :	00136ET3EW56CFL-S	
Frame	: W56C		Locked rotor time	: 18s (cold) 10s (hot)	
Output	: 1 HP (0.75 kW)		Temperature rise	: 80 K	
Poles	: 2		Duty cycle	: Cont.(S1)	
Frequency	: 60 Hz		Ambient temperature	: -20°C to +40°C	
Rated voltage	: 230/460 V		Altitude	: 1000 m.a.s.l.	
Rated current	: 3.00/1.50 A		Protection degree	: IP55	
L. R. Amperes	: 26.4/13.2 A		Cooling method	: IC411 - TEFC	
LRC	: 8.8x(Code M)		Mounting	: F-1	
No load current	: 1.60/0.798 A		Rotation ¹	: Both (CW and CCW)	
Rated speed	: 3435 rpm		Noise level ²	: 65.0 dB(A)	
Slip	: 4.58 %		Starting method	: Direct On Line	
Rated torque	: 1.53 ft.lb		Approx. weight ³	: 21.6 lb	
Locked rotor torque	: 360 %				
Breakdown torque	: 380 %				
Insulation class	: F				
Service factor	: 1.15				
Moment of inertia (J)	: 0.0254 sq.ft.lb				
Output	25%	50%	75%	100%	
Efficiency (%)	72.4	74.0	77.0	78.5	
Power Factor	0.38	0.63	0.75	0.80	
	Foundation loads				
			Max. traction	: 46 lb	
			Max. compression	: 67 lb	
		<u>Drive end</u>	<u>Non drive end</u>		
Bearing type	:	6203 ZZ	6202 ZZ		
Sealing	:	V'Ring	Without Bearing Seal		
Lubrication interval	:	-	-		
Lubricant amount	:	-	-		
Lubricant type	:	Mobil Polyrex EM			
Notes					
USABLE @208V 3.32A SF 1.00 SFA 3.32A					
This revision replaces and cancel the previous one, which must be eliminated. (1) Looking the motor from the shaft end. (2) Measured at 1m and with tolerance of +3dB(A). (3) Approximate weight subject to changes after manufacturing process. (4) At 100% of full load.			These are average values based on tests with sinusoidal power supply, subject to the tolerances stipulated in NEMA MG-1.		
Rev.	Changes Summary		Performed	Checked	Date
Performed by					
Checked by				Page	Revision
Date	23/08/2022			1 / 5	

TORQUE AND CURRENT VS SPEED CURVE

Three Phase Induction Motor - Squirrel Cage



Customer : Automation Direct

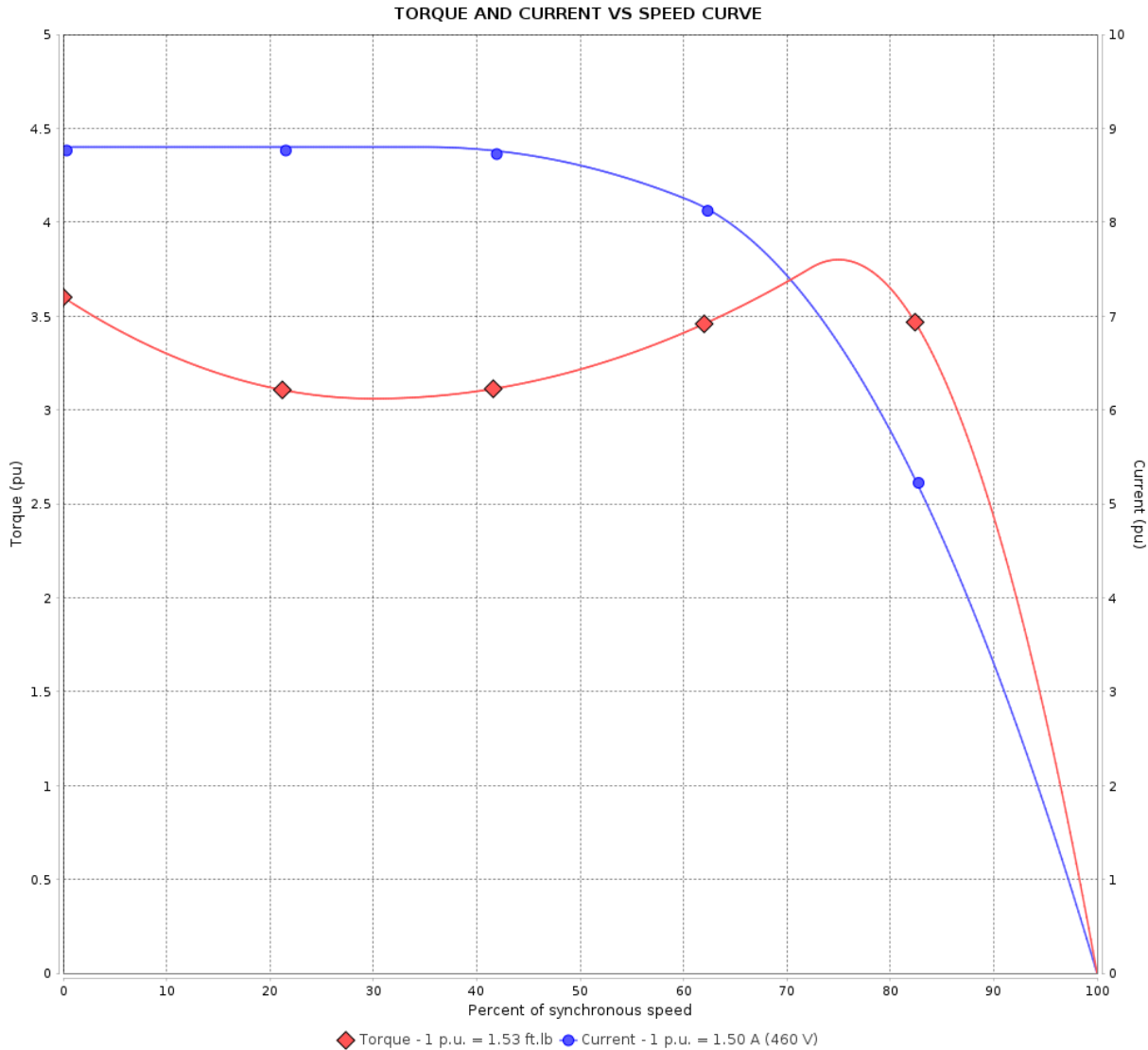
Product line : Premium Efficiency Three-Phase

Product code :

13547043

Catalog # :

00136ET3EW56CFL-S



Performance : 230/460 V 60 Hz 2P

Rated current : 3.00/1.50 A
 LRC : 8.8
 Rated torque : 1.53 ft.lb
 Locked rotor torque : 360 %
 Breakdown torque : 380 %
 Rated speed : 3435 rpm

Moment of inertia (J) : 0.0254 sq.ft.lb
 Duty cycle : Cont.(S1)
 Insulation class : F
 Service factor :
 Temperature rise : 80 K

Locked rotor time : 18s (cold) 10s (hot)

Rev.	Changes Summary	Performed	Checked	Date
Performed by			Page 2 / 5	Revision
Checked by				
Date	23/08/2022			

LOAD PERFORMANCE CURVE

Three Phase Induction Motor - Squirrel Cage



Customer : Automation Direct

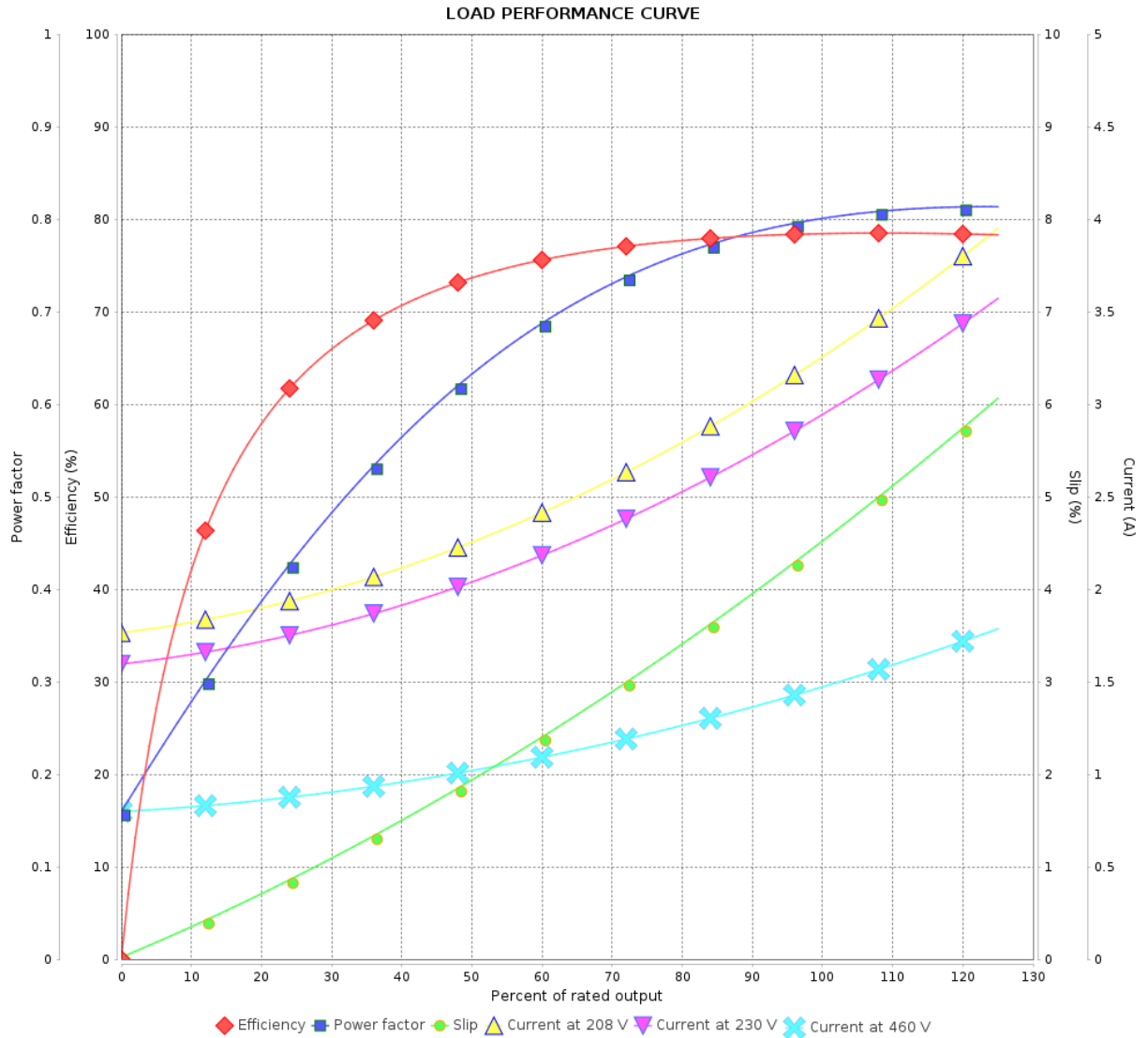
Product line : Premium Efficiency Three-Phase

Product code :

13547043

Catalog # :

00136ET3EW56CFL-S



Performance : 230/460 V 60 Hz 2P

Rated current : 3.00/1.50 A
 LRC : 8.8
 Rated torque : 1.53 ft.lb
 Locked rotor torque : 360 %
 Breakdown torque : 380 %
 Rated speed : 3435 rpm

Moment of inertia (J) : 0.0254 sq.ft.lb
 Duty cycle : Cont.(S1)
 Insulation class : F
 Service factor :
 Temperature rise : 80 K

Rev.	Changes Summary	Performed	Checked	Date
Performed by			Page	Revision
Checked by				
Date				

THERMAL LIMIT CURVE

Three Phase Induction Motor - Squirrel Cage



Customer : Automation Direct

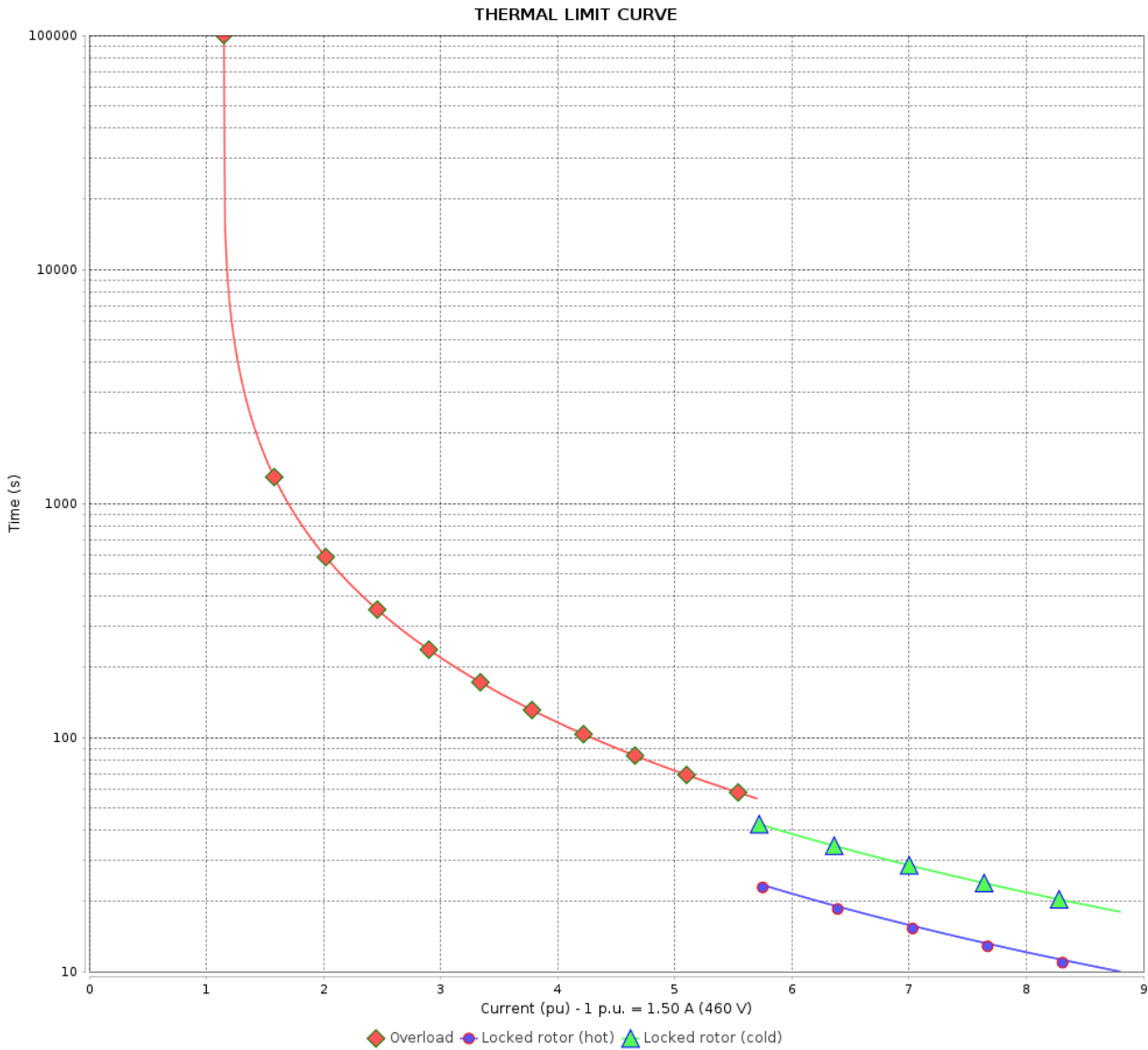
Product line : Premium Efficiency Three-Phase

Product code :

13547043

Catalog # :

00136ET3EW56CFL-S



Performance : 230/460 V 60 Hz 2P

Rated current : 3.00/1.50 A
 LRC : 8.8
 Rated torque : 1.53 ft.lb
 Locked rotor torque : 360 %
 Breakdown torque : 380 %
 Rated speed : 3435 rpm

Moment of inertia (J) : 0.0254 sq.ft.lb
 Duty cycle : Cont.(S1)
 Insulation class : F
 Service factor :
 Temperature rise : 80 K

Heating constant

Cooling constant

Rev.	Changes Summary	Performed	Checked	Date
Performed by			Page	Revision
Checked by				
Date				
			4 / 5	

VFD OPERATION CURVE

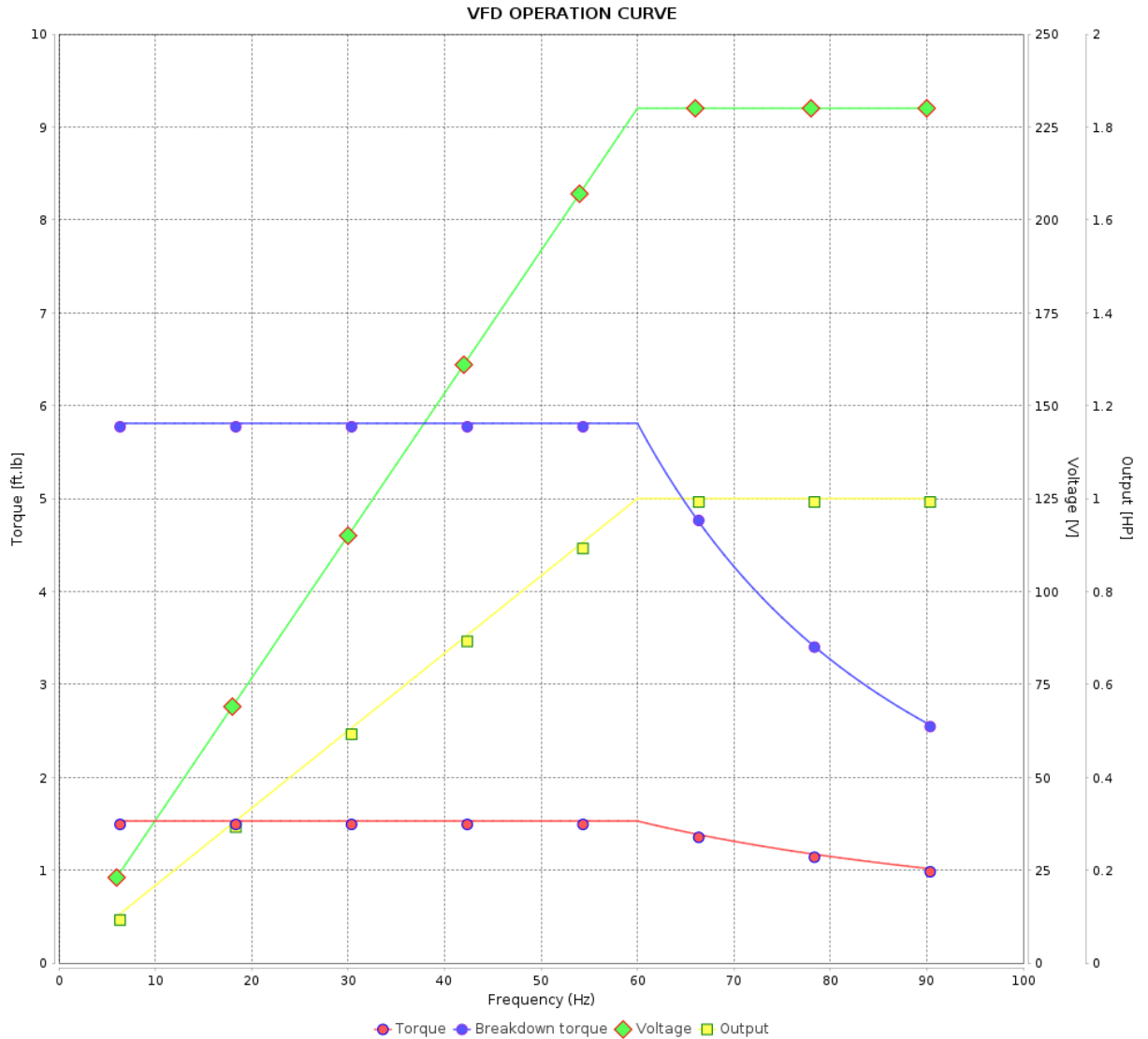
Three Phase Induction Motor - Squirrel Cage



Customer : Automation Direct

Product line : Premium Efficiency Three-Phase

Product code : 13547043
 Catalog # : 00136ET3EW56CFL-S



Performance : 230/460 V 60 Hz 2P

Rated current : 3.00/1.50 A
 LRC : 8.8
 Rated torque : 1.53 ft.lb
 Locked rotor torque : 360 %
 Breakdown torque : 380 %
 Rated speed : 3435 rpm

Moment of inertia (J) : 0.0254 sq.ft.lb
 Duty cycle : Cont.(S1)
 Insulation class : F
 Service factor :
 Temperature rise : 80 K

Rev.	Changes Summary	Performed	Checked	Date
Performed by			Page 5 / 5	Revision
Checked by				
Date	23/08/2022			

1 2 3 4 5 6

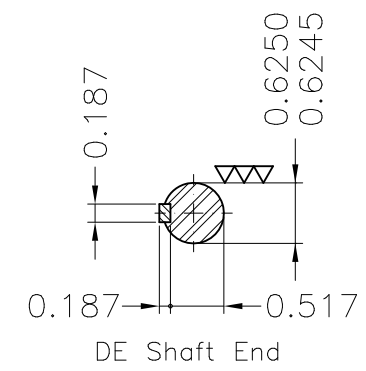
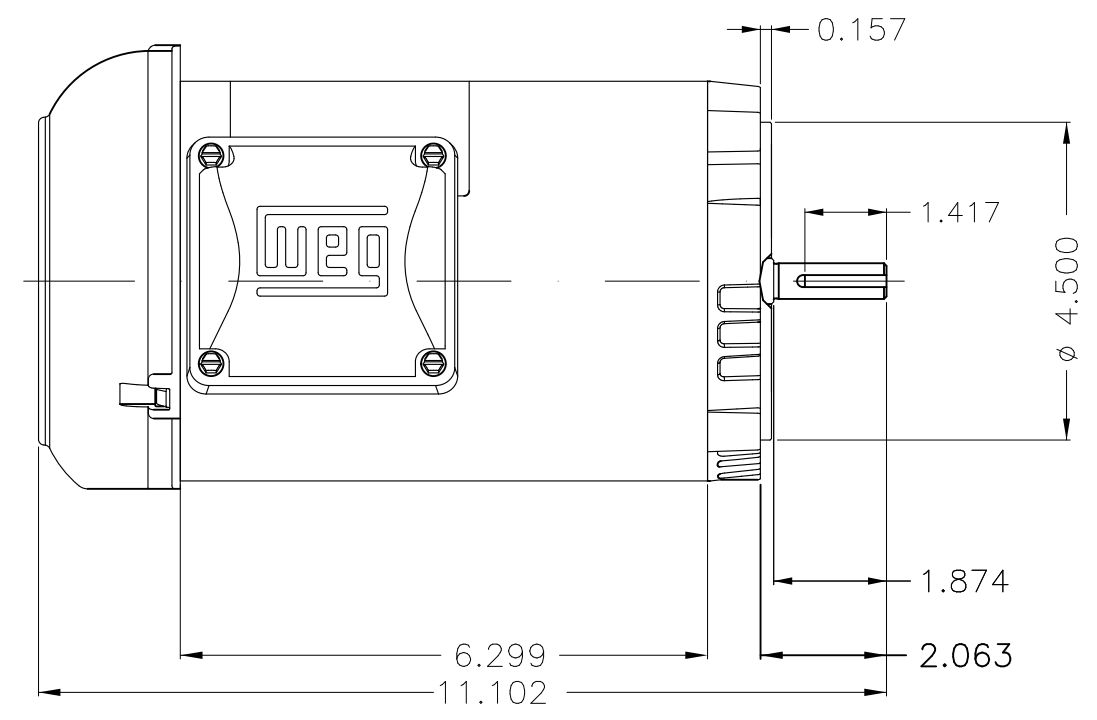
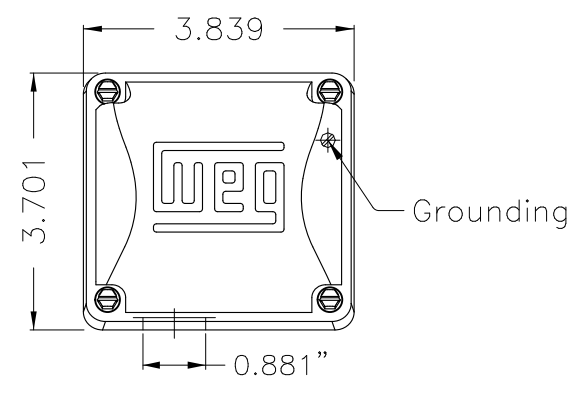
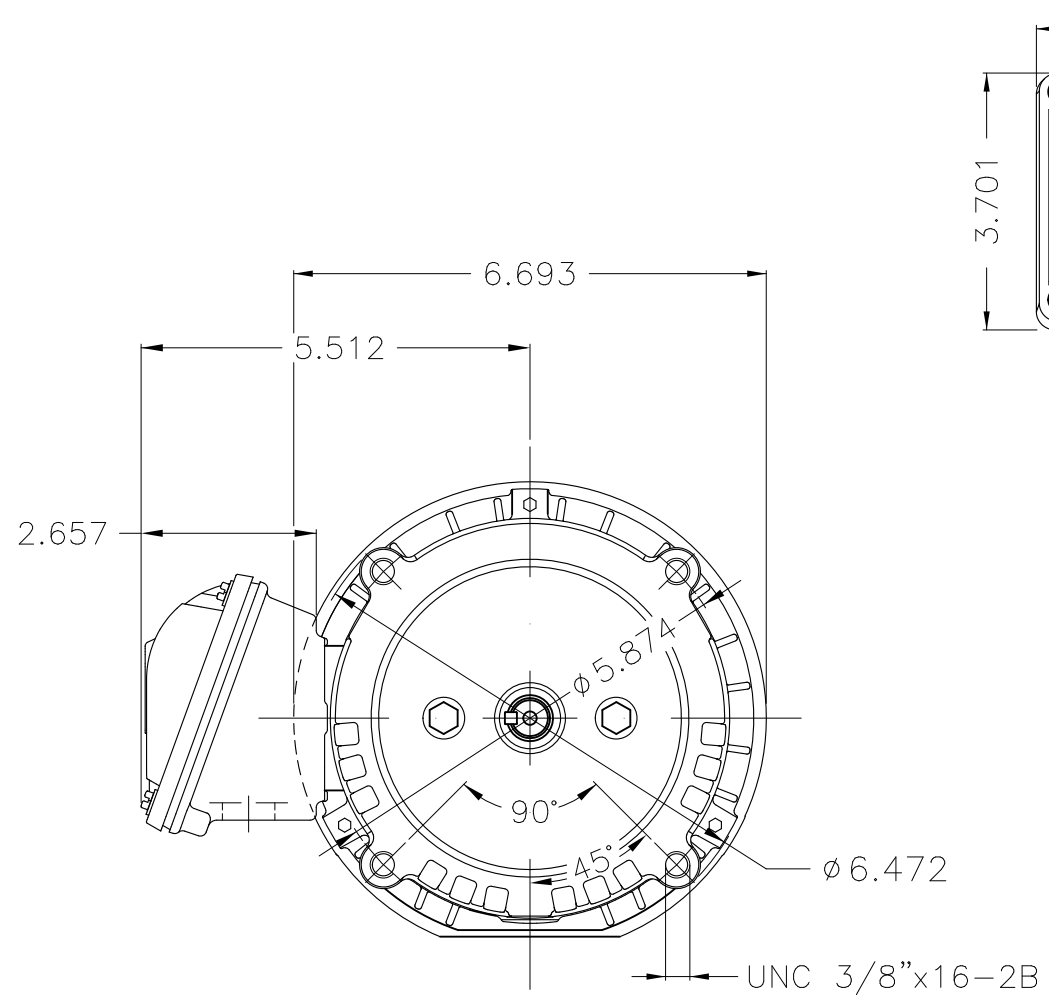
A

B

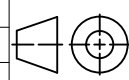
C

D

E



Color Munsell N 1 matte black
 Painting plan 207N
 Mounting F-1/B14R(D)

ECM	LOC	SUMMARY OF MODIFICATIONS	EXECUTED	CHECKED	RELEASED	DATE	VER
EXECUTED	HYBRISUSER	 THREE PH. MOTOR ROLLED STEEL PREM. EFF. FRAME W56C IP55 TEFC					
CHECKED							
RELEASED							
REL DT.	WMO	Jaragua do Sul	Product Engineering	PREVIEW WDD		SHEET 1 / 1	

1 HP 02 Poles 60 Hz



Dimensions in inches XME A3



NEMA
Premium



MADE IN MEXICO

MAT: 13547043

W01.TE0IC0X0X

MODEL 00136ET3EW56CFL-S

For 60Hz: Class I, Zone 2, IIC
Class I, Div.2, Gr. A,B,C,D - T3
DIV 2 Inverter Duty (SF1.00)
CT 2:1/VT 1000:1

PH 3	Hz 60	HP 1.0
FR W58C		KW 0.75
DUTY CONT.		V 208-230/460
ALT 1000 m.a.s.l.		A 3.32-3.00/1.50
INS CL F AT 80K	IP55	SFA 3.32-3.45/1.72
AMB 40°C	DES -	SF 1.15
ENCL TEFC	CODE M	PF 0.80
USABLE @ 208V SF1.00		RPM 3435
		NEMA NOM. EFF 78.5%

ALTERNATE RATING: 1.0HP 50Hz 190-220/380-415V SF1.15
3.40-3.11/1.70-1.85A 2770RPM EFF 77.8% (IE2) IEC 60034-1

For safe area-inverter duty motor For 60Hz use on VPWM 1000:1 VT, 5:1 CT

DE 6203-ZZ	ODE 6202-ZZ	MOBIL POLYREX EM
------------	-------------	------------------



T1-BLU T2-WHT
T3-ORG T4-YEL
T5-BLK T6-GRY
T7-PNK T8-RED
T9-BRK RED

INTERCHANGE ANY TWO LINE WIRES TO REVERSE THE ROTATION



WARNING: Motor must be grounded in accordance with local and national electrical codes to prevent serious electrical shocks. Disconnect power source before servicing unit.



AVERTISSEMENT: Le moteur doit être mis à la terre conformément aux codes électriques locaux et nationaux afin d'éviter tout choc électrique grave. Déconnectez l'alimentation avant l'entretien de la machine.

