

DATA SHEET



Three Phase Induction Motor - Squirrel Cage

Customer	: Automation Direct			
Product line	: Premium Efficiency Three-Phase		Product code :	15754026
			Catalog # :	00118NT3FVD56C-S
Frame	: 56CZ		Locked rotor time	: 34s (cold) 19s (hot)
Output	: 1 HP (0.75 kW)		Temperature rise	: 80 K
Poles	: 4		Duty cycle	: Cont.(S1)
Frequency	: 60 Hz		Ambient temperature	: -20°C to +40°C
Rated voltage	: 230/460 V		Altitude	: 1000 m.a.s.l.
Rated current	: 2.94/1.47 A		Protection degree	: IP55
L. R. Amperes	: 25.3/12.6 A		Cooling method	: IC410 - TENV
LRC	: 8.6x(Code M)		Mounting	: F-1
No load current	: 1.78/0.890 A		Rotation ¹	: Both (CW and CCW)
Rated speed	: 1765 rpm		Starting method	: Direct On Line
Slip	: 1.94 %		Approx. weight ³	: 37.9 lb
Rated torque	: 2.98 ft.lb			
Locked rotor torque	: 280 %			
Breakdown torque	: 300 %			
Insulation class	: H			
Service factor	: 1.15			
Moment of inertia (J)	: 0.1234 sq.ft.lb			
Design	: B			
Output	25%	50%	75%	100%
Efficiency (%)	0.000	82.5	84.0	85.5
Power Factor	0.00	0.52	0.66	0.75
	Foundation loads			
			Max. traction	: 68 lb
			Max. compression	: 106 lb
		<u>Drive end</u>	<u>Non drive end</u>	
Bearing type	:	6204 ZZ	6203 ZZ	
Sealing	:	V'Ring	Without Bearing Seal	
Lubrication interval	:	0 h	0 h	
Lubricant amount	:	0 g	0 g	
Lubricant type	:	Mobil Polyrex EM		
Notes				
This revision replaces and cancel the previous one, which must be eliminated. (1) Looking the motor from the shaft end. (2) Measured at 1m and with tolerance of +3dB(A). (3) Approximate weight subject to changes after manufacturing process. (4) At 100% of full load.			These are average values based on tests with sinusoidal power supply, subject to the tolerances stipulated in NEMA MG-1.	
Rev.	Changes Summary		Performed	Checked
Performed by			Page	Revision
Checked by				
Date	23/08/2022		1 / 6	

DATA SHEET



Three Phase Induction Motor - Squirrel Cage

Customer : Automation Direct

Thermal protection

ID	Application	Type	Quantity	Sensing Temperature
1	Winding	Thermostat - 2 wires	1 x Phase	155 °C

Rev.	Changes Summary	Performed	Checked	Date
Performed by				
Checked by			Page	Revision
Date	23/08/2022		2 / 6	

TORQUE AND CURRENT VS SPEED CURVE



Three Phase Induction Motor - Squirrel Cage

Customer : Automation Direct

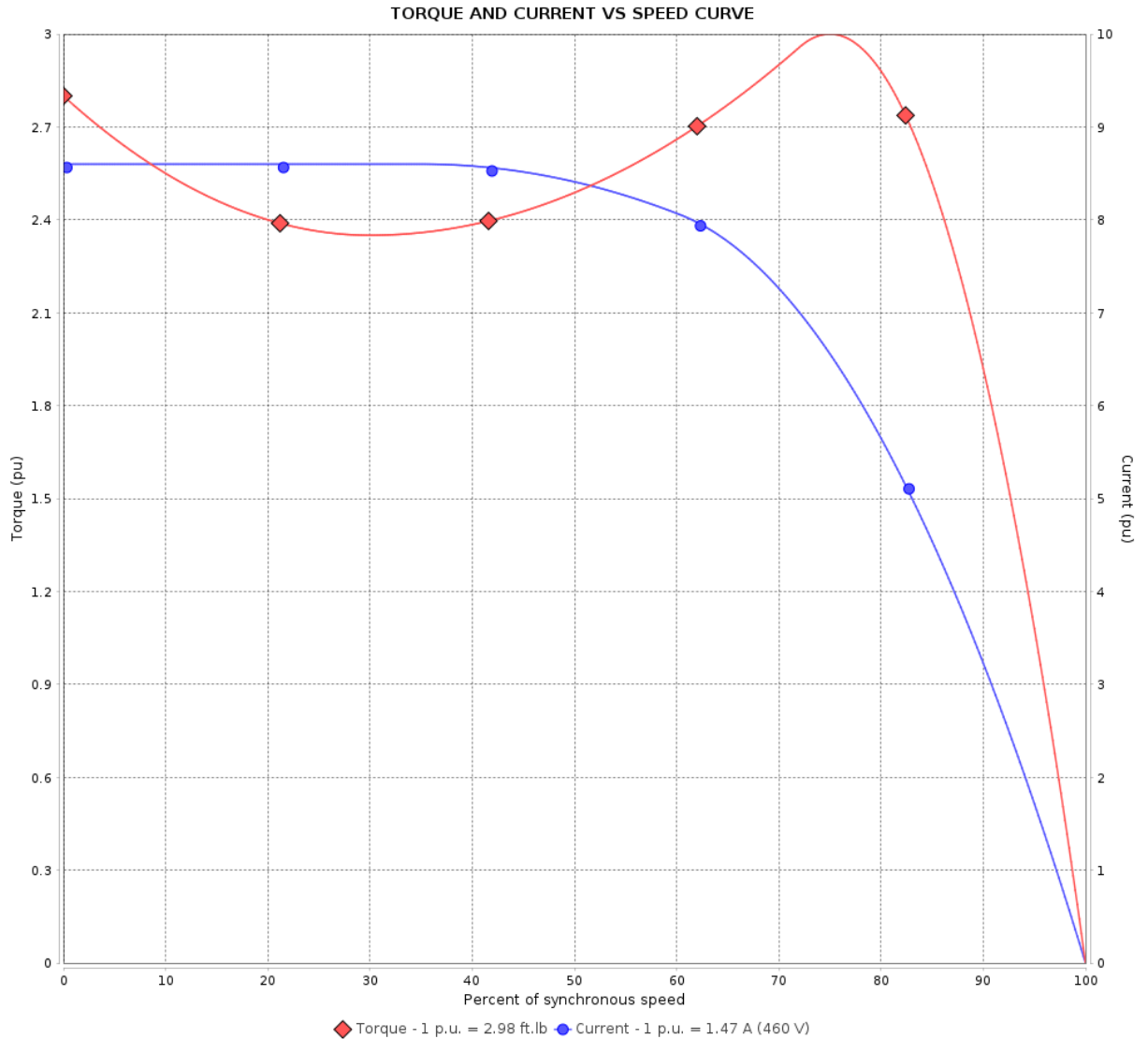
Product line : Premium Efficiency Three-Phase

Product code :

15754026

Catalog # :

00118NT3FVD56C-S



Performance : 230/460 V 60 Hz 4P

Rated current : 2.94/1.47 A
 LRC : 8.6
 Rated torque : 2.98 ft.lb
 Locked rotor torque : 280 %
 Breakdown torque : 300 %
 Rated speed : 1765 rpm

Moment of inertia (J) : 0.1234 sq.ft.lb
 Duty cycle : Cont.(S1)
 Insulation class : H
 Service factor : 1.15
 Temperature rise : 80 K
 Design : B

Locked rotor time : 34s (cold) 19s (hot)

Rev.	Changes Summary	Performed	Checked	Date
Performed by				
Checked by				
Date	23/08/2022		Page 3 / 6	Revision

LOAD PERFORMANCE CURVE

Three Phase Induction Motor - Squirrel Cage



Customer : Automation Direct

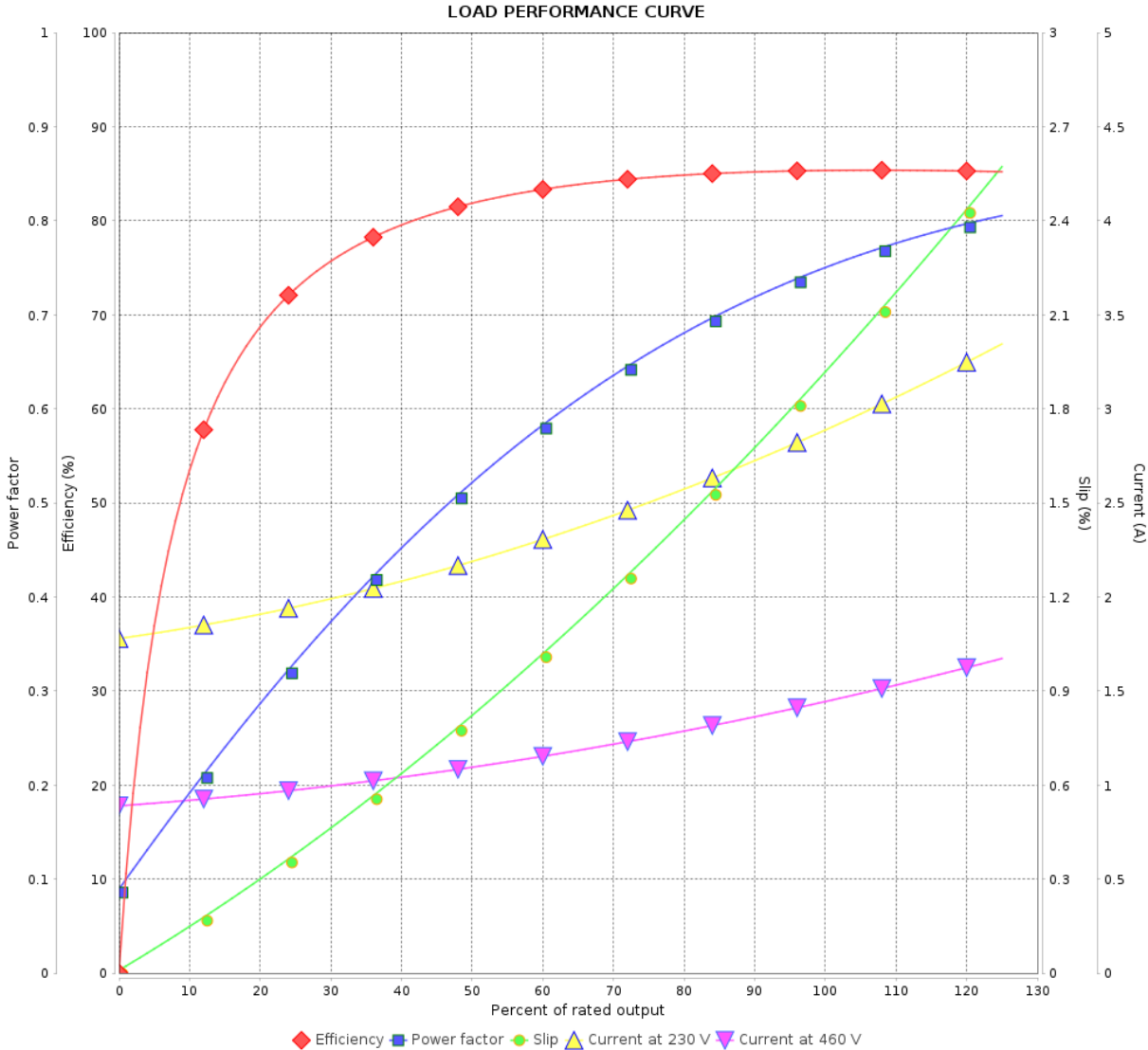
Product line : Premium Efficiency Three-Phase

Product code :

15754026

Catalog # :

00118NT3FVD56C-S



Performance : 230/460 V 60 Hz 4P

Rated current : 2.94/1.47 A
 LRC : 8.6
 Rated torque : 2.98 ft.lb
 Locked rotor torque : 280 %
 Breakdown torque : 300 %
 Rated speed : 1765 rpm

Moment of inertia (J) : 0.1234 sq.ft.lb
 Duty cycle : Cont.(S1)
 Insulation class : H
 Service factor : 1.15
 Temperature rise : 80 K
 Design : B

Rev.	Changes Summary	Performed	Checked	Date
Performed by			Page 4 / 6	Revision
Checked by				
Date	23/08/2022			

THERMAL LIMIT CURVE

Three Phase Induction Motor - Squirrel Cage



Customer : Automation Direct

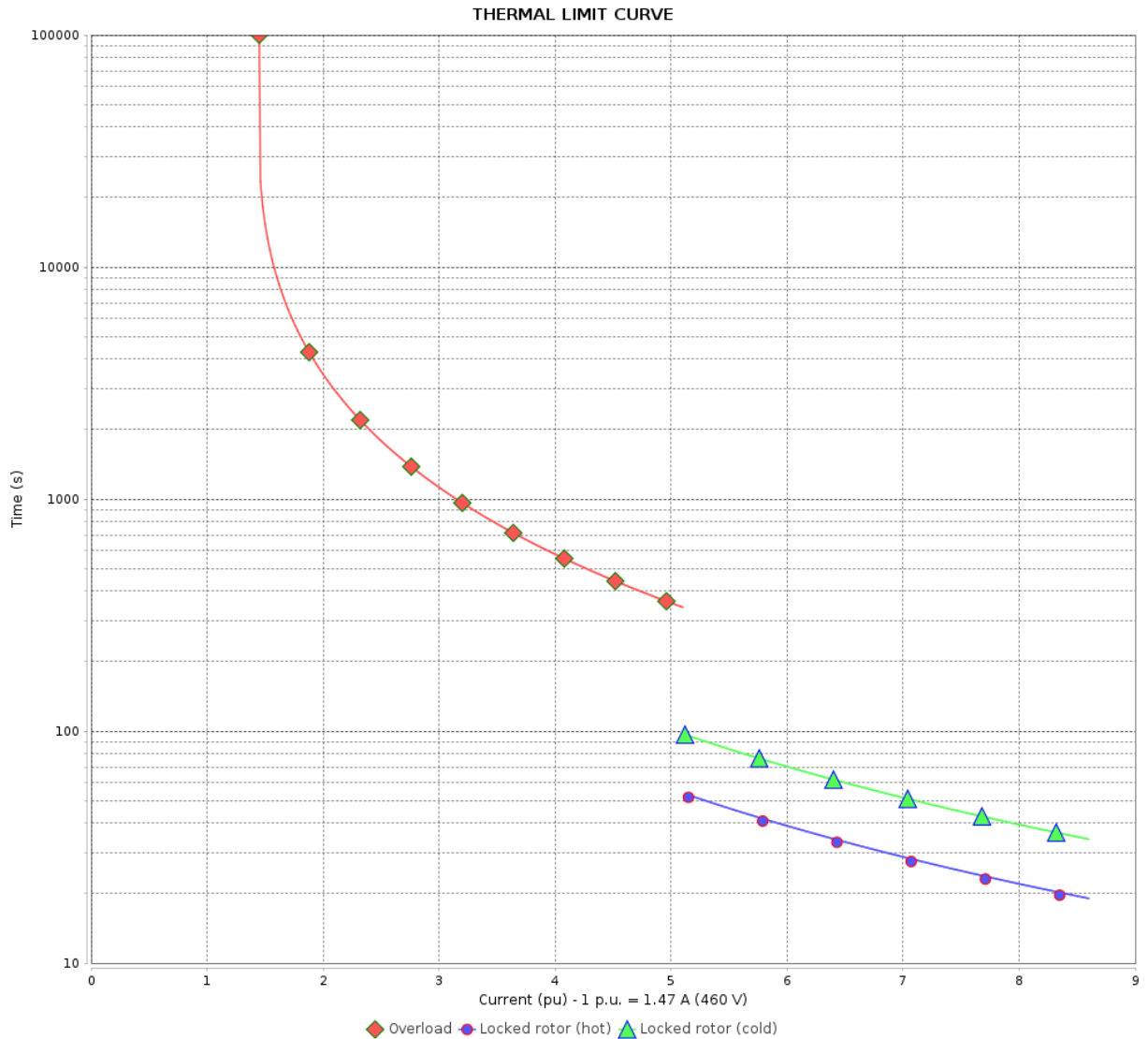
Product line : Premium Efficiency Three-Phase

Product code :

15754026

Catalog # :

00118NT3FVD56C-S



Performance : 230/460 V 60 Hz 4P

Rated current : 2.94/1.47 A
 LRC : 8.6
 Rated torque : 2.98 ft.lb
 Locked rotor torque : 280 %
 Breakdown torque : 300 %
 Rated speed : 1765 rpm

Moment of inertia (J) : 0.1234 sq.ft.lb
 Duty cycle : Cont.(S1)
 Insulation class : H
 Service factor : 1.15
 Temperature rise : 80 K
 Design : B

Heating constant

Cooling constant

Rev.	Changes Summary	Performed	Checked	Date
Performed by				
Checked by				
Date				
		Page	Revision	
		5 / 6		

VFD OPERATION CURVE

Three Phase Induction Motor - Squirrel Cage



Customer : Automation Direct

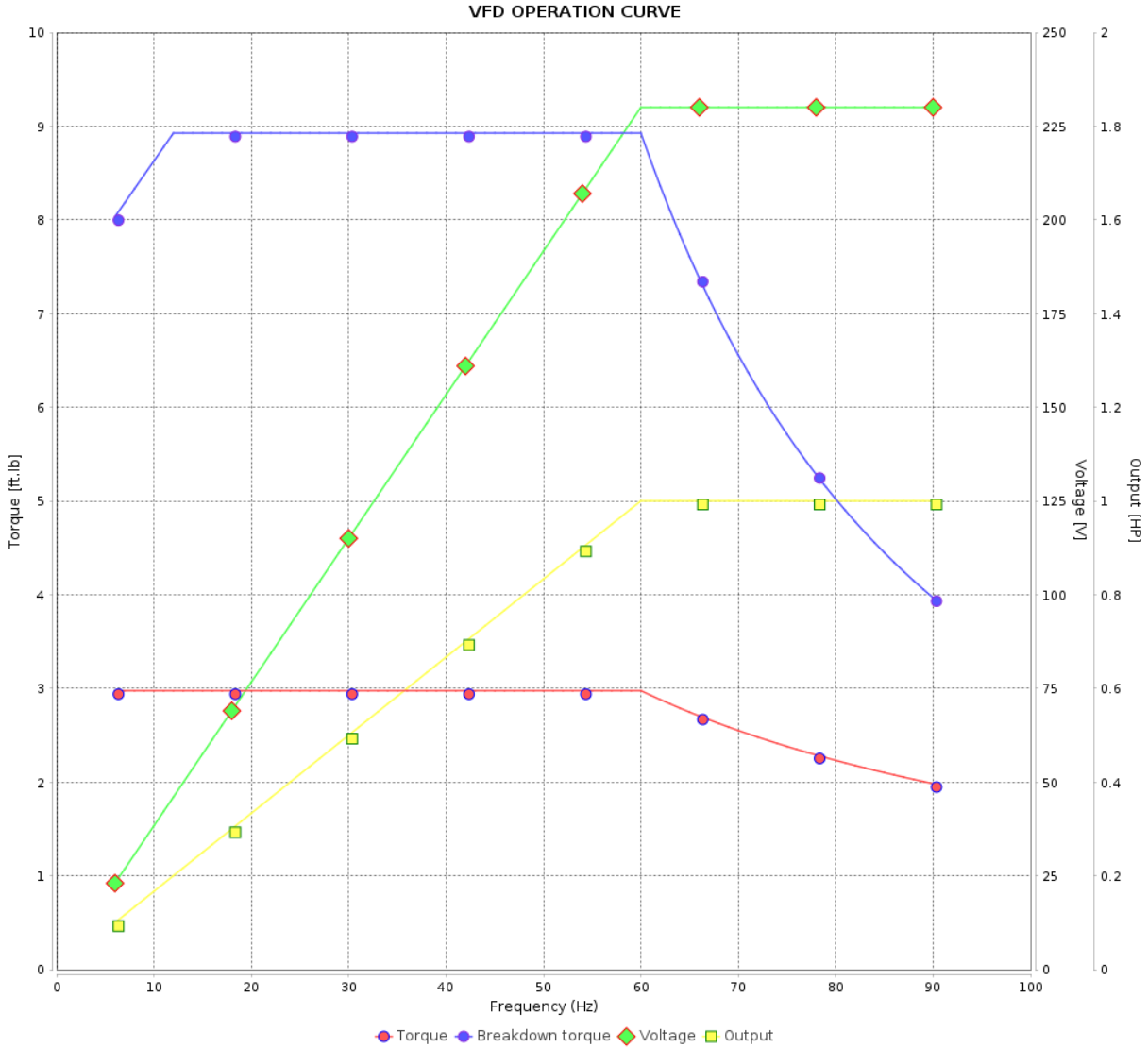
Product line : Premium Efficiency Three-Phase

Product code :

15754026

Catalog # :

00118NT3FVD56C-S



Performance : 230/460 V 60 Hz 4P

Rated current : 2.94/1.47 A
 LRC : 8.6
 Rated torque : 2.98 ft.lb
 Locked rotor torque : 280 %
 Breakdown torque : 300 %
 Rated speed : 1765 rpm

Moment of inertia (J) : 0.1234 sq.ft.lb
 Duty cycle : Cont.(S1)
 Insulation class : H
 Service factor : 1.15
 Temperature rise : 80 K
 Design : B

Rev.	Changes Summary	Performed	Checked	Date
Performed by			Page 6 / 6	Revision
Checked by				
Date	23/08/2022			

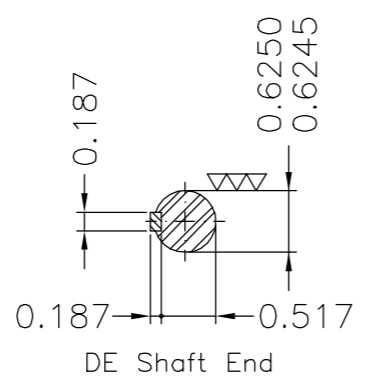
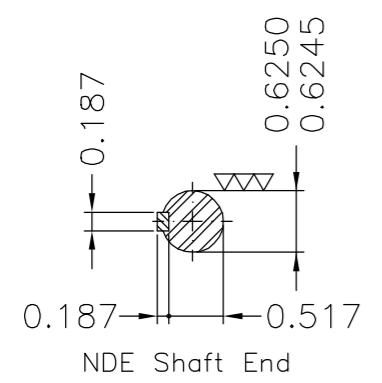
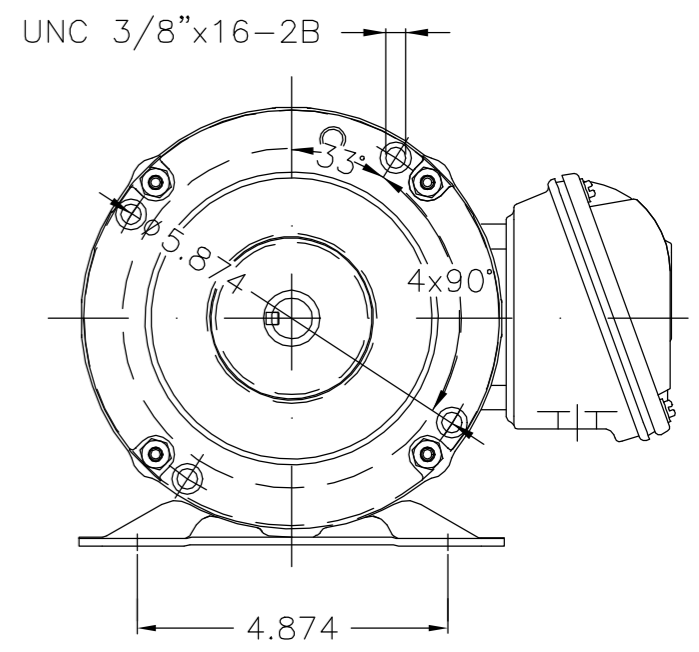
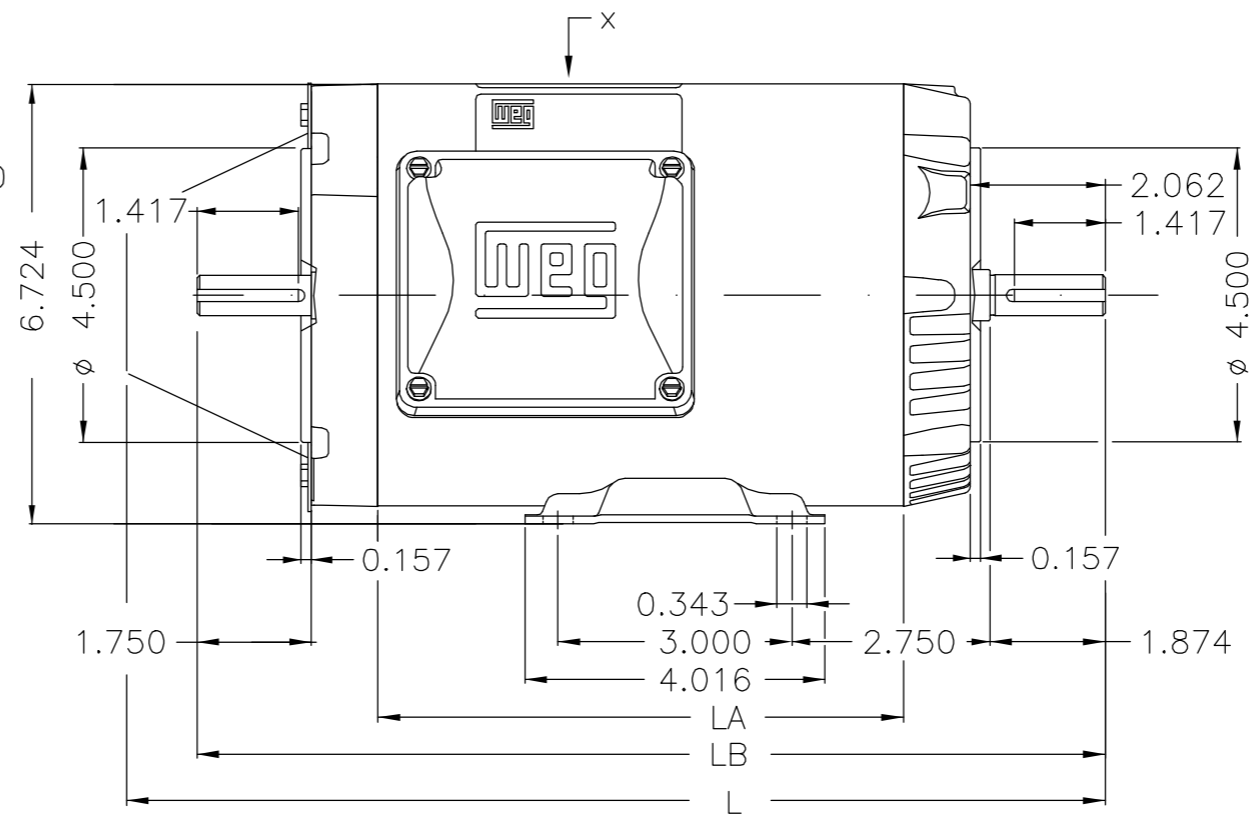
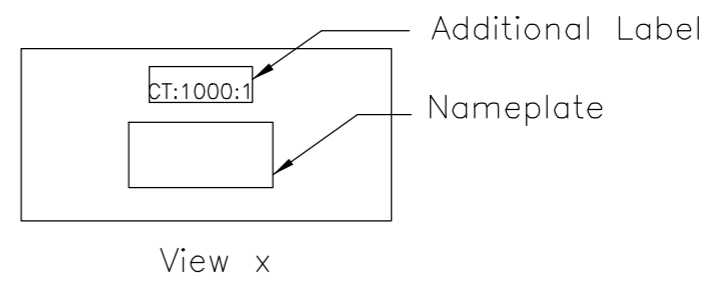
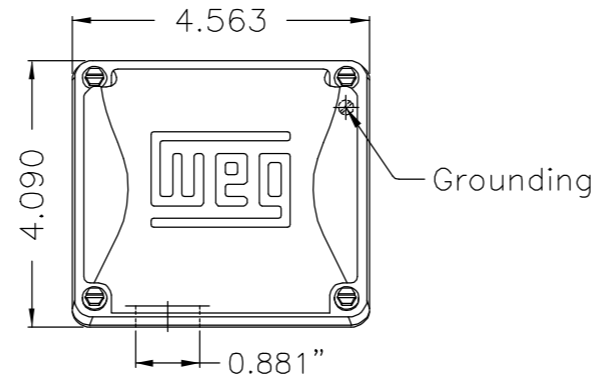
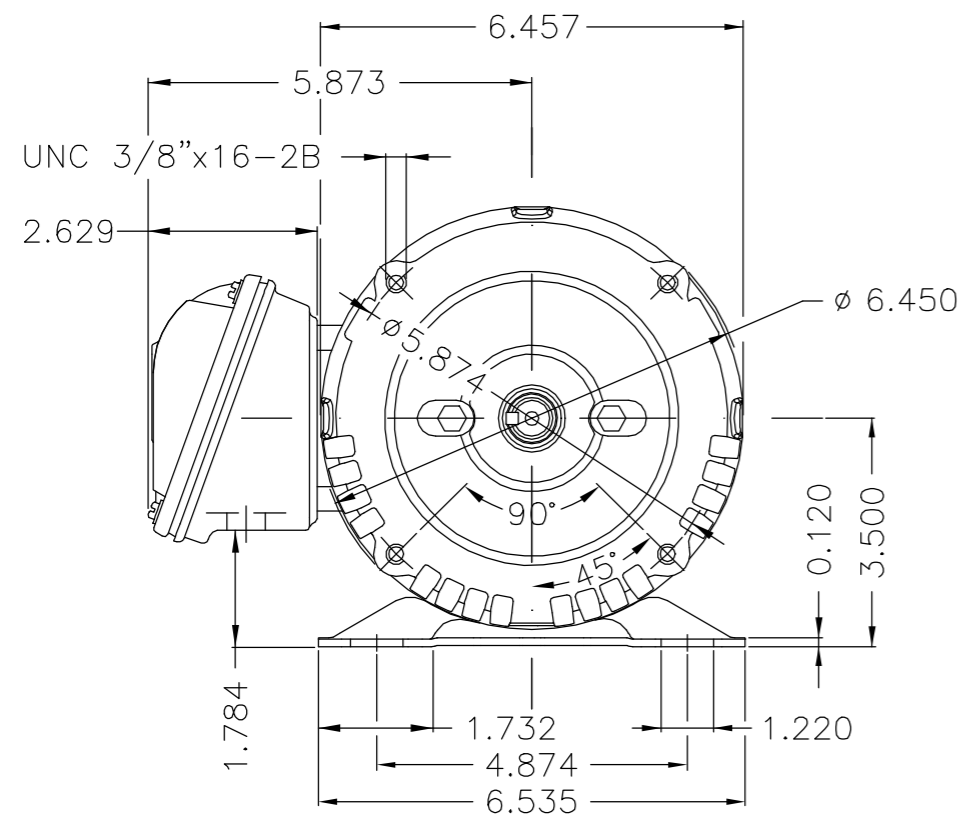
EJE/SHAFT	
ESTÁNDAR/STANDARD	
OPCIONAL/OPTIONAL	
ESPECIAL/SPECIAL	X

Dimensões em polegada
Dimensions in inches

PRELIMINARY DOCUMENT
Not to be used for installation purposes.

THIS IS AN UPDATED REVISION, THE PREVIOUS ONE MUST BE DISREGARDED.

A
B
C
D
E



Apto para trabajar para VFD 1000: 1 CT / Suitable to work for VFD 1000:1 CT
 Placa de identificación adicional para uso del inversor / Additional nameplate for Inverter use
 Color Munsell N 1 negro mate / Color Munsell N 1 matte black
 Termostato 155°C - Desconexión / Thermal protection to switch off - thermostat 155°C
 Ambos sentidos de rotacion / Rotation CW and CCW
 Velocidad maxima segura:6000 rpm/Max safe speed:6000 rpm
 Plan de pintura 207N / Painting plan 207N
 Forma constructiva F-1/B34R(D) / Mounting F-1/B34R(D)

WEG ELECTRIC CORPORATION - WEC

500002053159	ACCORDING TO CLAIM 419068888	CAZARES	ARISTAM	ARISTAM	11.01.2022	02
500001951415	ACCORDING TO 417605953	ALVAREZZ	MORALESR	MORALESR	15.06.2021	01
ECM	LOC	SUMMARY OF MODIFICATIONS	EXECUTED	CHECKED	RELEASED	DATE VER
EXECUTED	ALDOV	MOTOR TRIF CERRADO ROLLED STEEL NEMA PRE FRAME 56CZ IP55 TENV	10007033968			
CHECKED	CESTRELLA		000	03		
RELEASED	CESTRELLA					
REL DT	08.10.2019	WMX	Huehuetoca	Product Engineering	SHEET	1 / 1

					LA	LB	L	
2.00 HP	04 Poles	60Hz	415755137		9.055	14.916	15.969	D
1.50 HP	04 Poles	60Hz	415755135		7.874	13.735	14.788	C
1.00 HP	04 Poles	60Hz	415751386		7.874	13.735	14.788	B
0.25 HP	04 Poles	60Hz	415748731		5.511	11.373	12.426	A



NEMA
Premium



MADE IN MEXICO

MAT: 15754026 CC029A

W01.TE0IC0X0X

MODEL 00118NT3FVD56C-S

16JUN2021 B/N:

PH 3	Hz 60	HP 1.0
FR 56CZ		KW 0.75
DUTY CONT.		V 230/460
ALT 1000 m.a.s.l.		A 2.94/1.47
INS CL H ΔT 80K	IP55	SFA 3.38/1.69
AMB 40°C	DES B	SF 1.15
ENCL TENV	CODE M	PF 0.75
		RPM 1765
		NEMA
		NOM. EFF 85.5%

Electric Motor

DE 6204-ZZ	ODE 6203-ZZ	MOBIL POLYREX EM
-------------------	--------------------	-------------------------



INTERCHANGE ANY TWO LINE WIRES TO REVERSE THE ROTATION

WARNING: Motor must be grounded in accordance with local and national electrical codes to prevent serious electrical shocks. Disconnect power source before servicing unit.



AVERTISSEMENT: Le moteur doit être mis à la terre

conformément aux codes électriques locaux et nationaux afin d'éviter tout choc électrique grave. Déconnectez l'alimentation avant l'entretien de la machine.

