

# DATA SHEET



## Three Phase Induction Motor - Squirrel Cage

Customer	: Automation Direct			
Product line	: Premium Efficiency Three-Phase		Product code :	14797787
			Catalog # :	00118ET3E56-S
Frame	: 56		Locked rotor time	: 34s (cold) 19s (hot)
Output	: 1 HP (0.75 kW)		Temperature rise	: 80 K
Poles	: 4		Duty cycle	: Cont.(S1)
Frequency	: 60 Hz		Ambient temperature	: -20°C to +40°C
Rated voltage	: 230/460 V		Altitude	: 1000 m.a.s.l.
Rated current	: 2.94/1.47 A		Protection degree	: IP55
L. R. Amperes	: 25.3/12.6 A		Cooling method	: IC411 - TEFC
LRC	: 8.6x(Code M)		Mounting	: F-1
No load current	: 1.78/0.890 A		Rotation <sup>1</sup>	: Both (CW and CCW)
Rated speed	: 1765 rpm		Noise level <sup>2</sup>	: 52.0 dB(A)
Slip	: 1.94 %		Starting method	: Direct On Line
Rated torque	: 2.98 ft.lb		Approx. weight <sup>3</sup>	: 36.8 lb
Locked rotor torque	: 280 %			
Breakdown torque	: 300 %			
Insulation class	: F			
Service factor	: 1.15			
Moment of inertia (J)	: 0.1232 sq.ft.lb			
Design	: B			
Output	25%	50%	75%	100%
Efficiency (%)	81.0	82.5	84.0	85.5
Power Factor	0.30	0.52	0.66	0.75
	Foundation loads			
			Max. traction	: 98 lb
			Max. compression	: 135 lb
		<u>Drive end</u>	<u>Non drive end</u>	
Bearing type	:	6204 ZZ	6202 ZZ	
Sealing	:	V'Ring	Without Bearing Seal	
Lubrication interval	:	-	-	
Lubricant amount	:	-	-	
Lubricant type	:	Mobil Polyrex EM		
Notes				
USABLE @208V 3.25A SF 1.00 SFA 3.25A				
This revision replaces and cancel the previous one, which must be eliminated. (1) Looking the motor from the shaft end. (2) Measured at 1m and with tolerance of +3dB(A). (3) Approximate weight subject to changes after manufacturing process. (4) At 100% of full load.			These are average values based on tests with sinusoidal power supply, subject to the tolerances stipulated in NEMA MG-1.	
Rev.	Changes Summary		Performed	Checked
Performed by			Page	Revision
Checked by				
Date	22/08/2022		1 / 5	

# TORQUE AND CURRENT VS SPEED CURVE

## Three Phase Induction Motor - Squirrel Cage



Customer : Automation Direct

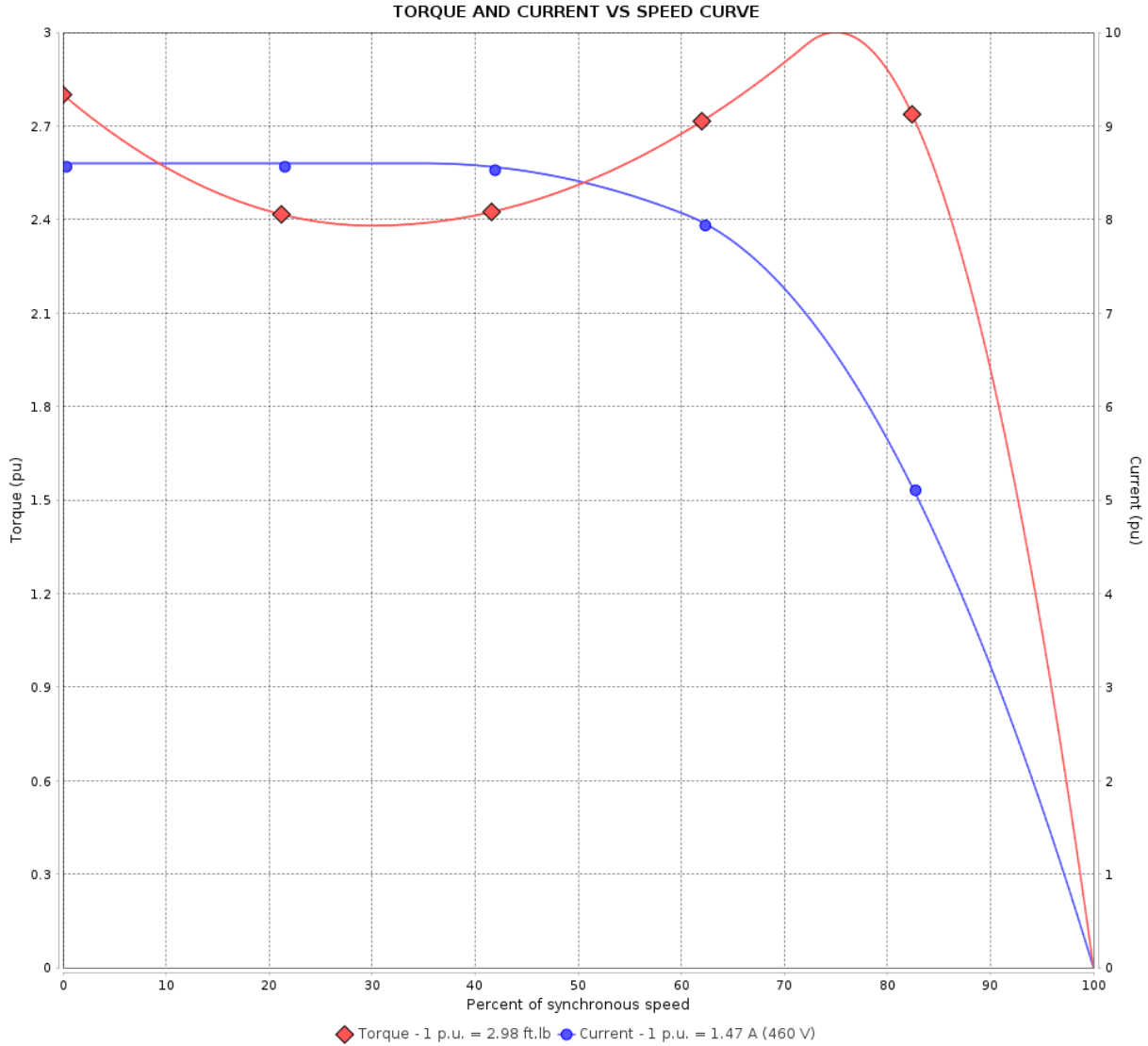
Product line : Premium Efficiency Three-Phase

Product code :

14797787

Catalog # :

00118ET3E56-S



Performance : 230/460 V 60 Hz 4P

Rated current : 2.94/1.47 A  
 LRC : 8.6  
 Rated torque : 2.98 ft.lb  
 Locked rotor torque : 280 %  
 Breakdown torque : 300 %  
 Rated speed : 1765 rpm

Moment of inertia (J) : 0.1232 sq.ft.lb  
 Duty cycle : Cont.(S1)  
 Insulation class : F  
 Service factor :  
 Temperature rise : 80 K  
 Design : B

Locked rotor time : 34s (cold) 19s (hot)

Rev.	Changes Summary	Performed	Checked	Date
Performed by			Page	Revision
Checked by				
Date				

# LOAD PERFORMANCE CURVE

## Three Phase Induction Motor - Squirrel Cage



Customer : Automation Direct

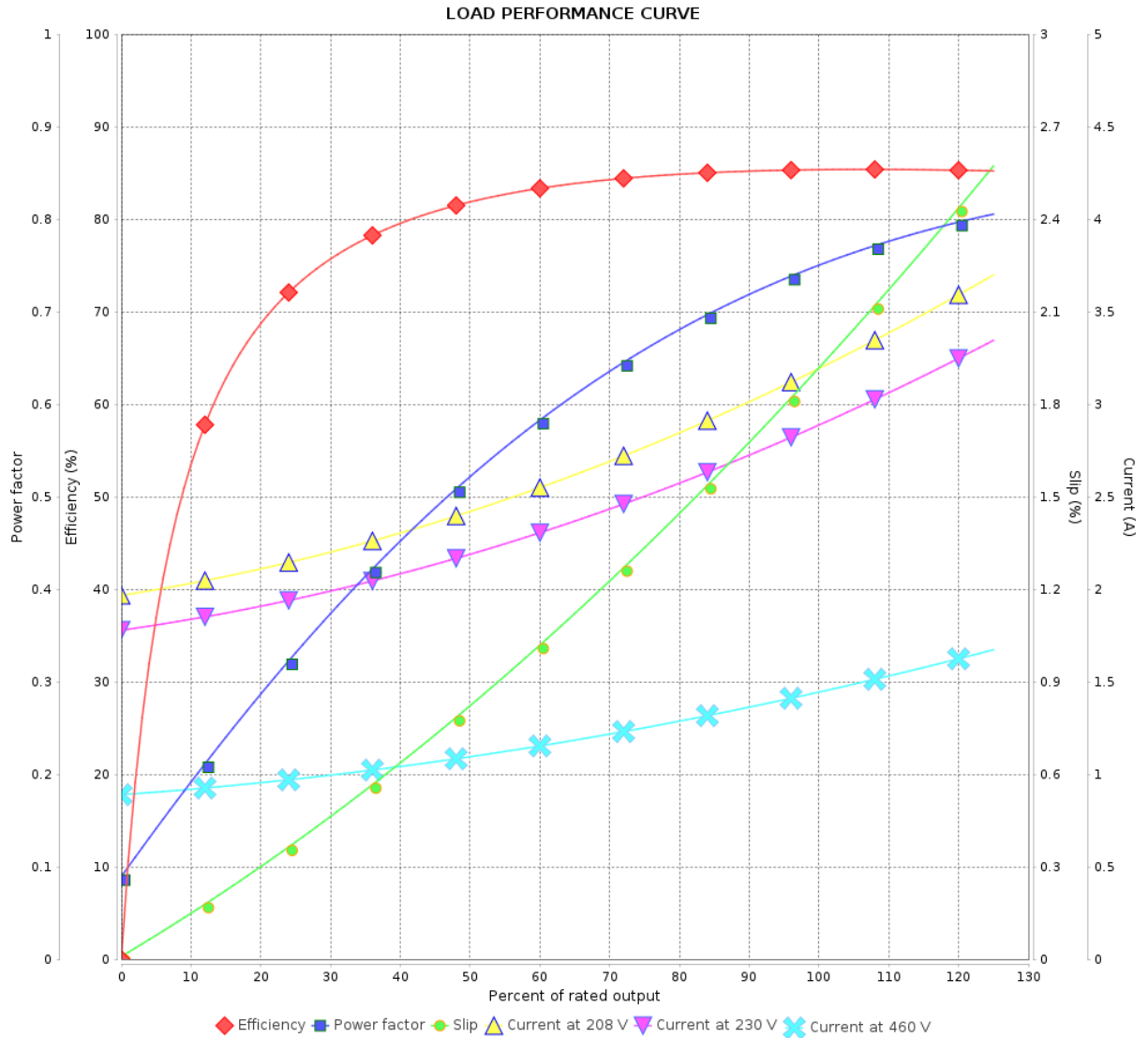
Product line : Premium Efficiency Three-Phase

Product code :

14797787

Catalog # :

00118ET3E56-S



Performance : 230/460 V 60 Hz 4P

Rated current : 2.94/1.47 A  
 LRC : 8.6  
 Rated torque : 2.98 ft.lb  
 Locked rotor torque : 280 %  
 Breakdown torque : 300 %  
 Rated speed : 1765 rpm

Moment of inertia (J) : 0.1232 sq.ft.lb  
 Duty cycle : Cont.(S1)  
 Insulation class : F  
 Service factor :  
 Temperature rise : 80 K  
 Design : B

Rev.	Changes Summary	Performed	Checked	Date
Performed by			Page	Revision
Checked by				
Date				

# THERMAL LIMIT CURVE

## Three Phase Induction Motor - Squirrel Cage



Customer : Automation Direct

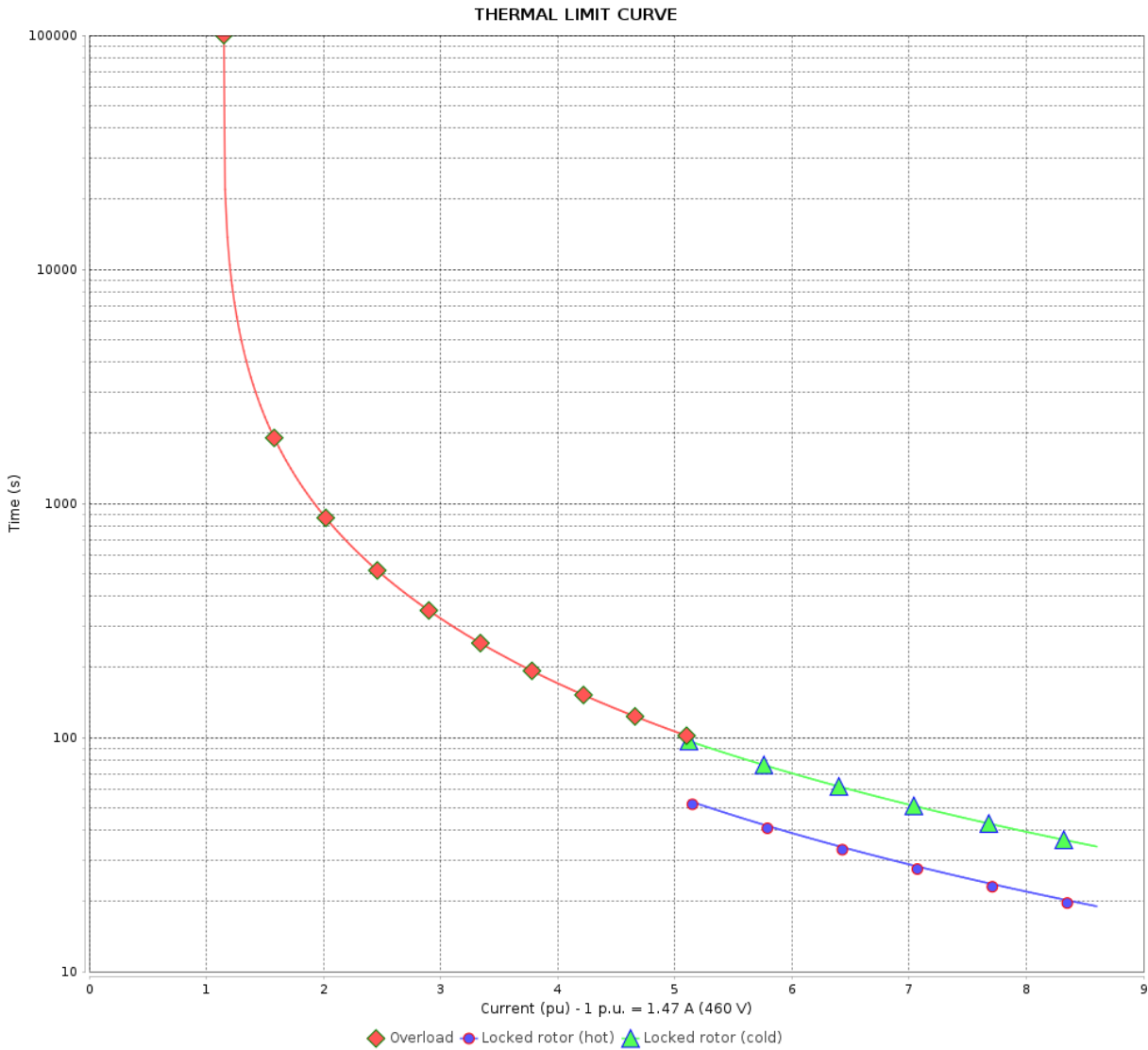
Product line : Premium Efficiency Three-Phase

Product code :

14797787

Catalog # :

00118ET3E56-S



Performance : 230/460 V 60 Hz 4P

Rated current : 2.94/1.47 A  
 LRC : 8.6  
 Rated torque : 2.98 ft.lb  
 Locked rotor torque : 280 %  
 Breakdown torque : 300 %  
 Rated speed : 1765 rpm

Moment of inertia (J) : 0.1232 sq.ft.lb  
 Duty cycle : Cont.(S1)  
 Insulation class : F  
 Service factor :  
 Temperature rise : 80 K  
 Design : B

Heating constant

Cooling constant

Rev.	Changes Summary	Performed	Checked	Date
Performed by			Page	Revision
Checked by				
Date				

# VFD OPERATION CURVE

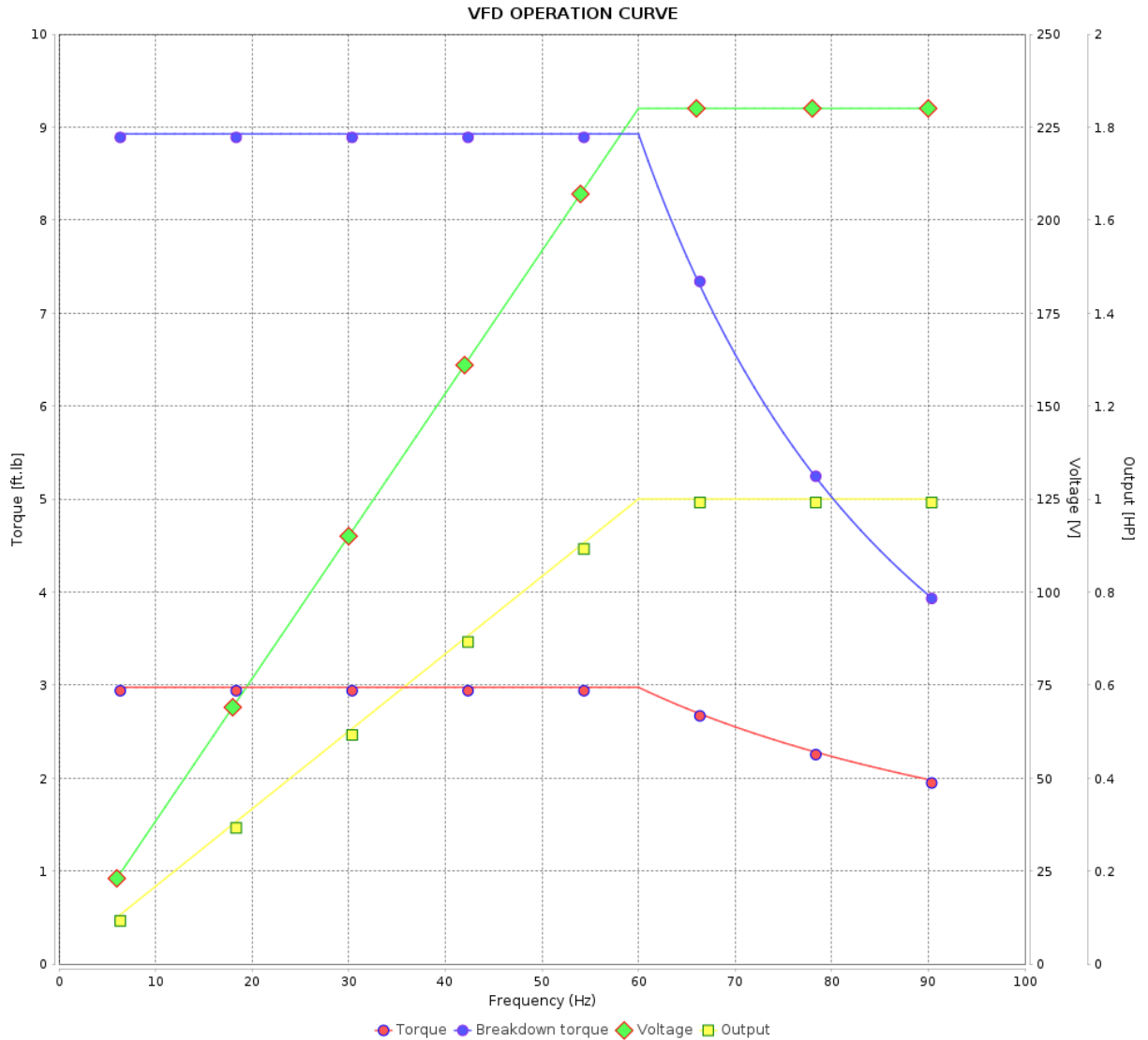
## Three Phase Induction Motor - Squirrel Cage



Customer : Automation Direct

Product line : Premium Efficiency Three-Phase

Product code : 14797787  
Catalog # : 00118ET3E56-S



Performance : 230/460 V 60 Hz 4P

Rated current : 2.94/1.47 A  
LRC : 8.6  
Rated torque : 2.98 ft.lb  
Locked rotor torque : 280 %  
Breakdown torque : 300 %  
Rated speed : 1765 rpm

Moment of inertia (J) : 0.1232 sq.ft.lb  
Duty cycle : Cont.(S1)  
Insulation class : F  
Service factor :  
Temperature rise : 80 K  
Design : B

Rev.	Changes Summary	Performed	Checked	Date
Performed by			Page	Revision
Checked by				
Date				

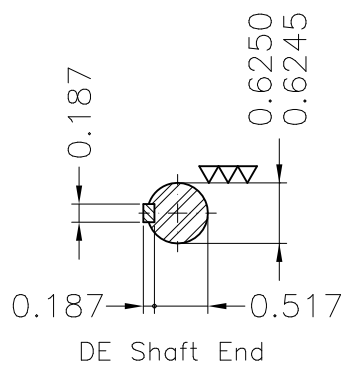
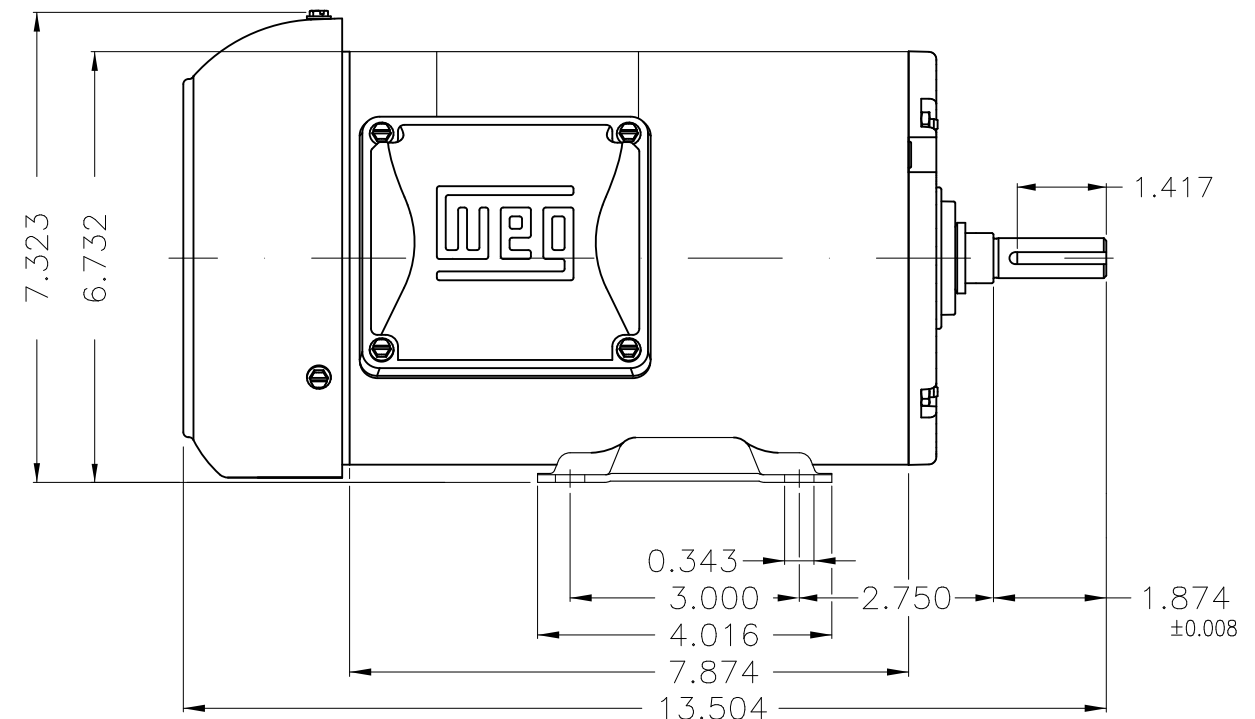
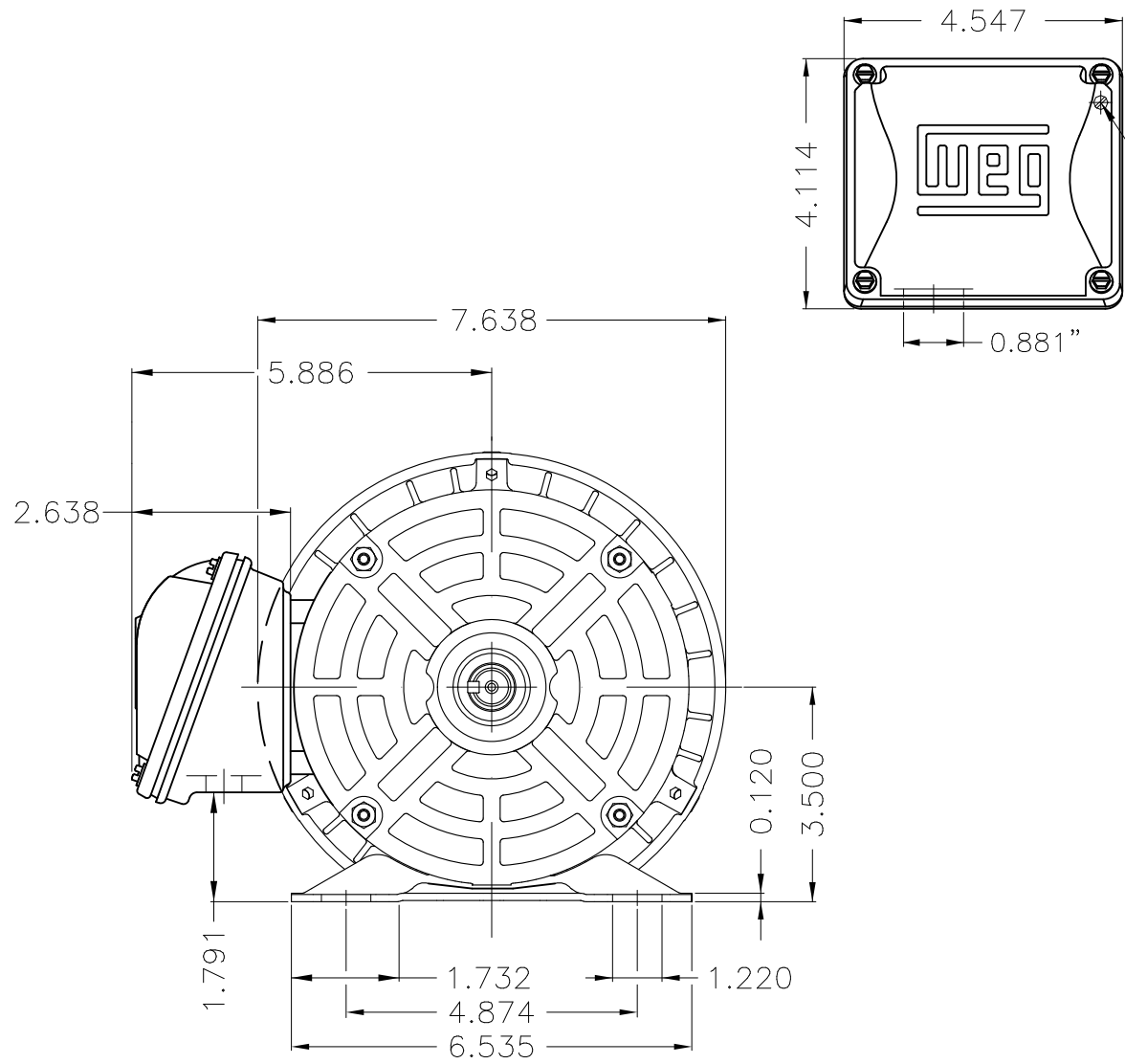
A

B

C

D

E



Fan cover - steel plate									
Without coating									
Mounting B3D									
ECM	LOC	SUMMARY OF MODIFICATIONS			EXECUTED	CHECKED	RELEASED	DATE	VER
EXECUTED	HYBRISUSER	THREE PH. MOTOR ROLLED STEEL PREM. EFF.			PREVIEW		WDD		
CHECKED		FRAME 56 IP55 TEFC			WDD		WEG		
RELEASED					SHEET		1 / 1		
REL DT.		WMO	Jaragua do Sul	Product Engineering					

1 HP 04 Poles 60 Hz

**NEMA  
Premium**3PT9  
UL US LISTED  
FOR SAFE AREA

Energy Verified

MADE IN BRAZIL

**MAT: 14797787 CC029A****W01.TE0IC0X0X****MODEL 00118ET3E56-S****16AUG2022 B/N:****For 60Hz: Class I, Zone 2, IIC  
Class I, Div.2, Gr. A,B,C,D - T3  
Div 2 Inverter Duty (SF1.00)****CT 2:1/VT 1000:1**

<b>PH 3</b>	<b>Hz 60</b>	<b>HP 1.0</b>
<b>FR 56</b>		<b>KW 0.75</b>
<b>DUTY CONT.</b>		<b>V 230/460</b>
<b>ALT 1000 m.a.s.l.</b>		<b>A 2.94/1.47</b>
<b>INS CL F AT 80K</b>	<b>IP55</b>	<b>SFA 3.38/1.69</b>
<b>AMB 40°C</b>	<b>DES B</b>	<b>SF 1.15</b>
<b>ENCL TEFC</b>	<b>CODE M</b>	<b>PF 0.75</b>
<b>USABLE @ 208V 3.25A</b>		<b>RPM 1765</b>
<b>SF1.00</b>		<b>NEMA NOM. EFF 85.5%</b>

<b>ALTERNATE RATING: 1.0HP 50Hz 190-220/380-415V SF1.00</b>
<b>3.40-3.06/1.70-1.62A 1450RPM EFF 82.9% (IE3) IEC 60034-1</b>

For safe area-inverter duty motor For 60Hz use on VPWM 1000:1 VT, 5:1 CT

<b>DE 6204-ZZ</b>	<b>ODE 6202-ZZ</b>	<b>MOBIL POLYREX EM</b>
-------------------	--------------------	-------------------------



T1-BLU T2-WHT  
T3-ORG T4-YEL  
T5-BLK T6-GRY  
T7-PNK T8-RED  
T9-BRK RED

**INTERCHANGE ANY TWO LINE WIRES TO REVERSE THE ROTATION**

**WARNING:** Motor must be grounded in accordance with local and national electrical codes to prevent serious electrical shocks. Disconnect power source before servicing unit.



**AVERTISSEMENT:** Le moteur doit être mis à la terre conformément aux codes électriques locaux et nationaux afin d'éviter tout choc électrique grave. Déconnectez l'alimentation avant l'entretien de la machine.

