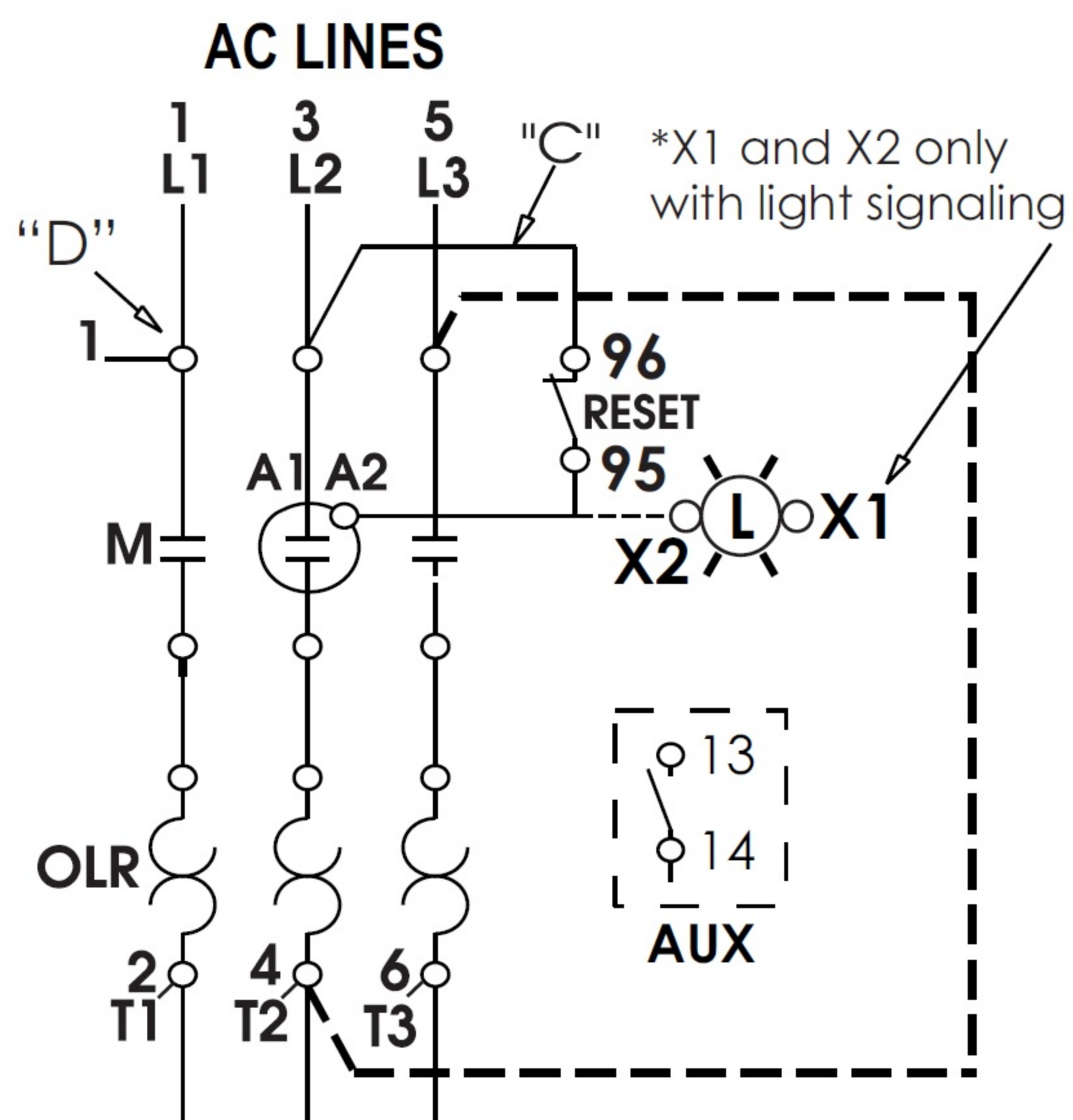
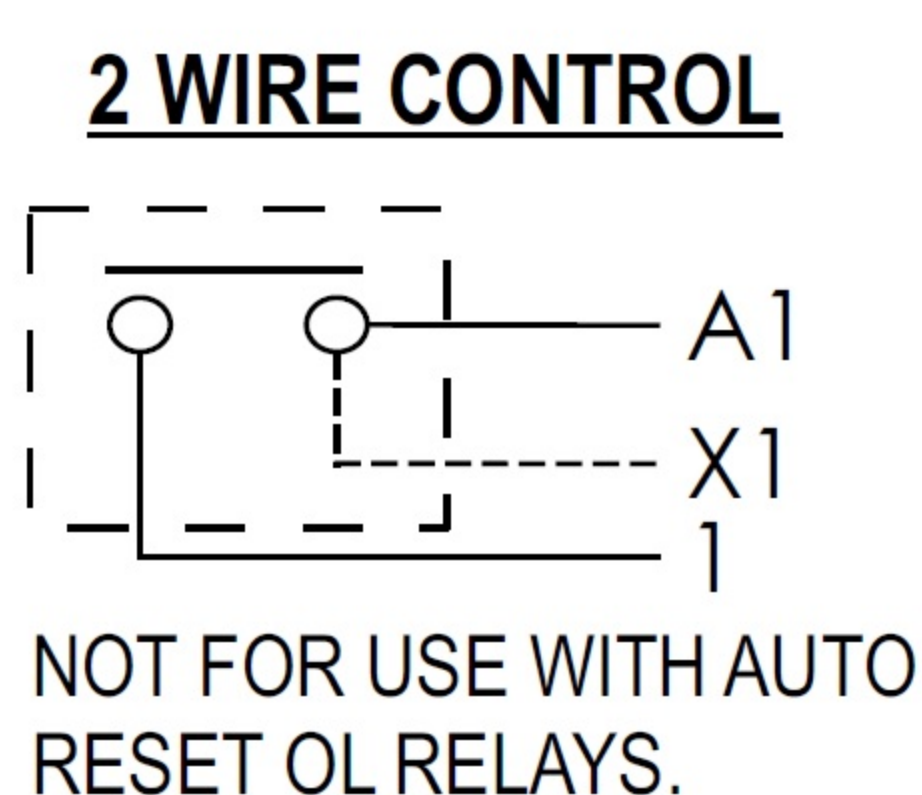


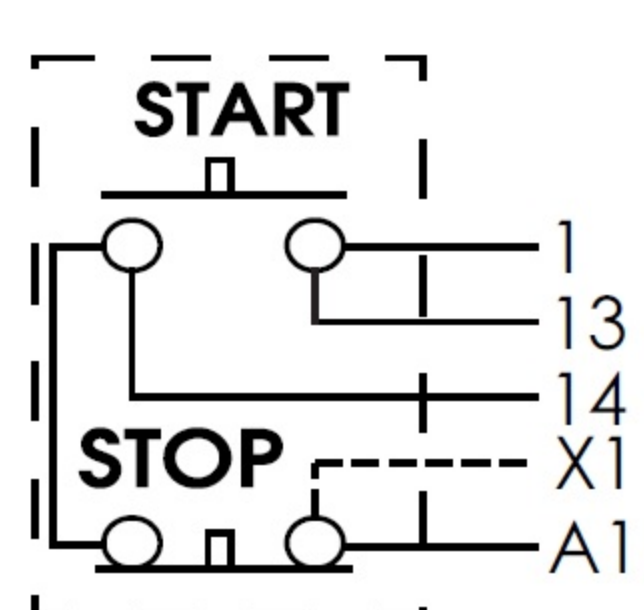
CONNECTIONS FOR NON-REVERSING STARTER



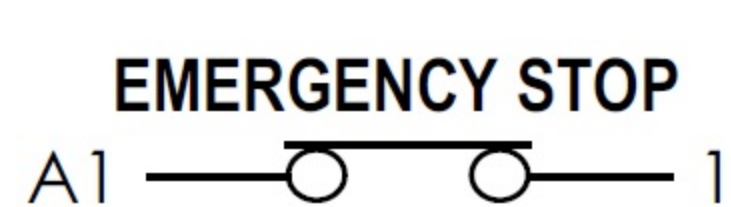
2 WIRE CONTROL



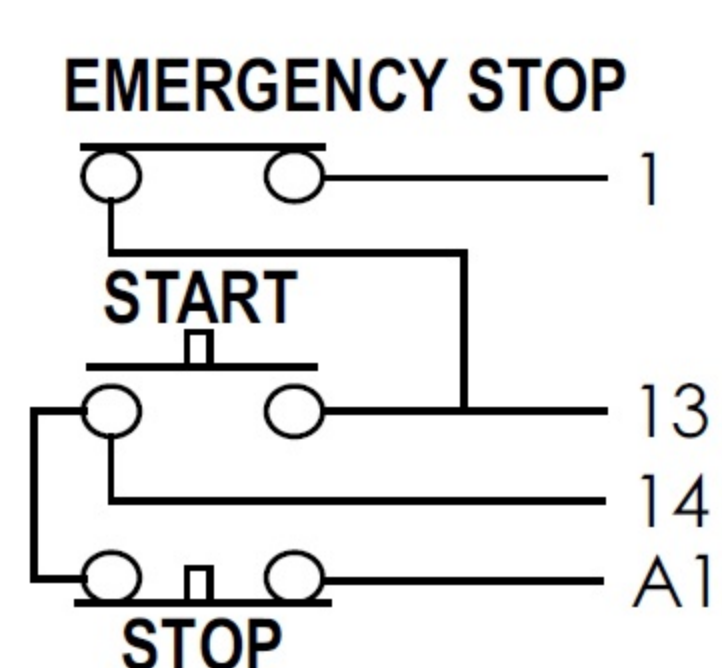
3 WIRE CONTROL



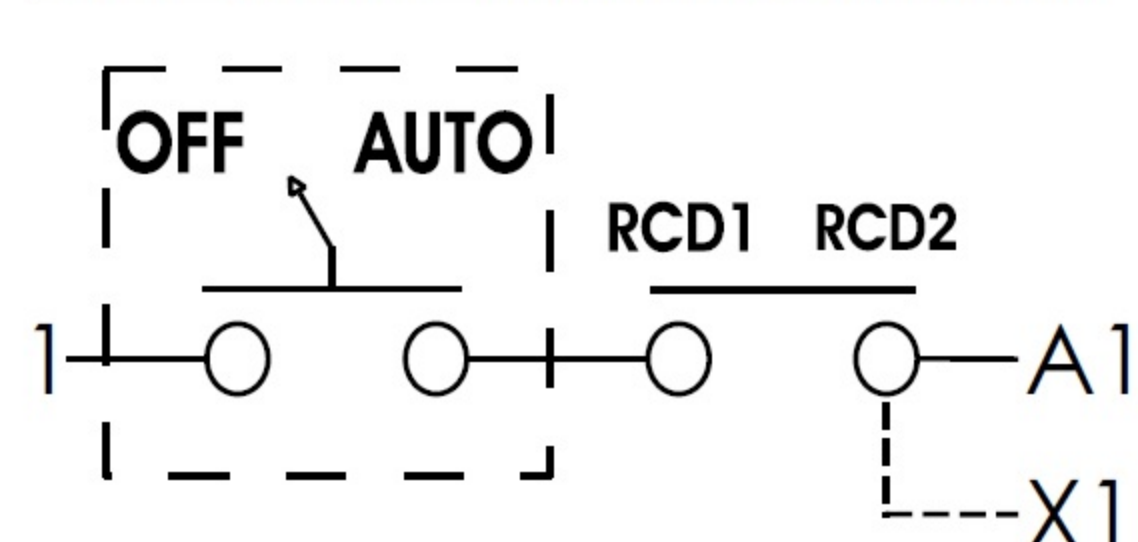
2 WIRE CONTROL



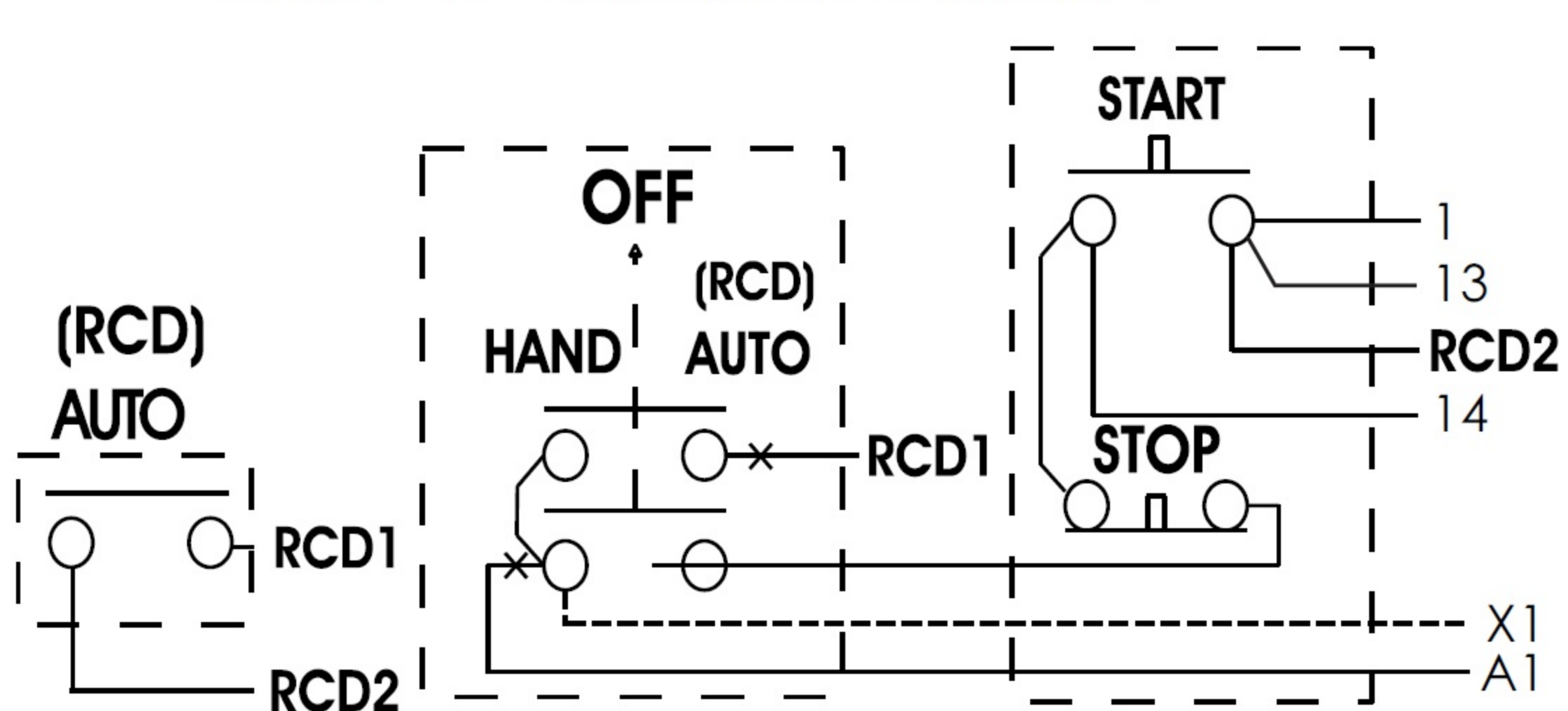
3 WIRE CONTROL



OFF-AUTO WIRE CONTROL



HAND-OFF-AUTO WIRE CONTROL



CWM 9...18	14-10 AWG	15 lb-in	LINE TERMINALS
CWM 25...32	14-8 AWG	16 lb-in	
CWB9...18	18-10 AWG	15 lb-in	LOAD TERMINALS
CWB25...38	14-8 AWG	22 lb-in	
CWM40	14-8 AWG	40 lb-in	Use 75°C Copper Conductors only
CWM50...80	14-1/0 AWG	40 lb-in	
CWM95...105	10-1/0 AWG	60 lb-in	
RW17D...27D	16-8 AWG	20 lb-in	
RW67D	10-3 AWG	35 lb-in	
RW117D	6-1/0 AWG	53 lb-in	

MECHANICAL ASSEMBLY - CONTACT BLOCKS

NOTE: POSITION 1 OF THE FLANGE OR BBA05 CORRESPONDS TO POSITION **START** OR **AUTO** OF EACH OPERATOR. POSITION 2 OF THE FLANGE OR BBA05 CORRESPONDS TO POSITION **STOP** OR **HAND** OF EACH OPERATOR.

OVERLOAD RELAY INSTRUCTIONS

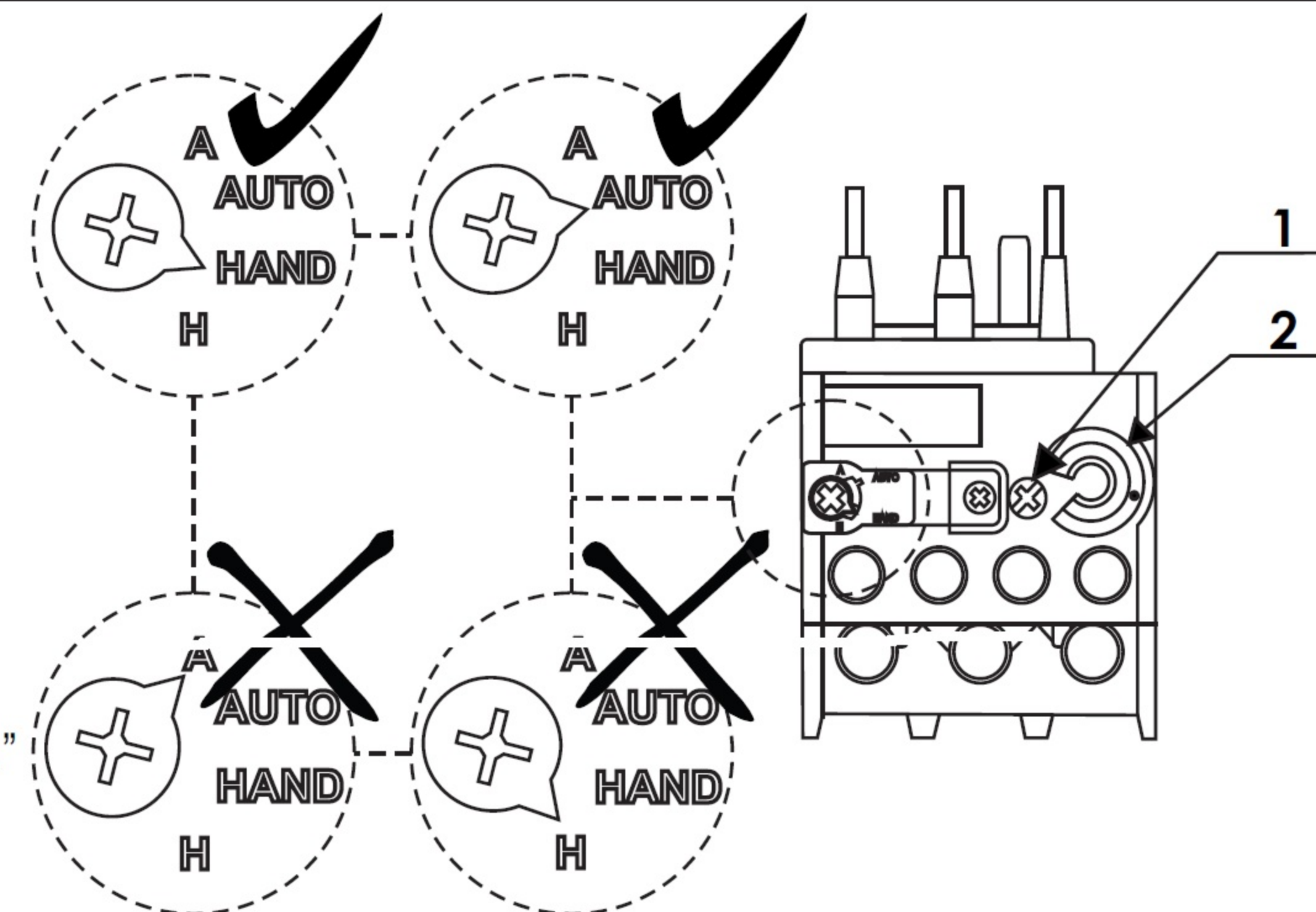
WARNING - To provide continuous protection against fire or shock hazard, the whole overload relay must be replaced in case of burnout of one or more heater elements.

Setting the Full Load Current (FLA).
Set the overload relay to full load current by adjusting dial (1) so that the set marking (red point) aligns with the desired current (2).

NOTE: Automatic reset is not intended for two-wire control devices.

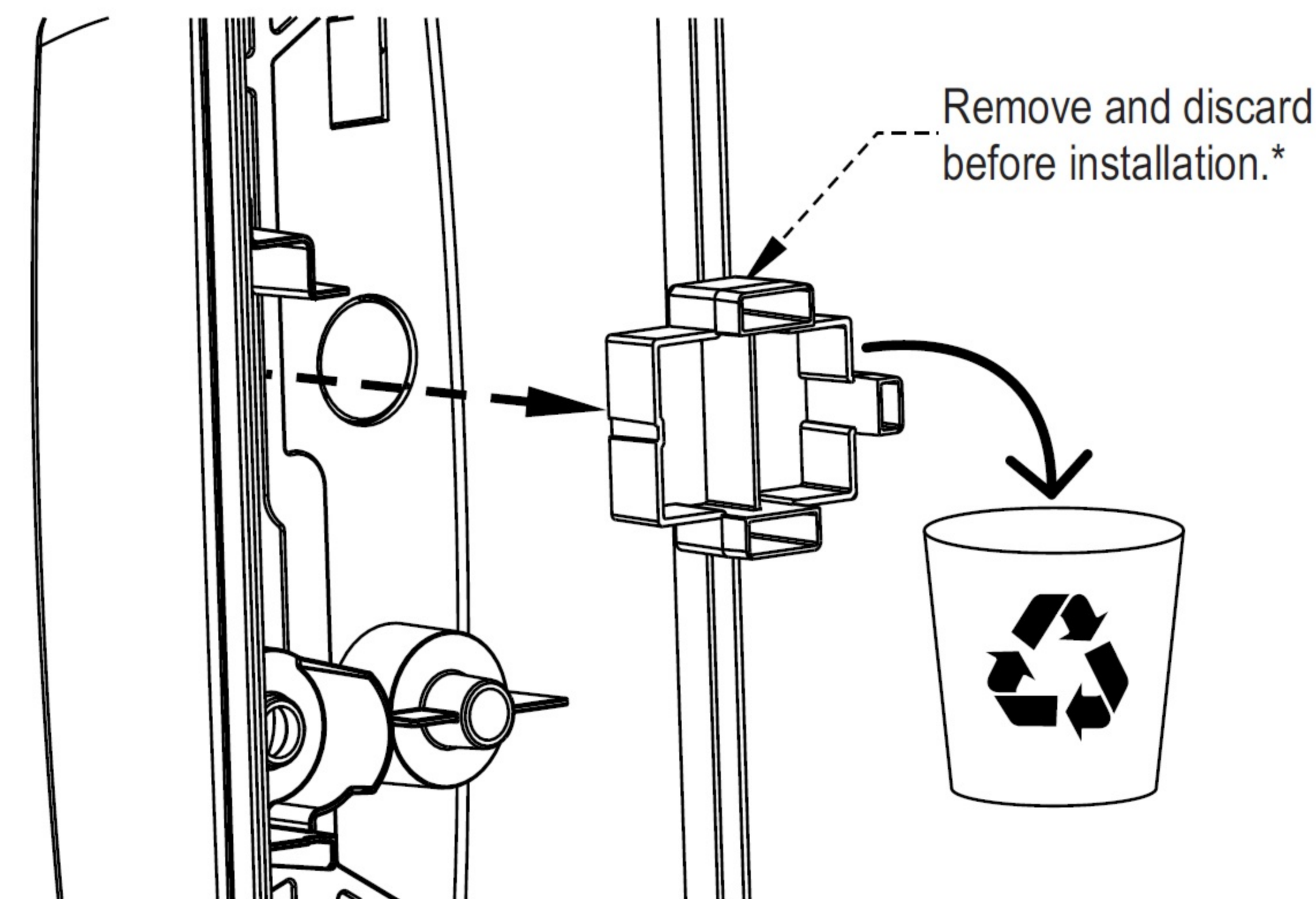
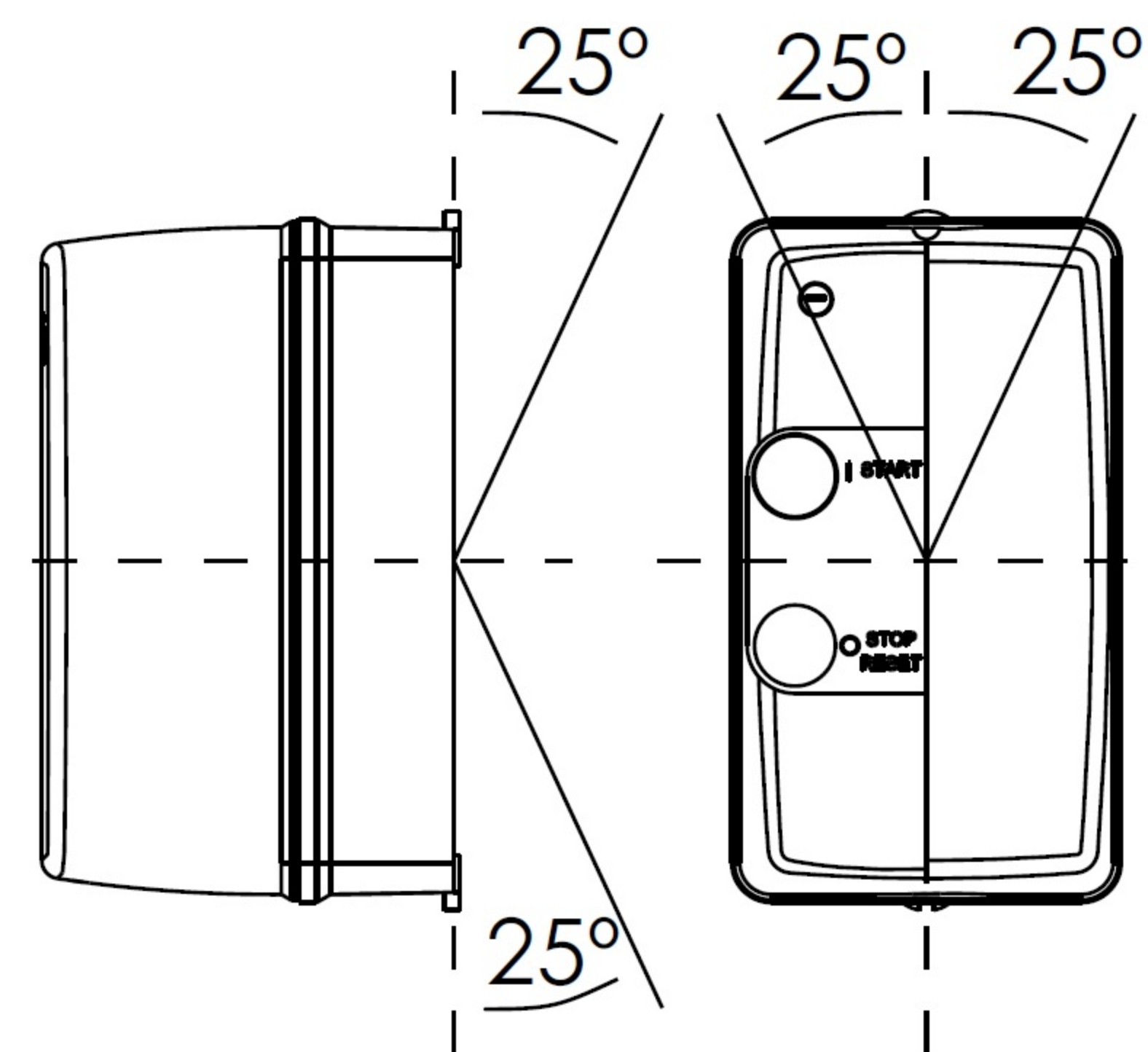
"Not suitable for OLRs with interchangeable heater elements."

CAUTION: Bonding between conduits must be provided."



Note: The conduit hubs are to be connected to the conduit before being connected to the enclosure.

MOUNTING POSITIONS



*For PESW-B9, PESW-B12 and PESW-B18 only