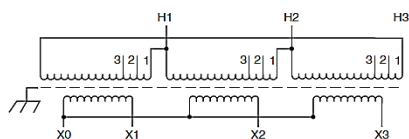
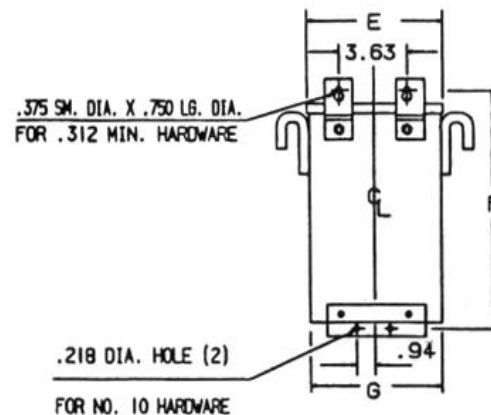
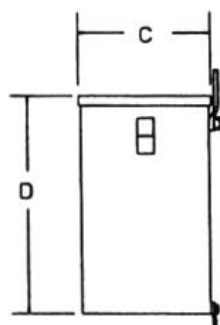
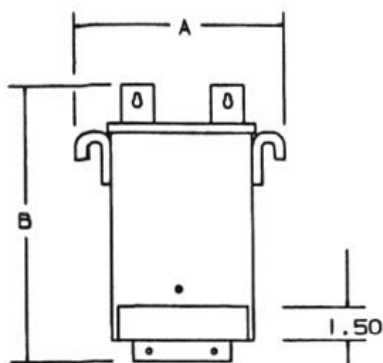


REVISIONS



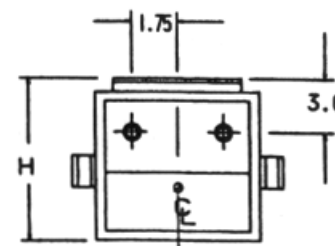
Primary Volts	Connect Primary Lines To	Inter-Connect	Connect Secondary Lines To
600	H1, H2, H3	1	
570	H1, H2, H3	2	
540	H1, H2, H3	3	

Secondary Volts

480		X1, X2, X3
277 1 phase		X1 to X0 X2 to X0 X3 to X0

NOTES:

- I. KNOCKOUTS:  
1.69 DIA. FOR 1.25 CONDUIT  
1.13 DIA. FOR .75 CONDUIT



BOTTOM



KVA	CATALOG NUMBER	VOLTAGE		MARKINGS	WEIGHT	PHASE	FREQUENCY
		HIGH	LOW				
9.0	<b>T2A795181S</b>	600Δ	480Y/277		180 Lbs	3φ	60Hz
Temp Rise:	115°C	<b>TYPICAL PERFORMANCE DATA</b>					
Insulation:	180°C	Regulation @ 100% PF		Windings:	AL		
Standards:	UL/CSA	<b>Encapsulated</b>					
	<b>A</b>	<b>B</b>	<b>C</b>	<b>D</b>	<b>E</b>	<b>F</b>	<b>G</b>
	17.77	15.28	11.17	12.71	15.27	14.03	15.15
							<b>H</b>
							11.52

DATE: 3-Feb-16

TYPE NO: