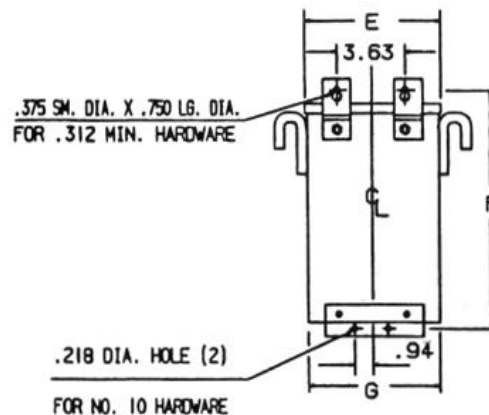
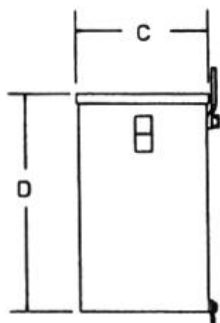
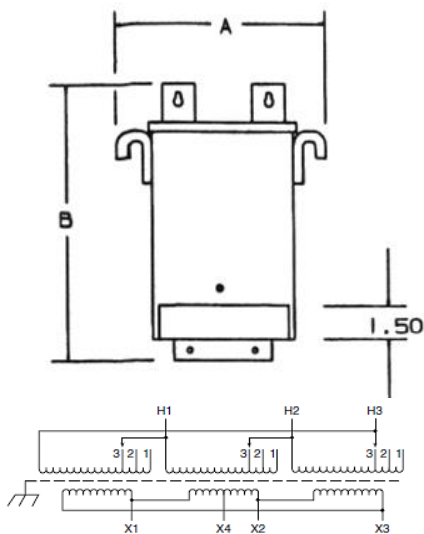
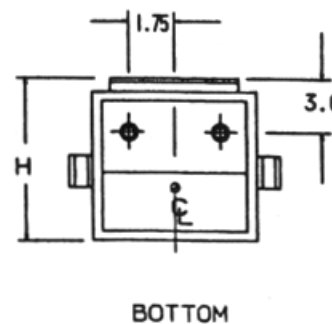


REVISIONS



NOTES:

- I. KNOCKOUTS:  
1.69 DIA. FOR 1.25 CONDUIT  
1.13 DIA. FOR .75 CONDUIT



Primary Volts	Connect Primary Lines To	Inter-Connect	Connect Secondary Lines To
480	H1, H2, H3	1	
456	H1, H2, H3	2	
432	H1, H2, H3	3	
<b>Secondary Volts</b>			
240			X1, X2, X3
120			X1, X4 or X2, X4

KVA	CATALOG NUMBER	VOLTAGE		MARKINGS	WEIGHT	PHASE	FREQUENCY
		HIGH	LOW				
9.0	<b>T2A533401S</b>	480Δ	240Δ/120		180 Lbs	3φ	60Hz
Temp Rise:		115°C	<b>TYPICAL PERFORMANCE DATA</b>				
Insulation:		180°C					
Standards:		UL/CSA	Regulation @ 100% PF	Windings:	AL		
<b>Encapsulated</b>							
<b>A</b>	<b>B</b>	<b>C</b>	<b>D</b>	<b>E</b>	<b>F</b>	<b>G</b>	<b>H</b>
17.77	15.28	11.17	12.71	15.27	14.03	15.15	11.52



DATE: 3-Feb-16

TYPE NO: