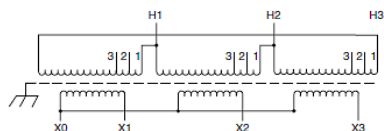
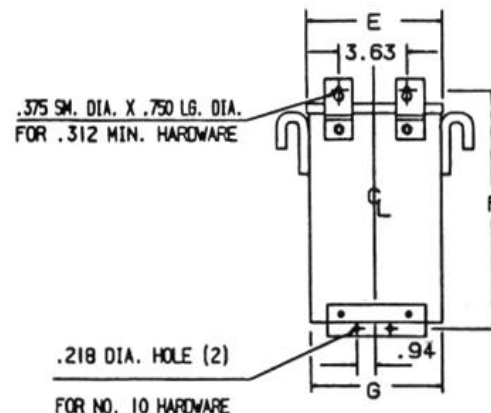
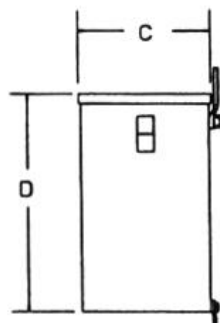
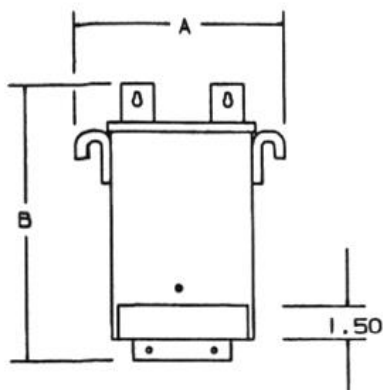
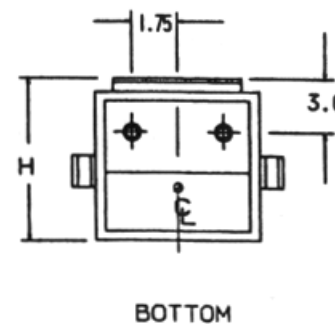


REVISIONS



NOTES:

- I. KNOCKOUTS:  
1.69 DIA. FOR 1.25 CONDUIT  
1.13 DIA. FOR .75 CONDUIT



Primary Volts	Connect Primary Lines To	Inter-Connect	Connect Secondary Lines To
480	H1, H2, H3	1	
456	H1, H2, H3	2	
432	H1, H2, H3	3	
<b>Secondary Volts</b>			
208			X1, X2, X3
120 1 phase			X1 to X0 X2 to X0 X3 to X0

BOTTOM



KVA	CATALOG NUMBER	VOLTAGE		MARKINGS	WEIGHT	PHASE	FREQUENCY	
		HIGH	LOW					
9.0	<b>T2A533101S</b>	480Δ	208Y/120		177 Lbs	3φ	60Hz	
Temp Rise:		115°C	<b>TYPICAL PERFORMANCE DATA</b>					
Insulation:		180°C					Regulation @ 100% PF	
Standards:		UL/CSA	<b>Encapsulated</b>					
<b>A</b>		<b>B</b>	<b>C</b>	<b>D</b>	<b>E</b>	<b>F</b>	<b>G</b>	<b>H</b>
17.77		15.28	11.17	12.71	15.27	14.03	15.15	11.52

DATE: 3-Feb-16

TYPE NO: