

TOSVERT VF-AS3

Door mounting kit Instruction Manual

SBP010Z

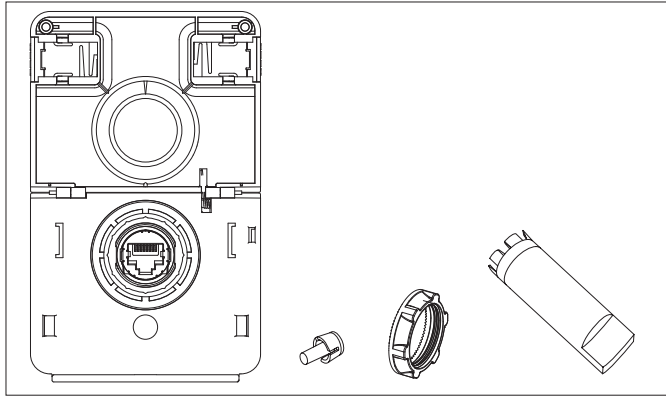
TOSHIBA INDUSTRIAL PRODUCTS AND SYSTEMS CORPORATION

NOTICE

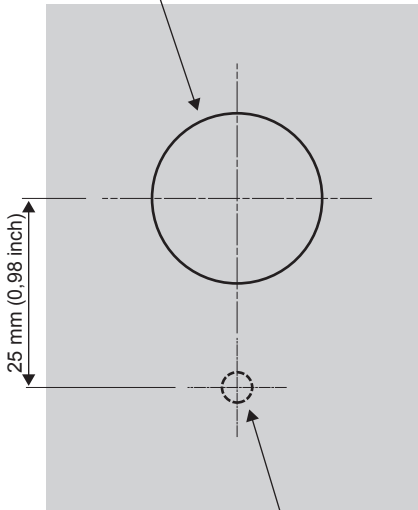
1. Make sure that this instruction manual is delivered to the end user of Door mounting kit.
2. Read this manual before attaching the Door mounting kit.
Keep it in a safe place for reference.
3. All information contained in this manual will be changed without notice.



* NHA93628REV04*

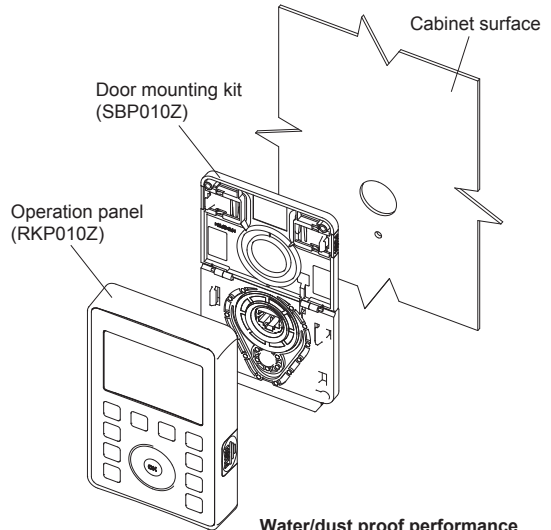


Ø22.5 mm
(Ø0,87 inch)



scale 1:1

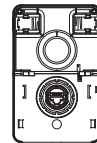
Ø4 mm
(Ø0,16 inch)



Water/dust proof performance



Closed:
IP65
UL type12



Open:
No protection

*Close the door to improve the performance



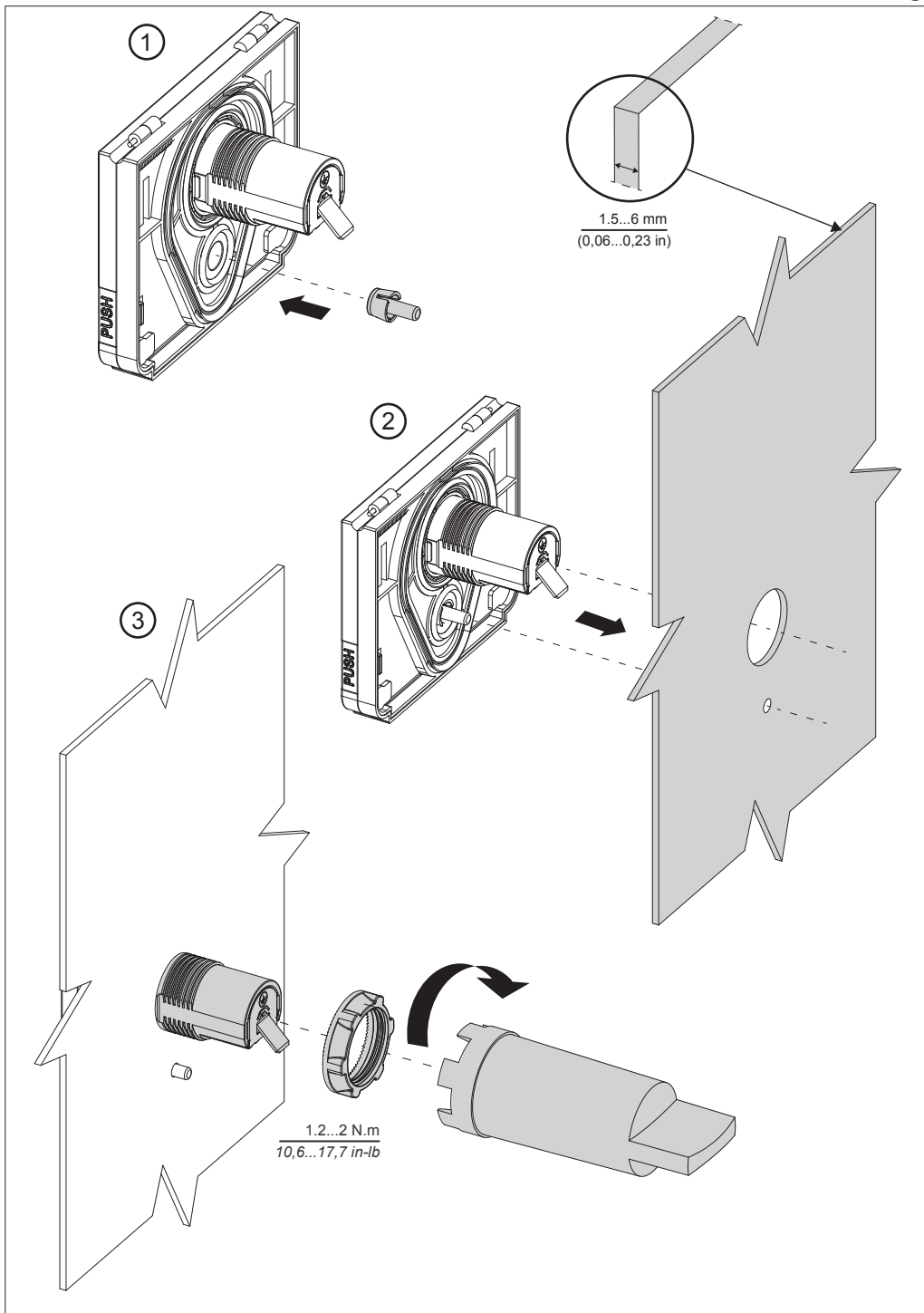
With operation panel:
IP65
UL type12

⚠ CAUTION

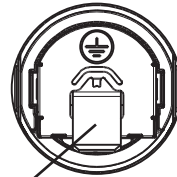
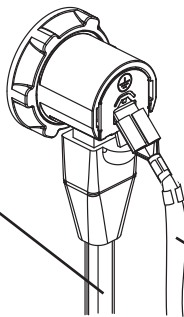
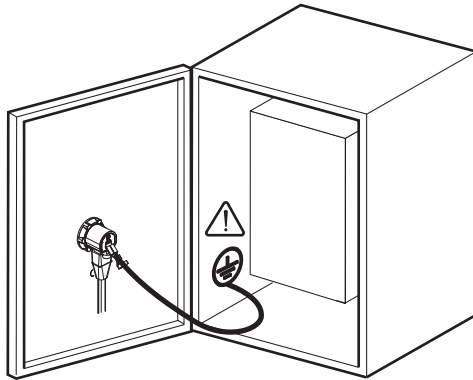


Prohibited

- Do not detach the operation panel from the inverter when the power is ON. This will result in failure. Please detach the operation panel after turning the power off.



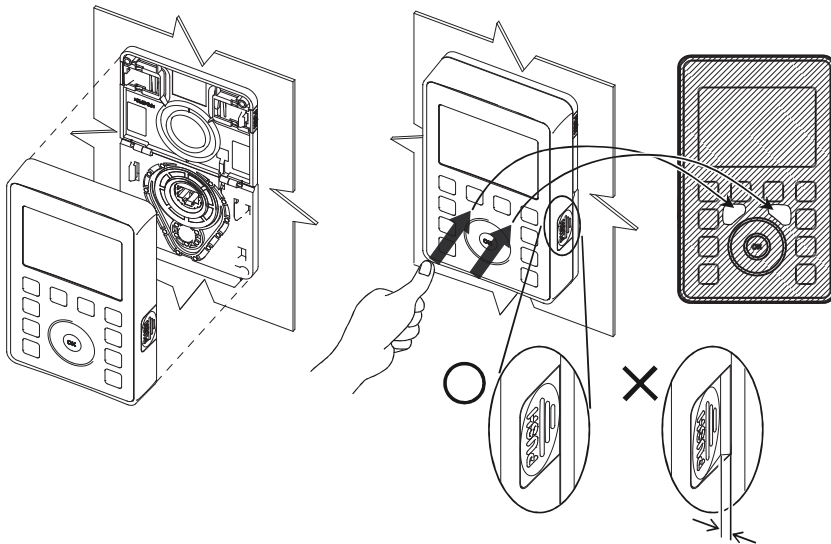
④



Panel cable (option)
 Type-form: CAB0071(1m)
 CAB0073(3m)
 CAB0075(5m)
 CAB00710(10m)

FAST-ON-TAB
 width : 6.35 mm (0.25 in)
 thickness : 0.8mm (0.03 in)

The recommended wire size
 is 2.5 mm² (AWG13) or more.



TOSHIBA INDUSTRIAL PRODUCTS AND SYSTEMS CORPORATION

580, Horikawa-cho, Saiwai-ku, Kawasaki, 212-0013, Japan