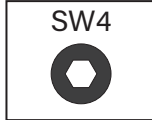
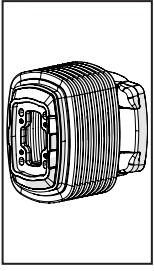
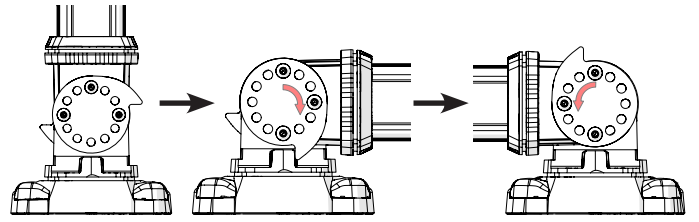


# TK060.705 Wall Mounted Module



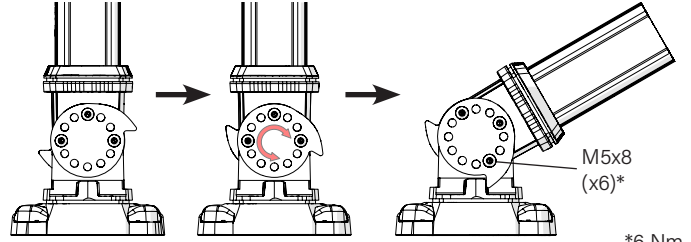
The product can rotate to  $\pm 90^\circ$  angles as follows when first out of the box  
Ürün kutudan ilk çıktığında aşağıdaki gibi  $\pm 90^\circ$  açılara dönebilir

1



Angle can be set with M8x12 bolts (30° between two holes)  
M8x12 civatalar ile açı ayarı yapılabilir (iki delik arası 30°)

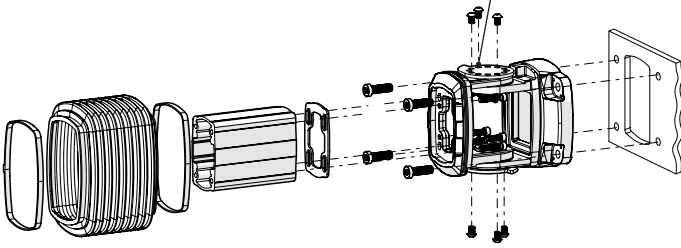
2



\*6 Nm

## Mounting View Montaj Görünümü

This part will be positioned as in the figure  
Bu kısım şekildeki gibi konulacaktır

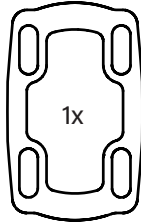


## Box Contents Kutu İçeriği

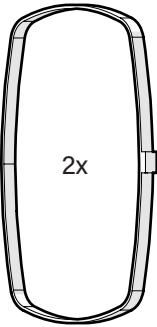
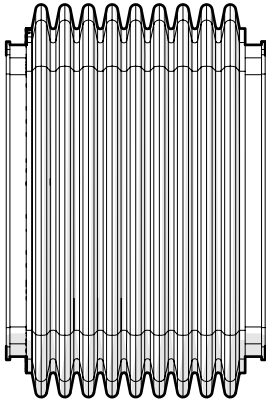
4x M6x30

2x M6x20

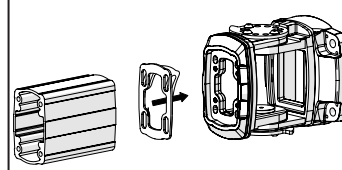
4x J6.4 (M6)



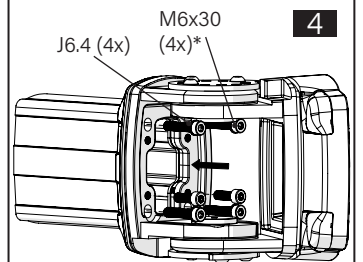
1x



3

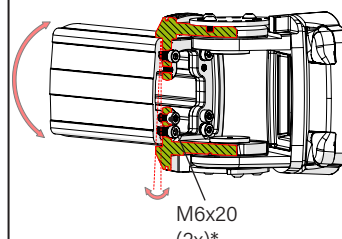


4



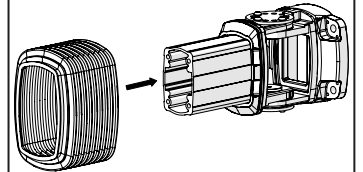
\*20 Nm

5

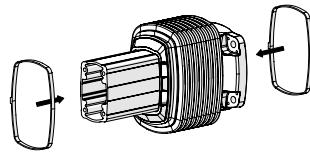


\*6 Nm

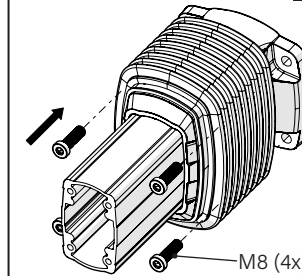
6



7

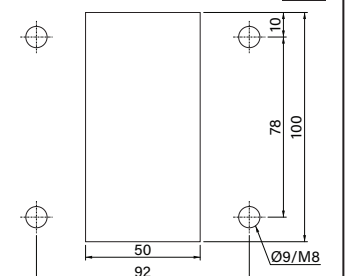


8



9

Mounting dimensions  
Montaj ölçüleri



Scan for the installation manual  
Kurulum kılavuzu için tarayın

\*M8 bolts in the image number 8 are not included in the box contents.  
\*8 numaralı görselde bulunan M8 civatalar kutu içeriğine dahil değildir.



ENCL.ACC.  
E510113

<https://teknokol.com>

+90 224 443 23 18

[teknokol@teknokol.com](mailto:teknokol@teknokol.com)

Kayapa, Karanfil Cad Kayapa Sanayi Bölgesi  
No:6, 16315 Nilüfer/Bursa

**TEKNOKOL**  
Support Arm and Control Panel Systems