

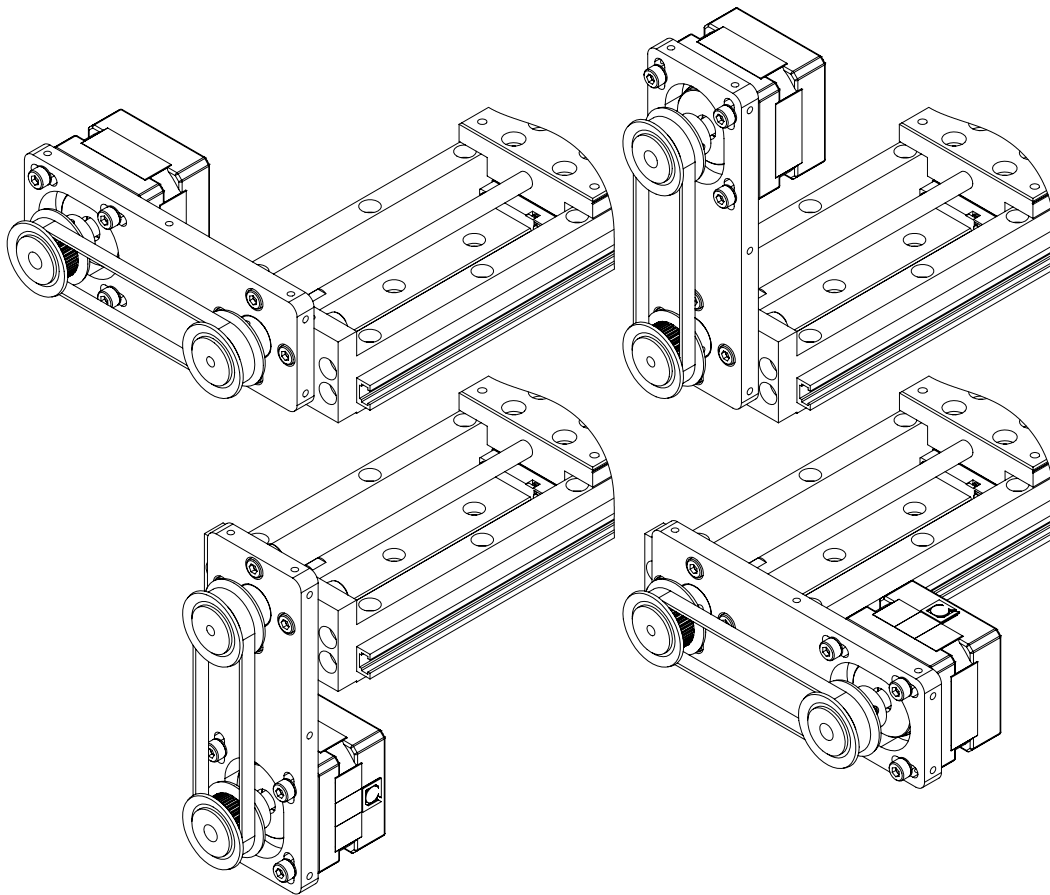


LAHP-N14-25WRPBKT ASSEMBLY

MOUNT COMPATIBILITY

Mount Compatibility		
Motor Frame Size	Motor Type	LAHP-25 Series
N14	Stepper	LAHP-N14-25WRPBKT

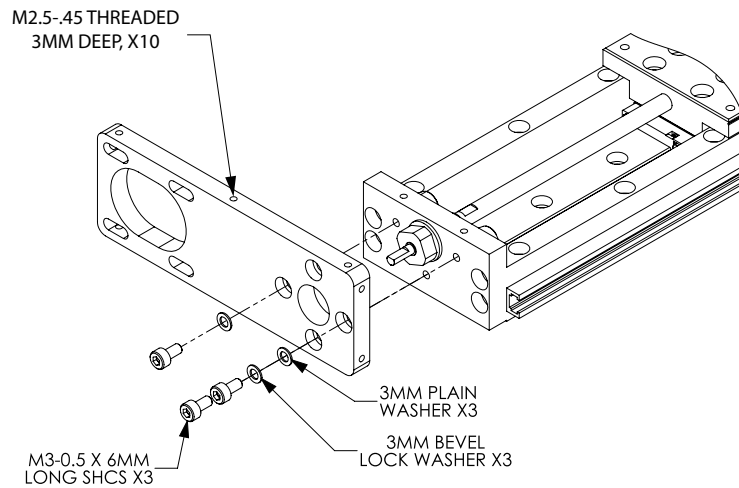
The parallel mount can be attached vertically or horizontally as shown below*. These steps only apply to LAHP-25 series actuators. Your exact model may not be shown.



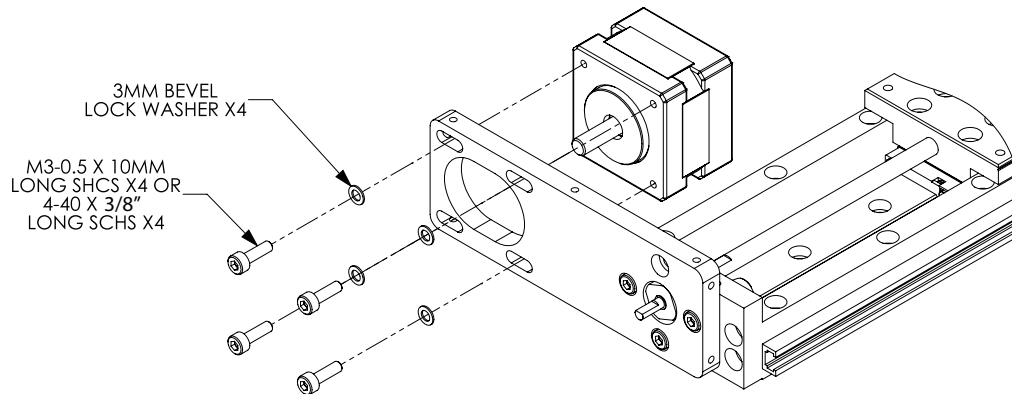
NOTE: Belt guards not available from ADC. Mounting holes are available for user designed belt guards.

ASSEMBLY INSTRUCTIONS

- 1) Secure the mount to the actuator using the three (3) supplied bolts and washers.

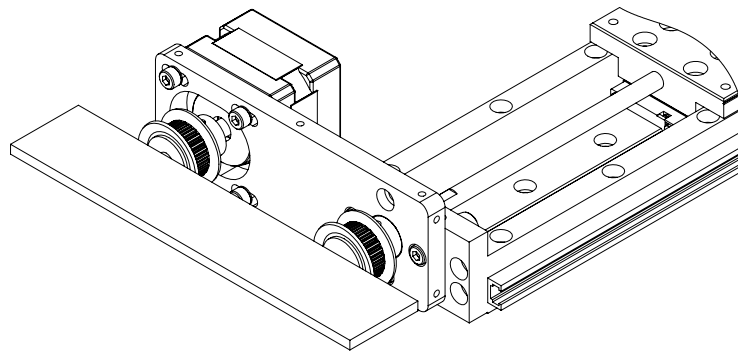
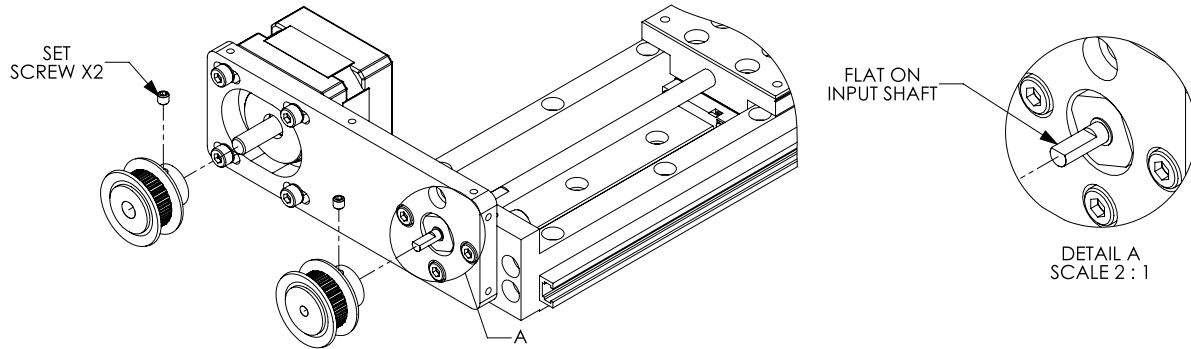


- 2) Secure the NEMA 14 stepper motor to the mount using the four (4) supplied bolts and washers.



NOTE: When mounting motor, orient so that motor cables are directed for best cable management in final overall installation.

- 3) Slide the two (2) pulleys on the motor and actuator shafts.
- 4) Using a straight edge, ensure that the pulleys are flush. For each pulley, align 1 set screw with flat on input shaft and tighten. Then, tighten 2nd set screw.



- 5) Attach the belt to the pulleys. If needed, loosen the bolts on the motor, adjust the motor position to change the tension on the belt, and re-tighten the bolts.

