

LAHP-202-33MTRBKT ASSEMBLY



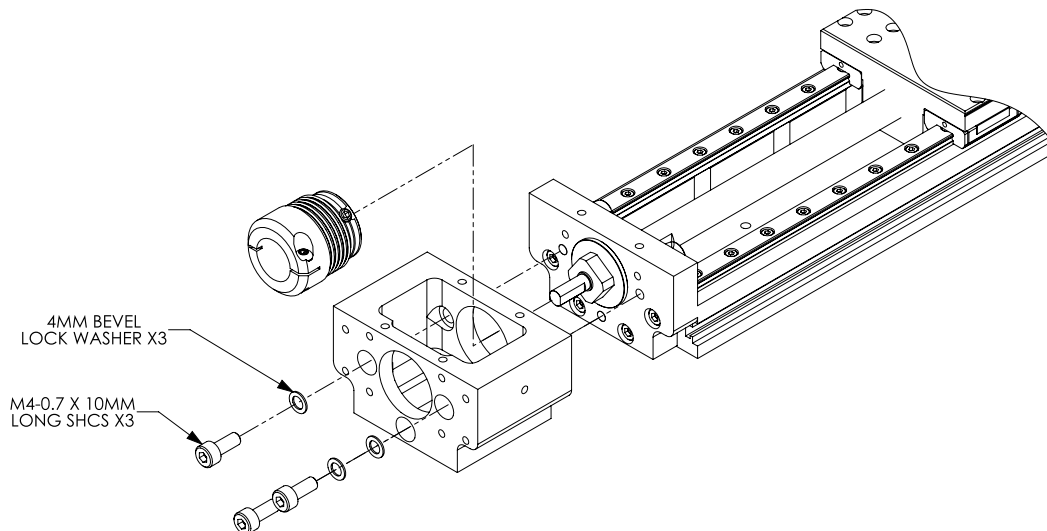
MOUNT COMPATIBILITY

Mount Compatibility			
Motor Frame Size	Motor Type	LAHP-33/33W Series	
		Motor Bracket PN	Coupling PN
<i>SVL-202 / SVL-202B</i> <i>(60mm frame)</i>	Servo	LAHP-202-33MTRBKT	LAHP-33-CPL-202

ASSEMBLY INSTRUCTIONS

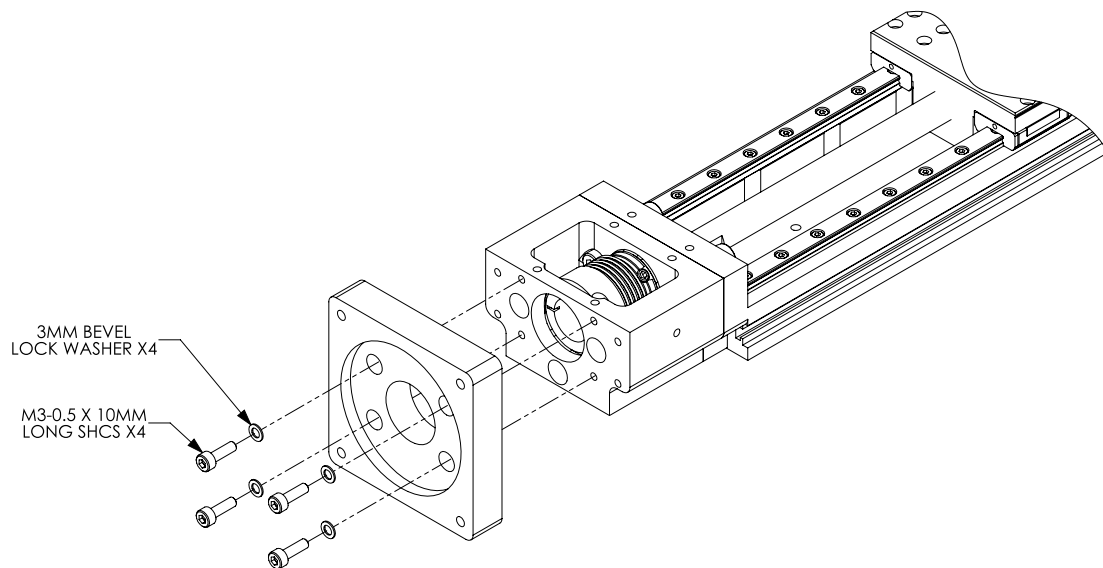
The following illustrations show how to install the motor mount to the actuator. These steps only apply to LAHP-33 series actuators.

- 1) Place the coupling (sold separately, see table) into the motor mount frame and slide onto the shaft on the end of the actuator. Tighten the screw on the coupling to a torque of 1.5 Nm (13.3 in-lbs) to secure to the actuator.
- 2) Secure the mount using the three (3) supplied SHCS and three (3) washers.

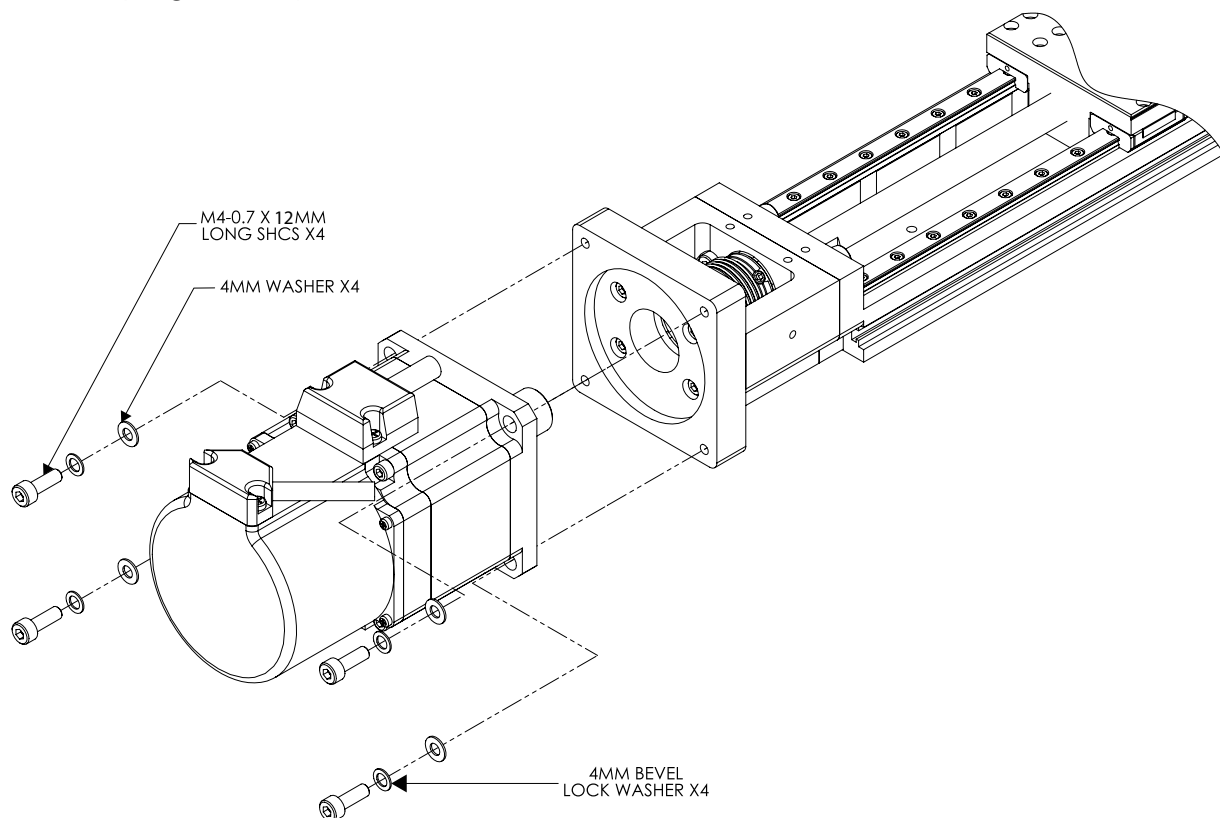


NOTE: Ensure Actuator Shaft and Motor Shaft are clean of grease and debris prior to installing coupling.

- 3) Secure the plate to the end of the mount using the four (4) supplied SHCS and four (4) washers.



- 4) Slide the coupling (sold separately, see table) through the plate, into the mount frame and onto the shaft of the actuator.
- 5) Slide the [SVL-202](#) or [SVL-202B](#) servo motor shaft through the plate and into the coupling and secure to the plate using the four (4) supplied SHCS and eight (8) washers. Tighten the Torx screw, in the coupling, to a torque of 2 Nm (17.7 in·lbs) to secure to the motor shaft.



NOTE: When mounting motor, orient so that motor cables are directed for best cable management in final overall installation.



NOTE: Perform these steps with the actuator shaft in the vertical position to minimize axial misalignment of the motor.

6) Place the cover over the mount and secure using the four (4) supplied SHCS and four (4) washers.

