



# SSP

Safety System Products

## Data sheet ZEUS 11-03 00 00

### Enabling-/Control unit

- Robust housing in IP65 and IP67
- Modular design
- Ergonomic design
- Combination of consent button and control unit
- Universal connection for self-assembly with terminals



**we simplify safety**



## Safety System Products

### ZEUS

### General

#### General data

Type designation	ZEUS 11-03 00 00
Function type	Approval & operating unit
Approvals	TÜV, CE

#### Safety data

B10d value enable button	100.000
B10d value emergency stop button	100.000
Standards	
- 3-stage enabling switch	IEC60947-5-1, IEC60947-5-8, ISO12100-1, IEC60204-1
- Emergency Stop	EN 60947-5-5/A1:2005, EN 60947-5-1:2004, EN ISO 13850:2008
- EMV	DIN EN 55011:2009 + A1:2010, DIN EN 61000-4-3:2006 + A1:2008 + A2:2010, DIN EN 61000-4-6:2009

#### Environmental conditions

Storage temperature	-40°C ... 80°C
Operating temperature	-5°C ... 60°C
Protection class according to IEC/EN 60664	IP65, IP67
Clearance and creepage distances according to IEC/EN 60664	
- Overvoltage category	3
- Contamination level	III

#### Mechanical data

Dimensions (W x H x D)	
- Width	69 mm
- Length	71 mm
- Height	210 mm
Weight	330-400 g - depending on features and variant
Mechanical service life	100.000 cycles
Screw torque	0,8 Nm

#### Material

- Housing	PA6.6 30% GF, black
- Base plate	V2A
- Enabling switches	Silikon

#### Base plate

- Without mounting bracket	No attachment possible
- Screw connection	M20 female thread

#### Electrical data

Supply voltage UB	24V DC ± 5%
-------------------	-------------

**we simplify safety**



## Safety System Products

### ZEUS

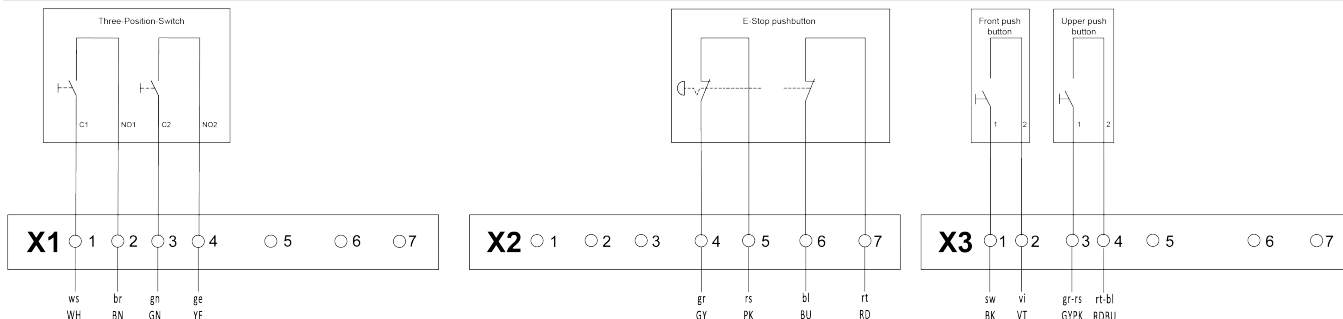
### General

Rated operational voltage U <sub>e</sub>	DC: 30 V
Rated operational current I <sub>e</sub>	DC: 2,5 A
<b>Enabling switches</b>	
- Switch type	2 Changeover contacts
- Service life	
- Position 1>2>1	1.000.000 cycles
- Position 1>2>3>1	100.000 cycles
- Rated operational voltage U <sub>e</sub>	DC: 30V
- Rated operational current I <sub>e</sub>	DC: 1A
- Contactresistor	max. 50 m ohm (initial value)
<b>Emergency stop switch</b>	
- Switch type	2 Opening contacts
- Mechanical service life	50.000 cycles
- Electrical service life (at nominal load)	50.000 cycles
- Rated operational voltage U <sub>e</sub>	24V
- Rated operational current I <sub>e</sub>	2A
- Contact resistance	max. 50 m ohm (initial value)
<b>Additional button on the front</b>	
- Switch type	1 Closing contact
- Mechanical service life	1.000.000 cycles
- Electrical service life (at nominal load)	1.000.000 cycles
- Rated operational voltage U <sub>e</sub>	
- Rated operational current I <sub>e</sub>	
- Contact resistance	max. 50 m ohm (initial value)
<b>Additional button on the top</b>	
- Switch type	1 Closing contact
- Mechanical service life	1.000.000 cycles
- Electrical service life (at nominal load)	1.000.000 cycles
- Rated operational voltage U <sub>e</sub>	
- Rated operational current I <sub>e</sub>	
- Contact resistance	max. 50 m ohm (initial value)
<b>Connetion</b>	Spring-loaded terminals
Cross-section of connection	0,14 - 0,34 mm <sup>2</sup>

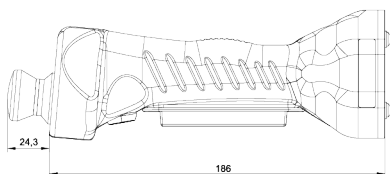
### ZEUS

### Pictures

#### Pinout



#### Dimensions





## ZEUS

## Equipment

### Safety relay series S2

- Item number

SP-K-70-001-00

### ZEUS

### Equipment

Additional hook set for Zeus

ZEUS ZHS

SP-X-85-801-00



enabling-/operating unit

---

ZEUS bracket for mounting on

Zeus H2

SP-X-85-800-10



aluminium profiles