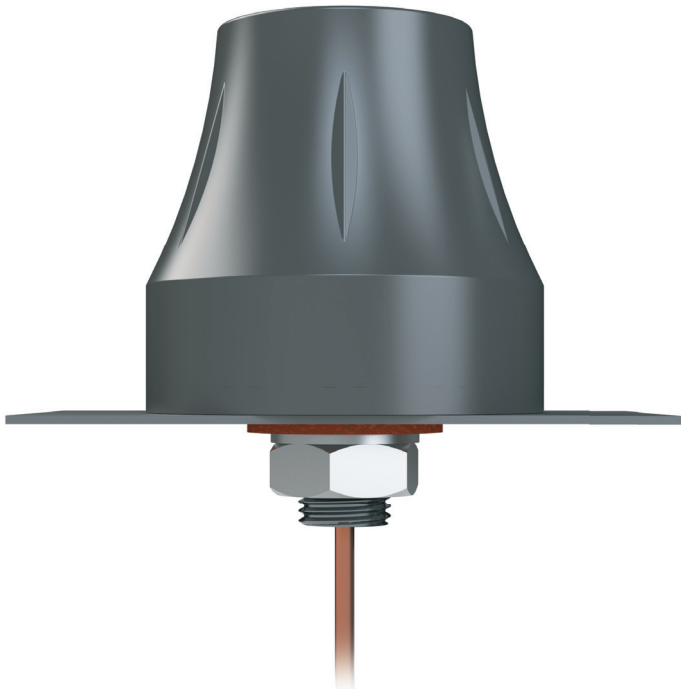


STRIDE[®] ANTENNA

MODEL #SE-ANT250

DOME 2.4 GHz WiFi ANTENNA, PANEL MOUNT
FOR USE WITH SE-SL3011-WF



Features

- 2.4 GHz WiFi
- Low profile, 48mm height and 50mm diameter
- UV and vandal resistant ABS housing
- Heavy duty screw mount
- 3-meter low-loss RG-316 cable
- RP-SMA Male connector
- IP67 compliant
- Extended operating temperature range
- RoHS Compliant

Electrical Specifications

Communication System	700 LTE/AMPS/GSM	DCS/PCS/UMTS	2700 LTE	2.4 GHz WiFi
Frequency (MHz)	700-960	1710-2170	2500-2800	2400-2483
Efficiency	40%	55%	40%	38%
Peak Gain (dBi)	1.2	3.2	2.5	1.5
Avg. Gain (dBi)	-4.5	-2.5	-4.5	-4.5
VSWR	< 3.0:1			
Impedance	50Ω			
Polarization	Linear			
Radiation Pattern	Omni-directional			
Input Power	5W			

Environmental Specifications

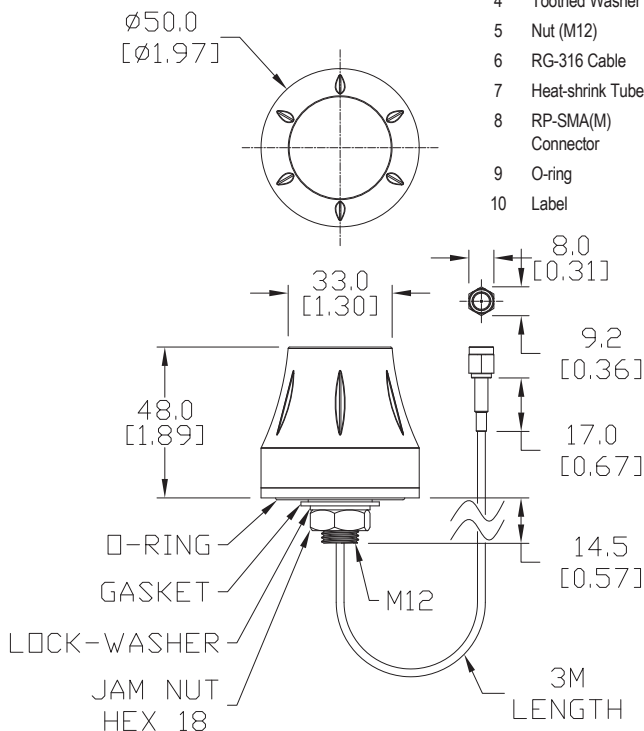
Operating Temperature Range	-40°C to 85°C [-40°F to 185°F]
Storage Temperature Range	-40°C to 105°C [-40°F to 221°F]
Relative Humidity	Up to 95% non-condensing

NOTE: ANTENNA IS REQUIRED AND MUST REMAIN CONNECTED DURING OPERATION

Mechanical Drawing unit: mm [in]

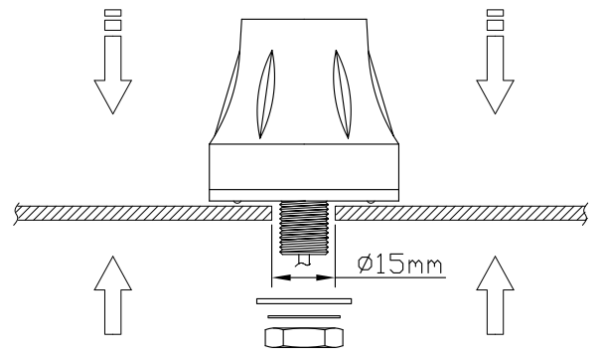
Materials

1	Housing Top	ABS Black
2	Housing Bottom	ABS Black
3	Gasket	POM Red
4	Toothed Washer	Iron Zinc
5	Nut (M12)	Copper Nickel
6	RG-316 Cable	FEP Brown
7	Heat-shrink Tube	PE Black
8	RP-SMA(M) Connector	Brass Alu Plated
9	O-ring	NBR Black
10	Label	PET White



Mounting Instructions

Recommended torque: 2.94 N·m [26 lb·in]
 Maximum torque: 3.92 N·m [34.7 lb·in]



Additional Help and Support

- For additional product support, specifications, and installation, a User Manual, SE-SLVPN-USER-M, is available for the accompanying VPN Router as a downloadable PDF file from the Online Documentation area of www.AutomationDirect.com
- For additional technical support and questions, call our Technical Support team @ 770-844-4200.

