

STRIDE[®] ANTENNA

MODEL #SE-ANT110

WHIP/TILT LTE ANTENNA, CONNECTOR MOUNT
FOR USE WITH SE-SL3011-4G AND SE-SL3011-4GG

Features

- Rotatable hinge design for optimal reception
- 7cm long
- SMA Male connector
- Top quality housing with brass hinge and connector
- Extended operating temperature range
- RoHS Compliant

Electrical Specifications										
Communication System	700 LTE	AMPS	GSM	DCS	PCS	UMTS	2300 LTE	2700 LTE	3500 LTE	3700 LTE
Frequency (MHz)	703–803	824–896	880–960	1710–1880	1850–1990	1710–2170	2300–2400	2490–2690	3400–3600	3600–3800
Efficiency*	18%	22%	22%	25%	30%	30%	17%	32%	28%	43%
Peak Gain (dBi)*	-3	-2.6	-3	0.9	0.9	0.9	-1.3	1.1	1.8	3.1
Impedance	50Ω									
Polarization	Linear									
Radiation Pattern	Omni-directional									
Input Power	10W									

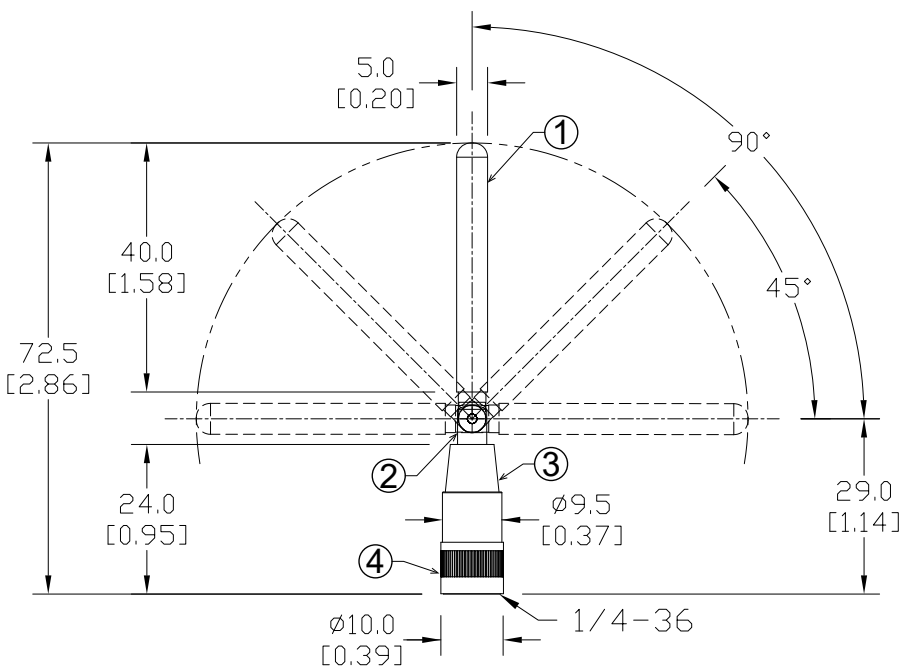
* In free space

Environmental Specifications	
Operating Temperature Range	-40°C to 85°C [-40°F to 185°F]
Storage Temperature Range	-40°C to 105°C [-40°F to 221°F]
Relative Humidity	Up to 95% non-condensing



www.AutomationDirect.com

Mechanical Drawing unit: mm[in]



Materials

1	Housing	POM Black
2	Hinge	Brass Ni Plated
3	Cap	POM Black
4	Connector	SMA Male (Brass)



NOTE: ANTENNA IS REQUIRED AND MUST REMAIN CONNECTED DURING OPERATION

Additional Help and Support

- For additional product support, specifications, and installation, a User Manual, SE-SLVPN-USER-M, is available for the accompanying VPN Router as a downloadable PDF file from the Online Documentation area of www.AutomationDirect.com
- For additional technical support and questions, call our Technical Support team @ 770-844-4200.

