

ACCESSORIES & ADD-ON SUBSCRIPTIONS



In this Appendix...

Antennas	A-2
4G LTE Antennas (for P/N SE-SL3011-4G)	A-2
WiFi Antennas, IEEE 802.11 b/g/n 2.4 GHz (for P/N SE-SL3011-WF)	A-3
Add-on Subscriptions & Licenses	A-4
Service Level Agreement	A-5
Cloud Logging	A-5
Cloud Notify	A-6
Data Top-up	A-6
Premium Branding	A-6

Antennas

The WiFi and 4G LTE variants of the StrideLinx VPN Router require external antennas to improve signal strength. The 4G LTE antennas use a standard SMA screw antenna connector, and the WiFi antennas use an RP-SMA screw antenna connector.

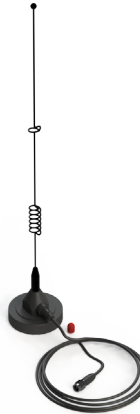
Several antenna options are available, as follows.

4G LTE Antennas (for P/N SE-SL3011-4G)

STRIDE 4G LTE antennas are available in three versions, providing direct connection, magnetic mount, and panel mount options. Two (2) LTE antennas are required per 4G router.



STRIDE whip/tilt LTE antenna, connector mount.



STRIDE whip/straight LTE antenna, magnetic base mount, 9.8ft/3m cable length.



STRIDE dome LTE antenna, IP67, panel mount, 9.8ft/3m cable length.

4G LTE Antenna Specifications			
	SE-ANT110	SE-ANT130*	SE-ANT150
Fits	SE-SL3011-4G		
Antenna Connector	SMA (M)		
Application	LTE, CDMA, GSM, HSPA, UMTS		
Impedance	50Ω		
Antenna Type	whip, tilt	whip, straight	dome
Cable Length	N/A	3m [9.8 ft]	3m [9.8 ft]
Frequency Range	700–960MHz / 1.71–3.8 GHz	700–960MHz / 1.71–3.5 GHz	700–960MHz / 1.71–2.7 GHz
Gain	-3.0 dBi / 0.9 dBi	-2.5dBi / 0.1dBi	1.2 dBi / 3.2 dBi
Height	2.84 in	13 in	1.89 in
IP Rating	–	–	IP67
Maximum Power	10W	50W	5W
Mounting Screw Torque	NA	NA	2.94 N·m

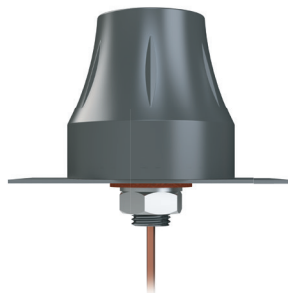
* Gains listed are based on the antenna being mounted on a suitable ground plane.

WiFi Antennas, IEEE 802.11 b/g/n 2.4 GHz (for P/N SE-SL3011-WF)

STRIDE WiFi antennas are available in two versions, providing direct connection and panel mount options.



STRIDE whip/straight 2.4 GHz WiFi antenna, IP65, connector mount.



STRIDE dome 2.4 GHz WiFi antenna, IP67, panel mount, 9.8ft/3m cable length.

802.11 b/g/n 2.4 GHz WiFi Antenna Specifications		
	SE-ANT210	SE-ANT250
Fits	SE-SL3011-WF	
Antenna Connector	RP-SMA (M)	
Application	802.11 b/g/n	
Impedance	50Ω	
Antenna Type	whip, straight	dome
Cable Length	NA	3m [9.8 ft]
Frequency Range	2.4–2.5 GHz	2.4–2.5 GHz
Gain	1.8 dBi	1.5 dBi
Height	1.2 in	1.89 in
IP Rating	IP65	IP67
Maximum Power	1W	5W
Mounting Screw Torque	NA	2.94 N-m

A

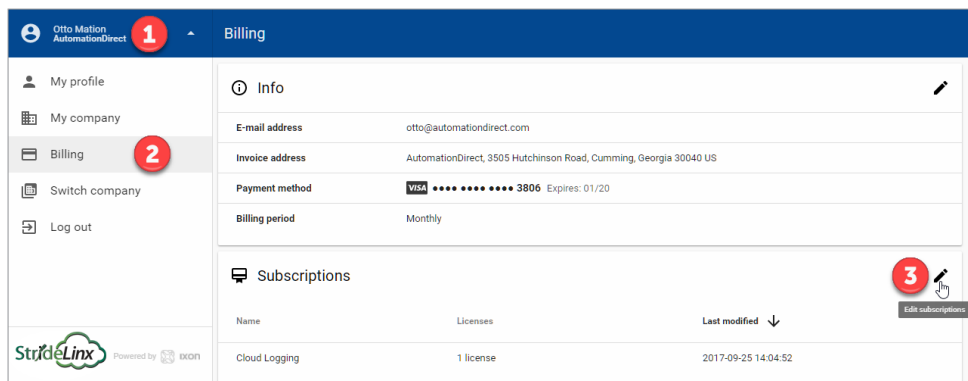
Add-on Subscriptions & Licenses

These subscriptions and licenses provide added services to your StrideLinX remote access. These are not needed for the basic function of the VPN remote access, but can be added to enhance the value of the platform to you and your customers.

StrideLinX Add-on Subscriptions & Licenses		
Part #	Description	Features
SE-SL001	Service Level Agreement (SLA)	99.6% availability, 4-hour max consecutive downtime per router
SE-SL010	Cloud Logging, Standard Data logging enabled at 1,000 data samples per hour per router	Unlimited cloud storage for up to 7 years with active subscription, unlimited real time and user configurable dashboards, unlimited data reports, unlimited data tags, Modbus, EtherNet/IP, Siemens S7 and OPC UA protocol support
SE-SL011	Cloud Logging, Professional Data logging enabled at 5,000 data samples per hour per router	
SE-SL012	Cloud Logging, High Resolution Data logging enabled at 20,000 data samples per hour per router	
SE-SL020	Cloud Notify License	Prioritized push and email notifications for lost device connections and customized trigger conditions. Supports Modbus, EtherNet/IP, Siemens S7 and OPC-UA protocols.
SE-SL030	Data Top-up, 5GB	Additional monthly data traffic by 5GB per company account
SE-SL031	Data Top-up, 15GB	Additional monthly data traffic by 15GB per company account
SE-SL032	Data Top-up, 50GB	Additional monthly data traffic by 50GB per company account
SE-SL040	Premium Branding License	Includes rebranded StrideLinX platform with custom company domain and contact/support information.

All add-on subscriptions and licenses are available at www.StrideLinX.com. Log into your account for all subscription purchases, upgrades, and cancellations.

To order a subscription, credit card information must be added to your account on the Billing page. Subscriptions can be purchased from the Billing page by (1) clicking your user name, (2) clicking Billing, and (3) clicking the “Edit subscription” (pencil) icon under “Subscriptions”. Cloud data logging subscriptions (and 30-day free trials) may also be added by clicking on a device and selecting SUBSCRIPTIONS on the third-tier menu.



To terminate a subscription, navigate to Billing–Subscriptions and “Edit Subscriptions”. It is important to note that even though you may Deactivate a cloud data logging subscription, you must still terminate it or you will continue to be billed. You cannot terminate an activated data logging subscription. It must first be deactivated at the router and then can be terminated in the Billing–Subscriptions settings. You may want to continue the data logging subscription to easily transfer the datalogging license to other routers in your company. Deactivating or terminating your subscription will permanently erase the stored data. Be sure to save any data before permanently deleting it.

All subscriptions can be purchased on a recurring monthly or annual basis. Annual purchases receive a free month of subscription. Subscriptions are automatically renewed until they are canceled. There is no prorating or refunds on subscription services.

Add Data top-up and SLA subscriptions from the Subscription Edit link (3) shown in the previous screenshot.

Service Level Agreement

Our services are normally provided as is and on a best-effort basis. However, for customers who prefer a specific level of service a Service Level Agreement (SLA) is available for an additional fee. The SLA provides guarantees of 99.6% availability and 4-hour maximum consecutive downtime per router. Full terms of the agreement are available for download from the Subscription Edit link discussed previously.

Cloud Logging

The Cloud Logging subscription is a completely cloud-based solution for gathering remote data from your control components. All the values you have programmed in the PLC can be logged by the StrideLinX logger, easily and securely. All Cloud Logging subscriptions offer unlimited

live monitoring and historical data reporting dashboards, with unlimited number of data tags and unlimited storage for up to 7 years.

Cloud Notify

Cloud Notify allows you to receive notification of conditions occurring in your equipment. For instance, you can set alarms to be notified when your machine breaks down, needs maintenance or when a temperature runs too high. You can categorize notifications as low, medium or high priority, and receive only those notifications that are of importance to you.

Cloud Notify and the StrideLinX router work together seamlessly. Simply add a Cloud Notify license to a router on the StrideLinX platform, configure your triggers and the router will start monitoring your machine immediately.

Each Cloud Notify license is assignable to one router, and cannot be reassigned.

Data Top-up

The intended use of the StrideLinX platform is secure remote access to industrial control equipment for remote service. A monthly allowance of 5GB data traffic per company account is included, and is sufficient in most cases to accomplish remote service.

When the platform is used for other purposes, the data traffic may exceed the 5GB allowance. The StrideLinX platform includes optional Data Top-up subscriptions to increase the monthly limit by an additional 5GB (SE-SL030), an additional 15GB (SE-SL031) or an additional 50GB (SE-SL032)

If the data traffic for a company reaches the monthly limit, further data traffic will be throttled to 50kbit/sec. This is adequate to access and program a PLC.

Although data usage is affected by the number of users accessing the platform, we expect the most significant data usage to be from an IP camera connected on the platform.

Any Cloud Logging subscription data does not count toward the data traffic allowance and is not subject to throttling.

Premium Branding

The StrideLinX premium branding license extends the level of customization available on the StrideLinX platform. The license includes rebranding of the StrideLinX platform with a custom company domain and contact/support information.

Premium branding can be purchased and activated from the My Company page.

See Appendix J for more detail on Premium Branding features.