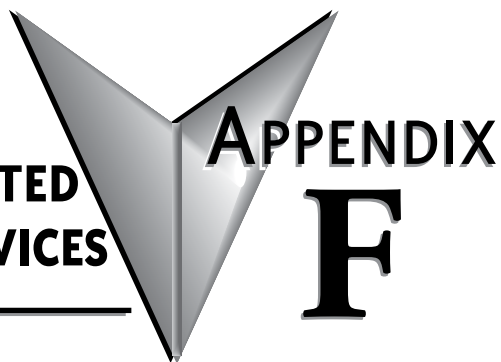


CAPABILITIES OF CONNECTED AUTOMATIONDIRECT DEVICES



In this Appendix...

Network Topology	F-2
Network with StrideLinx VPN router using wired or WiFi network connectivity	F-3
Network with StrideLinx VPN router using 4G cellular network connectivity	F-4
Device Capabilities	F-5

Network Topology

To facilitate description of the capabilities of various AutomationDirect product lines when connected to a StrideLinx VPN router, the overall topology of a network connecting plant devices to the StrideLinx Cloud can be divided into three zones, as illustrated in the two figures later in this appendix.

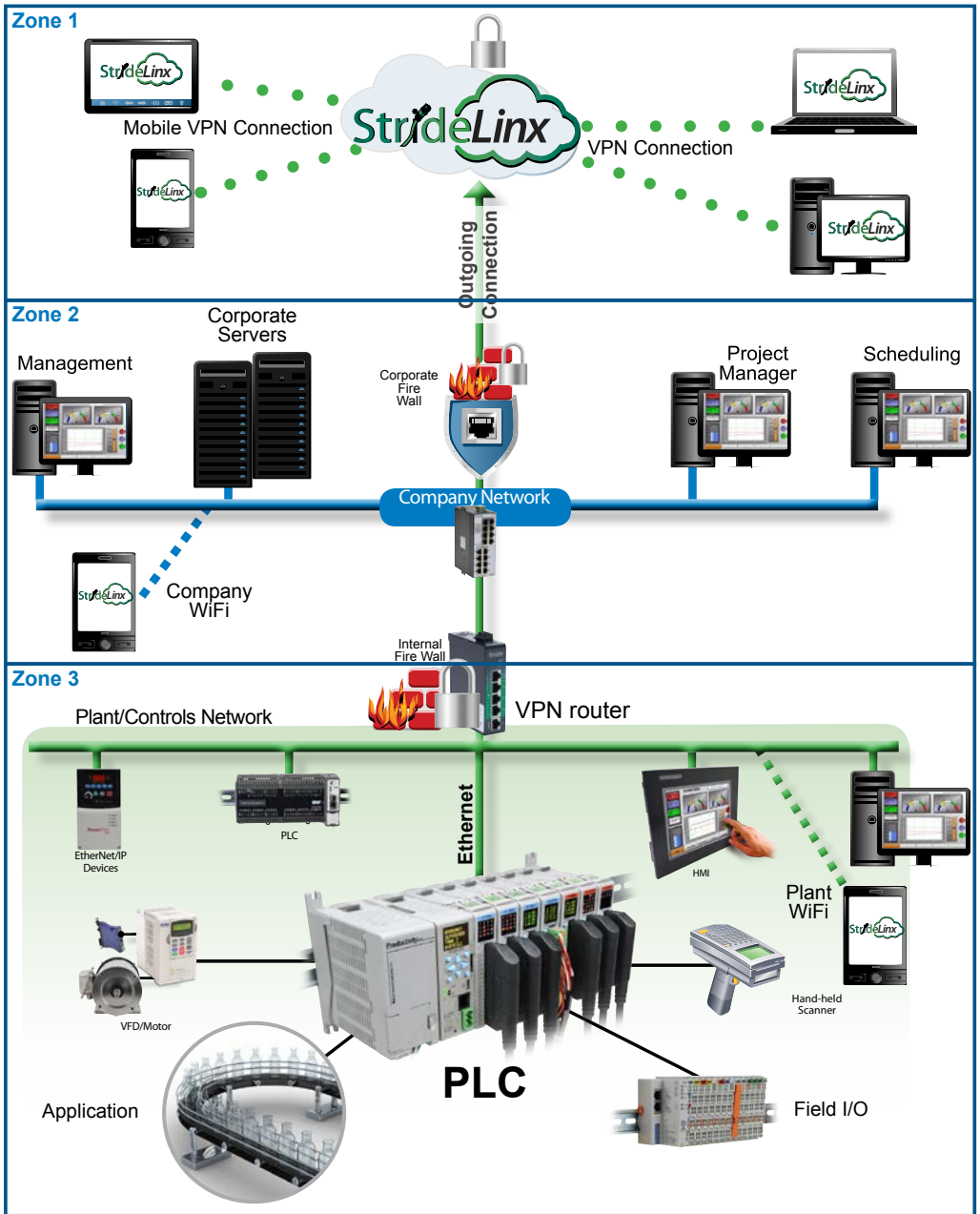
The zones are defined as follows.

- Zone 1 is outside the company network, and includes the StrideLinx Cloud and secure connections to it from various devices.
- Zone 2 is the company network, which exists behind a corporate firewall. This zone may include various computer systems, but is isolated from the plant/controls network by the internal firewall of the VPN router.
- Zone 3 comprises the devices connected to the VPN router, and thus potentially capable of secure remote connection.

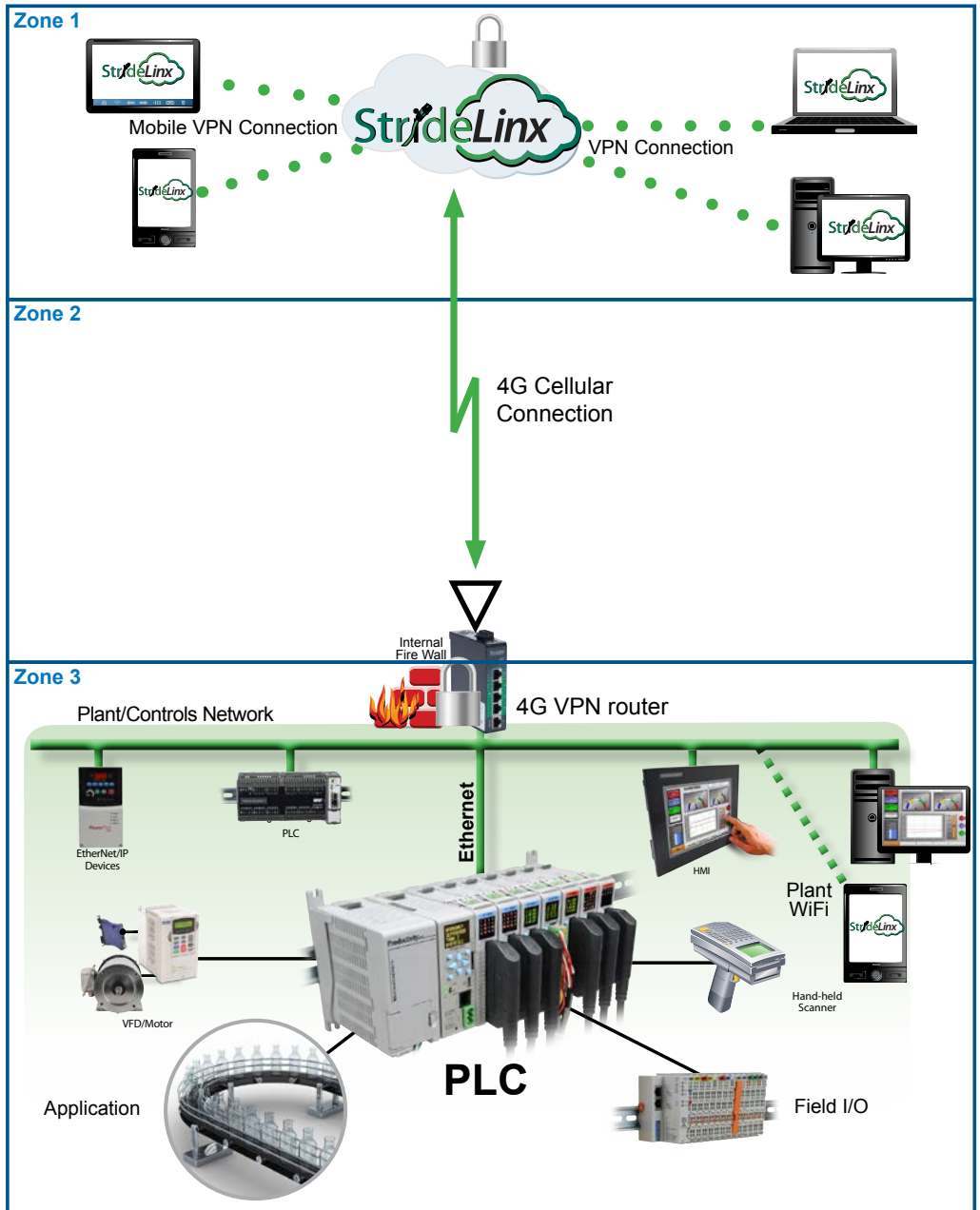


NOTE: Zone 2 does not participate at all in StrideLinx communications when a 4G cellular connection is used on the VPN router, since the 4G connection does not traverse the company network.

Network with StrideLinX VPN router using wired or WiFi network connectivity



Network with StrideLinx VPN router using 4G cellular network connectivity



Device Capabilities

The following table describes the capabilities of devices to establish communications connections across various network zones, as defined earlier.

Communications Capabilities of Devices Connected to StrideLinx Router						
Functionality	Zone 1->3 (StrideLinx App or Browser w/o VPN)	Zone 1->3 (VPN)	Zone 2->3 ^{1,6}	Zone 3->2 ⁶	Zone 3->1	Zone 3->3
Generic PLC programming SW (Windows)	N	Y	Y	NA	NA	Y
Productivity programming SW	N	Y	Y	NA	NA	Y
BRX programming SW	N	Y	Y	NA	NA	Y
CLICK programming SW	N	Y	Y	NA	NA	Y
C-more programming SW	N	Y	Y	NA	NA	Y
C-more Remote Access (PC)	N	Y	Y	NA	NA	Y
PxK/ C-more web server	Y ⁴	Y	Y	NA	NA	Y
PxK/ C-more FTP access (into PxK/ C-more)	N	Y	Y	NA	NA	Y
BRX/PxK/ C-more Email to Server (sent from BRX/PxK/ C-more)	NA	NA	NA	Y ²	Y ²	NA
PxK/ C-more FTP to PC (sent from PxK/ C-more)	NA	NA	NA	Y ²	Y ²	NA
PxK/ C-more mobile app (connect by WiFi)	N	Y ⁸	Y ³	NA	NA	Y
3rd party PLC or HMI web/VNC server	Y ⁵	Y	Y	NA	NA	Y
Windows-based machine control	N	Y	Y	NA	NA	Y
2nd StrideLinx Router (M2M or site-to-site)	NA	NA	NA	NA	N	NA

1. Connections from Zone 2 to 3 can be made through VPN on a PC but require firewall adjustments (port forwarding) for other devices. Consideration for security should be made before making firewall adjustments.
2. StrideLinx router firewall must be configured to allow internet access from the LAN side or allow access to corporate network. This data does not pass through the VPN tunnel.
3. StrideLinx router firewall must be configured to allow access to corporate network in order for the C-more Mobile App to connect.
4. PxK/C-more web server must be configured in StrideLinx Cloud (services tab) to provide the shortcut on the router dashboard page.
5. Web/VNC server capability depends on 3rd party device capability. Web/VNC server must be configured in StrideLinx Cloud (services tab) to provide the shortcut on the router dashboard page.
6. Connections to/from Zone 2 are not applicable when using a 4G cellular connection.
7. NA is used when the device is not located in the starting or ending zone.
8. Router firmware versions v3.13 and newer support connection from the C-more Mobile App across a mobile VPN tunnel (app versions 2.0.0 and newer).



NOTE: The StrideLinx router & cloud should operate with any TCP/UDP Ethernet device designed with remote connectivity functions such as unicast messaging, default gateway support and retry timeout parameters. ADC tech support can assist with basic networking/connectivity troubleshooting for any device connected to a StrideLinx router, but only officially supports ADC hardware and programming software tools.