



APPENDIX

B

CONSOLE PORT ACCESS

In this Appendix...

- Console Port Access:..... B-2
 - Serial Access..... B-2
 - Telnet Access..... B-6
- View Types..... B-8

Console Port Access:

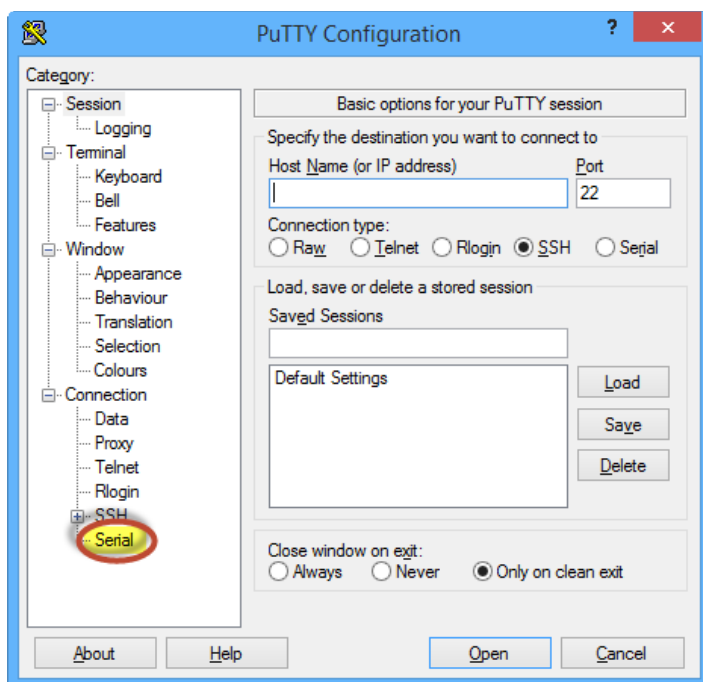
Serial Access

There are a variety of ways to access a switch.

- Web browser via Ethernet connection at a switch port,
- Command Prompt via Ethernet connection at a switch port,
- Telnet via USB connection

This manual details switch management by the web browser. The USB console port offers alternative access to the switch management and this appendix details how to connect through the USB port. The user can access a switch by its USB Console port and PuTTY or Windows Hyper Terminal or other software that supports serial port connection. The following example shows how to use the Console port and PuTTY to access the switch.

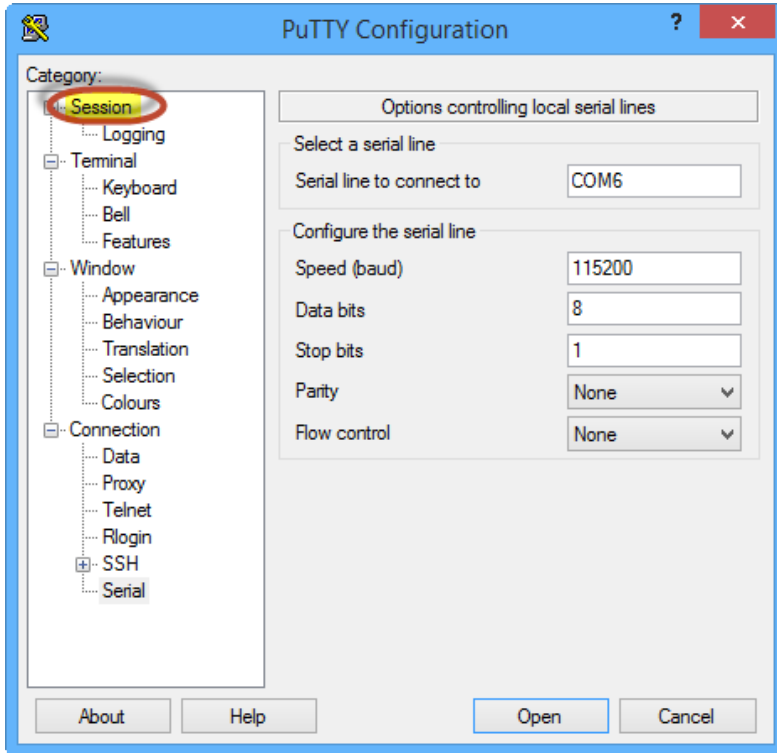
1. Install the mini USB serial port driver “Mini USB_driver.exe”. The driver may be downloaded from the AutomationDirect downloads page.
2. Use a mini USB cable to connect the PC USB and the switch Console port
3. Open PuTTY on your PC. Click the Serial option at the bottom of the Navigation Tree on the left.



4. For the Serial Line, enter the COM port assigned to your switch. The COM port number is shown in Windows Device Manager under “Ports (Com & LPT)”. The settings for the serial line are:

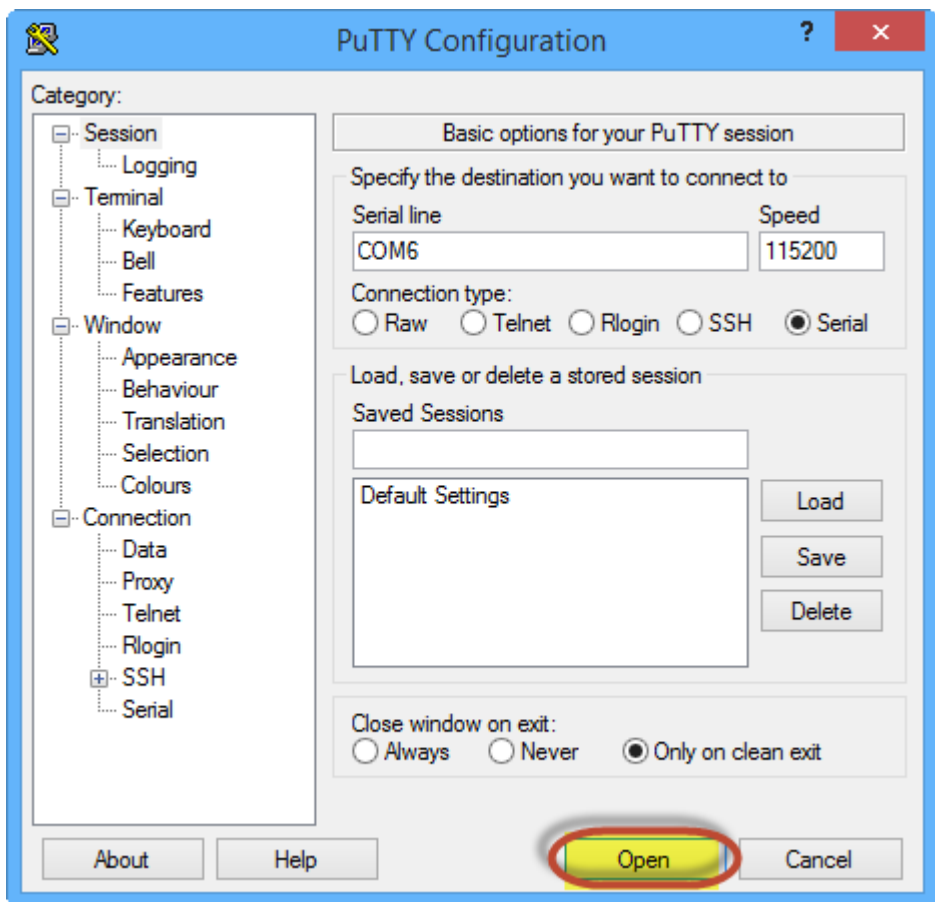
- Baud - 115200
- Data bits - 8
- Stop bits - 1
- Parity - None
- Flow control - None

Then Click the Session selection at the top of the Navigation tree on the left.

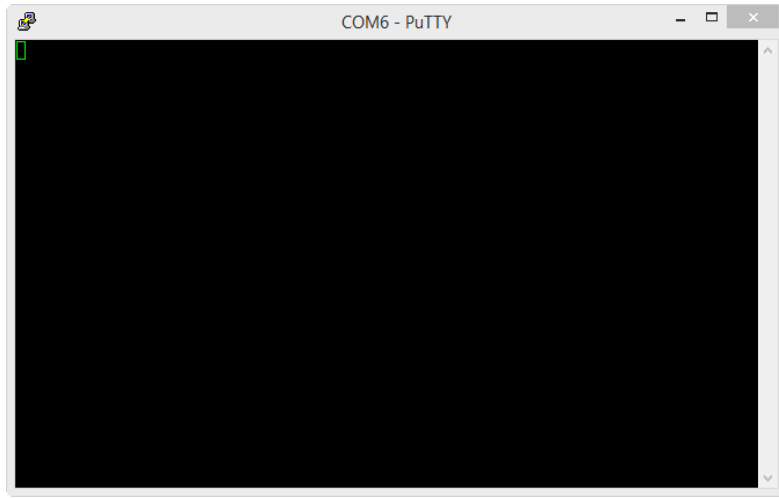


B

5. Click on the Serial radio button in the top pane, and verify the Serial line COM port number and Speed are correct. Then click the Open button at the bottom of the window.



6. Hit Enter on your keyboard to move to the Password request. Then carefully enter the password, admin is the default.

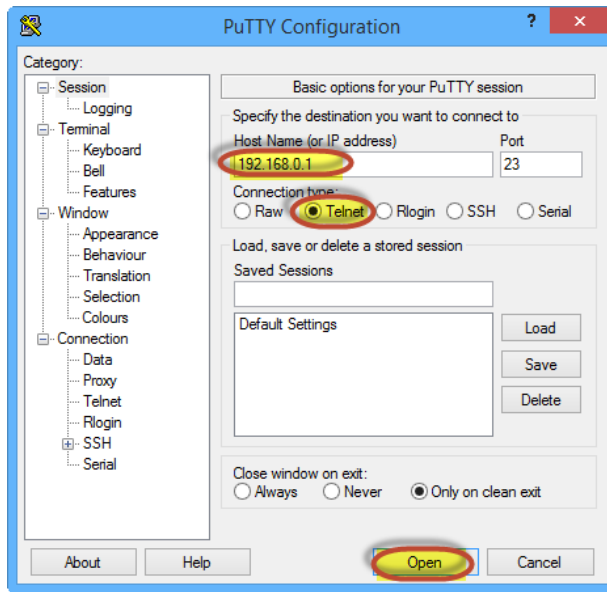


B

Telnet Access

For a switch connected to the PC by an Ethernet cable, and the switch's IP Address is known, PuTTY or another terminal emulator application may be used to access switch management.

1. Open PuTTY and Select the Telnet Radio button, then enter the switch IP address and Click Open.



B

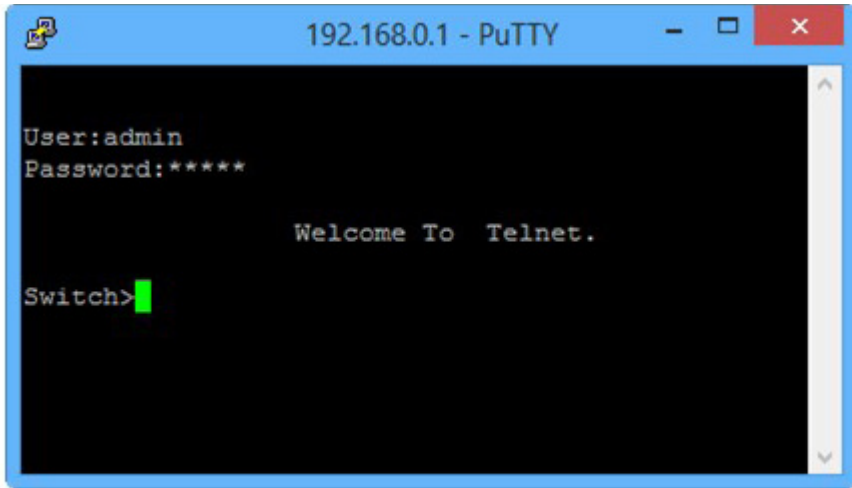


NOTE: The switch default IP address is 192.168.0.1. If the IP address is unknown, you must use the Serial Access to connect to the switch, login and enter the "show interface" command.

```

COM6 - PuTTY
Switch>show interface
marfec (unit number 0):
  Flags: (0x8063) UP BROADCAST MULTICAST ARP RUNNING
  Type: ETHERNET_CSMACD
  Internet address: 192.168.0.1
  Netmask 0xfffff000 Subnetmask 0xfffff000
  Net 0xc0a80000 Subnet 0xc0a80000
  Gateway address: 192.168.0.1
  Mac 001e.cd1a.61a8
lo (unit number 0):
  Flags: (0x8069) UP LOOPBACK MULTICAST ARP RUNNING
  Type: SOFTWARE_LOOPBACK
  Internet address: 127.0.0.1
  Netmask 0xff000000 Subnetmask 0xff000000
  Net 0x7f000000 Subnet 0x7f000000
  Gateway address: 192.168.0.1
Switch>
    
```

2. Carefully enter the user name, admin, and the password, admin.



View Types

When logging into CLI (Command Line Interface) by Console port or Telnet, a user can navigate to different views as shown below.

View Switching			
View Prompt	View Type	View Function	Command for View Switching
SWITCH>	User View	<ul style="list-style-type: none"> • Show currently used commands • Show IP address • Show software version 	Input "enable" to enter the management view
SWITCH #	Management View	<ul style="list-style-type: none"> • Show switch configuration information • Upload/download configuration file • Upload/download log record • Restore default configuration • Save current configuration • Software update • Reboot switch 	<ul style="list-style-type: none"> • Input "configure terminal" to switch from the management view to the configuration view; • Input "exit" to return to the user view
SWITCH (config) #	Configuration View	Configure all switch functional modules	Input "exit" or "end" to return to the management view

When a switch is configured by command line, "?" can be used to get command help. In the help information, there are different parameter descriptions, for example, <1, 255> means a number range; <H.H.H.H> means an IP address; <H:H:H:H:H:H> means a MAC address; word<1,31> means a string range. In addition, **INSERT DOWN ARROW SYMBOL** and **INSERT UP ARROW SYMBOL** can be used to scroll through the last used 10 commands.