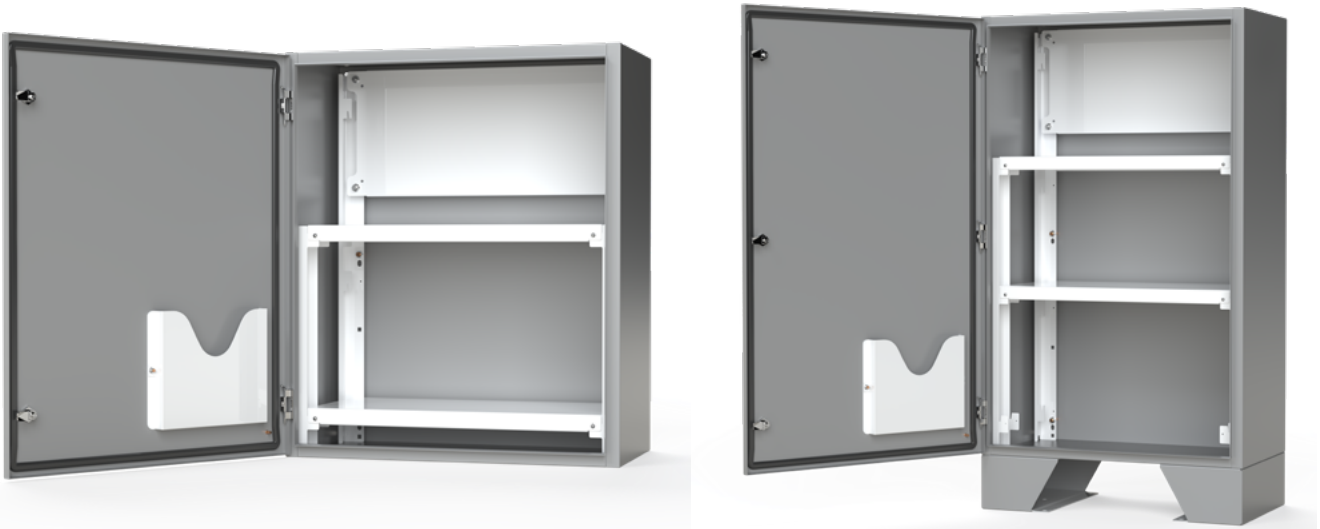
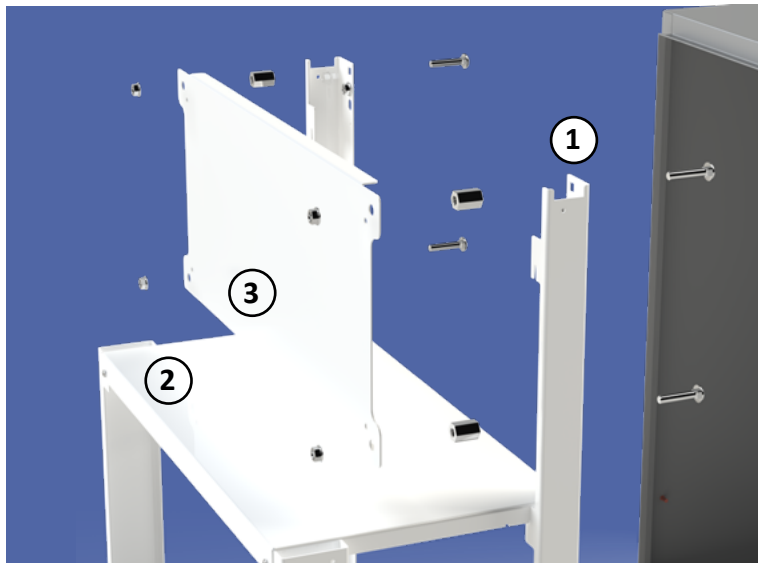


STATIONARY SHELF



Stationary shelves in conjunction with an SCE Enclosure can accommodate batteries, inverters, chargers or additional equipment. They are simple to install by using existing mounting studs inside the enclosure. Sealed enclosures with batteries will require ventilation to dissipate outgassing from the batteries.

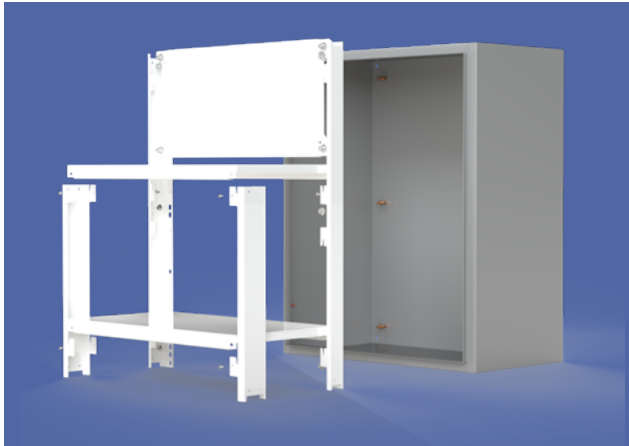
*For heavy loads such as multiple batteries- enclosure is recommended to be floor mounted and installed on Floor Stand Kit, with batteries installed after enclosure installation.



Ref. #	Part #	Description	Height	Width	Depth	Compatible Enclosure (Wall Mount)	Compatible Part Numbers Steel and Stainless	Compatible Part Numbers Steel and Stainless
1	SCE-SBK36	Shelf Bracket (4Pc Set)	35.00	2.00	2.00	36 inch Height	SCE-36EL****LP/LPPL	SCE-36H****LP/SSLP
	SCE-SBK48	Shelf Bracket (4Pc Set)	47.00	2.00	2.00	48 inch Height	SCE-48EL****LP/LPPL	SCE-48H****LP/SSLP
2	SCE-SBS3016	Stationary Shelf (Qty 2)	1.50	26.50	13.85	30 inch Wide 16 inch Deep	SCE-**EL3016LP/LPPL	SCE-**H3016LP/SSLP
	SCE-SBS3616	Stationary Shelf (Qty 2)	1.50	32.50	13.85	36 inch Wide 16 inch Deep	SCE-**EL3616 LP/LPPL	SCE-**H3616LP/SSLP
3	SCE-30BP15	Subpanel	12.00	27.00	0.88	30 inch Wide	SCE-**EL30** LP/LPPL	SCE-**H30**LP/SSLP
	SCE-36BP15	Subpanel	12.00	33.00	0.88	36 inch Wide	SCE-**EL36** LP/LPPL	SCE-**H36**LP/SSLP

Space between shelves - 12.60 inches

Shelf capacity - 300lbs equally distributed



Installation Instructions

1. Attach the subpanel (3) with a stand off to the taller rear shelf brackets (1) by using a carriage bolt and coupling nut.
2. Attach the subpanel and rear shelf bracket to the collar studs inside the enclosure.
3. Place shorter front shelf brackets (1) inside enclosure and set lower shelf (2) onto bracket bends and secure with self tapping screws. Repeat with upper shelf or shelves.

* Shelves are sold in sets of 2 and require a minimum of 2 shelves for the assembly. 48" model can utilize 3 shelves