

SOLAR SHIELD



Solar Shields assist in lowering the heat load from the sun and provides additional protection from rain and snow by shielding the top, sides, and rear.

Please note - due to the difference in mounting ear locations in LP and HLP enclosures, Solar Shields for HLP enclosures need an additional mounting bracket.

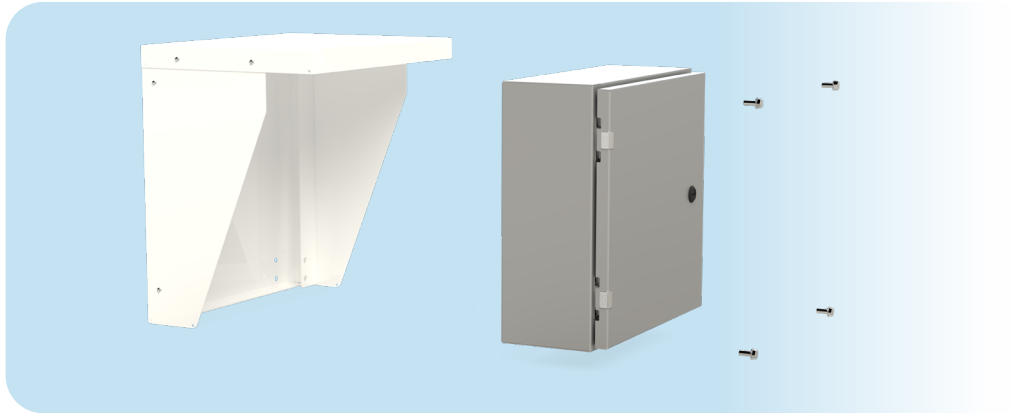


Solar Shield installation instructions:

Step 1: Attach side panels to the back plate with included self-tapping screws

Step 2: Attach top panel with included self-tapping screws

EL LP USAGE



Installation instructions:

Step 1: Align enclosure cutouts with Solar Shield mounting channel

Step 2: Secure with included screws

Solar Shield Part Number	For Use with EL LP Enclosures	For Use with EL LPPL Enclosures
SCE-SH1212M8	SCE-12EL12**LP	
SCE-SH1616M10	SCE-16EL16**LP	
SCE-SH2016M12	SCE-20EL16**LP	
SCE-SH2020M12	SCE-20EL20**LP	
SCE-SH2420M12	SCE-24EL20**LP	SCE-24EL20**LPPL
SCE-SH2424M12	SCE-24EL24**LP	SCE-24EL24**LPPL

HLP USAGE

*Additional mounting bracket needed



Mounting Bracket installation instructions:

Step 1: Attach clip nuts (8) to Solar Shield mounting channel

Step 2: Align mounting bracket to clip nut

Step 3: Secure with included screws



Installation instructions:

Step 1: Attach clip nuts (4) to mounting bracket

Step 2: Align mounting ears to clip nuts

Step 3: Secure with included screws

Solar Shield Part Number	For Use with Clamp Fastened Enclosures	Mounting Bracket for HLP Enclosures
SCE-SH1212M8	SCE-12H12**LP	SCE-HM12
SCE-SH1616M10	SCE-16H16**LP	SCE-HM16
SCE-SH2016M12	SCE-20H16**LP	SCE-HM16
SCE-SH2020M12	SCE-20H20**LP	SCE-HM20
SCE-SH2420M12	SCE-24H20**LP	SCE-HM20
SCE-SH2424M12	SCE-24H24**LP	SCE-HM24