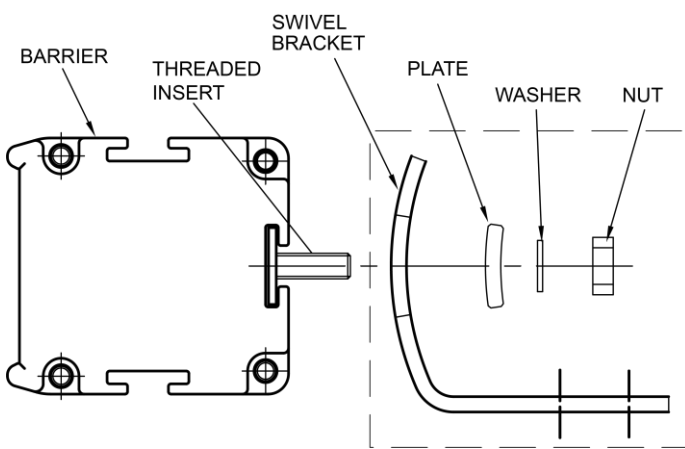


Set of 4/6 SFB-4SG / SFB-6SG adjustable fixing brackets

The present technical sheet is provided with the **SFB-4SG / SFB-6SG** adjustable fixing brackets set, to permit the customer to have the correct instructions about the fixing of these brackets on the SAFEGATE series light curtains.

ASSEMBLING THE BRACKETS WITH THE BARRIER

- Lodge the threaded insert provided with the barrier in the guide on the back of the profile.
- Mount the adjustable brackets on the profile following the scheme of Figure 1.
- Fix the bracket to the barrier tightening the plate, the washer and the nut.
- **THE COMPONENTS INSIDE THE DASHED BOX ARE CONTAINED IN THE FITTING BOX OF THE SFB-4SG / SFB-6SG BRACKETS.**



Code	Model	Description
1391950	SFB-4SG	Set of 4 fixing brackets
1391951	SFB-6SG	Set of 6 fixing brackets

Figure 1

ADJUSTMENT

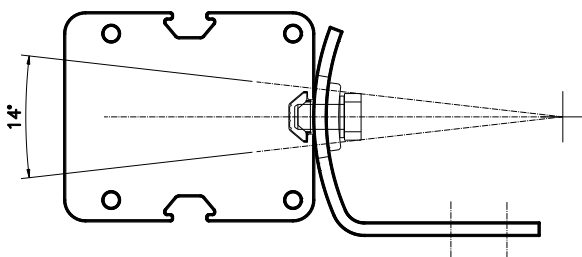


Figure 2

Centre mounting of the adjustable bracket.

Fine 14 degrees adjustment is available.

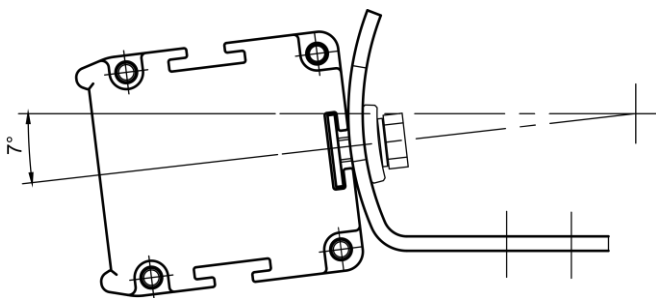


Figure 3

Adjustable bracket fixing with 7° left orientation.

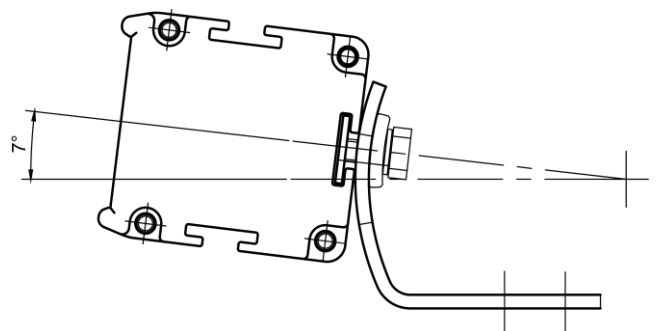


Figure 4

Adjustable bracket fixing with 7° right orientation.

