

# PRODUCT INFORMATION PACKET



Model No: 5KC49PN0155  
Catalog No: C235  
General Purpose Motor, 1 HP, 1 Ph, 60 Hz, 115/208-230 V, 56 Frame, DP



Regal and LEESON are trademarks of Regal Rexnord Corporation or one of its affiliated companies.  
©2025 Regal Rexnord Corporation, All Rights Reserved. MC017097E





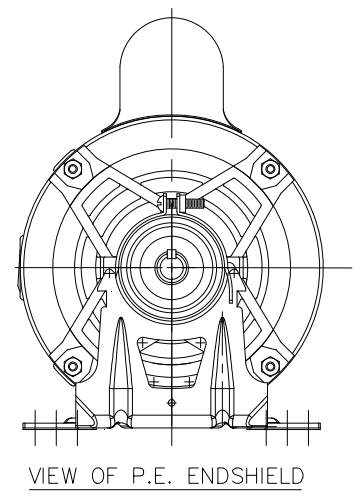
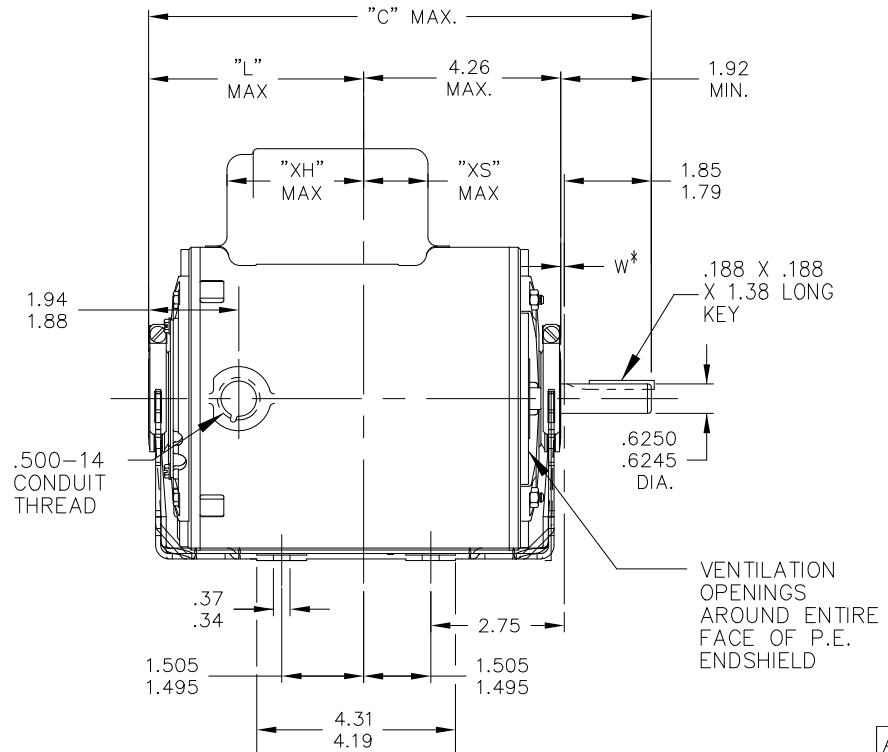
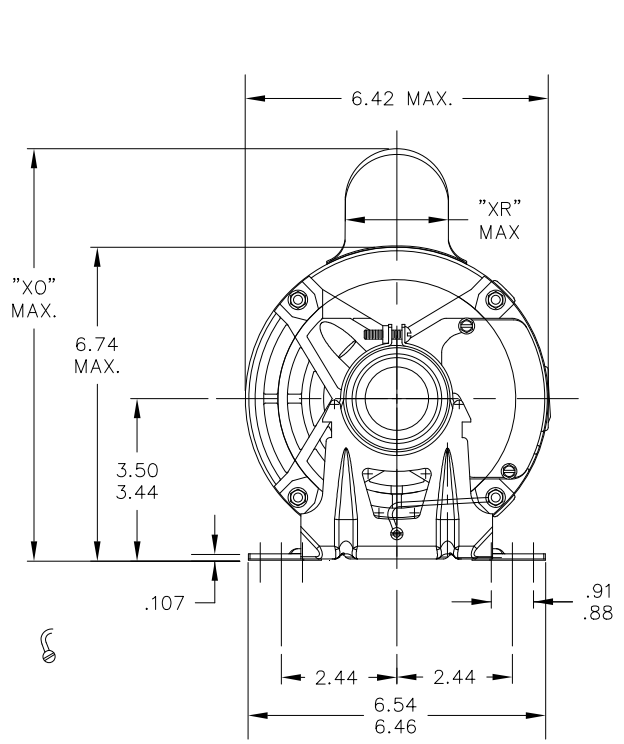
**Nameplate Specifications**

Phase	1	Output HP	1 Hp
Output KW	0.75 kW	Voltage	115/208-230 V
Speed	1725 rpm	Service Factor	1.15
Frame	56	Enclosure	Drip Proof
Thermal Protection	No Protection	Ambient Temperature	40 °C
Frequency	60 Hz	Current	13.6/6.7-6.8 A
Power Factor	0	Duty	Continuous
Insulation Class	B	KVA Code	K
Drive End Bearing Size	6203	Opp Drive End Bearing Size	6203
UL	Recognized	CSA	Y
CE	N		

**Technical Specifications**

Electrical Type	Capacitor Start Induction Run	Starting Method	Across The Line
Poles	4	Rotation	Selective Counterclockwise
Motor Orientation	Any	Drive End Bearing	Ball
Opp Drive End Bearing	Ball	Frame Material	Rolled Steel
Shaft Type	NEMA 56	Shaft Diameter	0.625 in
Outline Drawing	52A107622P3	Connection Drawing	52A105381AA

This is an uncontrolled document once printed or downloaded and is subject to change without notice. Date Created:11/13/2025



ALL DIMENSIONS ARE IN INCHES

CONTINUED ON 52A107799

\*W IS A VARIABLE CLEARANCE DUE TO VARIATIONS IN PARTS AND ASSEMBLY

9	KC	46	56	10.78	4.62	2.92	8.94	2.40	2.82		6.55
8	KC	49	56	11.38	5.22	3.63	8.62	2.08	2.12		7.15
7	KC	46	56	10.78	4.62	2.18	8.94	2.40	2.36		6.55
6	KC	49	56	11.38	5.22	3.63	8.22	1.60	2.12		7.15
5	KC	46	56	10.78	4.62	3.03	8.22	1.60	2.73		6.55
4	KC	42	56	9.95	3.79	2.20	8.22	1.60	2.34		5.72
3	KC	49	56	11.38	5.22	3.63	8.94	2.40	2.12		7.15
2	KC	42	56	9.95	3.79	2.20	8.94	2.40	2.34		5.72
1	KC	46	56	10.78	4.62	3.03	8.94	2.40	2.73		6.55
P	TYPE	FR SIZE	NEMA FR.	"C"	"L"	"XH"	"XO"	"XR"	"XS"		MIN. SHELL



NO.	REVISION	BY & DATE	CHK	ANG	TOLERANCES UNLESS SPECIFIED
15	ADDED GROUND SCREW AS PER ECR-0228170	MP 09/08/23			.X ±.1
14	CHANGED BASE PER ECR-0220283	AP 08/19/22	SN	.XX	±.03
13	ADDED PART # 8 PER SAMPLE DS13-2295	UD 06/21/13	GRB	.XXX	±.005
12	CHG "XS" DIMENSION PER IS08-2395	MD 07/01/08		.XXXX	±.0005

DRAWN M.D.P 09/17/90	
CHK M.D.P 09/17/90	
APPD	
SCALE	3=8
REF	
FMF	
PREV	

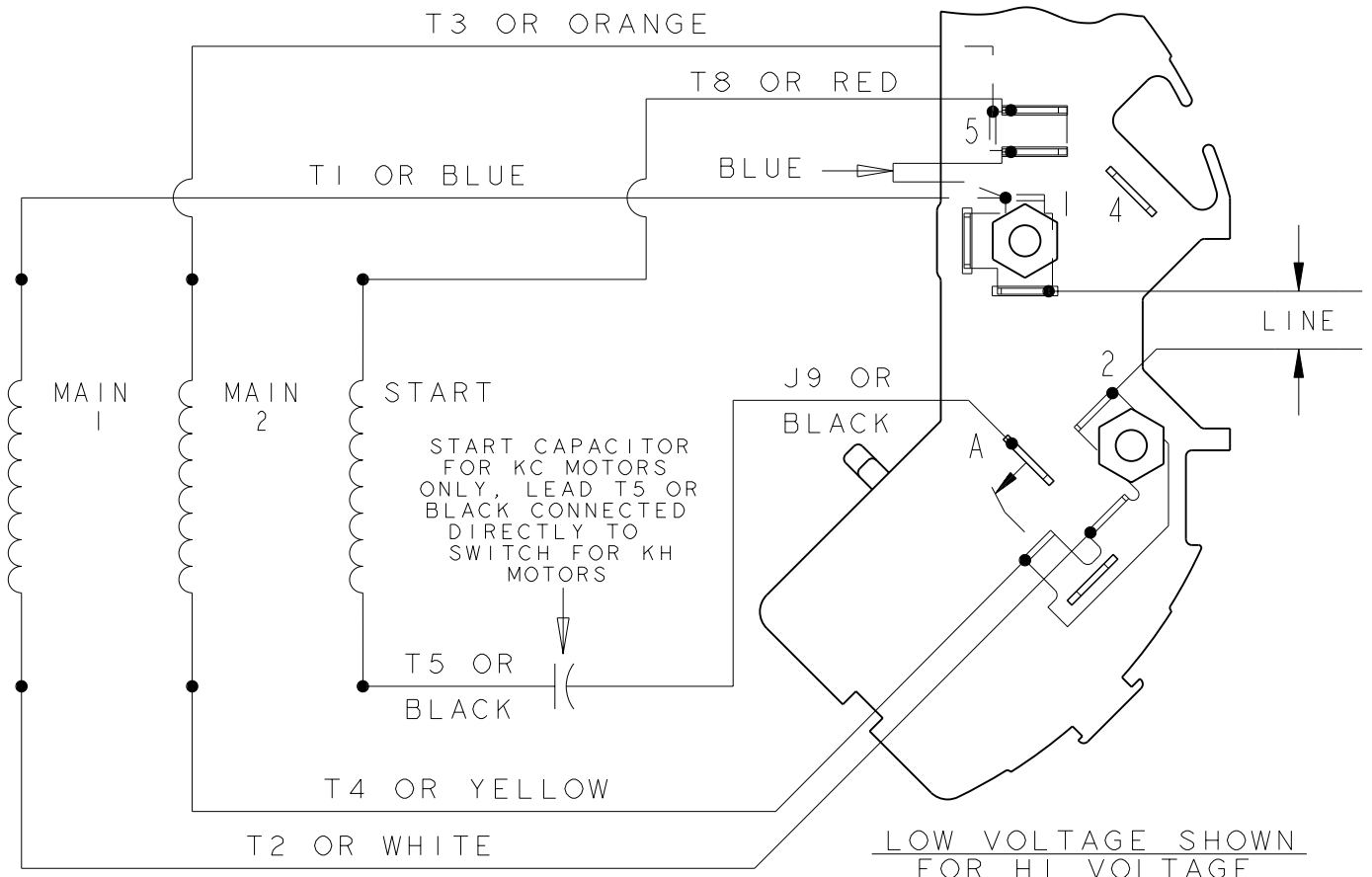
THIS DRAWING IN DESIGN AND DETAIL IS OUR PROPERTY AND MUST NOT BE USED EXCEPT IN CONNECTION WITH OUR WORK ALL RIGHTS OF DESIGN AND INVENTION ARE RESERVED THIS IS AN ELECTRONICALLY GENERATED DOCUMENT - DO NOT SCALE THIS PRINT

RFP	CAD FILE	52A107622	SIZE	DRAWING NO.	REV.
DIST	3 of 4		A	52A107622	14



SHEET —	THIRD ANGLE PROJECTION	REVISIONS			
		REV.	DESCRIPTION	DATE	APPROVED
REV <b>2</b>		2	UPDATED FORMAT	01/04/06	MAM

EITHER ROTATION - DUAL VOLTAGE  
TYPE KC OR KH



LOW VOLTAGE SHOWN  
FOR HI VOLTAGE  
SEE NOTE #1

- NOTE #1 - FOR HI VOLTAGE REMOVE BLUE FROM TERMINAL #5 AND PLACE ON TERMINAL #4, REMOVE WHITE (T2) FROM TERMINAL #2 AND PLACE ON TERMINAL #5.
- NOTE #2 - TO REVERSE ROTATION INTERCHANGE RED (T8) AND BLACK (J9-KC OR T5-KH) LEADS.
- NOTE #3 - WHEN MORE THAN ONE CAPACITOR IS USED CONNECT IN PARALLEL.

REF. DIAG. - 121A852	SWITCH (C) - 115D958AB
	CONNECTION LABEL - 52X332050

FOR ADDITIONAL INFO REFER TO: APPLIED PRACTICES DIMENSIONS ARE IN INCHES ✓ MATERIAL	SIGNATURES	DATE	<p><b>REGAL-BELOIT CORPORATION</b></p> <p>TITLE <b>CONNECTION DIAGRAM</b></p> <p>FMF: 30 FRAME SWITCH REDESIGN</p> <p>SIZE DRAWING A</p> <p>SCALE: 1.000 REF. No: .</p>
	MODEL M.D. PAPE	06/29/87	
	DETAIL	.	
	CHECKED	.	
	ENGRG	.	
MFG	.		
QUALITY	.		
ISSUED	M.D.P.	06/29/87	<p><b>52A105381AA</b></p> <p>REV <b>2</b></p>
SOLID MODEL: 52A105381AA			SHEET 1 of 1

