

# PRODUCT INFORMATION PACKET



Model No: 145THTR5376

Catalog No: Y537

Speed Ratio Motor, 1 HP, 3 Ph, 60 Hz, 230/460 V, 1200 RPM, 145TC Frame, TENV



Regal and LEESON are trademarks of Regal Rexnord Corporation or one of its affiliated companies.  
©2025 Regal Rexnord Corporation, All Rights Reserved. MC017097E





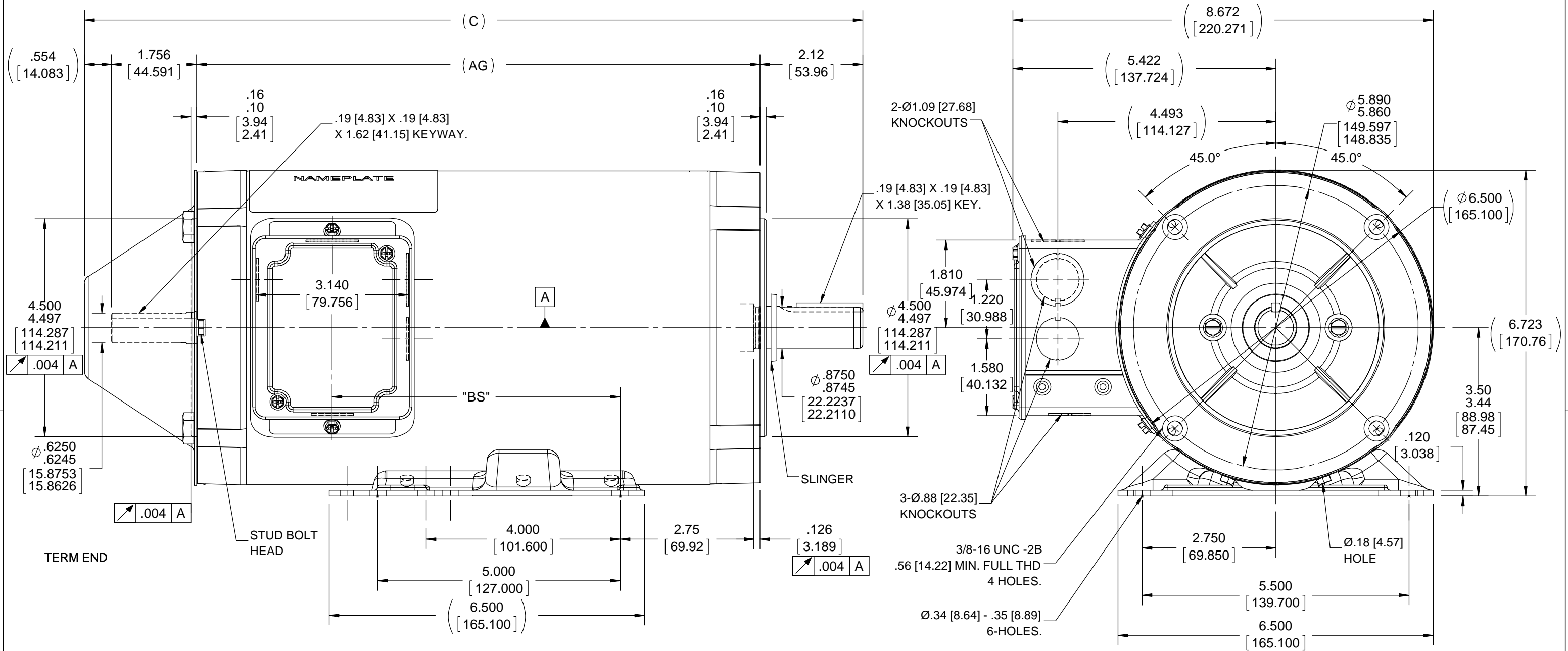
### Nameplate Specifications

|                        |                   |                            |  |
|------------------------|-------------------|----------------------------|--|
| Phase                  | <b>3</b>          | Output HP                  | <b>1 Hp</b>                            |
| Output KW              | <b>0.75 kW</b>    | Voltage                    | <b>230/460 V</b>                       |
| Speed                  | <b>1145 rpm</b>   | Service Factor             | <b>1.0</b>                             |
| Frame                  | <b>145TC</b>      | Enclosure                  | <b>Totally Enclosed Non Ventilated</b> |
| Thermal Protection     | <b>Thermostat</b> | Efficiency                 | <b>80 %</b>                            |
| Ambient Temperature    | <b>40 °C</b>      | Frequency                  | <b>60 Hz</b>                           |
| Current                | <b>3.8/1.9 A</b>  | Power Factor               | <b>62.5</b>                            |
| Duty                   | <b>Continuous</b> | Insulation Class           | <b>F</b>                               |
| Design Code            | <b>INV</b>        | KVA Code                   | <b>K</b>                               |
| Drive End Bearing Size | <b>6205</b>       | Opp Drive End Bearing Size | <b>6203</b>                            |
| UL                     | <b>Recognized</b> | CSA                        | <b>Y</b>                               |
| CE                     | <b>Y</b>          | IP Code                    | <b>43</b>                              |
| Number of Speeds       | <b>1</b>          |                            |  |

### Technical Specifications

|                       |                                    |                       |                      |
|-----------------------|------------------------------------|-----------------------|----------------------|
| Electrical Type       | <b>Squirrel Cage Inverter Duty</b> | Starting Method       | <b>Inverter Only</b> |
| Poles                 | <b>6</b>                           | Rotation              | <b>Reversible</b>    |
| Resistance Main       | <b>16.2 Ohms</b>                   | Mounting              | <b>Bolt-on Base</b>  |
| Motor Orientation     | <b>Horizontal</b>                  | Drive End Bearing     | <b>Ball</b>          |
| Opp Drive End Bearing | <b>Ball</b>                        | Frame Material        | <b>Rolled Steel</b>  |
| Shaft Type            | <b>T</b>                           | Overall Length        | <b>16.04 in</b>      |
| Frame Length          | <b>9.56 in</b>                     | Shaft Diameter        | <b>0.875 in</b>      |
| Shaft Extension       | <b>2.12 in</b>                     | Assembly/Box Mounting | <b>F1 ONLY</b>       |
| Inverter Load         | <b>CONSTANT 1000:1</b>             |                       |                      |
| Connection Drawing    | <b>EE7308T</b>                     | Outline Drawing       | <b>104059-956</b>    |



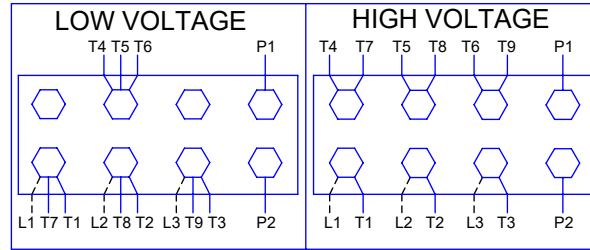
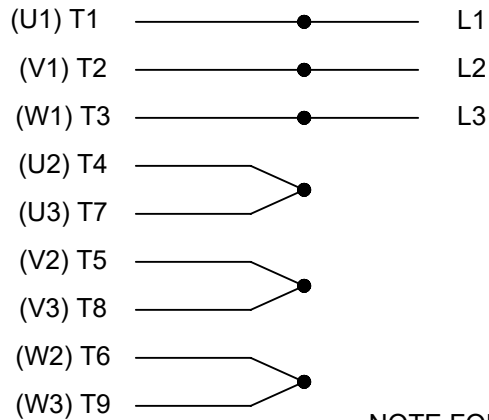


- NOTE:-**
- 1) CONDUIT BOX CAN BE ROTATED 180°
  - 2) REMOVABLE BASE.
  - 3) NAMEPLATE TO BE READ FROM CONDUIT BOX SIDE OF MOTOR.

| DASH | "C"            | "AG"           | "BS"          |
|------|----------------|----------------|---------------|
| 656  | 13.04 [331.22] | 8.61 [218.69]  | 2.94 [74.68]  |
| 706  | 13.54 [343.92] | 9.11 [231.39]  | 3.44 [87.38]  |
| 756  | 14.04 [356.62] | 9.61 [244.09]  | 3.94 [100.08] |
| 806  | 14.54 [369.32] | 10.11 [256.79] | 4.44 [112.78] |
| 856  | 15.04 [391.12] | 10.61 [269.19] | 4.94 [125.48] |
| 906  | 15.54 [394.72] | 11.11 [282.19] | 5.44 [138.18] |
| 956  | 16.04 [407.42] | 11.61 [294.89] | 5.94 [150.88] |

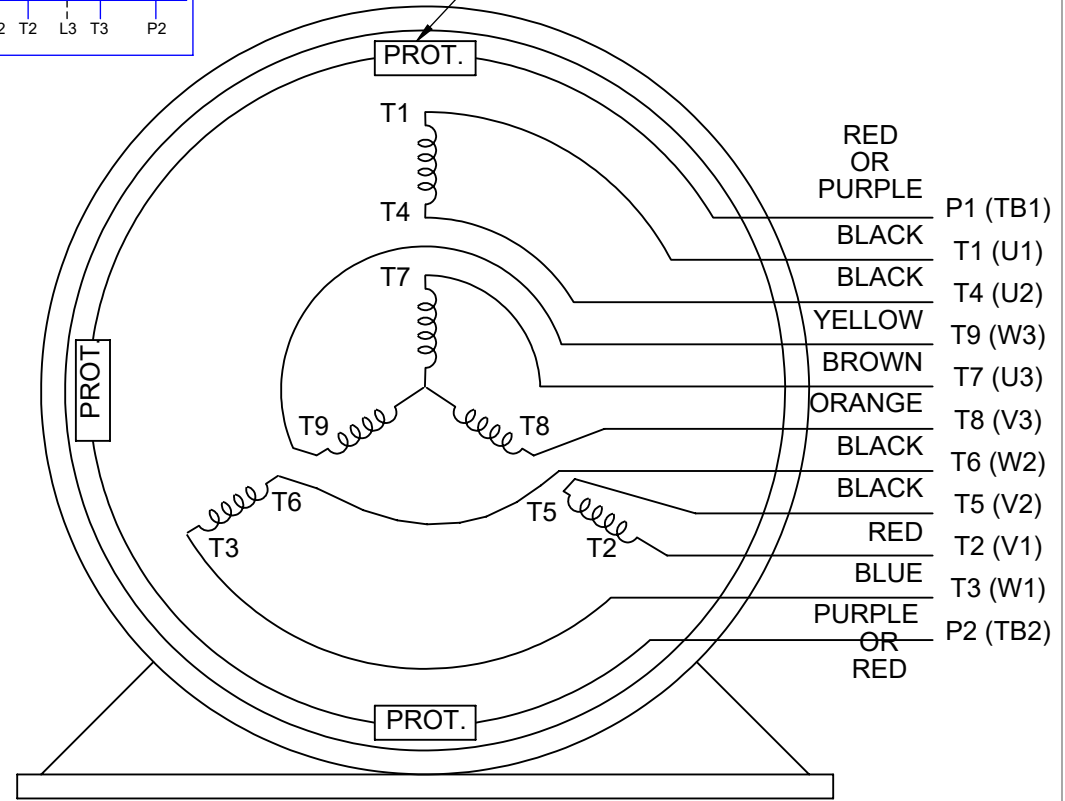
|   |                             |                    |  |                        |   |
|---|-----------------------------|--------------------|--|------------------------|---|
| DRAWING REVISION<br>H   | REVISION BY<br>A SUPPANAVAR | DATE<br>08-22-2018 | TOLERANCES UNLESS OTHERWISE SPECIFIED:<br>DEC. INCH mm ANGLE<br>.X ±0.1 [±2.5] ±7° 30"<br>.XX ±0.03 [±0.76]<br>.XXX ±0.005 [±0.127]<br>.XXXX ±0.0005 [±0.0127] | DRAWN BY<br>DT         | <b>REGAL</b> ™ Regal Beloit America, Inc.                     |
| ECO<br>ECO-0152983  | APPROVED BY<br>JD           | DATE<br>09/19/2018 |  | DATE<br>10-20-1995     |   |
| ECO DESCRIPTION<br><b>OUTLINE CONVERSION PROJECT</b><br>COPYRIGHT REGAL BELOIT AMERICA, INC. ALL RIGHTS RESERVED.<br>PROPRIETARY AND CONFIDENTIAL INFORMATION - THIS DOCUMENT IS THE PROPERTY OF REGAL BELOIT AMERICA, INC. ("OWNER") AND CONTAINS OWNER'S PROPRIETARY INFORMATION. ANY PERSON, CORPORATION OR OTHER FIRM RECEIVING IT IS DEEMED, BY RECEIVING IT, TO AGREE THAT IT, AND/OR ANY PART OF IT, SHALL NOT BE DISCLOSED TO ANY PERSON, CORPORATION OR OTHER ENTITY, DUPLICATED, AND/OR USED, EXCEPT AS EXPRESSLY APPROVED IN WRITING IN ADVANCE BY OWNER. THIS DOCUMENT SHALL BE RETURNED TO OWNER UPON REQUEST. IT MAY BE SUBJECT TO CERTAIN RESTRICTIONS UNDER APPLICABLE EXPORT CONTROL LAWS AND REGULATIONS. |                             |                    | REMOVE BURRS & BREAK SHARP EDGES: .003/.015 [0.076/.381] X 45°<br>CORNER FILLETS: R.02 [51]<br>MACHINED SURFACES: 200 INCH/mm 5.1                              | APPROVED BY<br>EAB     | DESCRIPTION<br><b>OUTLINE</b><br>140T FR.-BB-TENV-C" FACE -3Ø |
|   |                             |                    |  | DATE<br>10-31-1995     | MATERIAL  |
|   |                             |                    |  | REFERENCE<br>104059    | PROCESS/FINISH  |
|   |                             |                    |  | THIRD ANGLE PROJECTION | SIZE<br>B   |
|   |                             |                    |  |                        | DRAWING NUMBER<br><b>104059</b>                               |
|   |                             |                    |  |                        | SHEET<br>1 OF 1   |

**HIGH VOLTAGE**



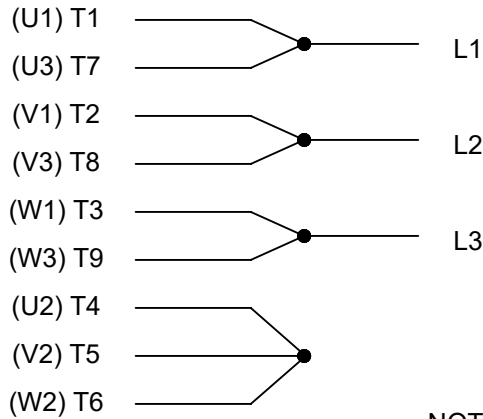
**THREE PHASE  
DUAL VOLTAGE MOTOR**

THERMO-PROTECTORS  
CONNECTED IN SERIES



NOTE FOR FACTORY USE ONLY:  
TO SURGE TEST FOR COMMON CONNECT:  
HIGH VOLT: CONNECT P1 TO T1  
THEN P2 TO L1  
LOW VOLT: CONNECT P1 TO T1 & T7,  
THEN P2 TO L1

**LOW VOLTAGE**



**VIEW OF TERMINAL END**

NOTE: LEAD'S COLOR CAN BE YELLOW OR WHITE FOR MT2 PLANT

|   |                   |                    |                            |                    |   |
|---|-------------------|--------------------|----------------------------|--------------------|---|
| DRAWING REVISION<br>T   | REVISION BY<br>ZR | DATE<br>01-14-2019 |                            | DRAWN BY<br>SMC    | Regal Beloit America, Inc.  |
| ECO<br>ECO-0159915  | APPROVED BY<br>DR | DATE<br>01-15-2019 |                            | DATE<br>05-13-1992 |   |
| ECO DESCRIPTION<br><b>ADDED TERMINAL CONNECTION DIAGRAM</b>   |                   |                    |                            | APPROVED BY<br>TB  | DESCRIPTION<br><b>CONN DIAGRAM-INTERNAL</b><br>3 PHASE - DUAL VOLTAGE MOTOR |
| <small>COPYRIGHT REGAL BELOIT AMERICA, INC. ALL RIGHTS RESERVED.<br/>PROPRIETARY AND CONFIDENTIAL INFORMATION - THIS DOCUMENT IS THE PROPERTY OF<br/>REGAL BELOIT AMERICA, INC. ("OWNER") AND CONTAINS OWNER'S PROPRIETARY<br/>INFORMATION. ANY PERSON, CORPORATION OR OTHER FIRM RECEIVING IT IS DEEMED,<br/>BY RECEIVING IT, TO AGREE THAT IT, AND/OR ANY PART OF IT, SHALL NOT BE DISCLOSED<br/>TO ANY PERSON, CORPORATION OR OTHER ENTITY, DUPLICATED, AND/OR USED, EXCEPT<br/>AS EXPRESSLY APPROVED IN WRITING IN ADVANCE BY OWNER. THIS DOCUMENT SHALL<br/>BE RETURNED TO OWNER UPON REQUEST. IT MAY BE SUBJECT TO CERTAIN<br/>RESTRICTIONS UNDER APPLICABLE EXPORT CONTROL LAWS AND REGULATIONS.</small> |                   |                    |                            | DATE<br>05-13-1992 | MATERIAL  |
|   |                   |                    | REFERENCE<br>EE7308/EE7300 | SIZE<br>A          | DRAWING NUMBER<br>EE7308T   |

CERTIFICATION DATA SHEET

Model#: 145THTR5376 BA WINDING#: ZT695 NONE 3  
 CONN. DIAGRAM: A-EE7308T ASSEMBLY: F1 ONLY  
 OUTLINE: A-104059-956

TYPICAL MOTOR PERFORMANCE DATA

| HP | KW  | SYNC. RPM | F.L. RPM | FRAME | ENCLOSURE | KVA CODE | DESIGN |
|----|-----|-----------|----------|-------|-----------|----------|--------|
| 1  | .75 | 1200      | 1145     | 145TC | TENV      | K        | INV    |

| PH | Hz | VOLTS   | FL AMPS | START TYPE    | DUTY       | INSL | S.F | AMB°C | ELEVATION |
|----|----|---------|---------|---------------|------------|------|-----|-------|-----------|
| 3  | 60 | 230/460 | 3.8/1.9 | INVERTER ONLY | CONTINUOUS | F3   | 1.0 | 40    | 3300      |

| FULL LOAD EFF: 80  | 3/4 LOAD EFF: 78.5 | 1/2 LOAD EFF: 75.5 | GTD. EFF | ELEC. TYPE       | NO LOAD AMPS |
|--------------------|--------------------|--------------------|----------|------------------|--------------|
| FULL LOAD PF: 62.5 | 3/4 LOAD PF: 53.5  | 1/2 LOAD PF: 41    | 77       | SQ CAGE INV DUTY | 2.6 / 1.3    |

| F.L. TORQUE | LOCKED ROTOR AMPS | L.R. TORQUE    | B.D. TORQUE  | F.L. RISE°C |
|-------------|-------------------|----------------|--------------|-------------|
| 4.6 LB-FT   | 21.4 / 10.7       | 12.2 LB-FT 265 | 16 LB-FT 348 | 95          |

| SOUND PRESSURE @ 3 FT. | SOUND POWER | ROTOR WK^2   | MAX. WK^2 | SAFE STALL TIME | STARTS /HOUR | APPROX. MOTOR WGT |
|------------------------|-------------|--------------|-----------|-----------------|--------------|-------------------|
| 60 dBA                 | 70 dBA      | 0.14 LB-FT^2 | 0 LB-FT^2 | 0 SEC.          | 0            | 49 LBS.           |

EQUIVALENT WYE CKT.PARAMETERS (OHMS PER PHASE)

| R1       | R2     | X1       | X2      | XM       |
|----------|--------|----------|---------|----------|
| 10.30194 | 8.3721 | 13.79268 | 15.3252 | 193.8354 |

| RM      | ZREF  | XR  | TD     | TD0   |
|---------|-------|-----|--------|-------|
| 12061.5 | 283.8 | 1.9 | 0.0063 | 0.067 |

\*\*\* SUPPLEMENTAL INFORMATION \*\*\*

| DE BRACKET TYPE | ODE BRACKET TYPE | MOUNT TYPE | ORIENTATION | SEVERE DUTY | HAZARDOUS LOCATION | DRIP COVER | SCREENS | PAINT          |
|-----------------|------------------|------------|-------------|-------------|--------------------|------------|---------|----------------|
| C-FACE          | BRAKE OR ENCODER | BOLT-ON    | HORIZONTAL  | FALSE       | NONE               | FALSE      | NONE    | BLACK (POWDER) |

| BEARINGS |      | GREASE     | SHAFT TYPE | SPECIAL DE | SPECIAL ODE | SHAFT MATERIAL           | FRAME MATERIAL |
|----------|------|------------|------------|------------|-------------|--------------------------|----------------|
| DE       | OPE  | POLYREX EM | T          | NONE       | NONE        | 1144 STRESSPROOF (C-223) | ROLLED STEEL   |
| BALL     | BALL |            |            |            |             |                          |                |
| 6205     | 6203 |            |            |            |             |                          |                |

| THERMO-PROTECTORS |            |          |          | THERMISTORS | CONTROL | SPACE /n HEATERS |
|-------------------|------------|----------|----------|-------------|---------|------------------|
| THERMOSTATS       | PROTECTORS | WDG RTDs | BRG RTDs | NONE        | FALSE   | NONE VOLTS       |
| TSTATS (N/C)      | NOT        | NONE     | NONE     |             |         |                  |

If Inverter equals NONE, contact factory for further information

|                                       |
|---------------------------------------|
| INVERTER TORQUE: CONSTANT 1000:1      |
| INV. HP SPEED RANGE: 2.0 X BASE SPEED |
| ENCODER: PROVISIONS ONLY              |
| NONE NONE                             |
| NONE NONE PPR                         |
| BRAKE: PROVISIONS ONLY NONE           |

\*  
N  
O  
T  
E  
S  
\*

|            |      |        |         |
|------------|------|--------|---------|
| NONE       | P/N  | NONE   |         |
| NONE       | NONE |        |         |
| NONE FT-LB |      | NONE V | NONE Hz |

DATE: 06/23/2017 02:08:00 AM  
FORM 3531 REV.3 02/07/99  
\*\* Subject to change without notice.

Data Sheet

Date: 6/16/2017

145THR5376

Customer: \_\_\_\_\_



Attention: \_\_\_\_\_

**Submittal**

Submitted by: EARL BABBITTS

Data @ 460 V

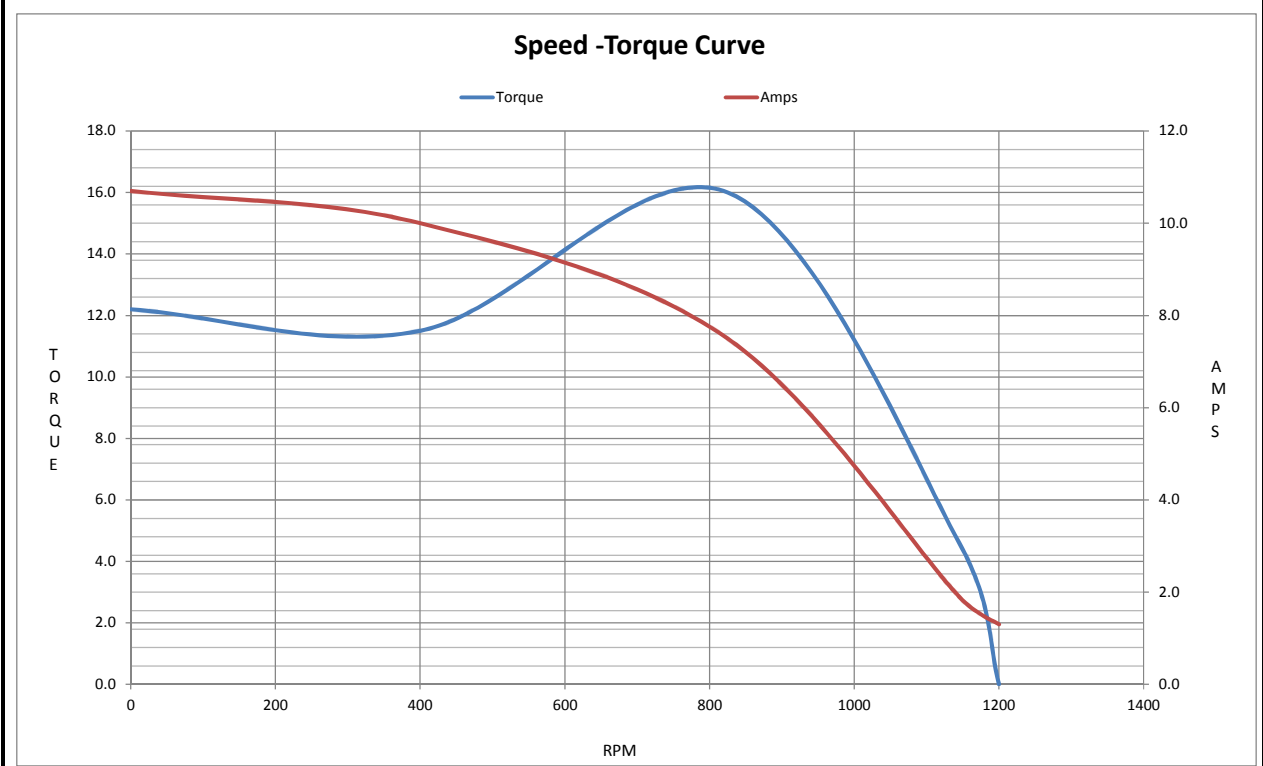
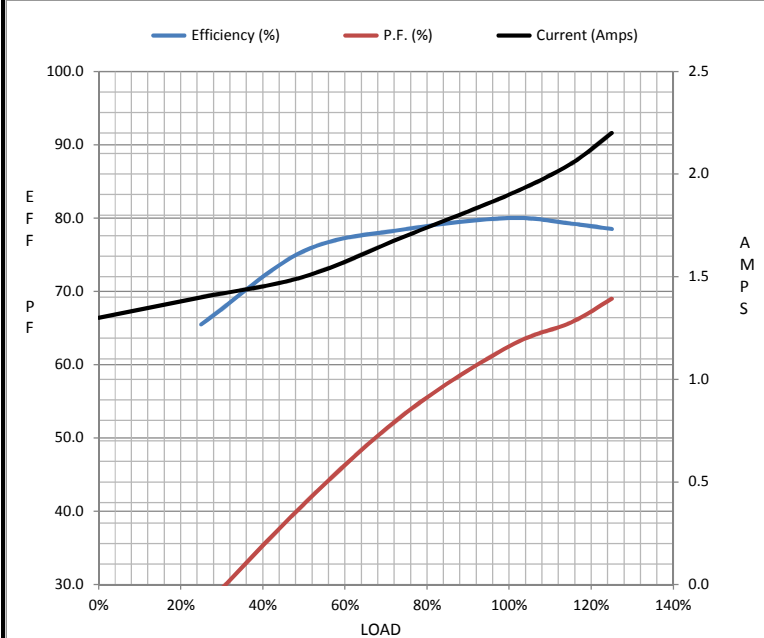
Motor Load Data

| Load           | 0%   | 25%  | 50%  | 75%  | 100% | 115%  | 125% | LR   |  |
|----------------|------|------|------|------|------|-------|------|------|--|
| Current (Amps) | 1.30 | 1.40 | 1.50 | 1.70 | 1.90 | 2.05  | 2.20 | 10.7 |  |
| Torque (ft-lb) | 0.00 | 1.10 | 2.20 | 3.4  | 4.6  | 5.2   | 5.8  | 12.2 |  |
| RPM            | 1200 | 1188 | 1175 | 1160 | 1145 | 1,138 | 1128 | 0    |  |
| Efficiency (%) |      | 65.5 | 75.5 | 78.5 | 80.0 | 79.3  | 78.5 |      |  |
| P.F. (%)       | 8.5  | 26.5 | 41.0 | 53.5 | 62.5 | 65.8  | 69.0 | 61.0 |  |

Motor Speed Data

|                | LR   | Pull-Up | BD   | Rated | Idle |
|----------------|------|---------|------|-------|------|
| Speed (RPM)    | 0    | 400     | 825  | 1145  | 1200 |
| Current (Amps) | 10.7 | 10.0    | 7.5  | 1.90  | 1.30 |
| Torque (ft-lb) | 12.2 | 11.5    | 16.0 | 4.6   | 0.00 |

| Information Block           |                         |         |         |          |
|-----------------------------|-------------------------|---------|---------|----------|
| HP                          | 1.0                     |         |         |          |
| Sync. RPM                   | 1200                    |         |         |          |
| Frame                       | 145                     |         |         |          |
| Enclosure                   | TENV                    |         |         |          |
| Construction                | TTR                     |         |         |          |
| Voltage                     | 230/460 V               |         |         |          |
| Frequency                   | 60 Hz                   |         |         |          |
| Design                      | B                       |         |         |          |
| LR Code letter              | K                       |         |         |          |
| Service Factor              | 1.0                     |         |         |          |
| Temp Rise @ FL              | 95 ° C                  |         |         |          |
| Duty                        | CONT                    |         |         |          |
| Ambient                     | 40 ° C                  |         |         |          |
| Elevation                   | 1,000 feet              |         |         |          |
| Rotor/Shaft wk <sup>2</sup> | 0.14 Lb-Ft <sup>2</sup> |         |         |          |
| Ref Wdg                     | ZT695 NONE              |         |         |          |
| Sound Pressure @ 1M         | 60 dBA                  |         |         |          |
| VFD Rating                  | CONSTANT 1000:1         |         |         |          |
| Outline Dwg                 | A-104059-956            |         |         |          |
| Conn. Diag                  | A-EE7308T               |         |         |          |
| Additional Specifications:  |                         |         |         |          |
| 0                           |                         |         |         |          |
| 0                           |                         |         |         |          |
| EQUIV CKT (OHMS / PHASE)    |                         |         |         |          |
| R1                          | R2                      | X1      | X2      | Xm       |
| 10.3020                     | 8.3720                  | 13.7930 | 15.3250 | 193.8350 |



REV. NOTE : UPDATED FROM MARATHON TO RRX LOGO

## EC Declaration of Conformity

The undersigned representing  
the manufacturer:

Regal Beloit America  
1946 West Cook Road  
Fort Wayne, IN 46818

and the authorized representative  
established within the Community:

Regal Beloit Italy  
Via Modena, 18  
24040 Ciserano(BG) - Italy

are committed to providing customers with products that comply with applicable regulations and international protocols to which they are subject, including the requirements of the European Parliament Directive on the Harmonization of the laws relating to electrical equipment designed for use within certain voltage limits (2014/35/EU).

Regal Beloit America declares that the following product(s), to which this declaration relates, are in conformity with the relevant sections of the EC standards listed below.

This statement supersedes any statements previously issued pertaining to the product(s) listed below and is subject to change without notice.

Model No : 145THTR5376

(Model No. may contain prefix and/or suffix characters)

Catalog No : Y537

Rework No : N/A

Directives :

Low Voltage Directive 2014/35/EU

Harmonized Standards Used :

EN 60034-1: 2010 (IEC 60034-1: 2010)

EN 60034-5: 2001/A1:2007 (IEC 60034-5: 2000/A1:2006)

Authorized Representative:



Zach Stauffer  
Vice President, Engineering

Authorized Representative in the Community:



Stefano Casiraghi  
Technology Director, Engineering

Created on 07/08/2025

**CE 25**