

PRODUCT INFORMATION PACKET



Model No: 143C17DRR40001A1

Catalog No: C188A

General Purpose Motor, 1 HP, 1 Ph, 60 Hz, 115/230 V, 1800 RPM, 143T Frame, DP

Operational at 115/208-230 V @60HZ



Regal and LEESON are trademarks of Regal Rexnord Corporation or one of its affiliated companies.
©2025 Regal Rexnord Corporation, All Rights Reserved. MC017097E



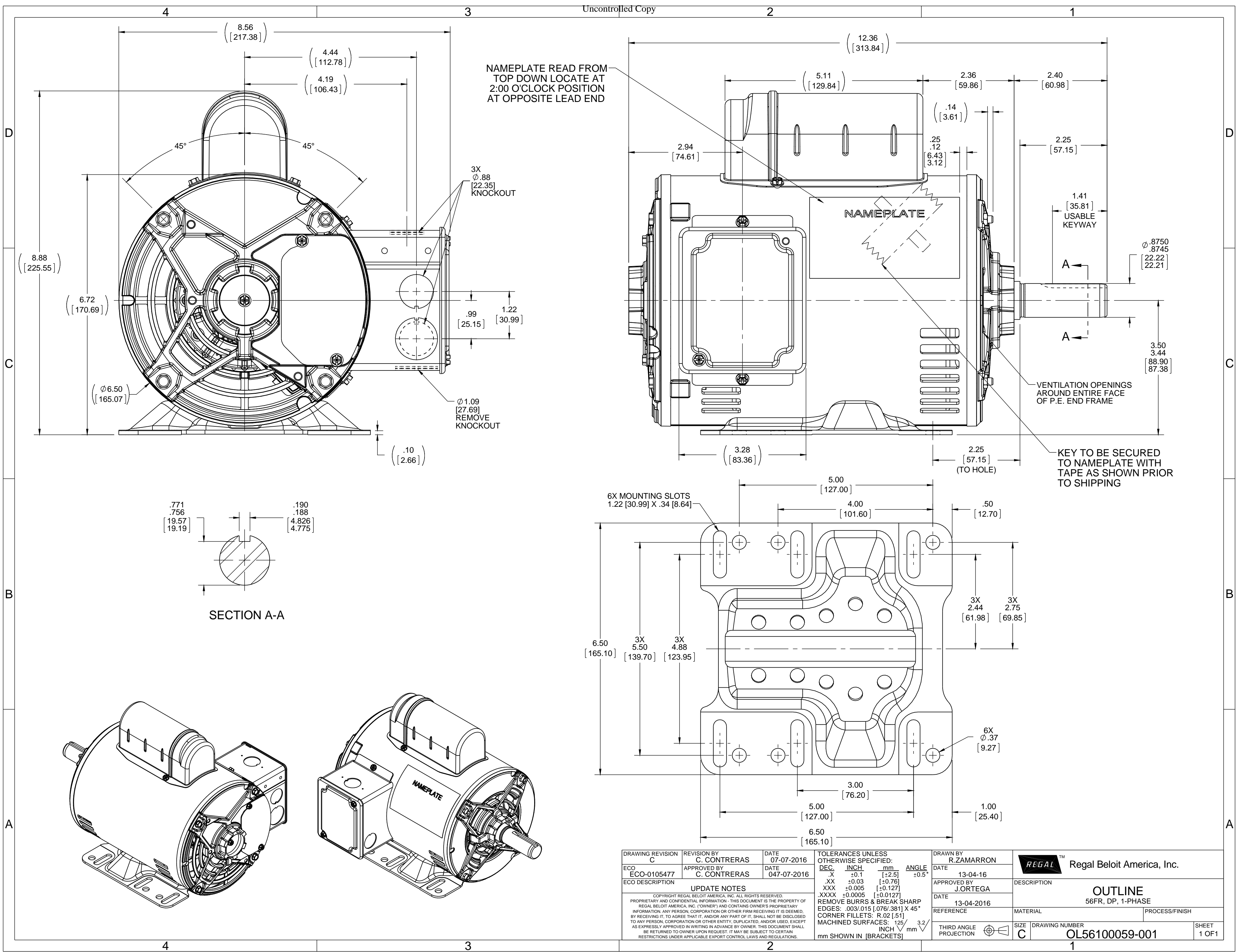


Nameplate Specifications

| | | | |
|------------------------|----------------|----------------------------|------------|
| Phase | 1 | Output HP | 1 Hp |
| Output KW | 0.75 kW | Voltage | 115/230 V |
| Speed | 1725 rpm | Service Factor | 1.15 |
| Frame | 143T | Enclosure | Drip Proof |
| Thermal Protection | No Protection | Efficiency | 72 % |
| Ambient Temperature | 40 °C | Frequency | 60 Hz |
| Current | 13.4/6.7 A | Power Factor | 67.8 |
| Duty | Continuous | Insulation Class | B |
| Design Code | NO DESIGN CODE | KVA Code | K |
| Drive End Bearing Size | 6205 | Opp Drive End Bearing Size | 6203 |
| UL | Recognized | CSA | Y |
| CE | Y | IP Code | 22 |
| Number of Speeds | 1 | | |

Technical Specifications

| | | | |
|-----------------------|-------------------------------|-----------------------|----------------------------|
| Electrical Type | Capacitor Start Induction Run | Starting Method | Across The Line |
| Poles | 4 | Rotation | Selective Counterclockwise |
| Resistance Main | 1.1 Ohms | Mounting | Rigid Base |
| Motor Orientation | Horizontal | Drive End Bearing | Ball |
| Opp Drive End Bearing | Ball | Frame Material | Rolled Steel |
| Shaft Type | T | Overall Length | 12.36 in |
| Frame Length | 7.65 in | Shaft Diameter | 0.875 in |
| Shaft Extension | 2.25 in | Assembly/Box Mounting | F1 ONLY |
| Outline Drawing | OL56100059-001 | Connection Drawing | CDCD104 |



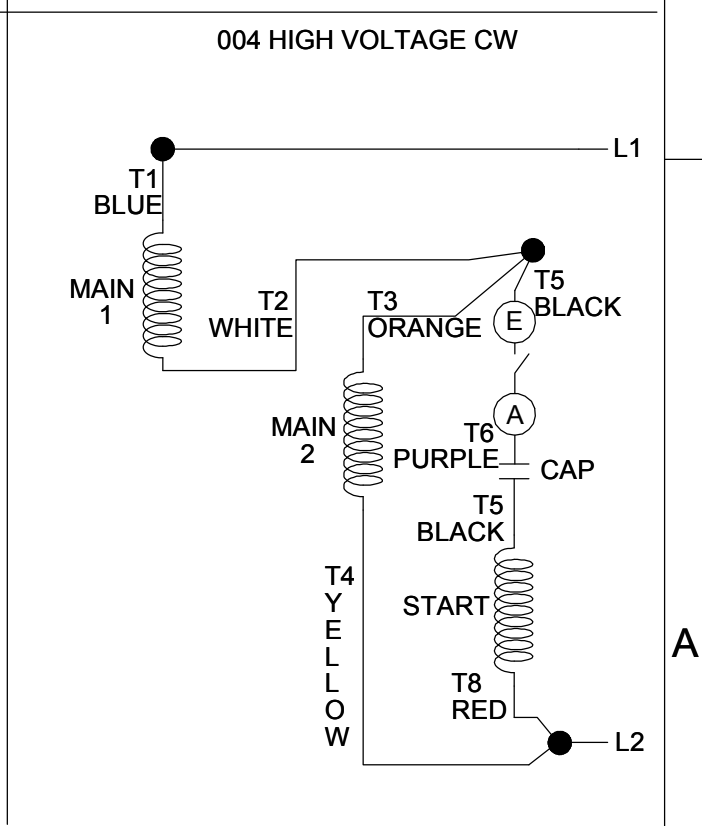
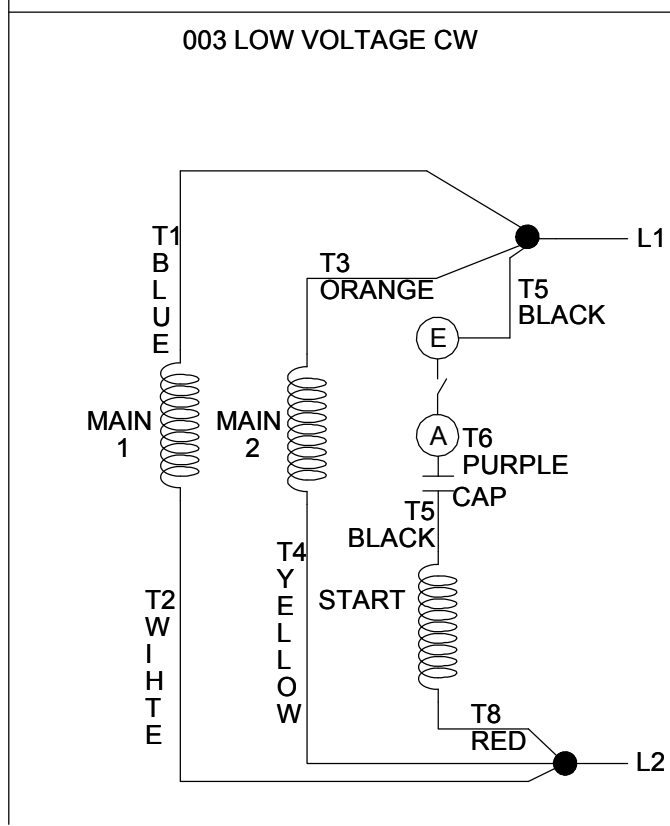
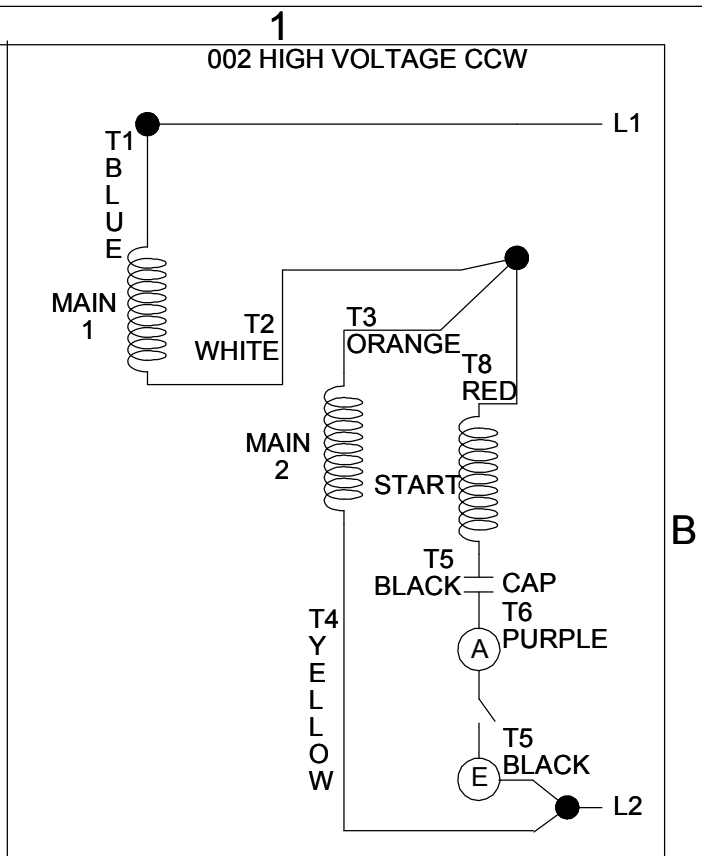
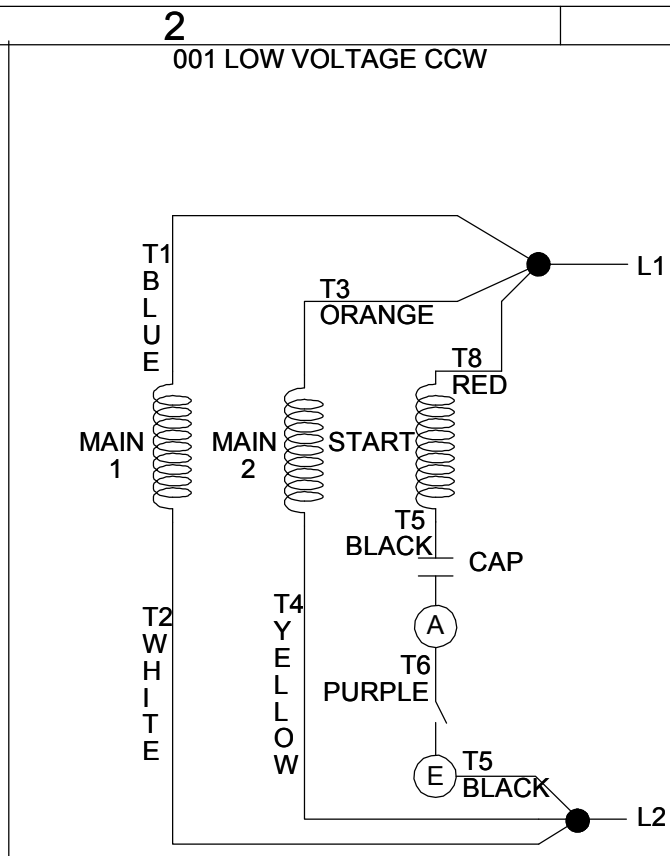
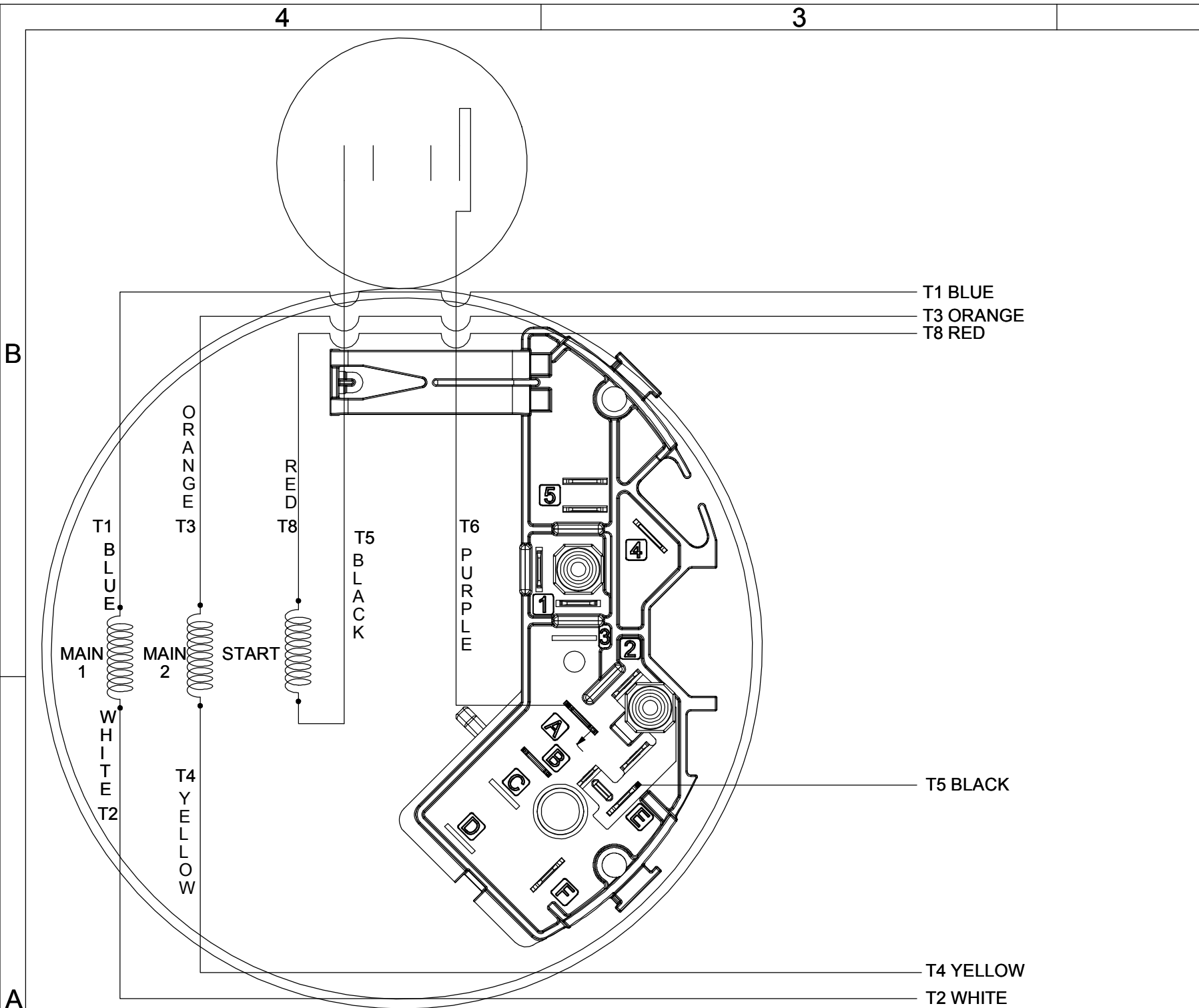
NAMEPLATE READ FROM TOP DOWN LOCATE AT 2:00 O'CLOCK POSITION AT OPPOSITE LEAD END

NAMEPLATE

KEY TO BE SECURED TO NAMEPLATE WITH TAPE AS SHOWN PRIOR TO SHIPPING

SECTION A-A

| | | | | | |
|--|-----------------------------|---------------------|---|-------------------------|---|
| DRAWING REVISION C | REVISION BY C. CONTRERAS | DATE 07-07-2016 | TOLERANCES UNLESS OTHERWISE SPECIFIED: DEC. INCH mm ANGLE | DRAWN BY R.ZAMARRON | REGAL™ Regal Beloit America, Inc. |
| ECO ECO-0105477 | APPROVED BY C. CONTRERAS | DATE 047-07-2016 | .X ±0.1 [±2.5] .XX ±0.03 [±0.76] .XXX ±0.005 [±0.127] .XXXX ±0.0005 [±0.0127] | DATE 13-04-16 | DESCRIPTION OUTLINE 56FR, DP, 1-PHASE |
| ECO DESCRIPTION UPDATE NOTES | | | REMOVE BURRS & BREAK SHARP EDGES: .003/.015 [0.076/.381] X 45° CORNER FILLETS: R.02 [51] MACHINED SURFACES: 125/INCH 3.2/mm | APPROVED BY J.ORTEGA | MATERIAL |
| COPYRIGHT REGAL BELOIT AMERICA, INC. ALL RIGHTS RESERVED. PROPRIETARY AND CONFIDENTIAL INFORMATION - THIS DOCUMENT IS THE PROPERTY OF REGAL BELOIT AMERICA, INC. ('OWNER') AND CONTAINS OWNER'S PROPRIETARY INFORMATION. ANY PERSON, CORPORATION OR OTHER FIRM RECEIVING IT IS DEEMED, BY RECEIVING IT, TO AGREE THAT IT, AND/OR ANY PART OF IT, SHALL NOT BE DISCLOSED TO ANY PERSON, CORPORATION OR OTHER ENTITY, DUPLICATED, AND/OR USED, EXCEPT AS EXPRESSLY APPROVED IN WRITING IN ADVANCE BY OWNER. THIS DOCUMENT SHALL BE RETURNED TO OWNER UPON REQUEST. IT MAY BE SUBJECT TO CERTAIN RESTRICTIONS UNDER APPLICABLE EXPORT CONTROL LAWS AND REGULATIONS. | | | mm SHOWN IN [BRACKETS] | DATE 13-04-2016 | PROCESS/FINISH |
| | | | | REFERENCE | DRAWING NUMBER OL56100059-001 |
| | | | | THIRD ANGLE PROJECTION | SHEET 1 OF 1 |



CCW ROTATION-CAP START IND RUN DUAL VOLTAGE

- NOTES:
- FOR CW ROTATION INTERCHANGE T5 (BLACK) AND T8 (RED) LEADS.
 - ENGINEERING REFERENCE TERMINAL BOARD ASSY 10003285-001-001
 - CONNECTION DIAGRAM-NAMEPLATE DD10029,001-T NO.S 002-COLORS WITH T NO'S, DD10029-003 CW ROTATION.
 - FOLLOW BOM FOR LEAD MARKING AND COLORS.

| | | |
|---|-------------------------|--------------------|
| DRAWING REVISION C | REVISION BY EV | DATE 05-13-2019 |
| ECO ECO-0166870 | APPROVED BY A.MORENO | DATE 05-13-2019 |
| ECO DESCRIPTION ADDED NOTE -003 | | |
| <small>COPYRIGHT REGAL BELOIT AMERICA, INC. ALL RIGHTS RESERVED. PROPRIETARY AND CONFIDENTIAL INFORMATION - THIS DOCUMENT IS THE PROPERTY OF REGAL BELOIT AMERICA, INC. ("OWNER") AND CONTAINS OWNER'S PROPRIETARY INFORMATION. ANY PERSON, CORPORATION OR OTHER FIRM RECEIVING IT IS DEEMED, BY RECEIVING IT, TO AGREE THAT IT, AND/OR ANY PART OF IT, SHALL NOT BE DISCLOSED TO ANY PERSON, CORPORATION OR OTHER ENTITY, DUPLICATED, AND/OR USED, EXCEPT AS EXPRESSLY APPROVED IN WRITING IN ADVANCE BY OWNER. THIS DOCUMENT SHALL BE RETURNED TO OWNER UPON REQUEST. IT MAY BE SUBJECT TO CERTAIN RESTRICTIONS UNDER APPLICABLE EXPORT CONTROL LAWS AND REGULATIONS.</small> | | |

TOLERANCES UNLESS OTHERWISE SPECIFIED:

| DEC. | INCH | mm | ANGLE |
|-------|---------|-----------|-------|
| X | ±0.1 | [±2.5] | ±0.5° |
| .XX | ±0.01 | [±0.25] | |
| .XXX | ±0.005 | [±0.127] | |
| .XXXX | ±0.0005 | [±0.0127] | |

REMOVE BURRS & BREAK SHARP EDGES: .003/.015 [.076/.381]
CORNER FILLETS: .02 [.51]
MACHINED SURFACES: 125 INCH / 3.2 mm

| | |
|----------------------------|------------------------|
| DRAWN BY G. RODRIGUEZ | DATE 04-14-2016 |
| APPROVED BY E. MARTINEZ | DATE 04-14-2016 |
| REFERENCE CDCD103 | THIRD ANGLE PROJECTION |

| | |
|--------------------------------------|---------------------------|
| Regal Beloit America, Inc. | |
| DESCRIPTION CONN DIAGRAM-EXTERNAL | |
| MATERIAL | PROCESS/FINISH |
| SIZE B | DRAWING NUMBER CDCD104 |
| SHEET 1 OF 1 | |

PREPARED BY: Bhargavi Dontham
DATE: 08/17/2018 01:58:28 AM
 FORM 3531 REV.3 02/07/99
 ** Subject to change without notice.



CERTIFICATION DATA SHEET

CUSTOMER:

CUSTOMER

PO#:

ORDER #:

MODEL #: 143C17DRR40001A1 A

CONN. DIAGRAM: CDCD104

CUSTOMER PART

#:

OUTLINE: OL56100059-001

MOUNTING: F1 ONLY

WINDING #: NC56417 3 A

TYPICAL MOTOR PERFORMANCE DATA

| HP | kW | SYNC. RPM | F.L. RPM | FRAME | ENCLOSURE | KVA CODE | DESIGN |
|----|------|-----------|----------|-------|-----------|----------|----------------|
| 1 | 0.75 | 1800 | 1725 | 143T | DP | K | NO DESIGN CODE |

| PH | Hz | VOLTS | AMPS | START TYPE | DUTY | INSL | S.F. | AMB°C |
|----|----|-------------|--------------|-----------------|------------|------|------|-------|
| 1 | 60 | 115/208-230 | 13.4/6.7-6.7 | ACROSS THE LINE | CONTINUOUS | B3 | 1.15 | 40 |

| FULL LOAD EFF: | 72 | 3/4 LOAD EFF: | 71.4 | 1/2 LOAD EFF: | 67 | GTD. EFF | ELEC. TYPE |
|----------------|------|---------------|------|---------------|------|----------|-------------------|
| FULL LOAD PF: | 67.8 | 3/4 LOAD PF: | 59.3 | 1/2 LOAD PF: | 47.5 | 68 | CAP START IND RUN |

| F.L. TORQUE | LOCKED ROTOR AMPS | L.R. TORQUE | B.D. TORQUE | F.L. RISE°C |
|-------------|-------------------|---------------------|---------------------|-------------|
| 3.012 LB-FT | 77.1 / 38.6 | 9.14 LB-FT 303.32 % | 7.58 LB-FT 251.76 % | 0 |

| SOUND PRESSURE @ 3 FT. | SOUND POWER | ROTOR WK^2 | MAX. WK^2 | SAFE STALL TIME | STARTS / HOUR | APPROX. MOTOR WGT |
|------------------------|-------------|------------|-----------|-----------------|---------------|-------------------|
| 0 dBA | 10 dBA | 0 LB-FT^2 | 0 LB-FT^2 | 0 SEC. | 0 | 0 LBS. |

***** SUPPLEMENTAL INFORMATION *****

| DE BRACKET TYPE | ODE BRACKET TYPE | MOUNT TYPE | ORIENTATION | SEVERE DUTY | HAZARDOUS LOCATION | DRIP COVER | SCREENS | PAINT |
|-----------------|------------------|------------|-------------|-------------|--------------------|------------|---------|---------------|
| STANDARD | STANDARD | RIGID | HORIZONTAL | FALSE | NONE | FALSE | NONE | GRAY (POWDER) |

| BEARINGS | | GREASE | SHAFT TYPE | SPECIAL DE | SPECIAL ODE | SHAFT MATERIAL | FRAME MATERIAL |
|----------|------|------------|------------|------------|-------------|--------------------------|----------------|
| DE | ODE | | | | | | |
| BALL | BALL | POLYREX EM | T | NONE | NONE | 1144 STRESSPROOF (C-223) | ROLLED STEEL |
| 6205 | 6203 | | | | | | |

| THERMO-PROTECTORS | | | | THERMISTORS | CONTROL | SPACE HEATERS |
|-------------------|------------|----------|----------|-------------|---------|---------------|
| THERMOSTATS | PROTECTORS | WDG RTDs | BRG RTDs | | | |
| NONE | NOT | NONE | NONE | NONE | FALSE | NONE VOLTS |

*
N
O
T
E

| |
|----------------------------------|
| INVERTER TORQUE: NONE |
| INV. HP SPEED RANGE: NONE |
| ENCODER: NONE |
| NONE NONE |
| NONE NONE PPR |
| BRAKE: NONE NONE |
| NONE P/N NONE |
| NONE NONE |

REGAL REXNORD CORPORATION

TYPICAL PERFORMANCE CURVE for AC MOTOR

Customer WW Grainger

Curve at 230

Volts

HP 1

PHASE 1

Model No 143C17DRR40001A1

60

HZ

VOLTS 115/208-230

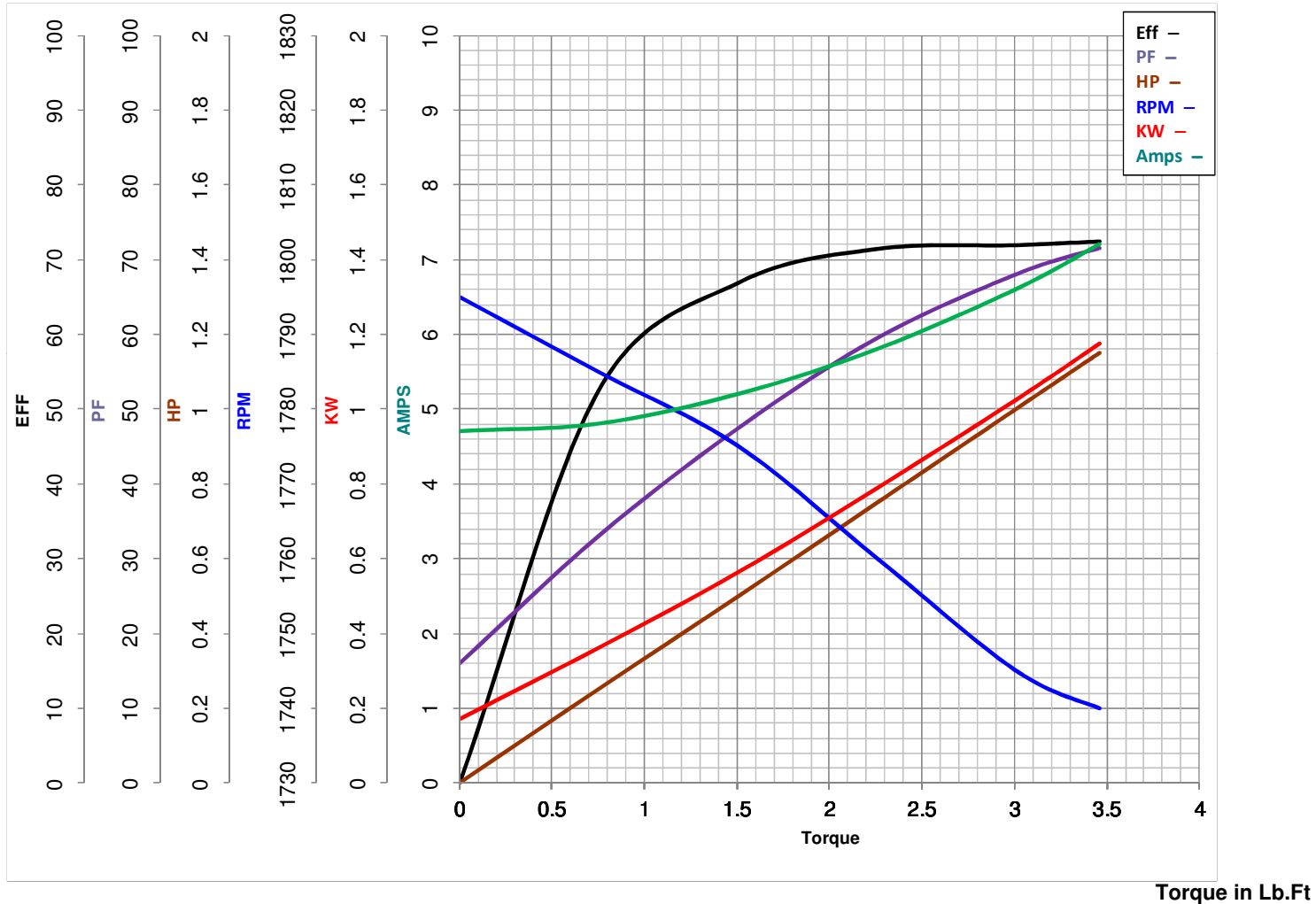
1

HP

Catalog No C188A

HZ 60

RPM 1725



| | | | | |
|------------------|------------------|--------------------|------------------|------------------------------|
| FL TORQUE | <u>3.01</u> | Lb.Ft | FL AMPS | <u>13.4/6.7-6.7</u> |
| BD TORQUE | <u>7.6</u> | Lb.Ft | PU TORQUE | <u>8.2</u> Lb.Ft |
| LR TORQUE | <u>9.14</u> | Lb.Ft | LR AMPS | <u>38.56</u> |
| WINDING | <u>NC56417-3</u> | Prepared By | <u>BHARGAVI</u> | Date <u>8/17/2018</u> |

EC Declaration of Conformity

The undersigned representing
the manufacturer:

Regal Beloit America
1946 West Cook Road
Fort Wayne, IN 46818

and the authorized representative
established within the Community:

Regal Beloit Italy
Via Modena, 18
24040 Ciserano(BG) - Italy

are committed to providing customers with products that comply with applicable regulations and international protocols to which they are subject, including the requirements of the European Parliament Directive on the Harmonization of the laws relating to electrical equipment designed for use within certain voltage limits (2014/35/EU).

Regal Beloit America declares that the following product(s), to which this declaration relates, are in conformity with the relevant sections of the EC standards listed below.

This statement supersedes any statements previously issued pertaining to the product(s) listed below and is subject to change without notice.

Model No : 143C17DRR40001A1

(Model No. may contain prefix and/or suffix characters)

Catalog No : C188A

Rework No : N/A

Directives :

Low Voltage Directive 2014/35/EU

Harmonized Standards Used :

EN 60034-1: 2010 (IEC 60034-1: 2010)

EN 60034-5: 2001/A1:2007 (IEC 60034-5: 2000/A1:2006)

Authorized Representative:



Zach Stauffer
Vice President, Engineering

Authorized Representative in the Community:



Stefano Casiraghi
Technology Director, Engineering

Created on 07/08/2025

CE 25