

PRODUCT INFORMATION PACKET



Model No: 056B17D5331

Catalog No: B352

Fan and Blower Motor, 2 HP, 1 Ph, 60 Hz, 115/208-230 V, 1800 RPM, 56H Frame, DP



Regal and LEESON are trademarks of Regal Rexnord Corporation or one of its affiliated companies.
©2025 Regal Rexnord Corporation, All Rights Reserved. MC017097E





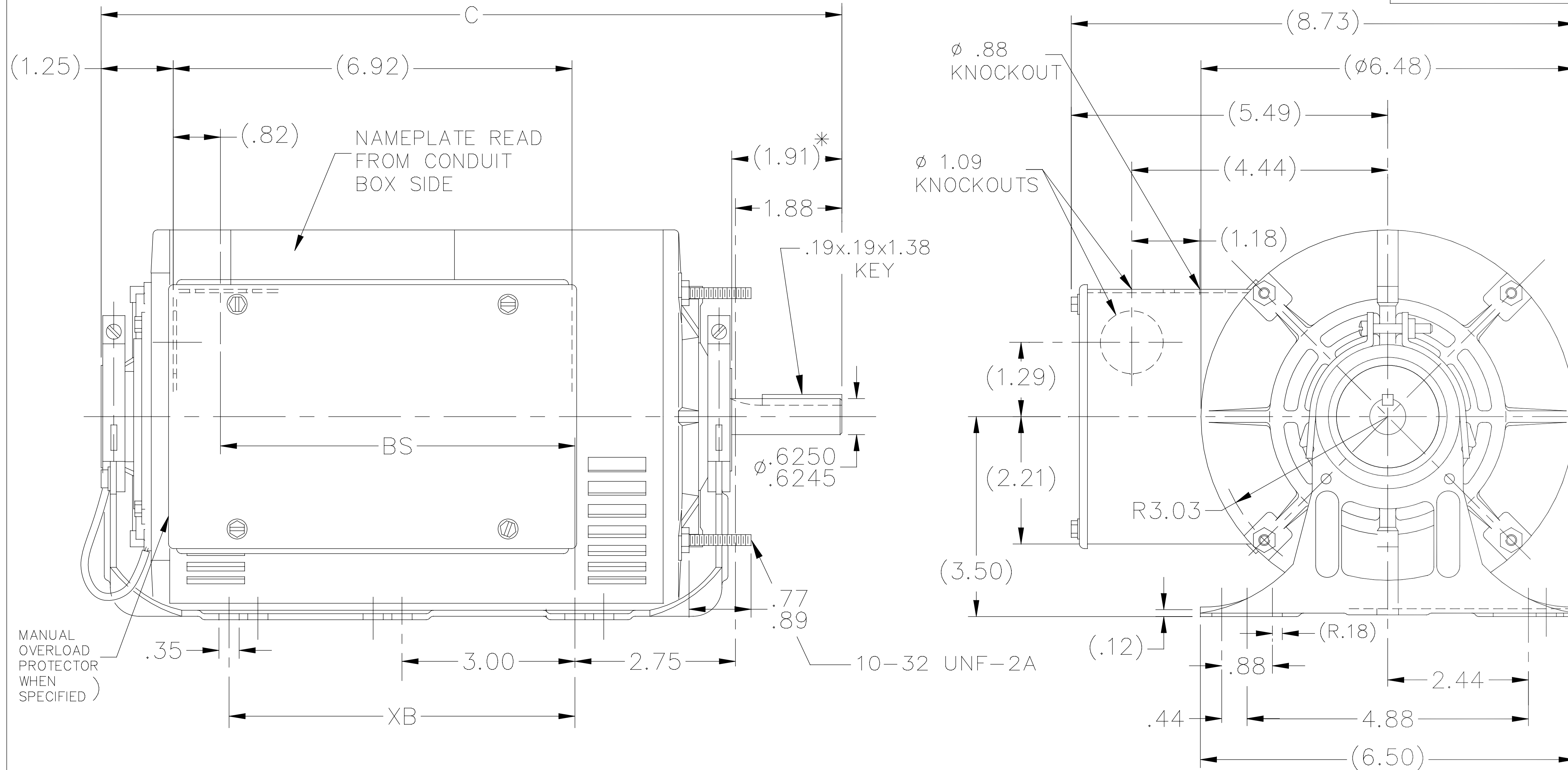
Nameplate Specifications

Phase	1	Output HP	2 Hp
Output KW	1.5 kW	Voltage	115/208-230 V
Speed	1725 rpm	Service Factor	1.15
Frame	56H	Enclosure	Drip Proof
Thermal Protection	Automatic	Efficiency	78.5 %
Ambient Temperature	40 °C	Frequency	60 Hz
Current	21.0/11.3-10.5 A	Power Factor	78.3
Duty	Continuous	Insulation Class	B
Design Code	N	KVA Code	J
Drive End Bearing Size	6205	Opp Drive End Bearing Size	6203
UL	Recognized	CSA	Y
CE	Y	IP Code	22
Number of Speeds	1		

Technical Specifications

Electrical Type	Capacitor Start Capacitor Run	Starting Method	Across The Line
Poles	4	Rotation	Selective Counterclockwise
Resistance Main	0 Ohms	Mounting	Resilient Base - Extended Studs
Motor Orientation	Horizontal	Drive End Bearing	Ball
Opp Drive End Bearing	Ball	Frame Material	Rolled Steel
Shaft Type	NEMA 56	Overall Length	13.85 in
Frame Length	9.56 in	Shaft Diameter	0.625 in
Shaft Extension	1.91 in	Assembly/Box Mounting	F1 ONLY
Outline Drawing	A-100765-956	Connection Drawing	102006-52

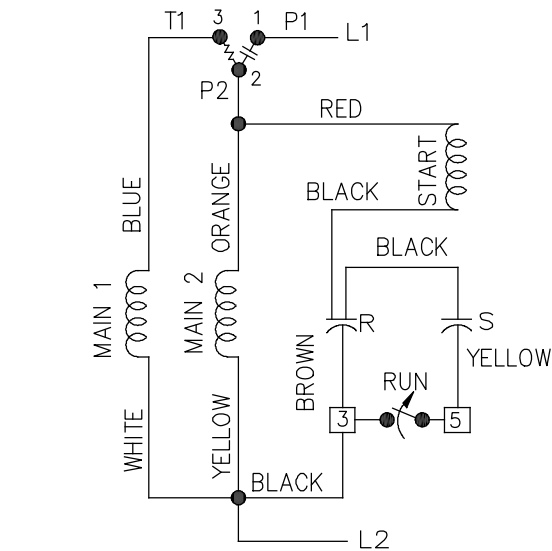
100765



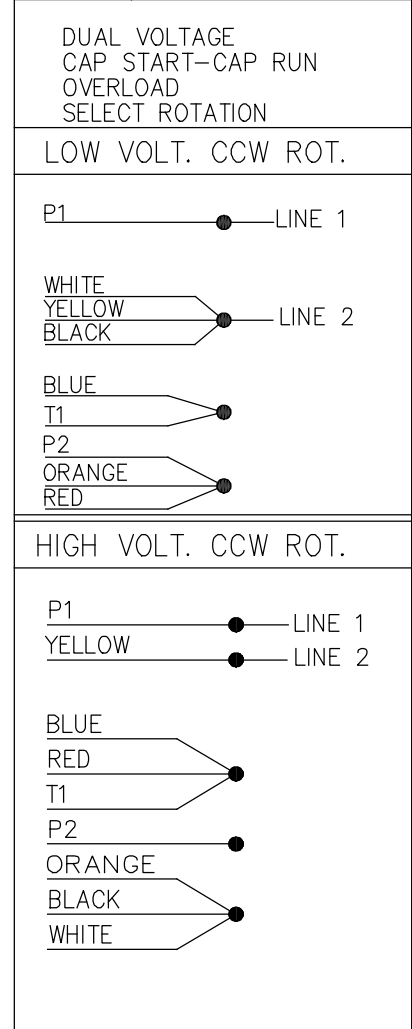
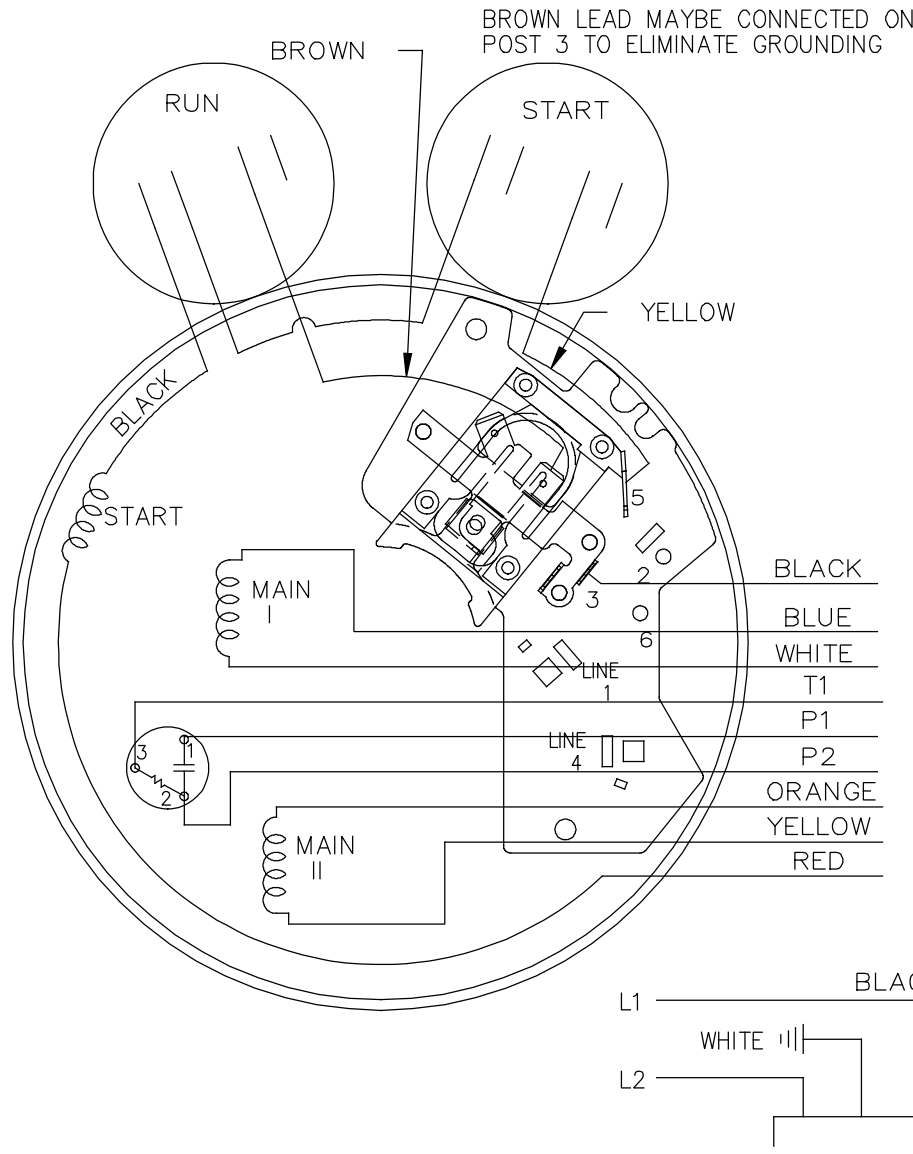
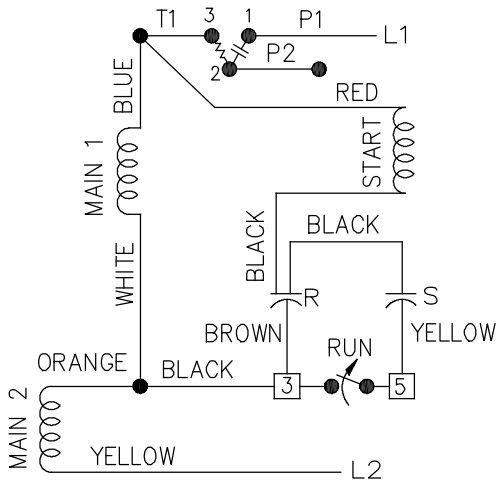
DASH	FRAME	C	BS	XB
756	56-75	11.85	5.18	5.00
856	"-85	12.85	6.18	5.00
956	"-95	13.85	7.18	5.00

NO.	REVISION	BY & DATE	CHK	TOLERANCES UNLESS SPECIFIED		REGAL™ Regal Beloit America, Inc.	DRAWN RM 06-16-1993			
				DEC.	INCHES					
5	REMOVED NOTE PER ECR-0091538	PST 08/21/15		DEC.	INCHES	TITLE OUTLINE 56 FR. - BB - DR.PR. - RESIL. BASE MAT'L. FINISH	CHK ML 06-16-1993			
4	UPDATED DRAWING	RJW 03-28-2007	.X	±.1	APPD RJS 06-18-1996					
3	REDRAWN IN AUTOCAD	TAT 09-01-2004	ML	.XX	±.03		SCALE 3=8			
2	ADDED NOTE CN 24378	PGK 06-11-1997		.XXX	±.005		REF			
1	NEW DRAWING 4034739	RM 06-18-1993		.XXXX	±.0005		FMF			
THIS DRAWING IN DESIGN AND DETAIL IS OUR PROPERTY AND MUST NOT BE USED EXCEPT IN CONNECTION WITH OUR WORK ALL RIGHTS OF DESIGN AND INVENTION ARE RESERVED THIS IS AN ELECTRONICALLY GENERATED DOCUMENT - DO NOT SCALE THIS PRINT							PREV			
RFP						CAD FILE 100765	SIZE A	DRAWING NO. 100765	PAGE OF	REV. 5
DIST WP										

LOW VOLTAGE C.C.W.



HIGH VOLTAGE C.C.W.



FOR CW ROT. EITHER VOLTAGE INTERCHANGE RED WITH BLACK LEAD.

14	UDATED LOGO TO REGAL	SN 01-09-2020		TOLERANCES UNLESS SPECIFIED		Regal Beloit America, Inc.	DRAWN ML 05-09-1992			
13	CHG'ED SWITCH TO OPEN WHEN RUNNING ISAAC 11-2715	KBB 06-23-2011	EH	DEC.	INCHES		CHK GK 05-09-1992			
12	REMOVE 1,2,3 & 4 ON LOW & HIGH VOLT CN 31436	TJB 02-14-2002	DRS	.X	±.1	APPD FG 05-09-1992				
11	REMOVE BRAKE VIEW CN 31436	TJB 01-30-2002	DRS	.XX	±.02	TITLE CONNECTION DIAGRAM	SCALE 5=8			
10	ADDED BROW LEAD DETAIL NOTE CN 24300-323	BJW 02-28-2000		.XXX	±.005		REF			
9	ADDED CORD VIEW MU20434	BLR 07-01-1998		.XXXX	±.0005	MAT'L.	FMF			
NO.	REVISION	BY & DATE	CHK	ANG	±7'30"	FINISH	PREV			
THIS DRAWING IN DESIGN AND DETAIL IS OUR PROPERTY AND MUST NOT BE USED EXCEPT IN CONNECTION WITH OUR WORK ALL RIGHTS OF DESIGN AND INVENTION ARE RESERVED THIS IS AN ELECTRONICALLY GENERATED DOCUMENT - DO NOT SCALE THIS PRINT			RFP	CAD FILE 102006-52			SIZE A	DRAWING NO. 102006-52	PAGE OF 14	REV. 14
			DIST	WP						

CERTIFICATION DATA SHEET

Model#: 56B17D5331 H WINDING#: ZB407 NONE 3
 CONN. DIAGRAM: 102006-52 ASSEMBLY: F1 ONLY
 OUTLINE: A-100765-956

TYPICAL MOTOR PERFORMANCE DATA

HP	KW	SYNC. RPM	F.L. RPM	FRAME	ENCLOSURE	KVA CODE	DESIGN
2	1.49	1800	1725	56H	DP	J	N

PH	Hz	VOLTS	FL AMPS	START TYPE	DUTY	INSL	S.F	AMB°C	ELEVATION
1	60	115/208-230	21/11.3-10.5	ACROSS THE LINE	CONTINUOUS	B3	1.15	40	3300

FULL LOAD EFF: 78.5	3/4 LOAD EFF: 78.1	1/2 LOAD EFF: 75	GTD. EFF	ELEC. TYPE	NO LOAD AMPS
FULL LOAD PF: 78.3	3/4 LOAD PF: 72.6	1/2 LOAD PF: 62.4	0	CAP START CAP RUN	10.7 / 5.4

F.L. TORQUE	LOCKED ROTOR AMPS	L.R. TORQUE	B.D. TORQUE	F.L. RISE°C
6.03 LB-FT	131.8 / 65.9	19.5 LB-FT 323	15.7 LB-FT 260	70

SOUND PRESSURE @ 3 FT.	SOUND POWER	ROTOR WK^2	MAX. WK^2	SAFE STALL TIME	STARTS / HOUR	APPROX. MOTOR WGT
0 dBA	10 dBA	0 LB-FT^2	0 LB-FT^2	0 SEC.	0	0 LBS.

***** SUPPLEMENTAL INFORMATION *****

DE BRACKET TYPE	ODE BRACKET TYPE	MOUNT TYPE	ORIENTATION	SEVERE DUTY	HAZARDOUS LOCATION	DRIP COVER	SCREENS	PAINT
STANDARD	STANDARD	RESILIENT BASE-EXTENDED STUDS	HORIZONTAL	FALSE	NONE	FALSE	NONE	GRAY (POWDER)

BEARINGS		GREASE	SHAFT TYPE	SPECIAL DE	SPECIAL ODE	SHAFT MATERIAL	FRAME MATERIAL
DE	OPE						
BALL	BALL	POLYREX EM	STANDARD 56	NONE	NONE	1144 STRESSPROOF (C-223)	ROLLED STEEL
6205	6203						

THERMO-PROTECTORS				THERMISTORS	CONTROL	SPACE /n HEATERS
THERMOSTATS	PROTECTORS	WDG RTDs	BRG RTDs			
NONE	AUTOMATIC	NONE	NONE	NONE	FALSE	NONE VOLTS

If Inverter equals NONE, contact factory for further information

INVERTER TORQUE: NONE
INV. HP SPEED RANGE: NONE
ENCODER: NONE
NONE NONE
NONE NONE PPR
BRAKE: NONE NONE
NONE P/N NONE
NONE NONE
NONE FT-LB NONE V NONE Hz

*
N
O
T
E
S
*

DATE: 06/27/2017 05:40:34 AM
 FORM 3531 REV.3 02/07/99
 ** Subject to change without notice.



REGAL REXNORD CORPORATION
TYPICAL PERFORMANCE CURVE for AC MOTOR

Customer

Curve at 230 Volts
60 HZ
2 HP

HP 2.00

PHASE 1

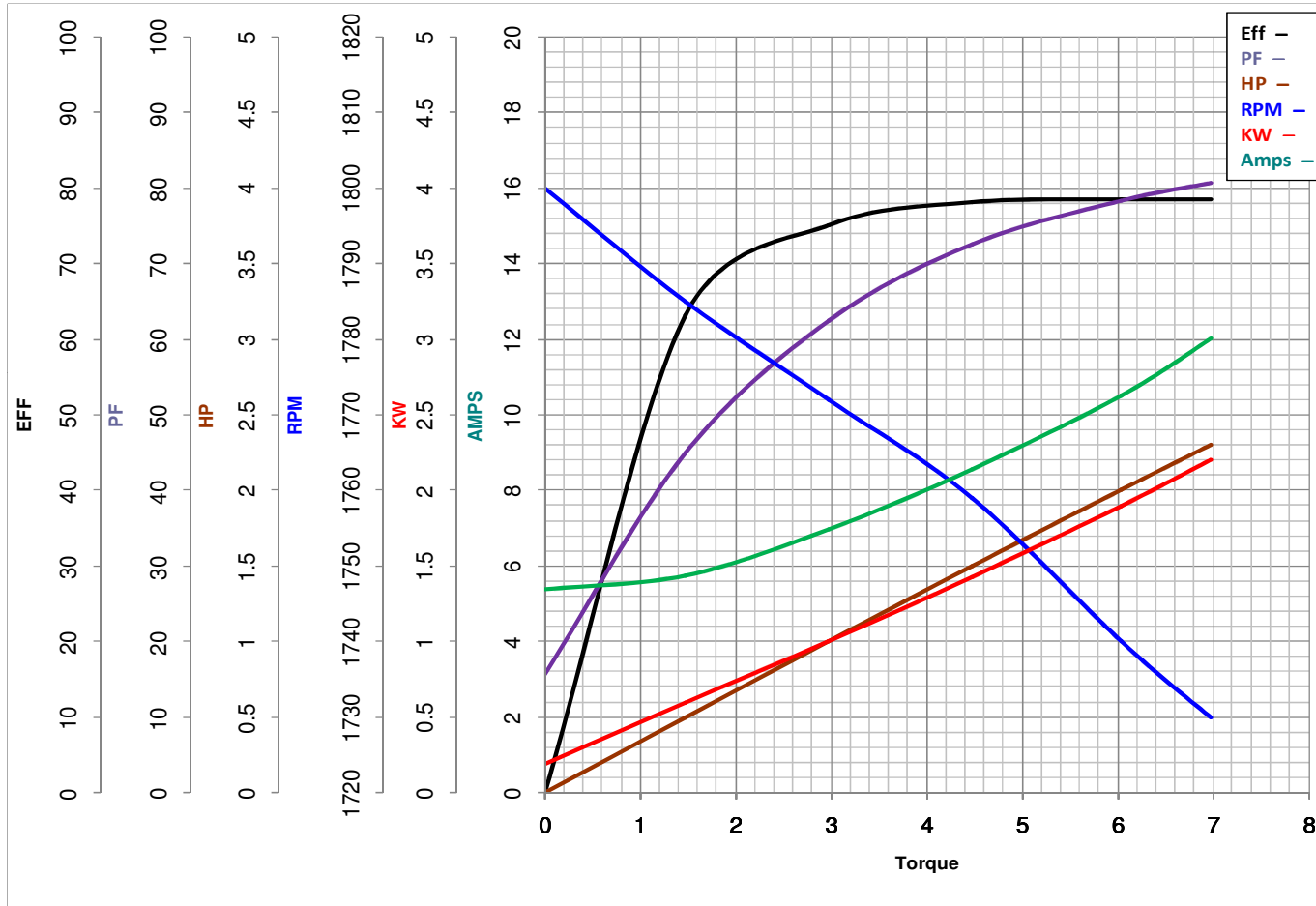
Model No 56B17D5331

VOLTS 115/208-230

Catalog No B352

HZ 60

RPM 1725



Torque in Lb.Ft

FL TORQUE 6.03 Lb.Ft
BD TORQUE 15.7 Lb.Ft
LR TORQUE 19.5 Lb.Ft

FL AMPS 21/11.3-10.5
PU TORQUE 11.9 Lb.Ft
LR AMPS 65.9

WINDING ZB407-3

Date 1/11/2019

EC Declaration of Conformity

The undersigned representing
the manufacturer:

Regal Beloit America
1946 West Cook Road
Fort Wayne, IN 46818

and the authorized representative
established within the Community:

Regal Beloit Italy
Via Modena, 18
24040 Ciserano(BG) - Italy

are committed to providing customers with products that comply with applicable regulations and international protocols to which they are subject, including the requirements of the European Parliament Directive on the Harmonization of the laws relating to electrical equipment designed for use within certain voltage limits (2014/35/EU).

Regal Beloit America declares that the following product(s), to which this declaration relates, are in conformity with the relevant sections of the EC standards listed below.

This statement supersedes any statements previously issued pertaining to the product(s) listed below and is subject to change without notice.

Model No : 056B17D5331

(Model No. may contain prefix and/or suffix characters)

Catalog No : B352

Rework No : N/A

Directives :

Low Voltage Directive 2014/35/EU

Harmonized Standards Used :

EN 60034-1: 2010 (IEC 60034-1: 2010)

EN 60034-5: 2001/A1:2007 (IEC 60034-5: 2000/A1:2006)

Authorized Representative:



Zach Stauffer
Vice President, Engineering

Authorized Representative in the Community:



Stefano Casiraghi
Technology Director, Engineering

Created on 07/08/2025

CE 25