

# PROTOS<sub>x</sub>

## PX-901 – Bus End Terminal

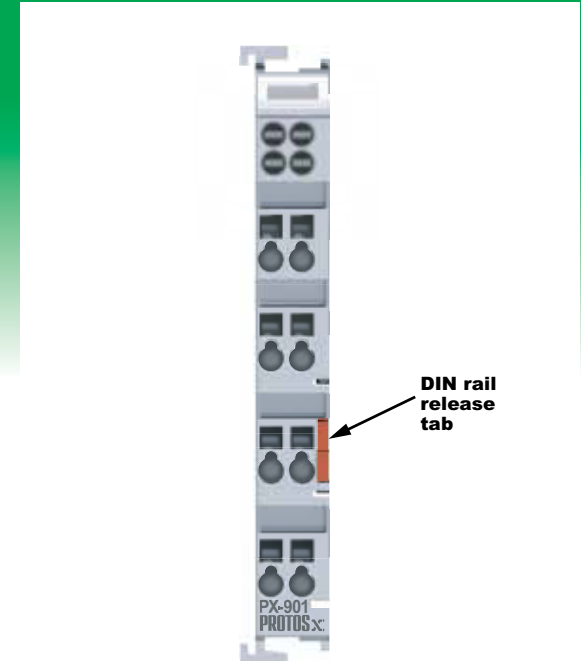
The PX-901 Bus End Terminal is installed at the end of a terminal assembly and is required for proper I/O Bus communication. Use with the Protos X™ I/O System.



Protos X™ is a trademark of Automationdirect.com Incorporated

Sales 800-633-0405

PX-901 Terminal Specifications	
Current Consumption (from I/O Bus)	None
Electrical Isolation	500V <sub>rms</sub> (I/O Bus/signal voltage)
Adjacent Mounting on Bus Terminals with Power Contact	Yes
Adjacent Mounting on Bus Terminals without Power Contact	Yes
Passes Terminal Bus Power	No
Passes PE Bus	No
General Specifications	
Operating Temperature	32° to 131°F (0° to 55°C)
Storage Temperature	13° to 185°F (-25° to 85°C)
Relative Humidity	5% to 95%, non-condensing
Environment Air	No corrosive gases permitted
Mounting/Orientation Restrictions	35mm DIN rail/None
Vibration	conforms to EN 60068-2-6
Shock	conforms to EN 60068-2-27, EN 60068-2-29
Noise Immunity	conforms to EN 61000-6-2/ EN61000-6-4
Protection Class	IP20
Weight	50g
Dimensions (WxHxD)	12 x 100 x 68.8 mm (0.47 x 3.94 x 2.71 in)
Agency Approvals	UL File No. E157382, CE



www.automationdirect.com

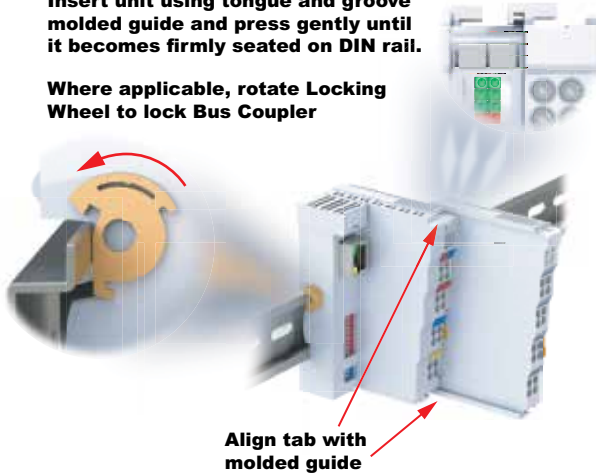
Tech Support 770-844-4200

## MOUNTING

For system assembly, first attach a bus coupler by snapping onto 35mm DIN rail and securing into position using the DIN rail locking wheel (where applicable) located on the left side of the coupler. To add a bus terminal, insert unit onto right side of bus coupler using the tongue and groove at the top and bottom of the unit, pressing gently until it snaps onto the DIN rail. A proper connection cannot be made by sliding the units together on the DIN rail. When correctly installed, no significant gap can be seen between the attached units. Bus connection is made through the six slide contacts located on the upper right side of the units. Add up to 64 bus terminals per bus coupler, including a bus end terminal.

**Insert unit using tongue and groove molded guide and press gently until it becomes firmly seated on DIN rail.**

**Where applicable, rotate Locking Wheel to lock Bus Coupler**

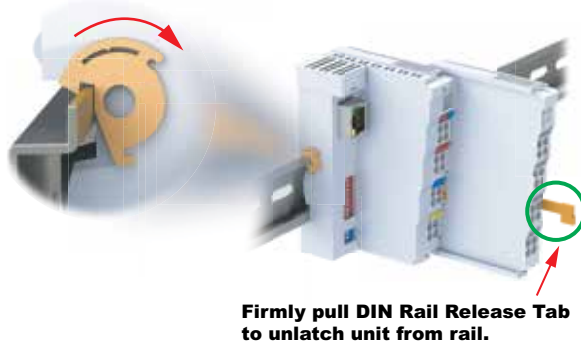


**Align tab with molded guide**

## REMOVAL

A locking mechanism prevents individual units from being pulled off. For bus terminal removal, pull the orange DIN rail release tab firmly to unlatch the unit from the rail. If attached to other terminal units, slide unit forward until released. For bus couplers with locking wheels, release the DIN rail locking wheel, then pull firmly on DIN rail release tab.

**Where applicable, rotate Locking Wheel to unlock Bus Coupler**



**Firmly pull DIN Rail Release Tab to unlatch unit from rail.**

## IMPORTANT

For complete assembly instructions and compatibility between terminals see the PX-USER-M manual available for free download at [www.automationdirect.com](http://www.automationdirect.com).

## HOT SWAP NOT PERMITTED

Always remove power from the system before inserting or removing bus terminals or couplers as failure to do so could cause malfunction or damage to the terminals, couplers or other connected devices.

## WARNING

To minimize the risk of potential safety problems, you should follow all applicable local and national codes that regulate the installation and operation of your equipment. These codes vary from area to area and it is your responsibility to determine which codes should be followed, and to verify that the equipment, installation, and operation are in compliance with the latest revision of these codes.

**Equipment damage or serious injury to personnel can result from the failure to follow all applicable codes and standards. We do not guarantee the products described in this publication are suitable for your particular application, nor do we assume any responsibility for your product design, installation, or operation.**

If you have any questions concerning the installation or operation of this equipment, or if you need additional information, please call Technical Support at 770-844-4200.

This publication is based on information that was available at the time it was printed. At AutomationDirect.com® we constantly strive to improve our products and services, so we reserve the right to make changes to the products and/or publications at any time without notice and without any obligation. This publication may also discuss features that may not be available in certain revisions of the product.

Document Name	Edition/Revision	Date
PX-901-DS	1st ED.	9/15/2014

Copyright 2014, AutomationDirect.com Incorporated/All Rights Reserved Worldwide.