

DO-MORE DRIVER



In This Chapter...

Do-more Using Tag Integration5-2
-------------------------------------	------

Do-more Using Tag Integration

Using Point of View along with the Do-more communications driver allows you to easily import the Do-more addressing (Built-in memory, Heap, Structures, Nicknames) into your POV project using tag integration. By using tag integration, all tags from the PLC can be browsed in the Object Finder, but an individual tag is not added to your project tags database nor counted against the project's tag limit until you actually use it somewhere in your project.

In this example, we are going to cover how to read the clock seconds from a Do-more PLC via Ethernet.



NOTE: Any time that the memory configuration in the Do-more Designer software is changed in a project, the memory version is changed and will be loaded into the PLC on project transfer. Performing "File>Export>Element Documentation" will create the CSV file that POV uses and will also contain this memory version.

During run time, the .csv version is compared to the PLC version to make sure that they match. If there is a mismatch between versions, only tags referencing Heap, Nicknames, user defined blocks in a SDS or MDS, or any object referencing a tag integration tag will cause invalid data ??? for those tags and you will get an 'Out-of-Sync: The version of the CSV file does not match with the PLC' error. This can be verified by turning on the Protocol Analyzer option in the Output Window:

```
Output
...Rx (10.1.46.102:28784):00 00 00 00 00 00 00 00 00 00 00 00 00 00 00 00 00 00 00 00
...Rx (10.1.46.102:28784):00 00 00 00 00 00 00 00 00 00 00 00 00 00 00 00 00 00 00 00
...Rx (10.1.46.102:28784):00 00 00 00 00 00 00 00 00 00 00 00 00 00 00 00 00 00 00 00
...Rx (10.1.46.102:28784):00 00 00 00 00 00 00 00 00 00 00 00 00 00 00 00 00 00 00 00
...Rx (10.1.46.102:28784):00 00 00 00 00 00 00 00 00 00 00 00 00 00 00 00 00 00 00 00
PLC Version is: 2210231C CSV Version: 0FC26F73
```

Steps to recover an 'Out-of Sync' Error caused by Do-more project download:

1. Update .csv file that POV is referencing to match the Do-more PLC version.
2. Stop the POV project runtime.
3. Click Run to start the runtime project.



NOTE: You can alternatively download the previous Do-more project file that matches the POV version to recover from the error.



NOTE: An IP address will need to be set up in the Do-more using either a H2-DM1E, T1H-DM1E or H2-DM1 with a H2-ECOM100 (with firmware version 4.0.1808 or higher) installed prior to starting this exercise.

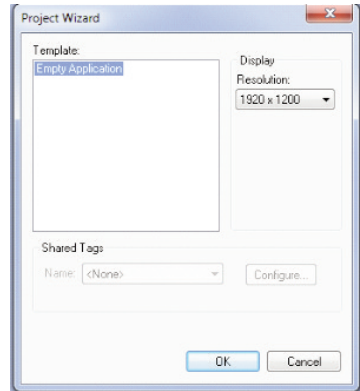
- 1) Open the Do-more Designer Software and create a new project.
- 2) Download the project to the Do-more PLC.
- 3) Click on File > Export > Element Documentation.

- 4) Choose 'Cmore Do-more driver format' (non-plus version) > save this to a location on your PC as 'POV example'.
- 5) Open Point of View software.
- 6) Click on Application Menu button and select New.
- 7) Enter 'Do-more Example' as a project name, select your product type that is currently licensed on the USB key for the PC you are currently using > select OK. (Ignore if in Demo Mode.)

Menu Button

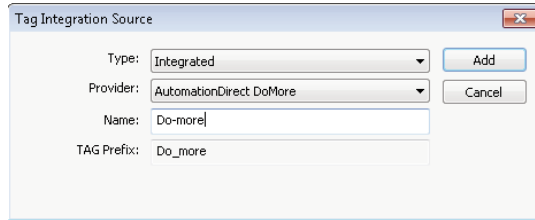


- 8) Project Wizard will open > select OK (seen on right).

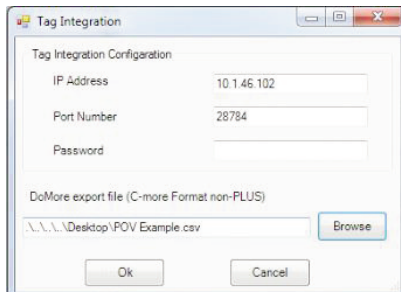


Next we will use tag integration to setup the communications to the Do-more:

- 9) Click on Project tab > then select Communication on the ribbon bar.
- 10) Under Tag Integration, click on Add.
- 11) Select the drop down next to Provider, and choose AutomationDirect DoMore.



- 12) In the Name field the default name is "DEV", change this to "Do-more" > click on Add.
- 13) Next, for IP address type in your Do-more IP address.
- 14) Optional: Change port number (default 28784) and enter a password if needed.
- 15) Click on the Browse button > then browse for your Do-more project .csv file we saved in step 2 "POV example".

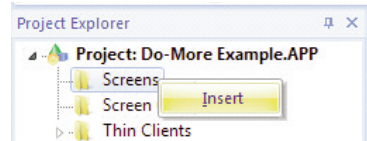


Chapter 5: Do-more Driver

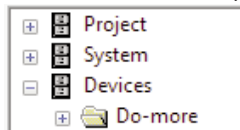
- 16) Click on the OK button > then click on OK once again.

All the tags from the .csv have now been imported into your POV project. In the next steps, we will create a text object to read the clock seconds.

- 17) Click on the Graphics tab at the bottom of the Project Explorer pane.
- 18) Now right click on Screens and select Insert > then select OK.
- 19) On the ribbon bar under the 'Graphics' tab > select 'Active Objects' > select Text.



- 20) This will give you a cross-hair, left click and place anywhere on the screen work area.
- 21) Now type in 'Do-more Seconds: ##' and select Enter.
- 22) Double left click on the above entry to open the properties.
- 23) Click on 'Text data link'.
- 24) At the end of the Tag/Expression field, click on the browse button
- 25) In the left-hand column, you will see a Do-more folder under Devices.



Expand the Do-more folder > click on Memory Blocks > then select any folder to see the tags listed on the right that were brought in during the Tag Integration process.

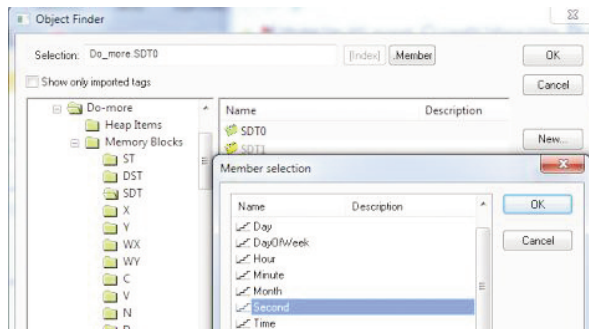


NOTE: These tags are shown in gray indicating that you still need to select and Import the selected tags to be used in the project.

- 26) Next, select SDT folder> SDT0 Class tag > select member and choose Second > select OK.



NOTE: Make sure 'show only imported tags' is unchecked.

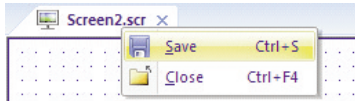


- 27) In the selection field it will show 'Do_more.SDT0.Second' > select OK >.

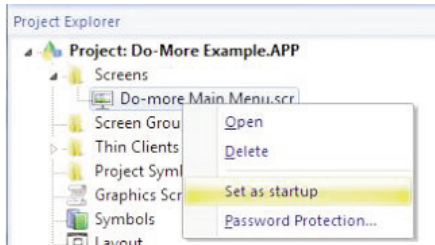


NOTE: Since the SDT0 class tag is a Structure, it is now in black indicating that all members of that Structure have been imported and can be used in your project. In addition, notice your tag count (bottom right hand corner) has increased by nine.

- 28) Click the OK button > you should see Do_more.SDT0.Second in the Tag/Expression Field.
 29) Close the Object Properties window.
 30) Right click on the current screen tab and select Close.



- 31) On the pop up, select Yes to save changes.
 32) Change the file name to 'Do-more Main Menu', then select Save.
 33) Under the screen folder right-click on our newly created screen > select 'Set as Startup'.

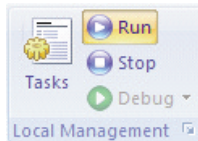


We will now run the project to verify communications between the PC and the Do-more:



NOTE: Make sure the Do-more is in Run mode. Also make sure your PC is connected to the Do-more Ethernet port or switch prior to placing the project in Run.

- 34) On the ribbon bar > 'Home' tab > Local management > select the Run button.



- 35) You should now see the seconds updating on your screen.



NOTE: If any part of the project does not work as expected, switch back to the development application (ALT+TAB) and then click Stop on the Home tab of the ribbon. Begin troubleshooting.

Notes:

