

P3000 DRIVER



In This Chapter...

P3000 Using Tag Integration	2-2
-----------------------------------	-----


P3000 Using Tag Integration

Using Point of View along with the P3000 communications driver allows you to easily import the PAC tag database into your POV project using tag integration. With tag integration, all the tags from the PAC can be browsed in the Object Finder, but individual tags are not added to your project tag database nor counted against the project's tag limit until you actually use it somewhere in your project.

In this example, we are going to cover how to read the clock seconds from a P3000 PAC via Ethernet.



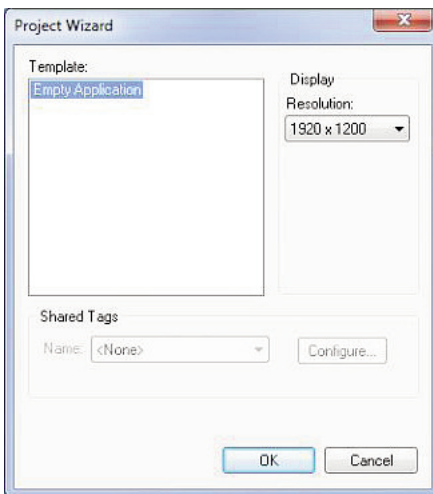
NOTE: An IP address will need to be setup in the PAC prior to starting this exercise.

- 1.) Open the Productivity Suite Software and create a new project.
- 2.) Click on File > Save As > and name 'POV example'.
- 3.) Connect to the PAC, download the project and ensure the PAC is in RUN.
- 4.) Open the Point of View software.
- 5.) Click on the Application Menu button and select New. 
- 6.) Enter 'P3000 Example' as the project name. Select the product type that is currently licensed on the USB key for the PC you are using, then hit OK. (Ignore if in Demo Mode)

Product type*:

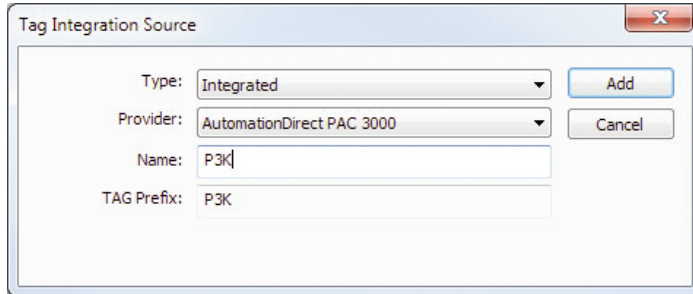
Windows Professional (5000 tags)
Windows Standard (1000 tags)
Windows Lite (500 tags)

- 7.) The Project Wizard will open > Hit OK.

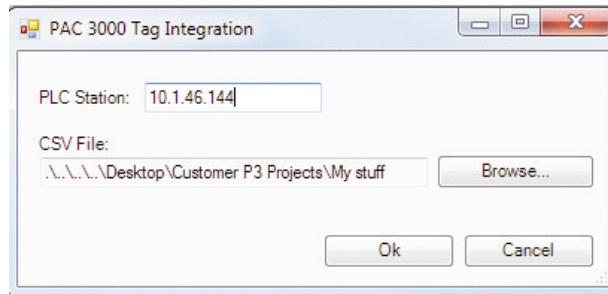


Next, we will use tag integration to setup the communications to the P3000:

- 8.) Click on the Project tab > select Communication on the ribbon bar.
- 9.) Under Tag Integration, click on Add.
- 10.) Select the drop down next to Provider, and choose AutomationDirect PAC 3000.



- 11.) In the Name field the default name is 'DEV', change this to 'P3K' > Click on Add.
- 12.) Next for PLC station, type in your PAC IP address.



- 13.) Click on the Browse button > now browse for your PAC project .csv file we saved in step 2 'POV example'.
- 14.) Click on the OK button > Click on the OK once again.



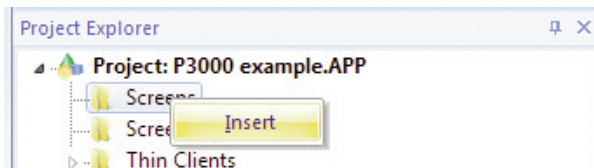
NOTE: All the tags from the .csv have now been imported into your POV project.




NOTE: Integrated tags are not added to a Main or Standard driver worksheet, these tags are found using the Object Finder which is located in the Tags section of the Home ribbon. Open the Object Finder and then expand the Devices.

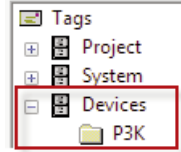
Next, we will create a text object to read the clock seconds:

- 15.) Click on the Graphics tab at the bottom of the Project Explorer pane.
- 16.) Now right click on Screens and select Insert > then select OK.

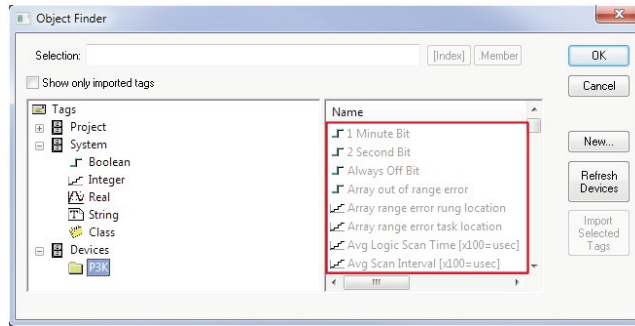


Chapter 2: P3000 Driver

- 17.) On the ribbon bar under the Graphics tab select Active Objects > then Text. This will give you a cross-hair, left click and place anywhere on the screen work area.
- 18.) Now type in 'P3KSeconds: ##' > Hit Enter.
- 19.) Double left click on the above entry to open the properties.
- 20.) Click on 'Text data link'.
- 21.) At the end of the Tag/Expression field, click on the Browse button. 
- 22.) In the left hand column, you will see a P3K folder under Devices. Click on the P3K folder and in right hand window you will see all of the tags brought in during the Tag Integration process.



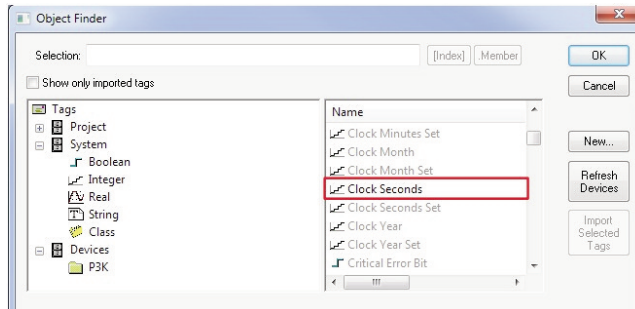
NOTE: These tags are shown in grey indicating that you still need to select and import the desired tags to be used in the project.



- 23.) Next type 'Clock Seconds' in the Selection Field, this will filter the tags listed.
- 24.) Left click on the Clock Seconds tag, the Import Selected Tags will now be highlighted for you to select.
- 25.) Select Yes on the next pop up > hit OK once successfully adding the tag > then select OK to close the object finder and apply this tag to your object.

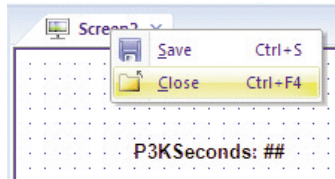


NOTE: The Clock Seconds tag is now in black indicating the tag has been imported and can be used in your project. In addition, notice your tag count (bottom right hand corner) increased by one.

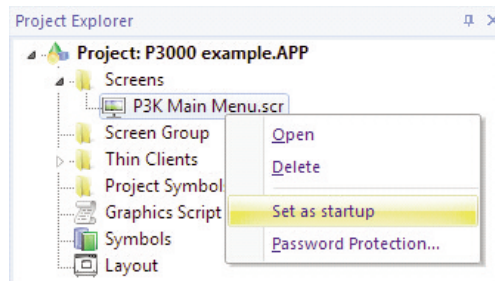


- 26.) Now you should see P3K.Clock_Seconds in the Tag/Expression Field.

- 27.) Close the Object Properties window.
- 28.) Right click on the current screen tab and select Close.



- 29.) On the pop up, select Yes to save changes.
- 30.) Change the file name to 'P3K Main Menu', then select Save.
- 31.) Under the screen folder > right click on our newly created screen > select 'Set as Startup'.

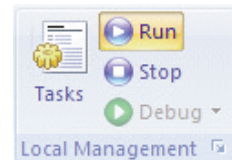


We will now run the project to verify communications between the PC and the PAC:



NOTE: Ensure your PC is connected to the P3000 PAC Ethernet port or switch prior to placing in Run.

- 32.) On the ribbon bar > under the 'Home' tab and Local Management > select the Run button.
- 33.) You should now see the seconds updating on your screen.



NOTE: If any part of the project doesn't work as expected (or to exit the runtime application), switch back to the development application (ALT+TAB) and then click Stop on the Home tab of the ribbon. Then if needed, begin troubleshooting.



NOTE: If tag changes were made in the P3000 project, you must save the changes and then select "Refresh Devices" in the POV Object Finder window in order to update the window and reflect these changes.

Notes:

