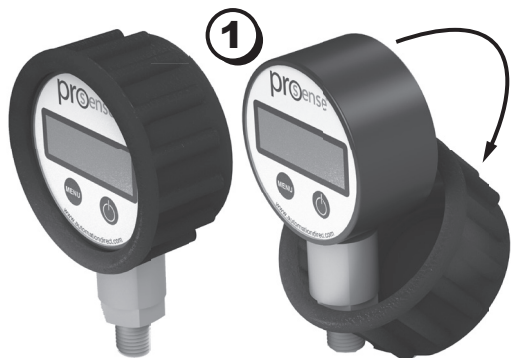


Menu Button
Press
Changes pressure units: (psi, mH ₂ O, mmHg, mbar, kPa ranges ≤ 100psig) (psi, bar, kg/cm ² , MPa, atm ranges ≥ 200psig)
Hold for 4-5 Seconds and Release
Reset to zero (this process will take a few seconds)

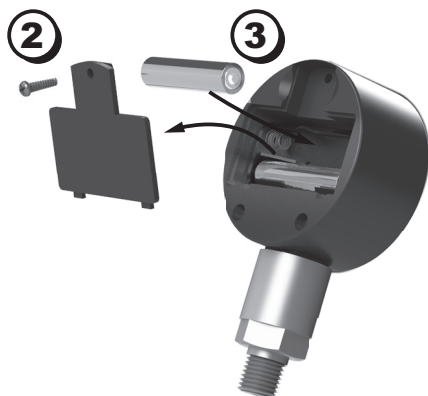
Power Button
Press
Turns gauge ON for about 1 minute and displays battery reading. Backlight* will remain ON for 10 seconds
Turns gauge OFF (hold for 2 seconds)
Press While ON
Turns backlight* back ON for 10 seconds
* Backlight automatically comes ON when pressure changes ±10% of scale (when gauge is ON)

Remove Rubber Boot



To Change Batteries (2 x AAA)	
1.	Remove rubber boot
2.	Remove top phillips screw to open cover
3.	Exchange batteries (two AAA batteries)
4.	Close cover and re-install screw
5.	Re-install rubber boot

Open Rear Compartment and Replace Battery



Setup Options	
Hold Menu Button for about 6 seconds	
A	Press Menu Button and Display will show "OFF=0". This selects the Auto or Manual Shut Off modes. Press Power Button to select "0" or "1".
	Off=0: Auto Shut Off mode; Display automatically shuts OFF after about 1 minute.
	Off=1: Manual Shut Off mode; Display will remain constantly ON until Shut Off manually (the life of the batteries is about 15 days).
B	Press Menu Button and Display will show "HL=0". This selects the Display mode. Press Power Button to select "0" or "1".
	HL=0: Display shows actual and continuous process pressure
	HL=1: Display shows only peak process pressure*
C	Press Menu Button to return to process pressure display
* Gauge needs to be cycled ON/OFF to be reset	