

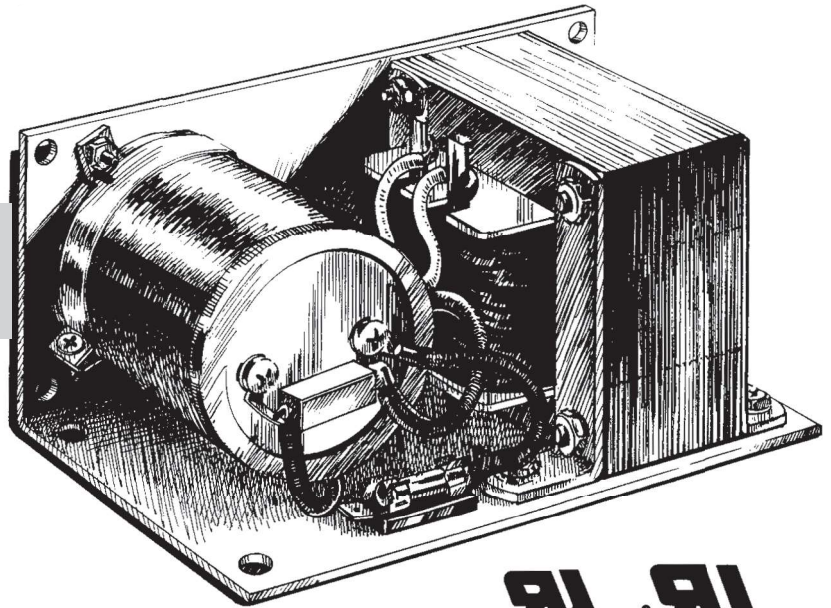
IP500U SERIES

UNREGULATED POWER SUPPLY LINE

STANDARD FEATURES

- ** HIGH SURGE CURRENT CAPABILITIES
- ** ISOLATED AC INPUT
- ** COMPUTER GRADE CAPACITORS
- ** FLOATING OUTPUT
- ** FULL RATED TO 55 DEGREES CELSIUS
- ** OPEN FRAME CONSTRUCTION
- ** SECONDARY FUSE PROTECTION
- ** 50 AMP, 200 VOLT FULL BRIDGE RECTIFIER
- ** FULL TWO YEAR WARRANTY

** *DROP IN REPLACEMENT FOR ACME
BLACKLINE SERIES & OTHER
UNREGULATED POWER SUPPLY MODELS*



SPECIFICATIONS

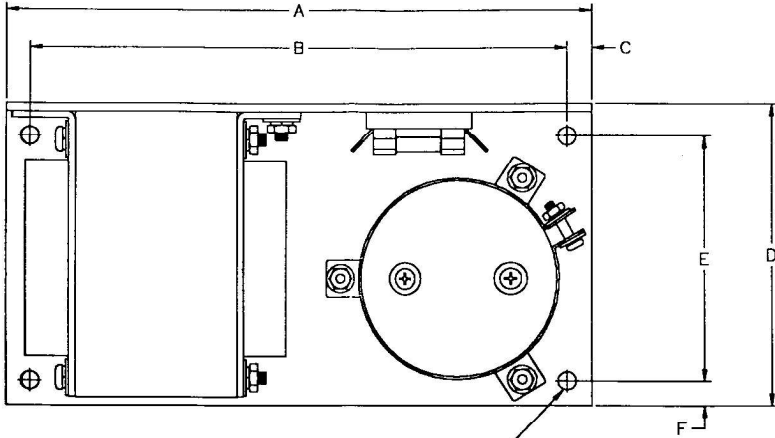
- ** AC INPUT 47-63 HZ
- ** 108/120/132/216/240/264
VAC INPUT SELECTION
- ** OUTPUT RIPPLE: 3% RMS
AT FULL RATED LOAD,
4% ON 12VOLT MODEL.
- ** EFFICIENCY @ FULL LOAD 80% TYPICAL
- ** UL RECOGNIZED: FILE NUMBER E133338
- ** CE MARKED COMPLIES WITH THE STANDARD EN 60590 AND
LOW VOLTAGE DIRECTIVE 92/59/EEC.



Our IP500U series unregulated power supply line is designed at low cost for high current applications when full regulation is not required. This rugged, highly reliable power supply line is ideal for applications such as powering solenoids, relays, DC motors, lamps, battery chargers and DC-DC converters. Standard D.C. outputs are listed below, other outputs from 9 to 175 volts are available on special order.

TYPICAL DC OUTPUT @ 120VAC INPUT				
MODEL NUMBER	NO LOAD	HALF LOAD	FULL LOAD	AMPS FULL LOAD
IP500U12	15.0	13.0	12.0	30
IP500U24	29.2	26.8	24.6	20
IP500U36	42.8	38.2	36.1	13.3
IP500U48	56.6	52.8	48.8	10
IP500U65	75.2	68.8	65.2	7.7
IP500U75	85.5	78.2	74.8	6.6

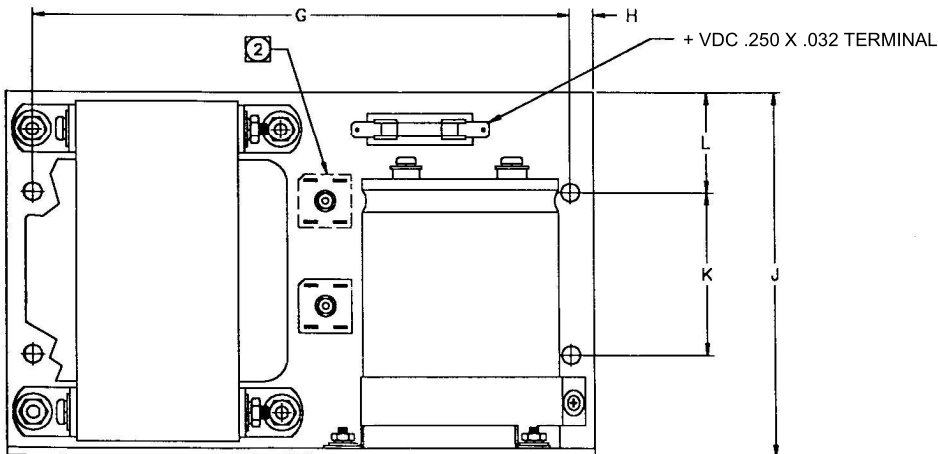
OUTLINE AND MOUNTING IPU 500 U SERIES



.281 DIA MTG HOLES (8X)

NOTES: UNLESS OTHERWISE SPECIFIED

1. OVERALL SIZE: 9.00" X 5.62" X 4.62"
228.60mm x 142.75mm x 117.35mm
WEIGHT 18 LBS/8.16kg
2. OPTIONAL LOCATION FOR ADDITIONAL RECTIFIER.



DIMENSIONS		
	INCH	MM
A	9.00	228.6
B	8.25	209.55
C	.37	9.40
D	4.62	117.35
E	3.750	95.25
F	.38	9.65
G	8.240	209.30
H	.35	8.89
J	5.62	142.75
K	2.500	63.50
L	1.56	39.62

A.C. CONNECTION TABLE

NOMINAL AC INPUT 47 - 63 HZ	JUMPER	APPLY AC	FUSE AT
108	1 & 5, 2 & 6	1 & 2	8 AMPS
120	1 & 5, 3 & 7	1 & 3	8 AMPS
132	1 & 5, 4 & 8	1 & 4	8 AMPS
216	2 & 5	1 & 6	4 AMPS
240	3 & 5	1 & 7	4 AMPS
264	4 & 5	1 & 8	4 AMPS

