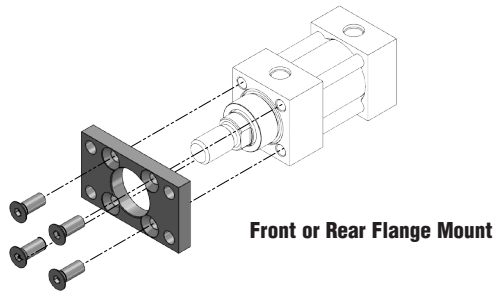


## Front or Rear Flange Mount Plate\*

For front or rear flange mounting, use the Flange Mount Plate Kit (flange mount plate can go on either front or rear). Use the table below to select the correct Flange Mount Plate for your HP-series cylinder. Use the drawing below for installation reference. **NOTE: Refer to derating table below for new rated pressure.**

Part Number	Description	Bore Size	Bolt Size	Torque
HDM-1201	5/8" Rod Mount Plate, Steel	1-1/2"	3/8-24 FHCS x 1" Long	35 ft.-lbs.
HDM-1202	1" Rod Mount Plate, Steel			
HDM-1203	1" Rod Mount Plate, Steel	2"	1/2-20 FHCS x 1.25" Long	80 ft.-lbs.
HDM-1204	1-3/8" Rod Mount Plate, Steel			
HDM-1205	1" Rod Mount Plate, Steel	2-1/2"	1/2-20 FHCS x 1.25" Long	80 ft.-lbs.
HDM-1206	1-3/8" Rod Mount Plate, Steel			
HDM-1207	1-3/8" Rod Mount Plate, Steel	3-1/4"	5/8-18 FHCS x 1.5" Long	160 ft.-lbs.
HDM-1208	1-3/4" Rod Mount Plate, Steel			
HM4400A	1-3/4" Rod Mount Plate, Steel	4"	5/8-18 FHCS x 1.5" Long	160 ft.-lbs.
HM4400B	2" Rod Mount Plate, Steel			

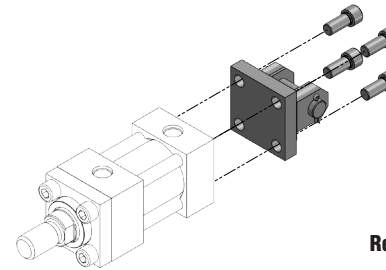


*Mounting Plate (Rectangular Flange) Pressure Derating		
Cylinder Bore Size (in)	Cylinder Rod Diameter (in)	Max Pressure (PSI)
1-1/2	5/8	2500
	1	1500
2	1	2500
	1-3/8	1500
2-1/2	1	2500
	1-3/8	1900
3-1/4	1-3/8	2500
	1-3/4	2100
4	1-3/4	2500
	2	1800

## Rear Clevis Mount

For rear clevis mounting, use the Rear Clevis Mount Kit. Use the table below to select the correct Clevis Mount for your HP-series cylinder. Use the drawing below for installation reference.

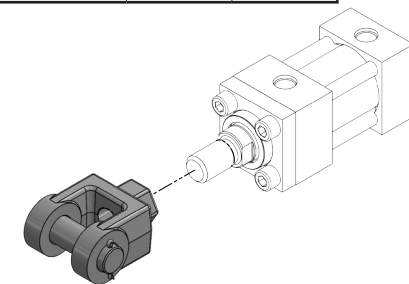
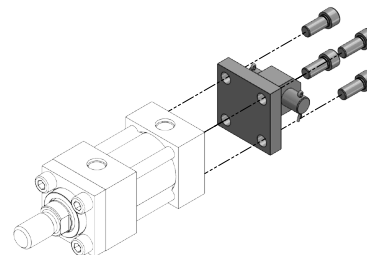
Part Number	Description	Bore Size	Bolt Size	Torque
HM24150-6	Rear Clevis Bracket/Mount, Steel	1-1/2"	3/8-24 SHCS x 1" Long	35 ft.-lbs.
HM24200-6	Rear Clevis Bracket/Mount, Steel	2"	1/2-20 SHCS x 1.25" Long	80 ft.-lbs.
HM24250-6	Rear Clevis Bracket/Mount, Steel	2-1/2"	1/2-20 SHCS x 1.25" Long	80 ft.-lbs.
HM24325-6	Rear Clevis Bracket/Mount, Steel	3-1/4"	5/8-18 SHCS x 1.5" Long	160 ft.-lbs.
HM24400-6	Rear Clevis Bracket/Mount, Steel	4"	5/8-18 SHCS x 1.5" Long	160 ft.-lbs.



## Rod Clevis Mount

For rod clevis mounting, use the Rod Clevis Mount Kit. Use the table below to select the correct Pivot Eye Mount for your HP-series cylinder. Use the drawing below for installation reference. **Note: It is suggested that a thread lock similar to 243 LOCTITE® Threadlocker be used to secure the Rod Clevis Mount.**

Part Number	Description	Rod Size	Bore Size
C1150-86	Rod Clevis Mount, Steel	5/8"	1-1/2"
C1200-86	Rod Clevis Mount, Steel	1"	2"
C1400-86	Rod Clevis Mount, Steel	1-3/8"	2-1/2"
C1600-86	Rod Clevis Mount, Steel	1-3/4"	3-1/4"
C1800-86	Rod Clevis Mount, Steel	2"	4"



## Rear Pivot Eye Mount

For rear pivot eye mounting, use the Rear Pivot Eye Mount Kit. Use the table below to select the correct Pivot Eye Mount for your HP-series cylinder. Use the drawing at right for installation reference.

Part Number	Description	Bore Size	Bolt Size	Torque
HM21150-6	Rear Pivot Eye Mount, Steel	1-1/2"	3/8-24 SHCS x 1" Long	35 ft.-lbs.
HM21200-6	Rear Pivot Eye Mount, Steel	2"	1/2-20 SHCS x 1.25" Long	80 ft.-lbs.
HM21250-6	Rear Pivot Eye Mount, Steel	2-1/2"	1/2-20 SHCS x 1.25" Long	80 ft.-lbs.
HM21325-6	Rear Pivot Eye Mount, Steel	3-1/4"	5/8-18 SHCS x 1.5" Long	160 ft.-lbs.
HM21400-6	Rear Pivot Eye Mount, Steel	4"	5/8-18 SHCS x 1.5" Long	160 ft.-lbs.