

DataWorx WinPLC User Manual PC-WPLC-M



www.automationdirect.com

DataWorx WinPLC

User Manual

PC-WPLC-M



Please include the manual number and the manual issue, both shown below, when communicating with Technical Support regarding this publication.

Manual Number: PC-WPLC-M
Issue: Second Edition, Revision A
Issue Date: 26 February 14

Publication History		
Issue	Date	Description of Changes
First Edition	15 Oct 03	Original
Second Edition	01 July 05	New logos and screen captures
Second Edition, Rev. A	26 February 14	Added Windows 7 support



WARNING

Thank you for purchasing automation equipment from Automationdirect.com™, doing business as, AutomationDirect. We want your new automation equipment to operate safely. Anyone who installs or uses this equipment should read this publication (and any other relevant publications) before installing or operating the equipment.

To minimize the risk of potential safety problems, you should follow all applicable local and national codes that regulate the installation and operation of your equipment. These codes vary from area to area and usually change with time. It is your responsibility to determine which codes should be followed, and to verify that the equipment, installation, and operation is in compliance with the latest revision of these codes.

At a minimum, you should follow all applicable sections of the National Fire Code, National Electrical Code, and the codes of the National Electrical Manufacturer's Association (NEMA). There may be local regulatory or government offices that can also help determine which codes and standards are necessary for safe installation and operation.

Equipment damage or serious injury to personnel can result from the failure to follow all applicable codes and standards. We do not guarantee the products described in this publication are suitable for your particular application, nor do we assume any responsibility for your product design, installation, or operation.

Our products are not fault-tolerant and are not designed, manufactured or intended for use or resale as on-line control equipment in hazardous environments requiring fail-safe performance, such as in the operation of nuclear facilities, aircraft navigation or communication systems, air traffic control, direct life support machines, or weapons systems, in which the failure of the product could lead directly to death, personal injury, or severe physical or environmental damage ("High Risk Activities"). AutomationDirect specifically disclaims any expressed or implied warranty of fitness for High Risk Activities.

For additional warranty and safety information, see the Terms and Conditions section of our catalog. If you have any questions concerning the installation or operation of this equipment, or if you need additional information, please call us at 770-844-4200.

This publication is based on information that was available at the time it was printed. At AutomationDirect we constantly strive to improve our products and services, so we reserve the right to make changes to the products and/or publications at any time without notice and without any obligation. This publication may also discuss features that may not be available in certain revisions of the product.

Trademarks

This publication may contain references to products produced and/or offered by other companies. The product and company names may be trademarked and are the sole property of their respective owners. AutomationDirect disclaims any proprietary interest in the marks and names of others.

Copyright 2003, 2005, Automationdirect.com™ Incorporated, All Rights Reserved

No part of this manual shall be copied, reproduced, or transmitted in any way without the prior, written consent of Automationdirect.com™ Incorporated. AutomationDirect retains the exclusive rights to all information included in this document.

⚡ AVERTISSEMENT ⚡

Nous vous remercions d'avoir acheté l'équipement d'automatisation de Automationdirect.comMC, en faisant des affaires comme, AutomationDirect. Nous tenons à ce que votre nouvel équipement d'automatisation fonctionne en toute sécurité. Toute personne qui installe ou utilise cet équipement doit lire la présente publication (et toutes les autres publications pertinentes) avant de l'installer ou de l'utiliser.

Afin de réduire au minimum le risque d'éventuels problèmes de sécurité, vous devez respecter tous les codes locaux et nationaux applicables régissant l'installation et le fonctionnement de votre équipement. Ces codes diffèrent d'une région à l'autre et, habituellement, évoluent au fil du temps. Il vous incombe de déterminer les codes à respecter et de vous assurer que l'équipement, l'installation et le fonctionnement sont conformes aux exigences de la version la plus récente de ces codes.

Vous devez, à tout le moins, respecter toutes les sections applicables du Code national de prévention des incendies, du Code national de l'électricité et des codes de la National Electrical Manufacturer's Association (NEMA). Des organismes de réglementation ou des services gouvernementaux locaux peuvent également vous aider à déterminer les codes ainsi que les normes à respecter pour assurer une installation et un fonctionnement sûrs.

L'omission de respecter la totalité des codes et des normes applicables peut entraîner des dommages à l'équipement ou causer de graves blessures au personnel. Nous ne garantissons pas que les produits décrits dans cette publication conviennent à votre application particulière et nous n'assumons aucune responsabilité à l'égard de la conception, de l'installation ou du fonctionnement de votre produit.

Nos produits ne sont pas insensibles aux défaillances et ne sont ni conçus ni fabriqués pour l'utilisation ou la revente en tant qu'équipement de commande en ligne dans des environnements dangereux nécessitant une sécurité absolue, par exemple, l'exploitation d'installations nucléaires, les systèmes de navigation aérienne ou de communication, le contrôle de la circulation aérienne, les équipements de survie ou les systèmes d'armes, pour lesquels la défaillance du produit peut provoquer la mort, des blessures corporelles ou de graves dommages matériels ou environnementaux («activités à risque élevé»). La société AutomationDirect nie toute garantie expresse ou implicite d'aptitude à l'emploi en ce qui a trait aux activités à risque élevé.

Pour des renseignements additionnels touchant la garantie et la sécurité, veuillez consulter la section Modalités et conditions de notre documentation. Si vous avez des questions au sujet de l'installation ou du fonctionnement de cet équipement, ou encore si vous avez besoin de renseignements supplémentaires, n'hésitez pas à nous téléphoner au 770-844-4200.

Cette publication s'appuie sur l'information qui était disponible au moment de l'impression. À la société AutomationDirect, nous nous efforçons constamment d'améliorer nos produits et services. C'est pourquoi nous nous réservons le droit d'apporter des modifications aux produits ou aux publications en tout temps, sans préavis ni quelque obligation que ce soit. La présente publication peut aussi porter sur des caractéristiques susceptibles de ne pas être offertes dans certaines versions révisées du produit.

Marques de commerce

La présente publication peut contenir des références à des produits fabriqués ou offerts par d'autres entreprises. Les désignations des produits et des entreprises peuvent être des marques de commerce et appartiennent exclusivement à leurs propriétaires respectifs. AutomationDirect nie tout intérêt dans les autres marques et désignations.

Copyright 2003, 2005, Automationdirect.com™ Incorporated, Tous droits réservés

Nulle partie de ce manuel ne doit être copiée, reproduite ou transmise de quelque façon que ce soit sans le consentement préalable écrit de la société Automationdirect.com™ Incorporated. AutomationDirect conserve les droits exclusifs à l'égard de tous les renseignements contenus dans le présent document.

⚡ ADVERTENCIA ⚡

Gracias por comprar equipo de automatización de Automationdirect.com™. Deseamos que su nuevo equipo de automatización opere de manera segura. Cualquier persona que instale o use este equipo debe leer esta publicación (y cualquier otra publicación pertinente) antes de instalar u operar el equipo.

Para reducir al mínimo el potencial de riesgo debido a problemas de seguridad, debe seguir todos los códigos de seguridad locales o nacionales aplicables que regulan la instalación y operación de su equipo. Estos códigos varían de área en área y usualmente cambian con tiempo. Es su responsabilidad el determinar cuales códigos deben ser seguidos, y verificar que el equipo, instalación, y operación estén en cumplimiento con la revisión más reciente de estos códigos.

Como mínimo, debe seguir las secciones aplicables del Código Nacional de Incendio, Código Nacional Eléctrico, y los códigos de (NEMA) la Asociación Nacional de Fabricantes Eléctricos. Puede haber oficinas de regulación local o del gobierno que pueden asistir en determinar cuales códigos y normas son necesarios para una instalación e operación segura.

Falta de seguir todos los códigos y normas aplicables, puede resultar en daños al equipo o lesiones serias a personas. No garantizamos los productos descritos en esta publicación a ser adecuado para su aplicación en particular, ni asumimos ninguna responsabilidad por el diseño de su producto, la instalación, u operación.

Nuestros productos no son tolerantes a fallas y no han sido diseñados, fabricados o intencionados para el uso o reventa como un equipo de control de línea en ambientes peligrosos que requieren una ejecución sin fallas, tales como operación en facilidades nucleares, sistemas de navegación aérea, o de comunicación, control de tráfico aéreo, maquinas de soporte de vida, o sistemas de armas, en las cuales la falla del producto puede resultar directamente en muerte, heridas personales,

o daños físicos o ambientales severos ("Actividades de Alto Riesgo"). Automationdirect.com™ específicamente rechaza cualquier garantía ya sea expresada o implicada para actividades de alto riesgo.

Para información adicional acerca de garantía e información de seguridad, vea la sección de Términos y Condiciones de nuestro catalogo. Si tiene alguna pregunta sobre instalación u operación de este equipo, o si necesita información adicional, por favor llámenos al Lada (001) en (EEUU), número 770-844-4200.

Esta publicación esta basada en información disponible al momento de impresión. En Automationdirect.com™ nos esforzamos constantemente para mejorar nuestros productos y servicios, así que nos reservamos el derecho de hacer cambios al producto y/o a las publicaciones en cualquier momento sin notificación y sin ninguna obligación. Esta publicación también puede discutir características que no estén disponibles en ciertas revisiones del producto.

Marcas Registradas

Esta publicación puede contener referencias a productos producidos y/u ofrecidos por otras compañías. Los nombres de las compañías y productos pueden tener marcas registradas y son propiedad única de sus respectivos dueños. Automationdirect.com™, renuncia cualquier interés propietario en las marcas y nombres de otros.

Copyright 2003, 2005, Automationdirect.com™ Incorporated

Todos los Derechos Reservados

No se permite copiar, reproducir, o transmitir de ninguna forma ninguna parte de este manual sin previo consentimiento por escrito de Automationdirect.com™ Incorporated.

Automationdirect.com™ retiene los derechos exclusivos a toda la información incluida en este documento.

AUTOMATIONDIRECT.COM END USER LICENSE AGREEMENT AND LIMITED WARRANTY

The software accompanying this license agreement (the Software) is the property of **AutomationDirect.com**, or its suppliers, and is protected by United States and International Copyright laws and International treaty provisions. No ownership rights are granted by this Agreement or possession of the Software. Therefore, you must treat the Licensed Software like any other copyrighted material (e.g., a book or musical recording), except that you may make a single copy for backup or archival purposes. Your rights and obligations in its use are described as follows:

1. You may use and display this software on a single computer.
2. You may make one copy of the software for archival purposes or you may copy the software onto your hard disk and hold the original for archival purposes.
3. You may not modify or attempt to reverse engineer the software, or make any attempt to change or even examine the source code of the software.
4. You may transfer the software to another computer using the utilities provided. However, the software must be used on only a single computer at one time.
5. You may not give or distribute copies of the software or written materials associated with the software to others.
6. You may not sub-license, sell, or lease the software to any person or business.

Return Policy

The original licensee of the software can return it within thirty (30) days of purchase. Please call us for a Return Material Authorization Number.

Limited Warranty

AutomationDirect.com does not warrant that the Software will be error free, that it will satisfy your planned applications or that all defects in the Software can be corrected. If

AutomationDirect.com provides information or assistance regarding the use of the Software or otherwise, **AutomationDirect.com** is not assuming the role of engineering consultant. **AutomationDirect.com** disclaims responsibility for any errors or omissions arising in connection with engineering in which its Software or such information or assistance is used.

The foregoing is the sole and exclusive warranty offered by **AutomationDirect.com**.

AutomationDirect.com disclaims all other warranties, express or implied, including but not limited to the implied warranties of merchantability and fitness for a particular purpose, with regard to the licensed software and all accompanying materials.

In no event shall **AutomationDirect.com** be liable for incidental or consequential damages, including lost profit, lost savings, lost opportunities, or other incidental or consequential damages arising out of the use or inability to use the licensed software, even if **AutomationDirect.com** has been advised of the possibility of such damages.

AutomationDirect.com's entire liability shall be, at **AutomationDirect.com's** option, either (a) return of the price paid for the Software (or component), or (b) repair or replacement of the Software (or component) that does not meet **AutomationDirect.com's** Limited Warranty and which is returned to **AutomationDirect.com** within the warranty period. This shall be the sole and exclusive obligation of **AutomationDirect.com** and your sole and exclusive remedy with respect to any such failure. The Limited Warranty is void if failure of the Software (or component) has resulted from accident, abuse or misapplication.

Trademarks

Microsoft® and Microsoft Excel® are registered trademarks, Windows™ is a trademark of Microsoft Corporation.

Table of Contents

Chap 1.0 Introduction.....	1
Chap 2.0 Installation.....	2
Chap 3.0 Registration.....	10
Chap 4.0 Think & Do.....	13
Chap 5.0 DataWorx WinPLC.....	18
5.1 Server.....	18
5.1.1 Installing.....	18
5.1.2 Running.....	20
5.1.3 Pausing.....	21
5.1.4 Stopping.....	22
5.1.5 Diagnosing.....	23
5.1.6 Uninstalling.....	25
5.2 Monitor.....	26
5.2.1 Connecting.....	27
5.2.2 Configuring.....	28
5.2.3 Modifying a WinPLC.....	31
5.2.4 Deleting.....	33
5.2.5 Duplicating.....	34
5.2.6 Hiding.....	35
5.2.7 Backing up and Restoring.....	36
5.2.8 Listening.....	37
5.2.9 Locking / Unlocking.....	38
5.2.10 Reporting.....	39
Chap 6.0 Troubleshooting.....	41

1.0 Introduction

DataWorx WinPLC provides an easy and inexpensive way to collect data from your WinPLCs. The DataWorx Server stores the information onto your PC into either a comma or tab delimited text file(s). These files can be created on a daily, monthly or yearly basis. The data can be opened in Excel, NotePad or another program of your choice. At this point, you can save the files or print the data.

The DataWorx WinPLC software package is unique in that it offers "report by exception" data collection rather than the typical data collection through polling of WinPLCs. This method allows the WinPLC complete control to store the data to a computer hard drive. Report by exception eases network traffic because, unlike polling, the WinPLC sends information only when needed, rather than continuously.

System Requirements

Hardware Required

- Pentium II with 128 megabytes of ram and 10 megabytes of hard disk space free
- One of the following AutomationDirect WinPLCs:
H2-WPLCX-LV or H2-WPLCX-SD

Software Required

- The Server can run on Windows NT (SP5 or higher), 2000, XP or 7 (32 and 64 bit)
- The Monitor can run on Windows 98, NT, 2000 XP or 7 (32 and 64 bit)
- Internet Explorer 6.0 or higher



Note: DataWorx WinPLC functions as an NT service so you do not have to be logged on for the server to acquire data. Please see the Server section of this manual for more information about the DataWorx WinPLC Server.

2.0 Installation of DataWorx WinPLC

Before you start, ensure that the WinPLC(s) and Server/Monitor computer(s) are connected to the network.

Decide what kind of installation you want:

1. Server and Monitor on Same Computer
 - a. Might be the only option if you have only one computer
 - b. Even if you plan on hosting the Server and Monitor on different computers, you can install both the Server and Monitor on the Server computer for quick installation and configuration
2. Server and Monitor on Different Computers
 - a. Ideal when the physical location of the Server is not easily accessible
 - b. Must note the IP Address or name of the Server

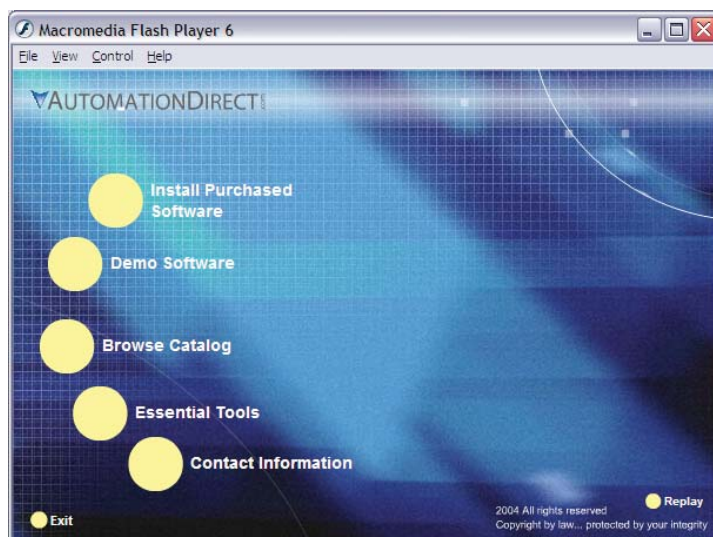
DataWorx WinPLC software is available on the AutomationDirect Product Showcase CD. To install DataWorx WinPLC, insert the AutomationDirect CD into your PC's CD drive. The CD should start automatically and open the installation window shown below.

Note:

If the Automation Direct CD does not start automatically, go to your Windows **START** button, select **RUN**, and type:

E:\setup.exe

Change the letter "E" to correspond to the letter for your CD drive. Then click **OK** and the program will start.

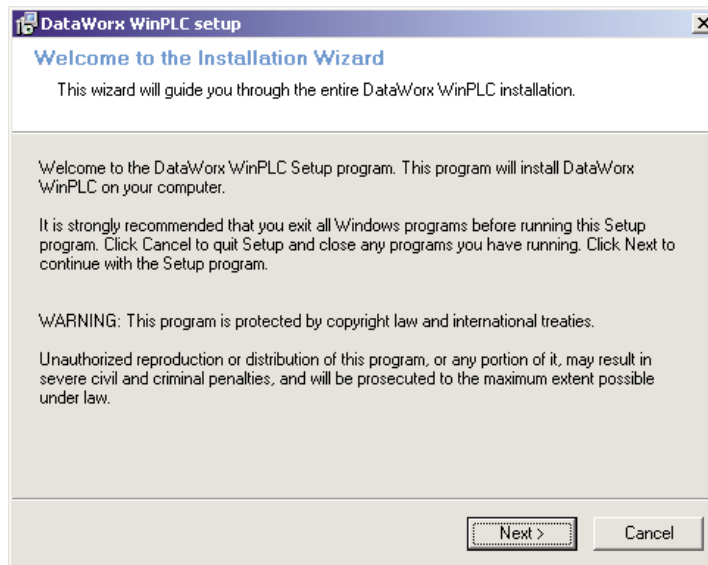


The AutomationDirect installation window will display all software options available on this CD. To install DataWorx WinPLC select the **INSTALL PURCHASED SOFTWARE** option. This selection opens the Product Key window shown below.

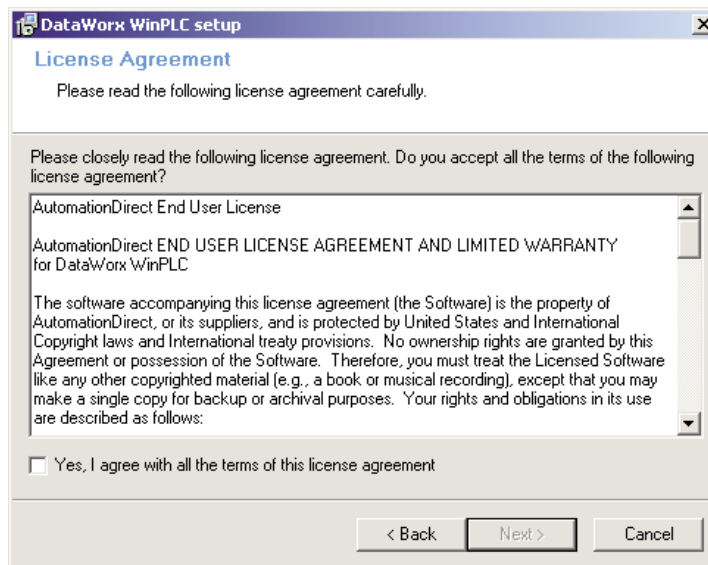


In the given field, enter the Product Key, located on the back cover of your CD case. This software package is protected by the Product Key. Only licensed users that have this key may install the software. After entering the Product Key, click **OK**.

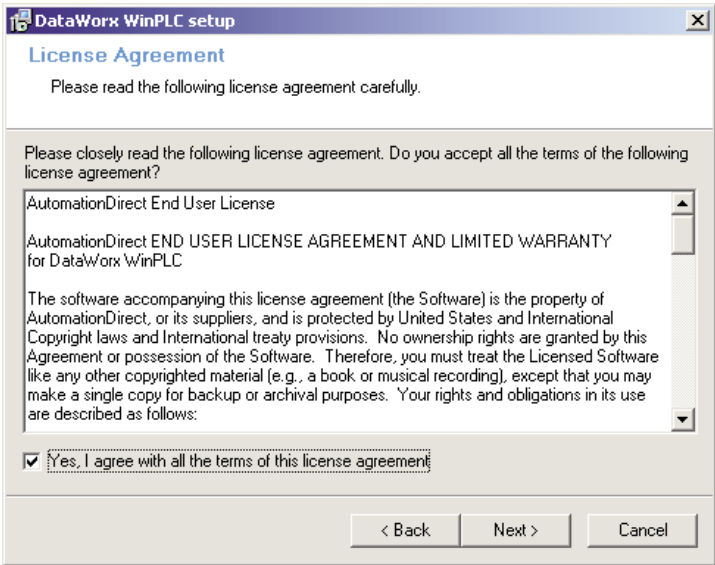
Start the installation program and click NEXT.



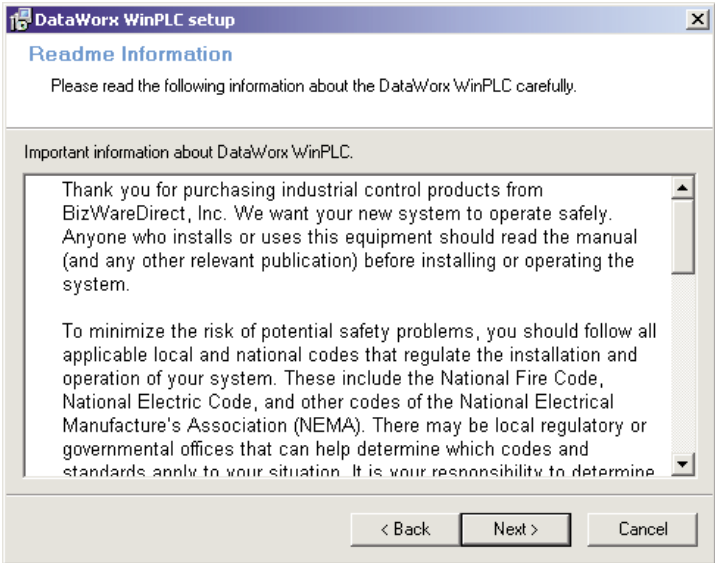
Read and make sure you understand the license agreement.



After reading and understanding the license agreement check the box next to the statement, "Yes, I agree with the terms of this license agreement." Click NEXT.

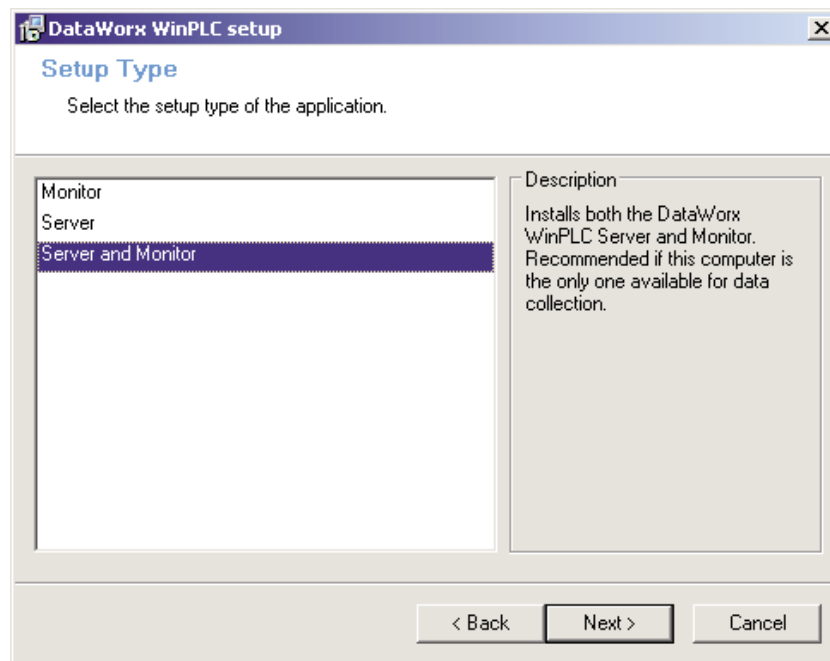


The next screen contains important readme information that may be pertinent to you. After reading this, click **NEXT**.



DataWorx WinPLC

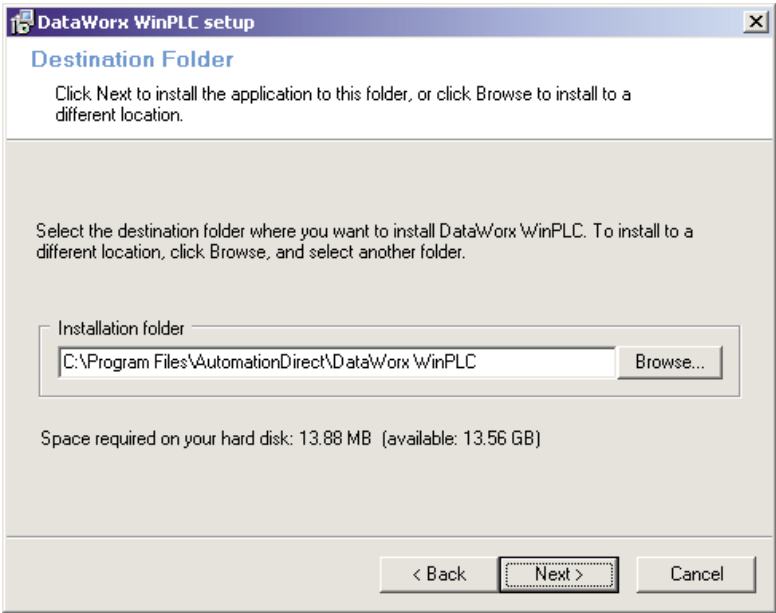
You will now be prompted for the setup type. There are three different types: Monitor, Server, and Server and Monitor. If you select a type from this list, a description of that type will appear on the right hand side, labeled "Description."



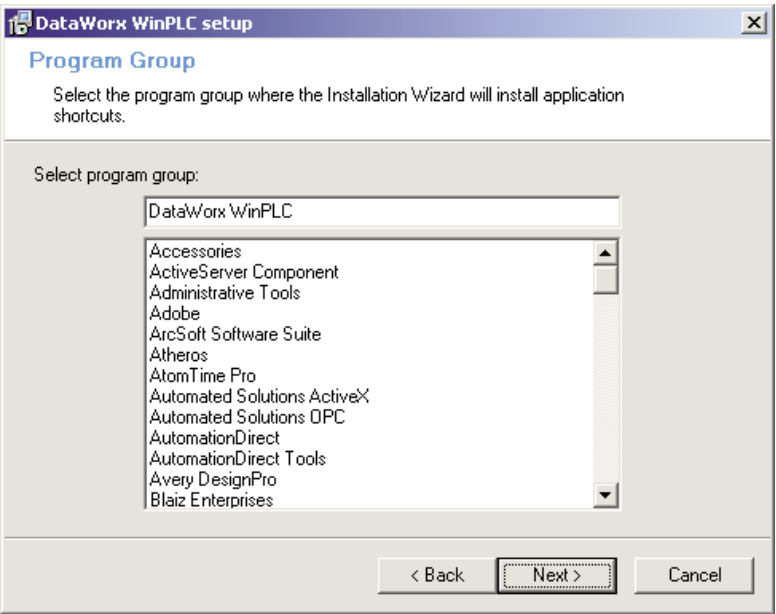
After you have determined which type of setup you want click **NEXT**, and you will be asked to choose a location in which to save the DataWorx WinPLC files. By default the files will go to:

c:\Program Files\AutomationDirect\DataWorx WinPLC

You can choose an alternative location for the DataWorx WinPLC files by clicking the **BROWSE** button.

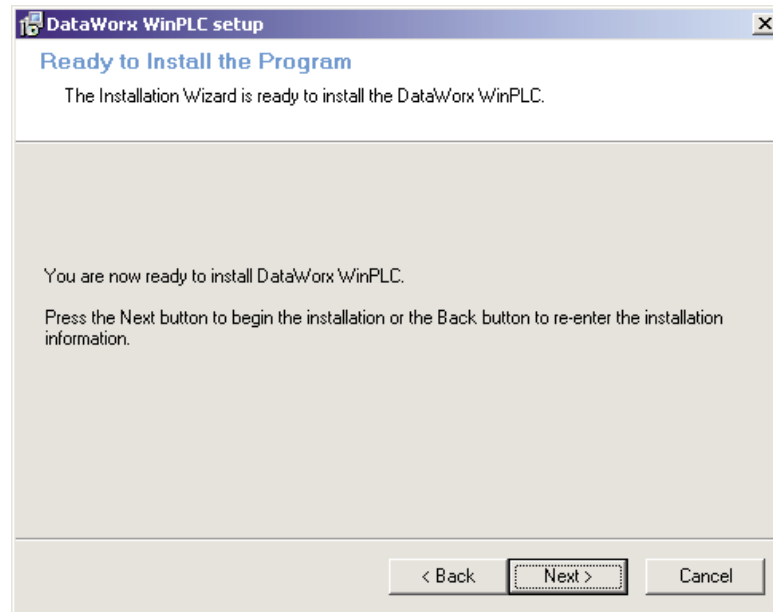


Once satisfied with the location of the files, click NEXT and you will be prompted for the program group. By default, the program group is “DataWorx WinPLC.” This program group can be changed by entering a new name into the textbox.

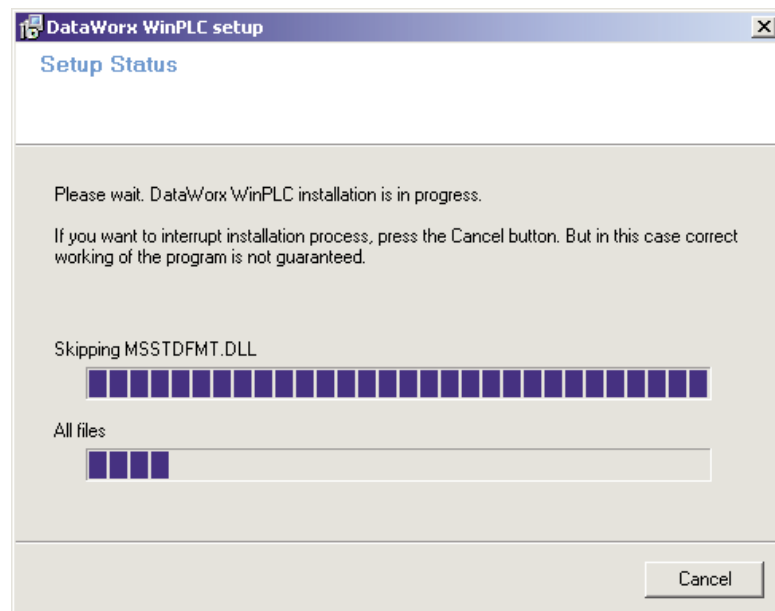


DataWorx WinPLC

Click **NEXT**. You will be prompted to begin installation. Click the **BACK** button at any time to review the settings before committing to the installation. Once satisfied with the installation settings, click the **NEXT** button.

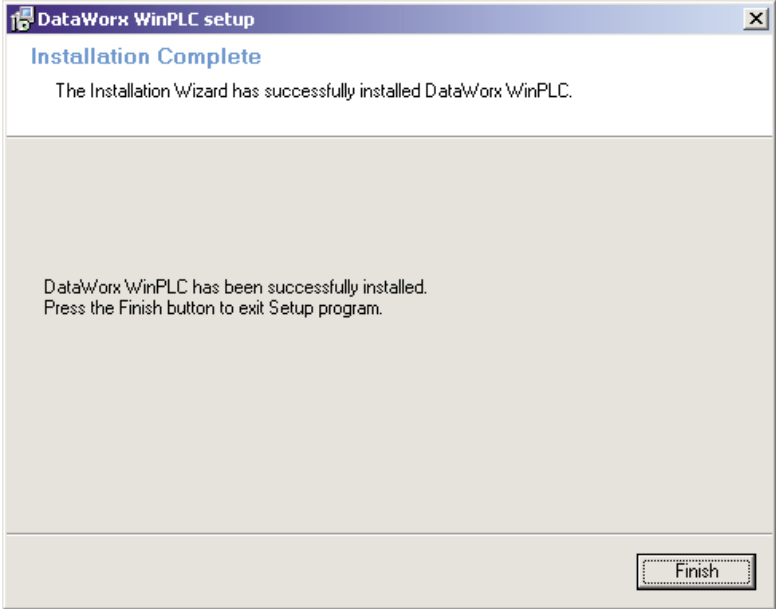


You should now see a meter indicating the installation progress.



Installation can be stopped at any time throughout the process by clicking the **CANCEL** button.

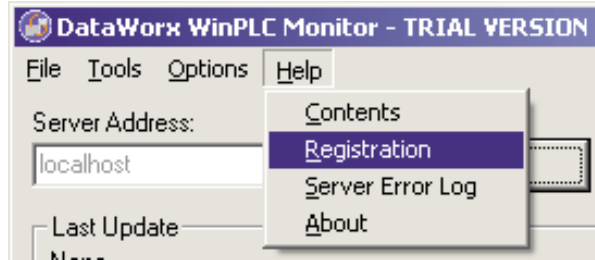
Once installation is complete, you will be notified that DataWorx WinPLC has been successfully installed. Click **FINISH** to exit the installation wizard.



3.0 Registration (required)

Registration Instructions:

- Ensure that the Server is running
- Start the Monitor and connect to the Server
- Go to **HELP** -> **REGISTRATION** in the program's menu

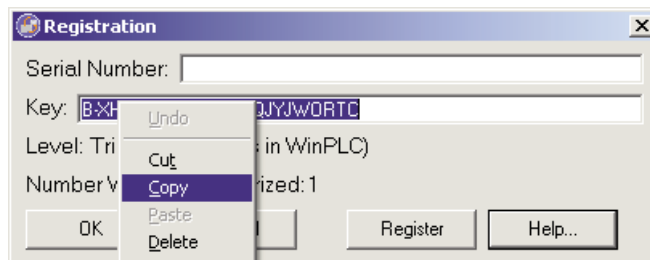


Registration Code:

- Once the Registration window opens, copy the original registration key by highlighting the key, pressing the right mouse button, and selecting **COPY**.



Note: If your PC does not have an active Internet connection, please write down the key provided in the registration window. Then go to a PC with an Internet connection and type your information into the web address as shown below.



- With your browser go to <http://www.bizwaredirect.com/dataworxregistration.aspx> and paste the registration key into the “Key” field on the web form. Also enter the serial number, which is located on the back of the CD cover.

DataWorx Registration Form

Serial Number (From DVD Case)

Key (From DataWorx)



Note: The registration form is case sensitive.

- Click the **CREATE REGISTRATION** button. If all information has been entered correctly, a new unique key should be assigned to you.

DataWorx Registration Form

Serial Number (From DVD Case)

Key (From DataWorx)

How did you **first** hear about BizWareDirect?

Please enter additional information below so we can provide more efficient technical support and alert you of product upgrades. Information submitted is for our internal purposes only and will not be shared with outside parties.

Name:

Company Name:

Address:

Address (Line 2):

City:

State:

Postal/Zip code:

Country (if other than U.S.):

Telephone:

Fax:

E-mail Address:

Purchased From:

Registration Code:

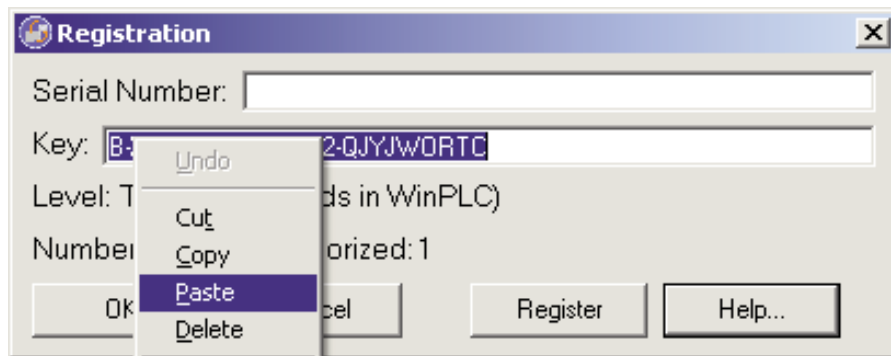
Found registration for 3 device(s).

Your assigned key

Thank you for registering!

DataWorx WinPLC

- Copy the assigned key by highlighting it, pressing the right mouse button and selecting **COPY**. Now, go back to the DataWorx Monitor Registration screen (**HELP** -> **REGISTRATION** in the program's menu). Paste the newly assigned registration key over the original key by highlighting the old key code, pressing the right mouse button and selecting **PASTE**.



Click the **REGISTER** button. A success message and the registration window will show your registration status.



- Click **OK**.

4.0 Think & Do

In order for DataWorx WinPLC to receive data from the WinPLC, it is necessary to configure the WinPLC Think & Do project to send network commands to DataWorx WinPLC. The following are instructions for configuration:

(For Think & Do Version 5.4)



NOTE: The following screen shots are for Think & Do Version 5.4. If you are using another version, the screens may be slightly different, but the underlying functionality will remain the same.

In the project center click on the IOView icon or go to menu TOOLS -> IOView

In I/O View

go to menu DRIVERS -> ADD...

The following prompt for the I/O driver will appear.



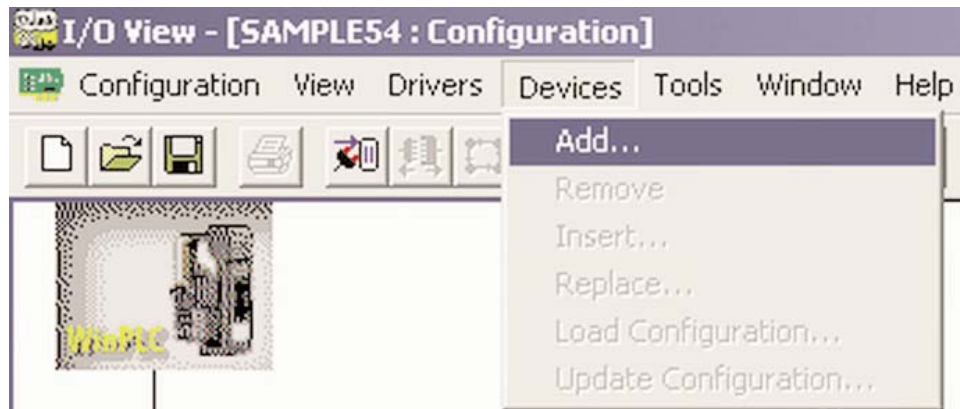
Select PEER TO PEER TAG LINK DRIVER



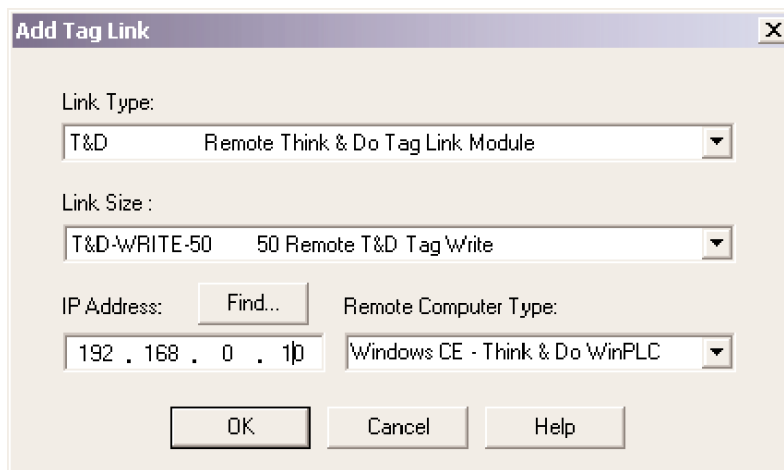
DataWorx WinPLC

The next step is to add a device for this driver. Note that even though a physical device is not being added, a virtual device will be added that sends network messages to DataWorx WinPLC.

Go to menu DEVICES -> ADD



The following screen will appear.



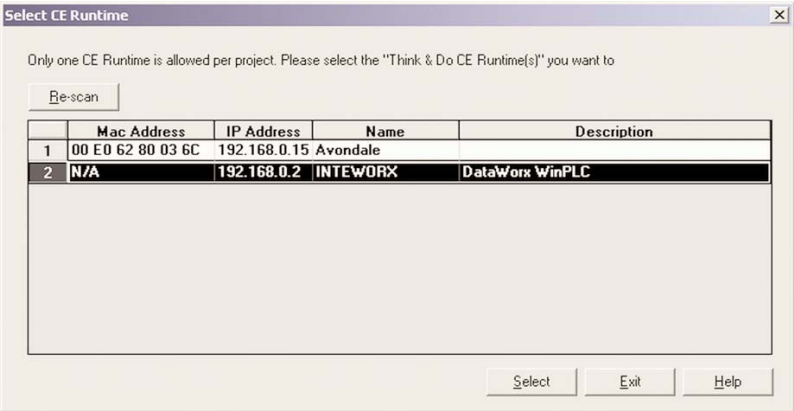
Select **T&D-WRITE-50 50 Remote T&D Tag Write** for the Link Size.

For the IP Address field, enter the IP address of the **DataWorx WinPLC host computer**.



NOTE: The DataWorx WinPLC host computer **MUST** have a static IP address configuration. If the server uses DHCP then results will be unpredictable.

Click the FIND button and this window will appear.

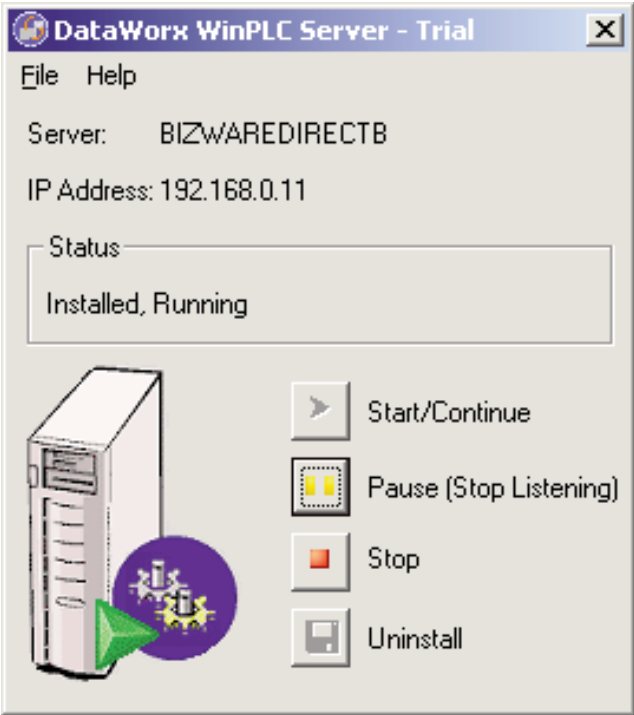


Select the **DataWorx WinPLC** item.

You can view the DataWorx WinPLC server IP address from the server window by following these steps:

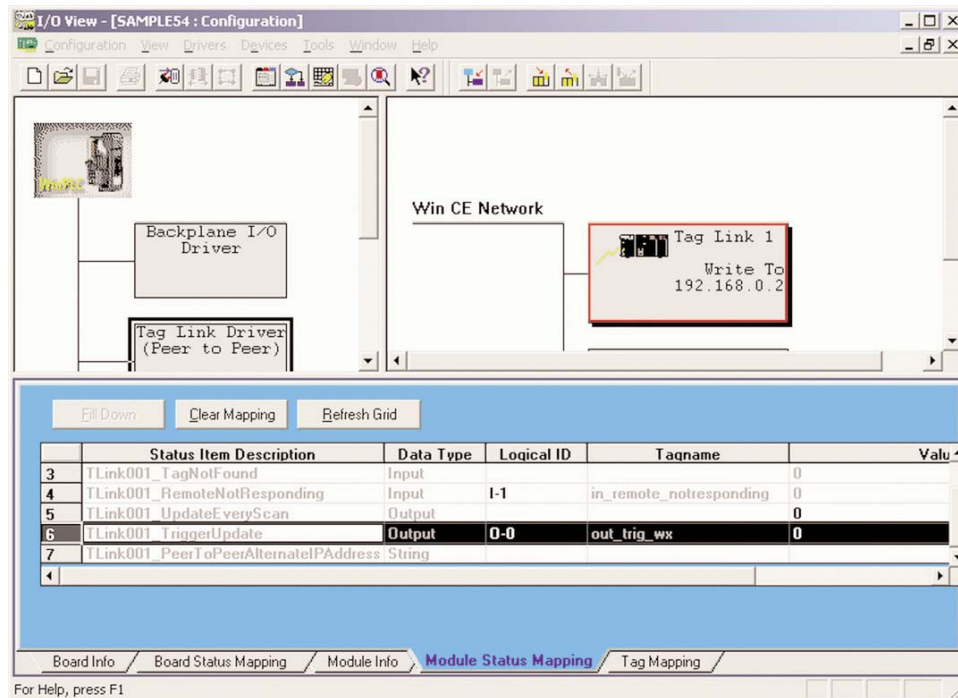
Go to **START** button -> **AutomationDirect** -> **DataWorx WinPLC** -> **DataWorx WinPLC Server**

The server address will be indicated by the IP Address: label like in the following screen.



DataWorx WinPLC

Once the parameters are established, the user needs to establish a trigger so that messages can be sent to DataWorx WinPLC whenever desired. In the I/O View screen select the **Tag Link** driver and go to the **Module Status Mapping** tab:



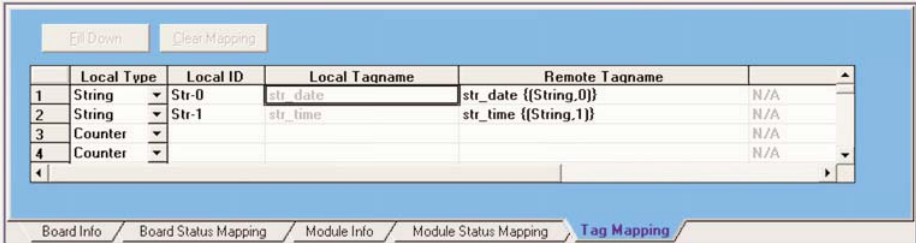
There is a TRIGGER UPDATE item, as is shown in this screen.

Status Item	Description	Data Type	Logical ID	Tagname	Value
3	TLink001_TagNotFound	Input			0
4	TLink001_RemoteNotResponding	Input	I-1	in_remote_notresponding	0
5	TLink001_UpdateEveryScan	Output			0
6	TLink001_TriggerUpdate	Output	0-0	out_trig_wx	0
7	TLink001_PeerToPeerAlternateIPAddress	String			

Map the TriggerUpdate to an output tag of your choice.

Next, decide which data items will need to be sent. Click the TAG MAPPING item, and add the desired tags to send.

Below is an example:

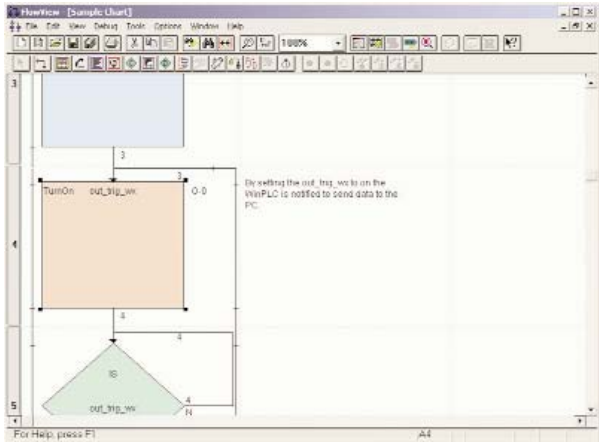


NOTE: that in the Remote Tagname column, data must be entered in this format: tagname [Space] {(Type, Index)}

For example, if a Number tag with index 3 and name "MyNumber" was entered, the following would have to be entered:

MyNumber {(Number, 3)}

Close I/O View and create a Flowchart. In the flowchart, activate sending the tags to DataWorx WinPLC by turning the TriggerUpdate flag on like in the following example:



To see a sample, go to:
START -> Program Files -> AutomationDirect -> DataWorx WinPLC -> Samples -> Think & Do 5.4 Sample Project

5.0 DataWorx WinPLC

5.1 Server

Overview

The DataWorx WinPLC Server's primary function involves listening to WinPLC(s) and recording the data into text files in the format specified by the user.

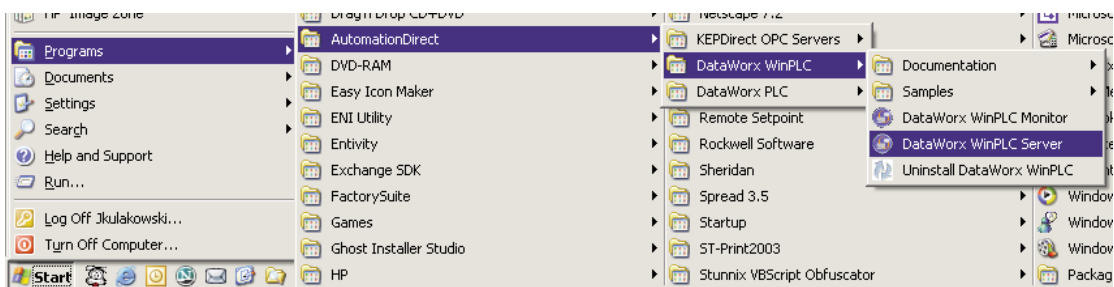
The format of the text file is set with the DataWorx WinPLC Monitor. For more information on configuring the Server with the Monitor, refer to the “Monitor” section.

5.1.1 Installing

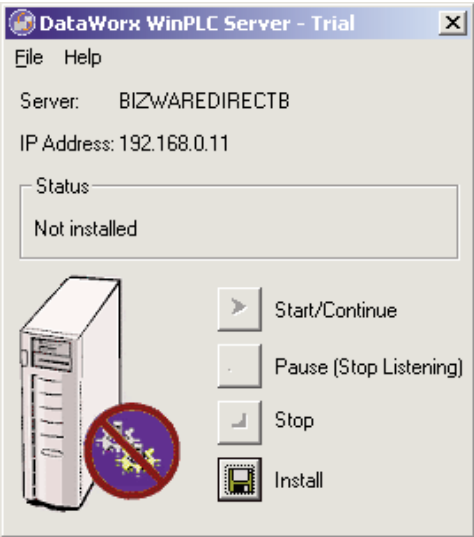
The DataWorx WinPLC Server needs to be installed and running in order to function without user intervention.

To install the Server, go to:

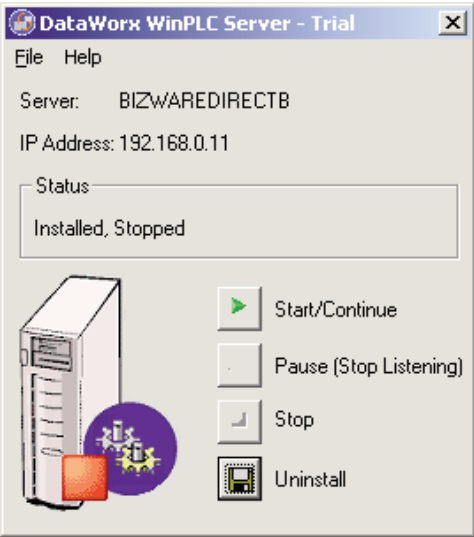
**START Button -> PROGRAMS -> AUTOMATIONDIRECT ->
DATAWORX WINPLC -> DATAWORX WINPLC SERVER**



This window should appear, showing the Server as “Not Installed.”



Click the **INSTALL** button, and the Server status should be shown as “Installed, Stopped.”

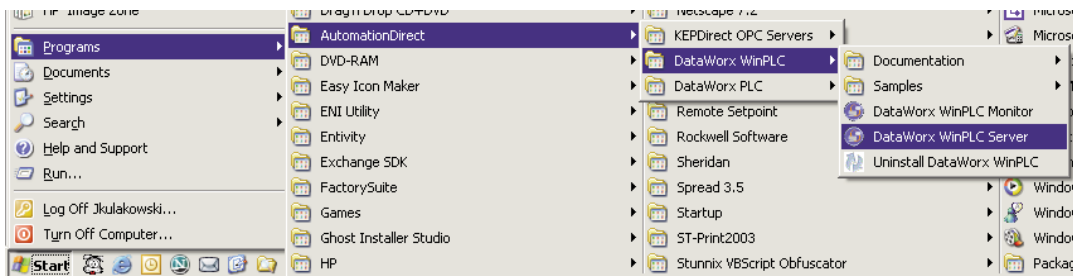


Note: This does not start the DataWorx WinPLC Server. To start the Server refer to the Running section.

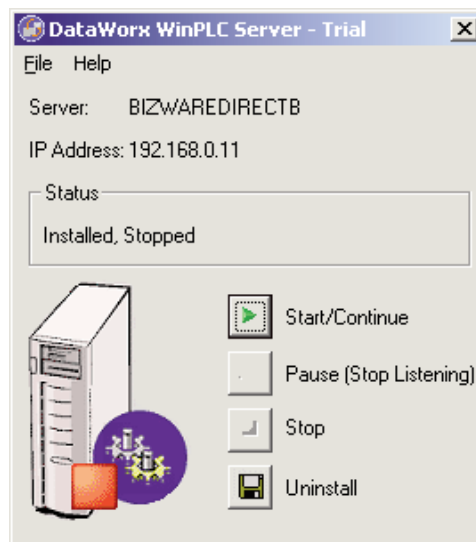
5.1.2 Running

If you do not already have the DataWorx WinPLC Server Window open, go to

**START Button -> PROGRAMS -> AUTOMATIONDIRECT ->
DATAWORX WINPLC -> DATAWORX WINPLC SERVER**



A window will appear, showing the status of the Server as “Installed, Stopped.” Click the **START/CONTINUE** button.



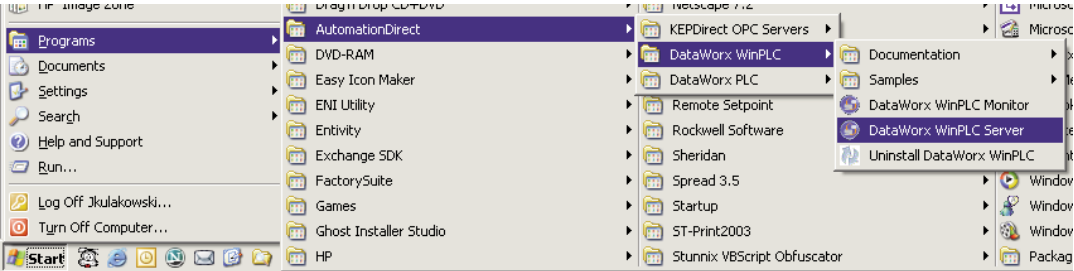
Once a connection has been made, the status will be shown as, “Installed, Running.”

5.1.3 Pausing

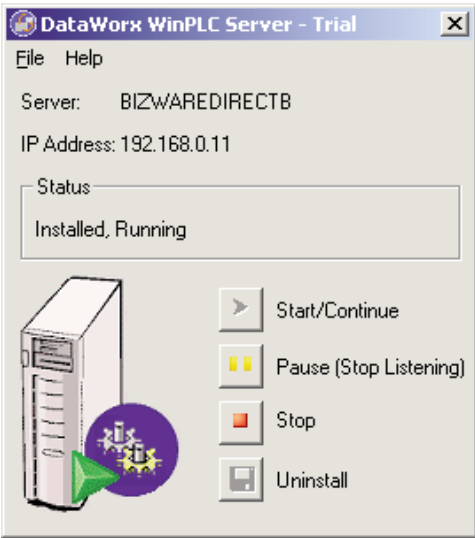
Pausing forces the Server to stop listening for WinPLC input. This can be useful when configuring the Server because it will prevent irrelevant data from being stored.

If you do not already have the DataWorx WinPLC Server Window open, go to

START Button -> PROGRAMS -> AUTOMATIONDIRECT -> DATAWORX WINPLC -> DATAWORX WINPLC SERVER



The following window will appear, showing the Server status as, “Installed, Running.”

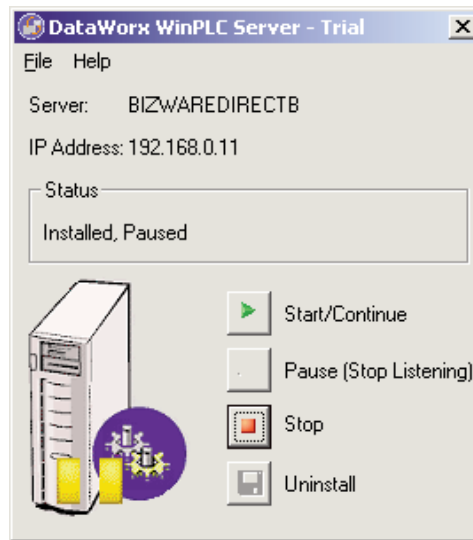


DataWorx WinPLC

Click the **PAUSE (STOP LISTENING)** button, and this window should appear, showing the Server is paused.



Note: This does not stop the DataWorx WinPLC Server. To stop the Server refer to the Stopping section

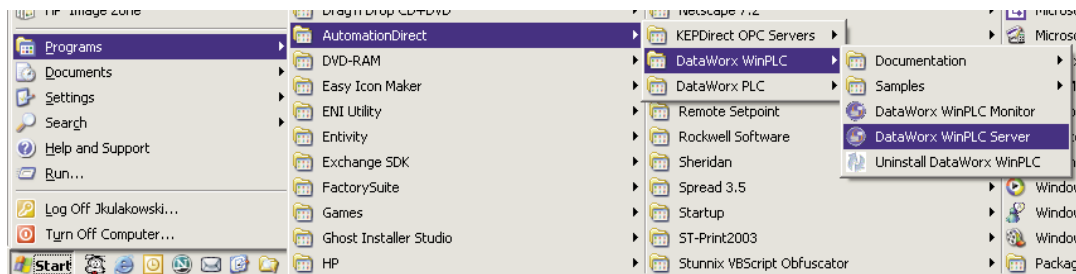


5.1.4 Stopping

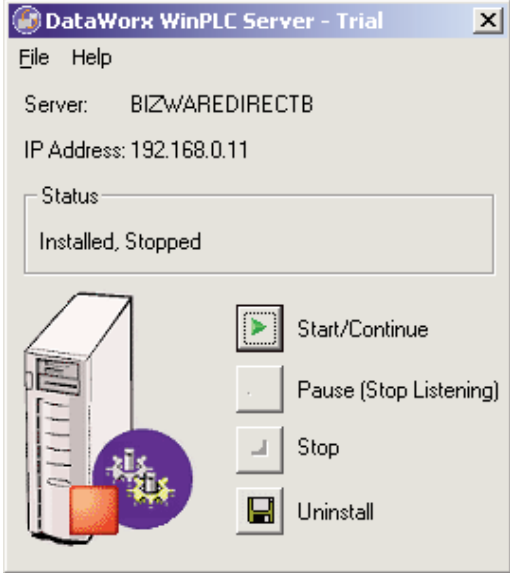
Stopping the DataWorx Server completely stops it from running, instead of just halting its listening state. This feature is useful because the Server must stop before you can uninstall it.

If you do not already have the DataWorx WinPLC Server Window open, go to

START Button -> PROGRAMS -> AUTOMATIONDIRECT -> DATAWORX WINPLC -> DATAWORX WINPLC SERVER



In the DataWorx WinPLC Server Window, click the STOP button, and, this window should appear.

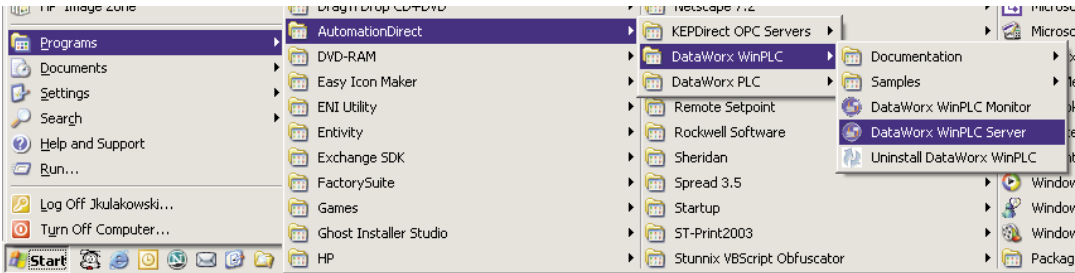


5.1.5 Diagnosing

Diagnosing the DataWorx WinPLC Server allows you to troubleshoot and view real-time events.

If you do not already have the DataWorx WinPLC Server Window open, go to

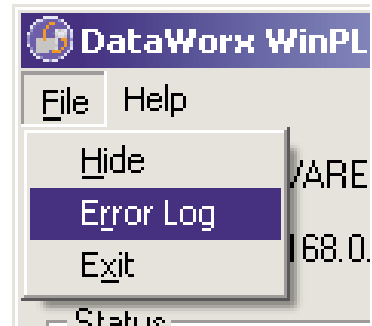
START Button -> PROGRAMS -> AUTOMATIONDIRECT -> DATAWORX WINPLC -> DATAWORX WINPLC SERVER



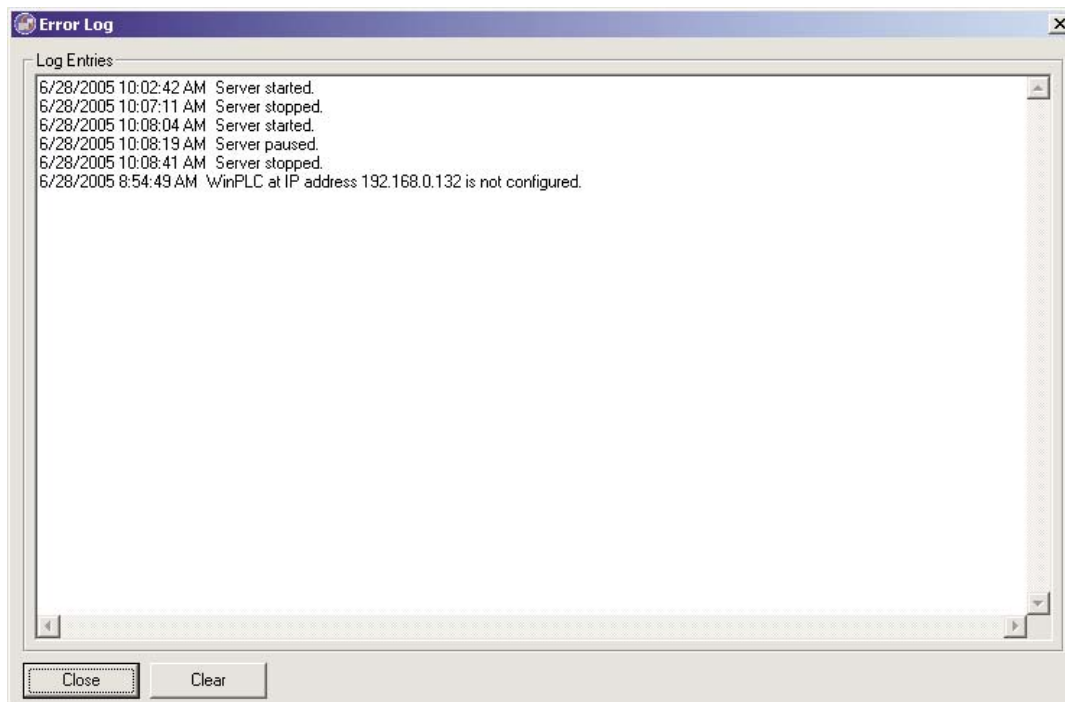
DataWorx WinPLC

In the DataWorx WinPLC Server's main program menu, go to

FILE -> ERROR LOG



An Error Log window like the one below should appear.

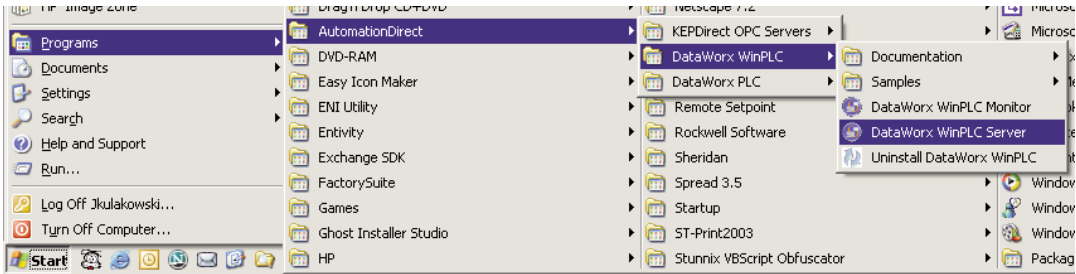


5.1.6 Uninstalling

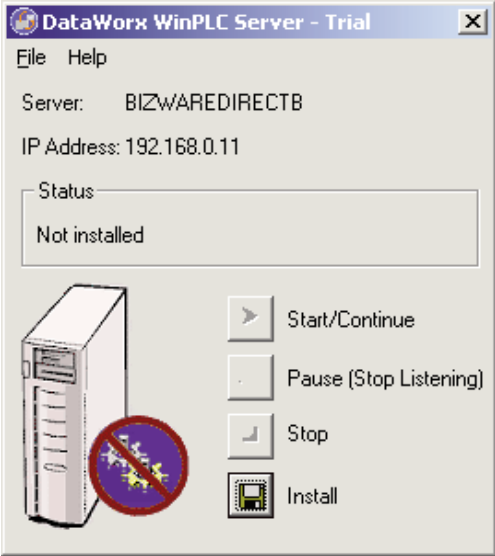
Occasionally, for troubleshooting reasons, you may want to uninstall the Server entirely.

If you do not already have the DataWorx WinPLC Server Window open, go to

START Button -> PROGRAMS -> AUTOMATIONDIRECT -> DATAWORX WINPLC -> DATAWORX WINPLC SERVER



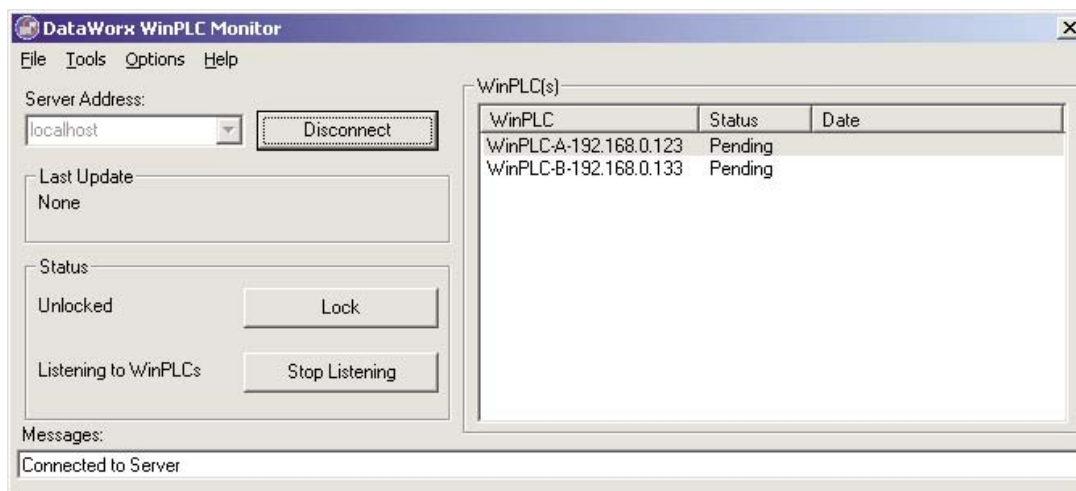
Click the **UNINSTALL** button, and this window should appear.



5.2 Monitor

Overview

The DataWorx WinPLC Monitor allows you to configure the DataWorx WinPLC Server and retrieve its data files over the network. It also enables convenient troubleshooting. Below is the Monitor's main window. Following are explanations of each of its fields.



Server Address: Field where one enters the address of the DataWorx WinPLC Server

Last Update: Denotes the most recent WinPLC input time

Status: Displays the Server's locked and listening state

WinPLC(s): Displays list of currently configured WinPLCs on the Server as well as their status



Note: *WinPLC(s) only lists the last update, you need to check the date to verify if you are receiving information when you expect.*

Messages: Displays updates from both the Server and Monitor

5.2.1 Connecting

This section will provide step-by-step instructions for connecting to a DataWorx PLC Server. This is important because it will allow you to configure the DataWorx Server and retrieve its data files.

In the main screen portion labeled “Server Address,” enter the IP Address.



Note: If you are running the Server and Monitor on the same PC, the Server address will be “Local Host.” If you are running the Server on another PC, enter the IP address from the Server PC.

Note: The PC’s IP address needs to be static not DHCP.

Server Address:
localhost

Press the **CONNECT** button. If the connection has been made, the text on the command button will now read, “Disconnect.”

Server Address:
localhost

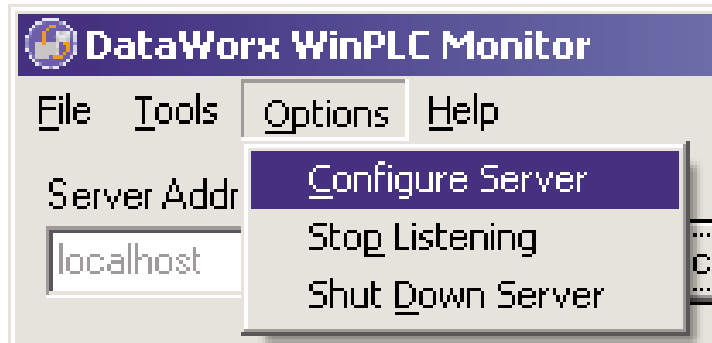
5.2.2 Configuring



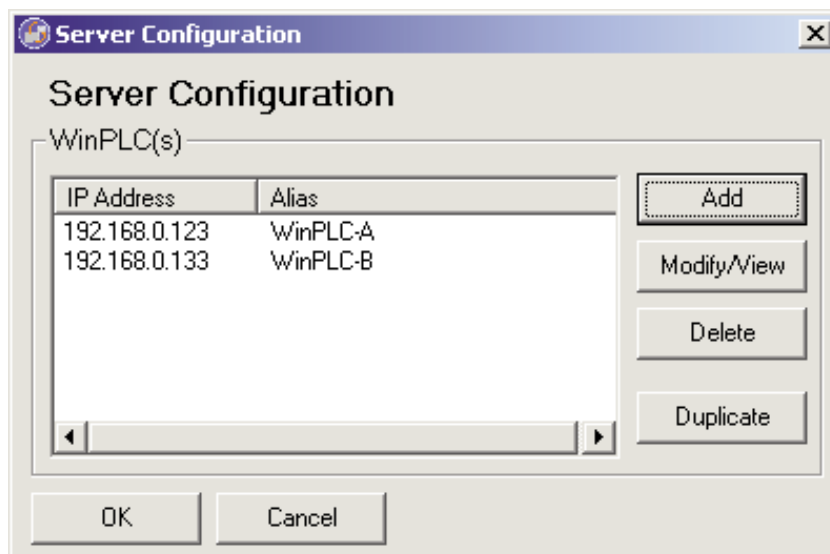
Note: Before you can configure the Server you must connect to it.

Go to menu

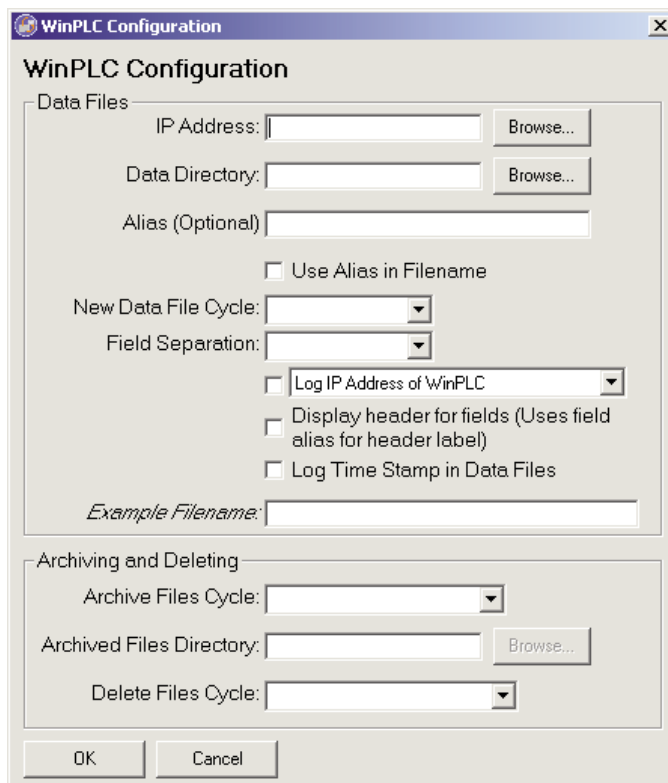
OPTIONS -> CONFIGURE SERVER



You will then see a list of WinPLCs, if any, configured for the Server, as in this example.



To add a WinPLC, click the **ADD** button, and you will see a WinPLC Configuration screen like this one.



The image shows a Windows-style dialog box titled "WinPLC Configuration". It is divided into two main sections: "Data Files" and "Archiving and Deleting".

Data Files Section:

- IP Address:** A text input field with a "Browse..." button to its right.
- Data Directory:** A text input field with a "Browse..." button to its right.
- Alias (Optional):** A text input field.
- Use Alias in Filename**
- New Data File Cycle:** A dropdown menu.
- Field Separation:** A dropdown menu.
- Log IP Address of WinPLC** (with a dropdown menu)
- Display header for fields (Uses field alias for header label)**
- Log Time Stamp in Data Files**
- Example Filename:* A text input field.

Archiving and Deleting Section:

- Archive Files Cycle:** A dropdown menu.
- Archived Files Directory:** A text input field with a "Browse..." button to its right.
- Delete Files Cycle:** A dropdown menu.

At the bottom of the dialog are "OK" and "Cancel" buttons.

Following are explanations of each of the WinPLC Configuration Window's fields:

Alias: Optional name for the WinPLC - can be useful compared to remembering cryptic IP Addresses

Data Directory: Folder on the Server where all the input from the WinPLC will be stored

IP Address: Address of the WinPLC

Use Alias in Filename: If set, the Server will use the alias instead of the IP address for the filename representing the WinPLC data

New Data File Cycle: Specifies how often the Server should create a new file for the WinPLC data. It is also possible to specify to never create a new file with the option "Never (one file)"

DataWorx WinPLC

Fields Separation: The fields received from the WinPLC need to be separated in the text file. Here you can choose to use comma or tabs to separate each field

Log IP Address of WinPLC: Tells the Server to enter the IP Address of the WinPLC as well as the data received from the WinPLC

Display Header for Fields: When set, the Server not only enters the WinPLC data but also the header information labeling each column

Archive Files Cycle: Allows you to create archives of the data files every month or year into .zip files

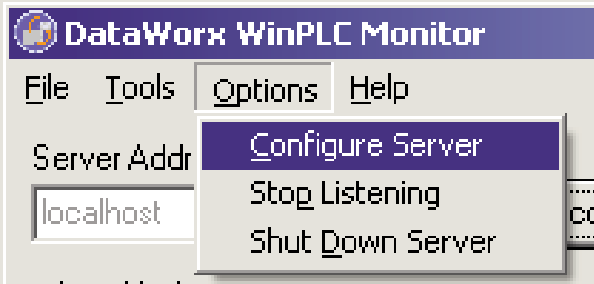
Archived Files Directory: This is the location where the Server will save the archived .zip files

Delete Files Cycle: Allows you to delete the data files every month or year

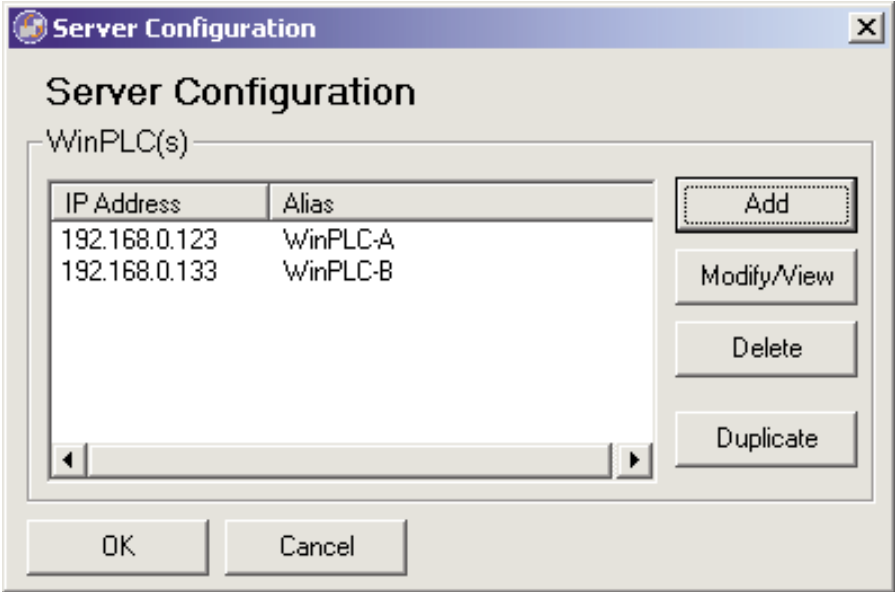
5.2.3 Modifying a WinPLC

Go to menu

OPTIONS -> CONFIGURE SERVER

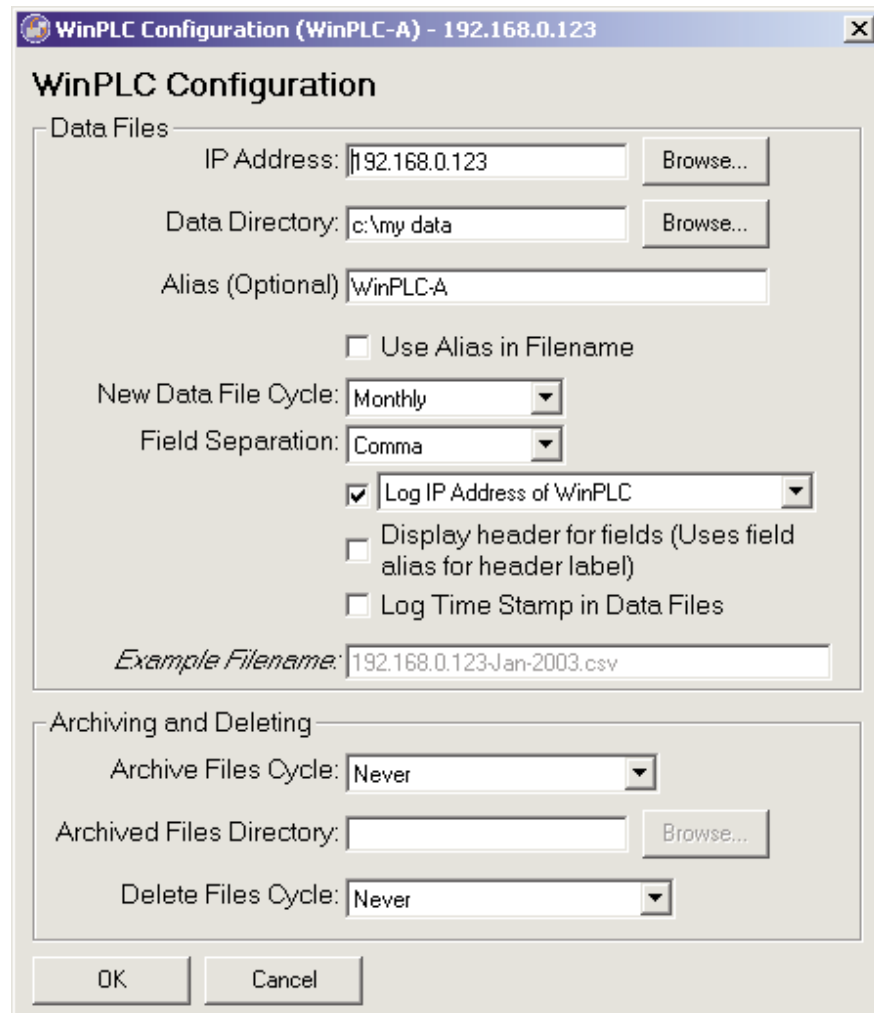


You will then see a list of WinPLCs, if any, configured for the Server:



DataWorx WinPLC

Click the **MODIFY/VIEW** button and you will see a WinPLC Configuration screen, which shows the WinPLC data, as shown in the example below.



The image shows a Windows-style dialog box titled "WinPLC Configuration (WinPLC-A) - 192.168.0.123". The dialog is divided into two main sections: "Data Files" and "Archiving and Deleting".

Data Files Section:

- IP Address: 192.168.0.123 (with a "Browse..." button)
- Data Directory: c:\my data (with a "Browse..." button)
- Alias (Optional): WinPLC-A
- Use Alias in Filename
- New Data File Cycle: Monthly (dropdown menu)
- Field Separation: Comma (dropdown menu)
- Log IP Address of WinPLC (dropdown menu)
- Display header for fields (Uses field alias for header label)
- Log Time Stamp in Data Files
- Example Filename: 192.168.0.123-Jan-2003.csv

Archiving and Deleting Section:

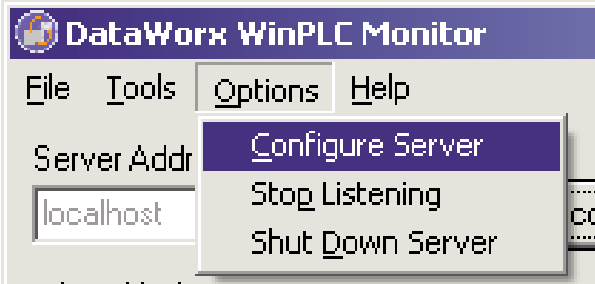
- Archive Files Cycle: Never (dropdown menu)
- Archived Files Directory: (empty text box with a "Browse..." button)
- Delete Files Cycle: Never (dropdown menu)

At the bottom of the dialog are "OK" and "Cancel" buttons.

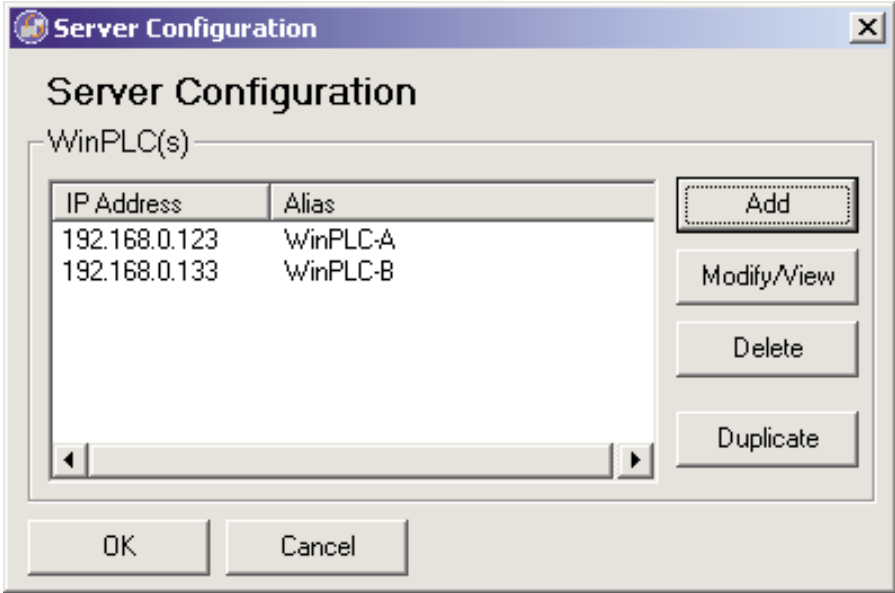
Once you are finished making changes, click **OK** to save or **CANCEL** to discard changes.

5.2.4 Deleting

Go to menu
OPTIONS -> CONFIGURE SERVER



You will then see a list of WinPLCs, if any, configured for the Server.

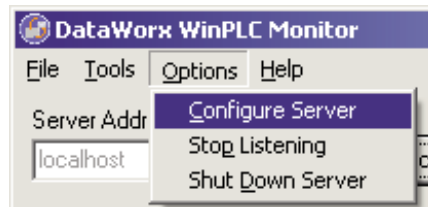


Select the WinPLC you wish to delete and click the DELETE button.

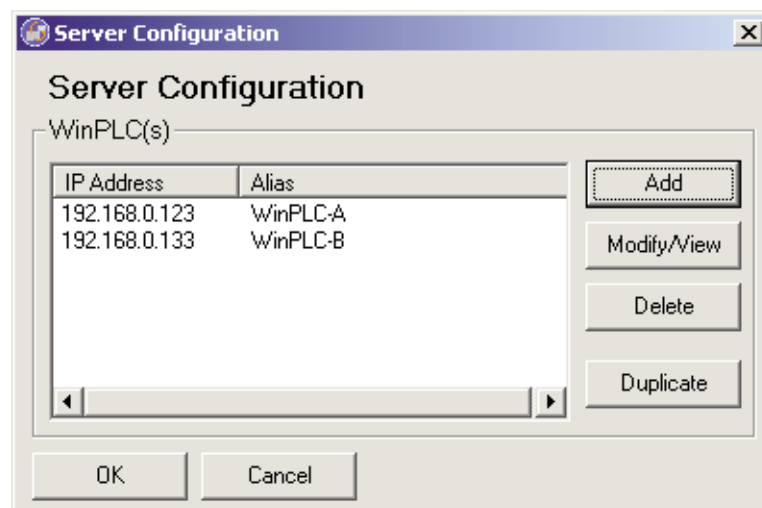
5.2.5 Duplicating

A great time-saving feature for those who have many WinPLCs with similar configurations. You can create one listing and make copies of it. Go to menu

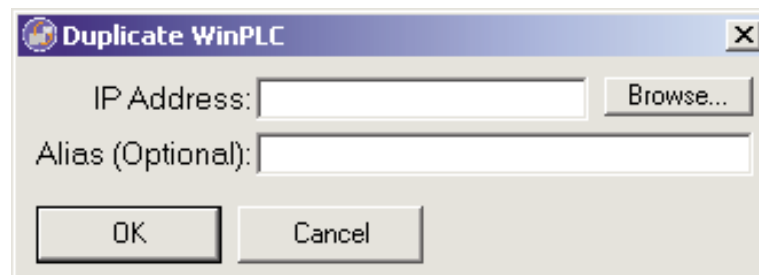
OPTIONS -> CONFIGURE SERVER



You will then see a list of WinPLCs, if any, configured for the Server.



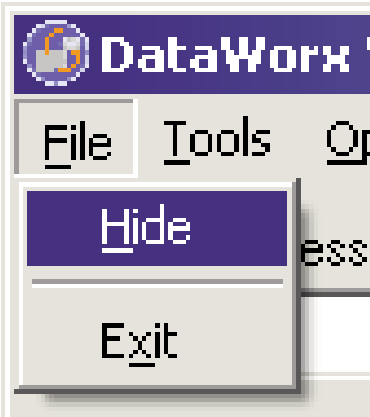
Click the **DUPLICATE** button and you will see the following window asking for the Alias and IP Address. Enter the necessary information and click **OK** to save changes, otherwise click **CANCEL** to discard changes.



5.2.6 Hiding

Hiding is a convenient feature that temporarily places the Monitor out of view for later access. To hide the Monitor, go to menu

FILE -> HIDE



The DataWorx WinPLC icon appears on the task bar.



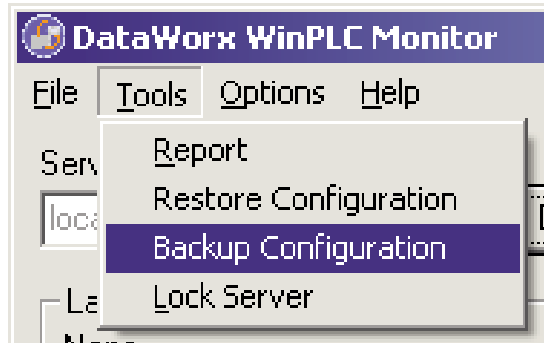
The application can then be restored by right-clicking on the icon and selecting **RESTORE**.



5.2.7 Backing up and Restoring

Backing up the configuration allows you to safely restore all your changes in the event of a hardware failure. To backup configuration, go to menu:

OPTIONS -> BACKUP CONFIGURATION



You will be prompted for a filename. Name the file and click **SAVE**. Make a note of the filename and its location, in case it is needed for a future restoration.

To restore the configuration in the event of a hardware failure, go to menu

OPTIONS -> RESTORE CONFIGURATION

You will be prompted for a filename. Enter the filename you chose during the backup process. Click **OPEN**, and the Server/Monitor should be restored to their original states.

5.2.8 Listening

The DataWorx WinPLC Server maintains "listening" and "not listening" states for WinPLC input. You can change the listening state from the Monitor as well as from the Server program.

Changing the listening state can be useful when in the process of installing new WinPLCs or changing the configuration, because it will prevent the Server from receiving irrelevant data.

To begin receiving data, click the **START LISTENING** button. (Note: If the text on the button reads "Stop Listening," the Server is already listening and receiving WinPLC data. The status of the Server's listening state should be displayed next to the command button.)

Not listening to WinPLCs

Start Listening

When the Server enters its listening state successfully, a "Listening to WinPLCs" status should be displayed and the text on the command button should read "Stop Listening."

Listening to WinPLCs

Stop Listening

To cause the Server to stop listening, click the **STOP LISTENING** button.

Listening to WinPLCs

Stop Listening

When listening stops, a "Not listening to WinPLCs" status will be displayed and the text on the command button will change back to "Start Listening."

Not listening to WinPLCs

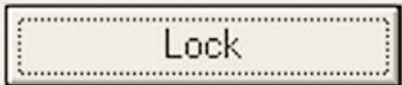
Start Listening

5.2.9 Locking / Unlocking

A useful feature for preventing unwanted WinPLC configurations and Server listen state changes.

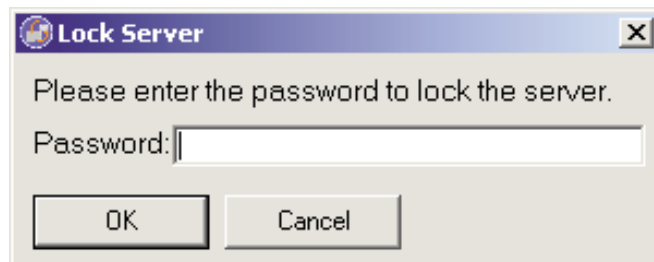
To lock the Server configuration, click the **LOCK** button.

Unlocked




Lock

A screen will appear asking for the lock code. Enter the lock code and click **OK**. Make note of the lock code you have chosen so Server may be unlocked when necessary.



If the Server has been successfully locked, a “Locked” status will be displayed.

Locked



Unlock



Warning: If you forget/lose the lock code you will NOT be able to unlock the Server

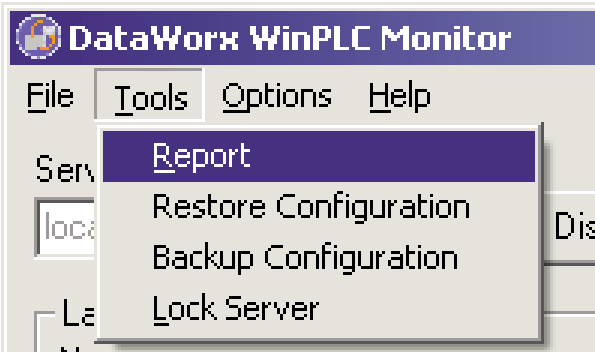
To unlock the Server, click the **UNLOCK** button, enter the lock code, and click **OK**.

5.2.10 Reporting

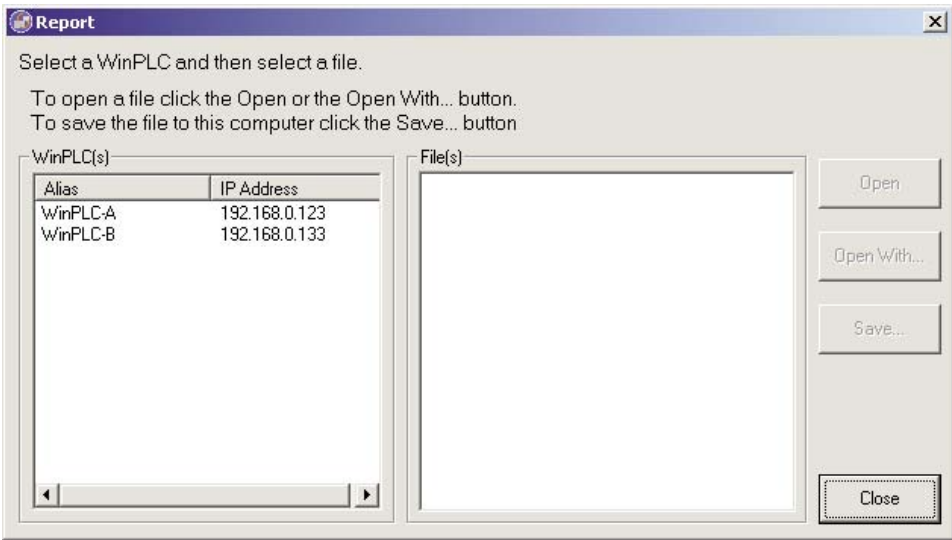
One of the most useful features of the Monitor, reporting allows you to view or save files generated by the Server over a network without having physical access to the Server.

To view the report, go to menu:

TOOLS -> REPORT

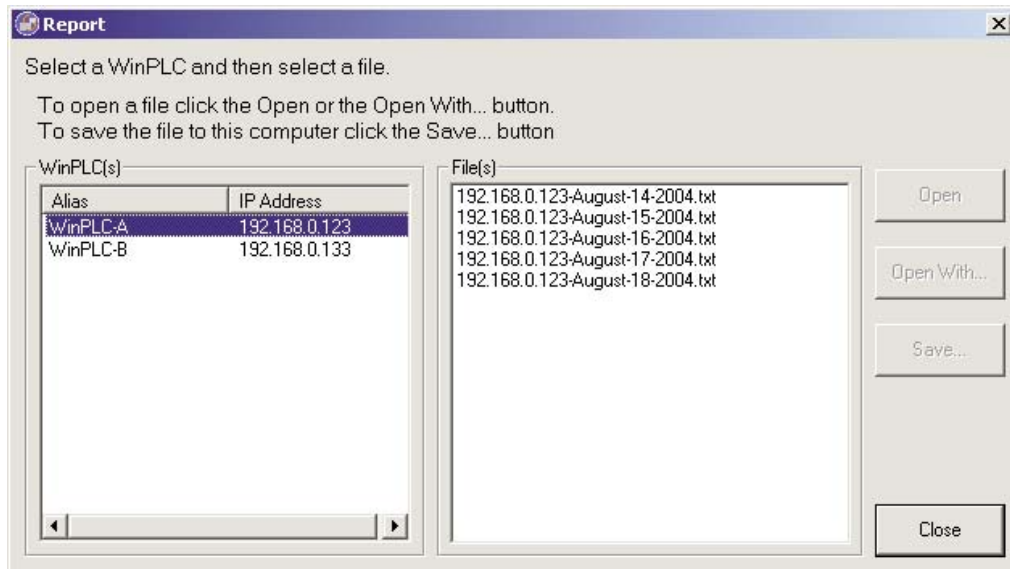


You should see a Report screen like the one shown here.



DataWorx WinPLC

From the list on the left side of the screen, select the WinPLC from which you wish to view data.



Next, select a file from the File(s) list and click either the **OPEN**, **OPEN WITH** or **SAVE** button.

Note the difference between these three options:

OPEN uses the default application to open the file.

OPEN WITH prompts you for the application to open the file with Notepad, Excel, or a program of your choice.

SAVE allows you to place the file in a specified location on your computer or storage device, so it can be opened at a later time.



Note: Do not open the **current** log file outside of DataWorx. If you open the current log file outside of DataWorx, (Example: opening the log file from Excel) it will lock the file and not allow DataWorx to store data to this log file.

6.0 Troubleshooting

Cannot connect to Server

Double check the Server Address - it might be incorrect
Verify that the Server and Monitor computers are online and can access network facilities such as e-mail and Internet

Ensure that cables are connected

Verify that computers can access Internet by going to a test web site such as www.yahoo.com

Make sure the PC has a static IP address.

Server is running but not receiving WinPLC data

Verify that the Server is running, not paused

If Server is paused, click the RUN button

If Server is running, verify that the PLC is correctly configured to send the specified data to the Server

WinPLC is sending data, but DataWorx is not receiving updates

Verify that Server is in "listening" mode. The Server status should state, "Listening to WinPLC(s)"

If not in listening mode, click the START LISTENING button

Verify that the WinPLC is configured to send data to the Server

Go to Server Configuration and select the WinPLC in question
Click the CONFIGURE PLC MEMORY button and enter the WX start location and the module ID, if blank

Click AUTOCONFIGURE or manually enter the values as they are displayed

Click OK and confirm that no error messages are displayed

