

## 5.0 DataWorx WinPLC

### 5.1 Server

#### Overview

The DataWorx WinPLC Server's primary function involves listening to WinPLC(s) and recording the data into text files in the format specified by the user.

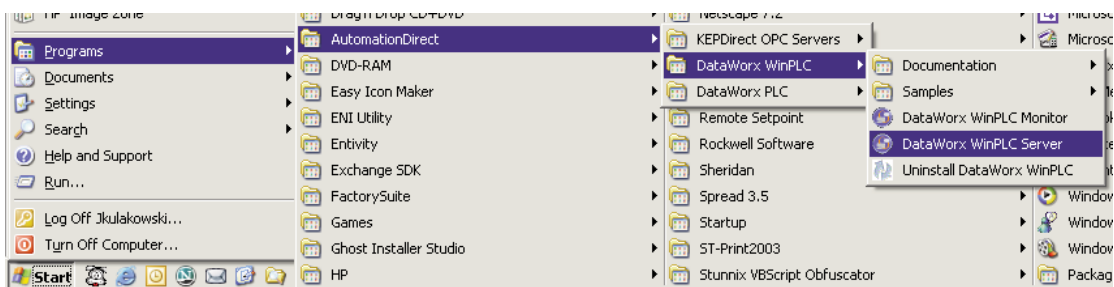
The format of the text file is set with the DataWorx WinPLC Monitor. For more information on configuring the Server with the Monitor, refer to the “Monitor” section.

#### 5.1.1 Installing

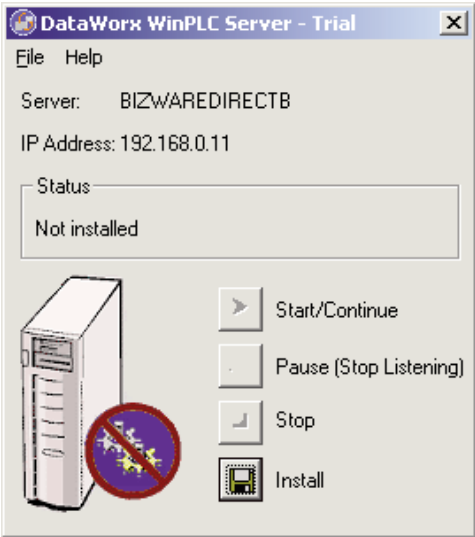
The DataWorx WinPLC Server needs to be installed and running in order to function without user intervention.

To install the Server, go to:

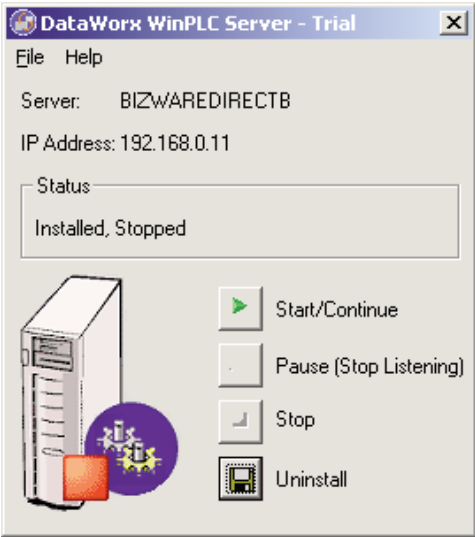
**START Button -> PROGRAMS -> AUTOMATIONDIRECT ->  
DATAWORX WINPLC -> DATAWORX WINPLC SERVER**



This window should appear, showing the Server as “Not Installed.”



Click the **INSTALL** button, and the Server status should be shown as “Installed, Stopped.”

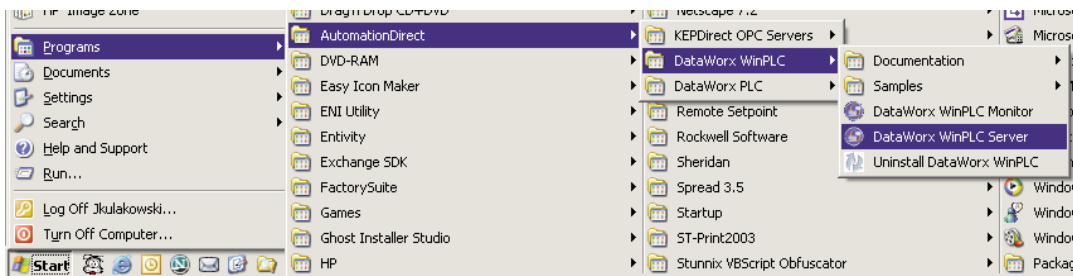


**Note:** This does not start the DataWorx WinPLC Server. To start the Server refer to the Running section.

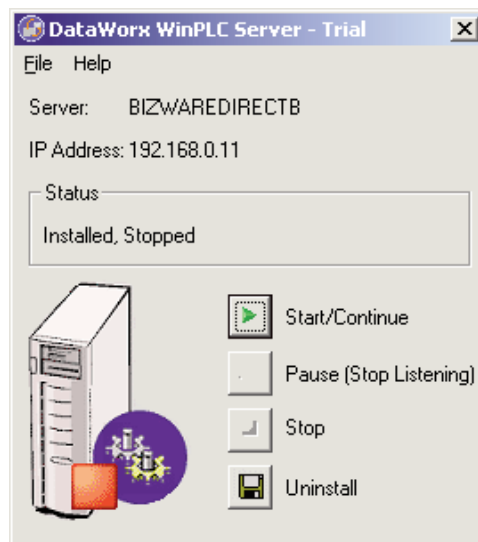
## 5.1.2 Running

If you do not already have the DataWorx WinPLC Server Window open, go to

**START Button -> PROGRAMS -> AUTOMATIONDIRECT ->  
DATAWORX WINPLC -> DATAWORX WINPLC SERVER**



A window will appear, showing the status of the Server as “Installed, Stopped.” Click the **START/CONTINUE** button.



Once a connection has been made, the status will be shown as, “Installed, Running.”

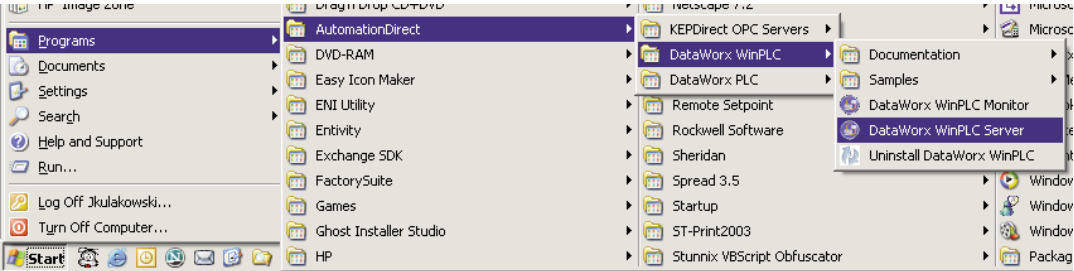
---

### 5.1.3 Pausing

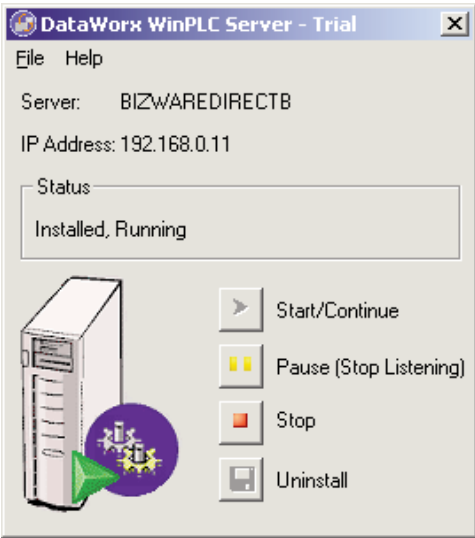
Pausing forces the Server to stop listening for WinPLC input. This can be useful when configuring the Server because it will prevent irrelevant data from being stored.

If you do not already have the DataWorx WinPLC Server Window open, go to

**START Button -> PROGRAMS -> AUTOMATIONDIRECT -> DATAWORX WINPLC -> DATAWORX WINPLC SERVER**



The following window will appear, showing the Server status as, “Installed, Running.”



# DataWorx WinPLC

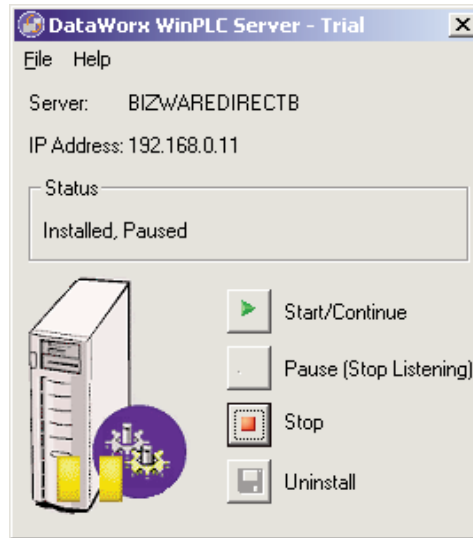
---

Click the **PAUSE (STOP LISTENING)** button, and this window should appear, showing the Server is paused.



**Note:** This does not stop the DataWorx WinPLC Server. To stop the Server refer to the Stopping section

---

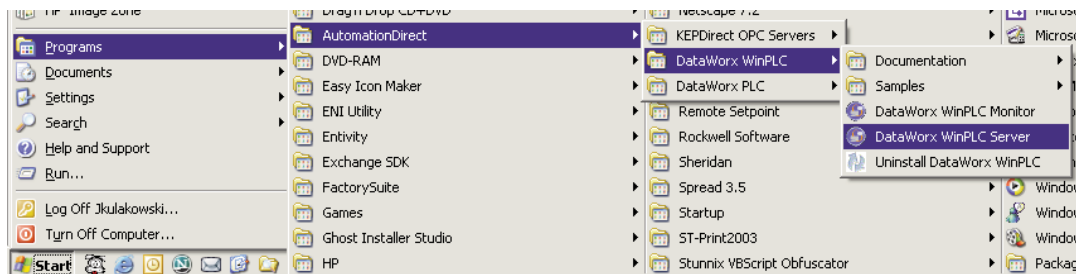


## 5.1.4 Stopping

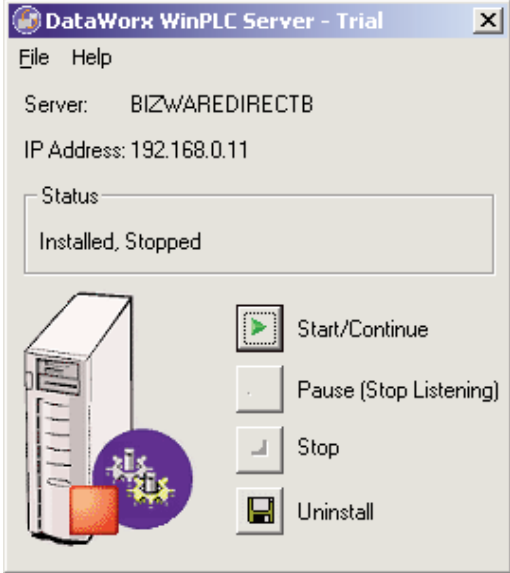
Stopping the DataWorx Server completely stops it from running, instead of just halting its listening state. This feature is useful because the Server must stop before you can uninstall it.

If you do not already have the DataWorx WinPLC Server Window open, go to

**START Button -> PROGRAMS -> AUTOMATIONDIRECT -> DATAWORX WINPLC -> DATAWORX WINPLC SERVER**



In the DataWorx WinPLC Server Window, click the STOP button, and, this window should appear.

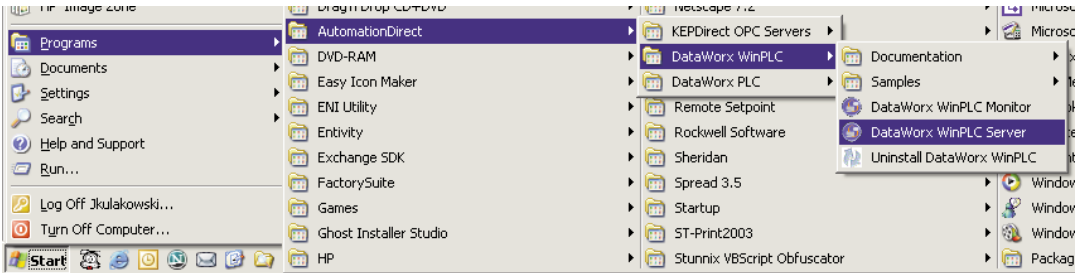


### 5.1.5 Diagnosing

Diagnosing the DataWorx WinPLC Server allows you to troubleshoot and view real-time events.

If you do not already have the DataWorx WinPLC Server Window open, go to

**START Button -> PROGRAMS -> AUTOMATIONDIRECT -> DATAWORX WINPLC -> DATAWORX WINPLC SERVER**

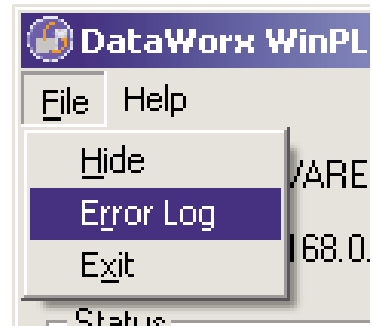


## DataWorx WinPLC

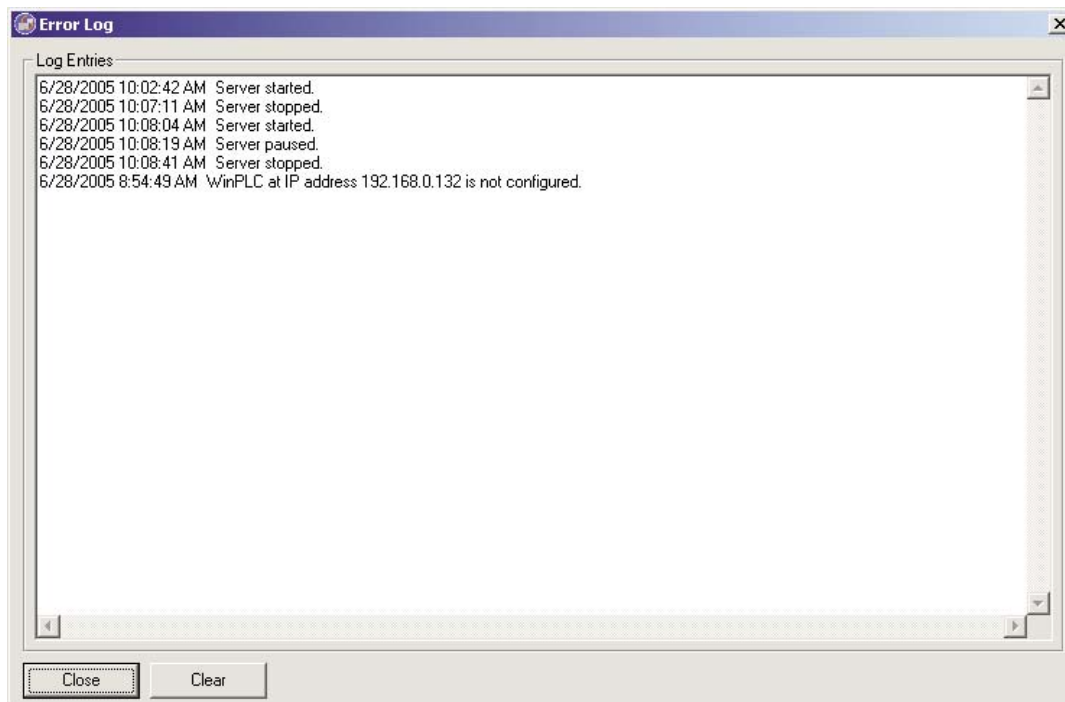
---

In the DataWorx WinPLC Server's main program menu, go to

**FILE -> ERROR LOG**



An Error Log window like the one below should appear.

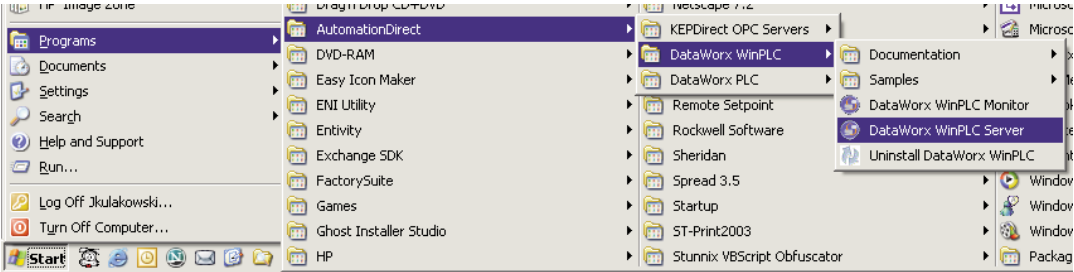


# 5.1.6 Uninstalling

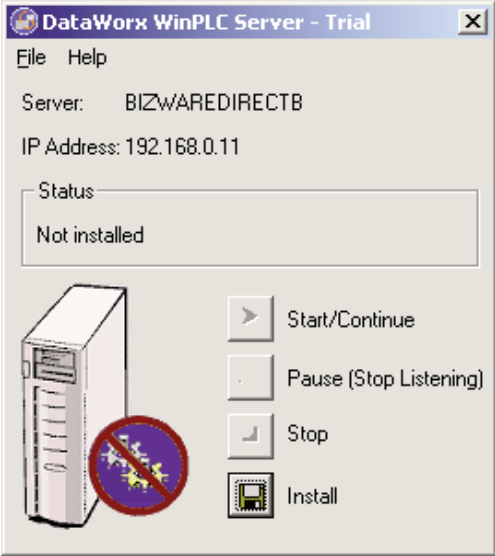
Occasionally, for troubleshooting reasons, you may want to uninstall the Server entirely.

If you do not already have the DataWorx WinPLC Server Window open, go to

**START Button -> PROGRAMS -> AUTOMATIONDIRECT -> DATAWORX WINPLC -> DATAWORX WINPLC SERVER**



Click the UNINSTALL button, and this window should appear.

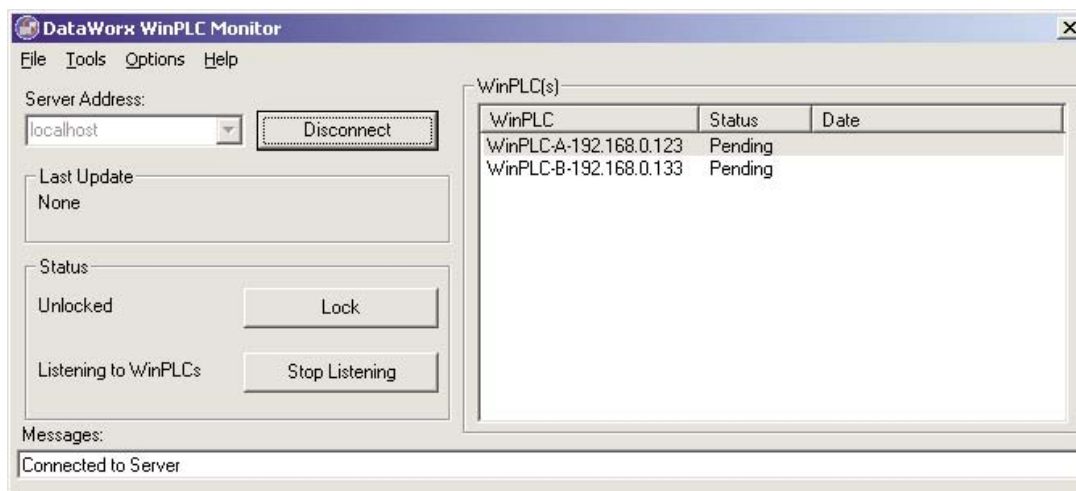




## 5.2 Monitor

### Overview

The DataWorx WinPLC Monitor allows you to configure the DataWorx WinPLC Server and retrieve its data files over the network. It also enables convenient troubleshooting. Below is the Monitor's main window. Following are explanations of each of its fields.



**Server Address:** Field where one enters the address of the DataWorx WinPLC Server

**Last Update:** Denotes the most recent WinPLC input time

**Status:** Displays the Server's locked and listening state

**WinPLC(s):** Displays list of currently configured WinPLCs on the Server as well as their status



**Note:** *WinPLC(s) only lists the last update, you need to check the date to verify if you are receiving information when you expect.*

**Messages:** Displays updates from both the Server and Monitor

---

## 5.2.1 Connecting

This section will provide step-by-step instructions for connecting to a DataWorx PLC Server. This is important because it will allow you to configure the DataWorx Server and retrieve its data files.

In the main screen portion labeled “Server Address,” enter the IP Address.



---

**Note:** If you are running the Server and Monitor on the same PC, the Server address will be “Local Host.” If you are running the Server on another PC, enter the IP address from the Server PC.

---

**Note:** The PC’s IP address needs to be static not DHCP.

---

Server Address:  
localhost

Press the **CONNECT** button. If the connection has been made, the text on the command button will now read, “Disconnect.”

Server Address:  
localhost

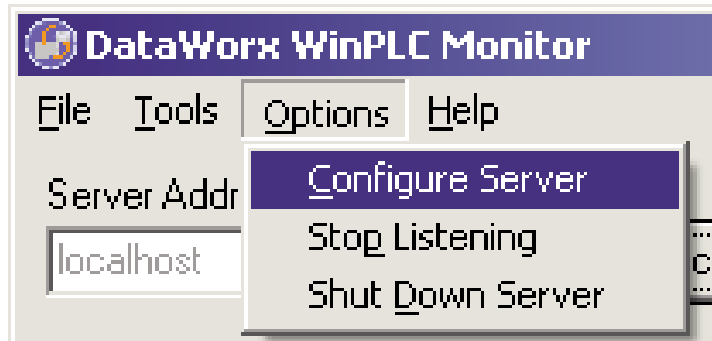
## 5.2.2 Configuring



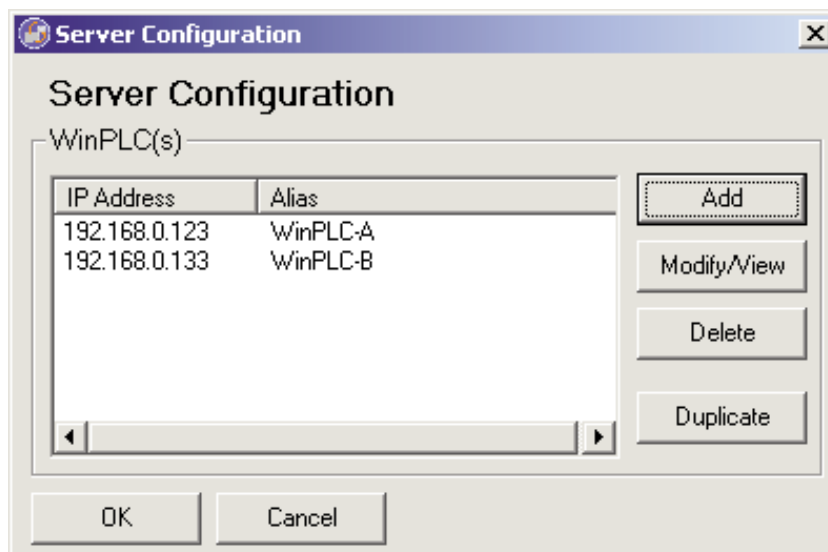
**Note:** Before you can configure the Server you must connect to it.

Go to menu

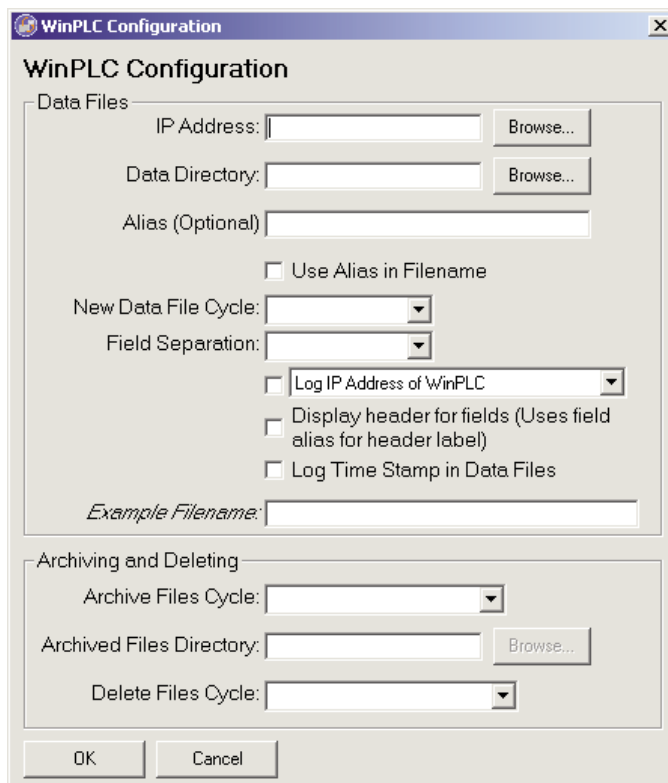
OPTIONS -> CONFIGURE SERVER



You will then see a list of WinPLCs, if any, configured for the Server, as in this example.



To add a WinPLC, click the **ADD** button, and you will see a WinPLC Configuration screen like this one.



The image shows a Windows-style dialog box titled "WinPLC Configuration". It is divided into two main sections: "Data Files" and "Archiving and Deleting".

**Data Files Section:**

- IP Address:** A text input field with a "Browse..." button to its right.
- Data Directory:** A text input field with a "Browse..." button to its right.
- Alias (Optional):** A text input field.
- Use Alias in Filename**
- New Data File Cycle:** A dropdown menu.
- Field Separation:** A dropdown menu.
- Log IP Address of WinPLC** (with a dropdown menu)
- Display header for fields (Uses field alias for header label)**
- Log Time Stamp in Data Files**
- Example Filename:* A text input field.

**Archiving and Deleting Section:**

- Archive Files Cycle:** A dropdown menu.
- Archived Files Directory:** A text input field with a "Browse..." button to its right.
- Delete Files Cycle:** A dropdown menu.

At the bottom of the dialog are "OK" and "Cancel" buttons.

Following are explanations of each of the WinPLC Configuration Window's fields:

**Alias:** Optional name for the WinPLC - can be useful compared to remembering cryptic IP Addresses

**Data Directory:** Folder on the Server where all the input from the WinPLC will be stored

**IP Address:** Address of the WinPLC

**Use Alias in Filename:** If set, the Server will use the alias instead of the IP address for the filename representing the WinPLC data

**New Data File Cycle:** Specifies how often the Server should create a new file for the WinPLC data. It is also possible to specify to never create a new file with the option "Never (one file)"

## DataWorx WinPLC

---

**Fields Separation:** The fields received from the WinPLC need to be separated in the text file. Here you can choose to use comma or tabs to separate each field

**Log IP Address of WinPLC:** Tells the Server to enter the IP Address of the WinPLC as well as the data received from the WinPLC

**Display Header for Fields:** When set, the Server not only enters the WinPLC data but also the header information labeling each column

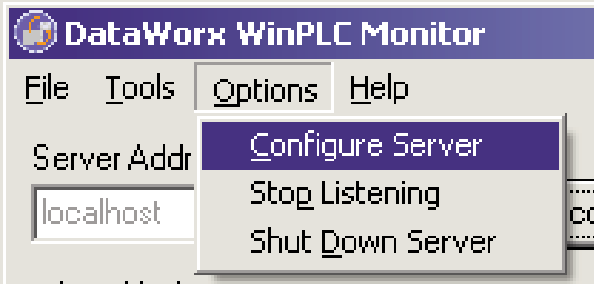
**Archive Files Cycle:** Allows you to create archives of the data files every month or year into .zip files

**Archived Files Directory:** This is the location where the Server will save the archived .zip files

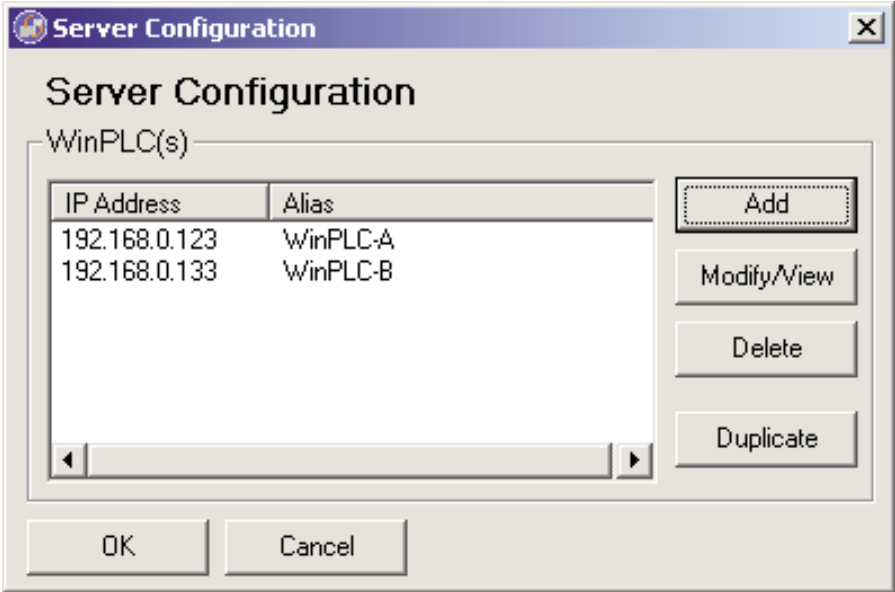
**Delete Files Cycle:** Allows you to delete the data files every month or year

## 5.2.3 Modifying a WinPLC

Go to menu  
OPTIONS -> CONFIGURE SERVER



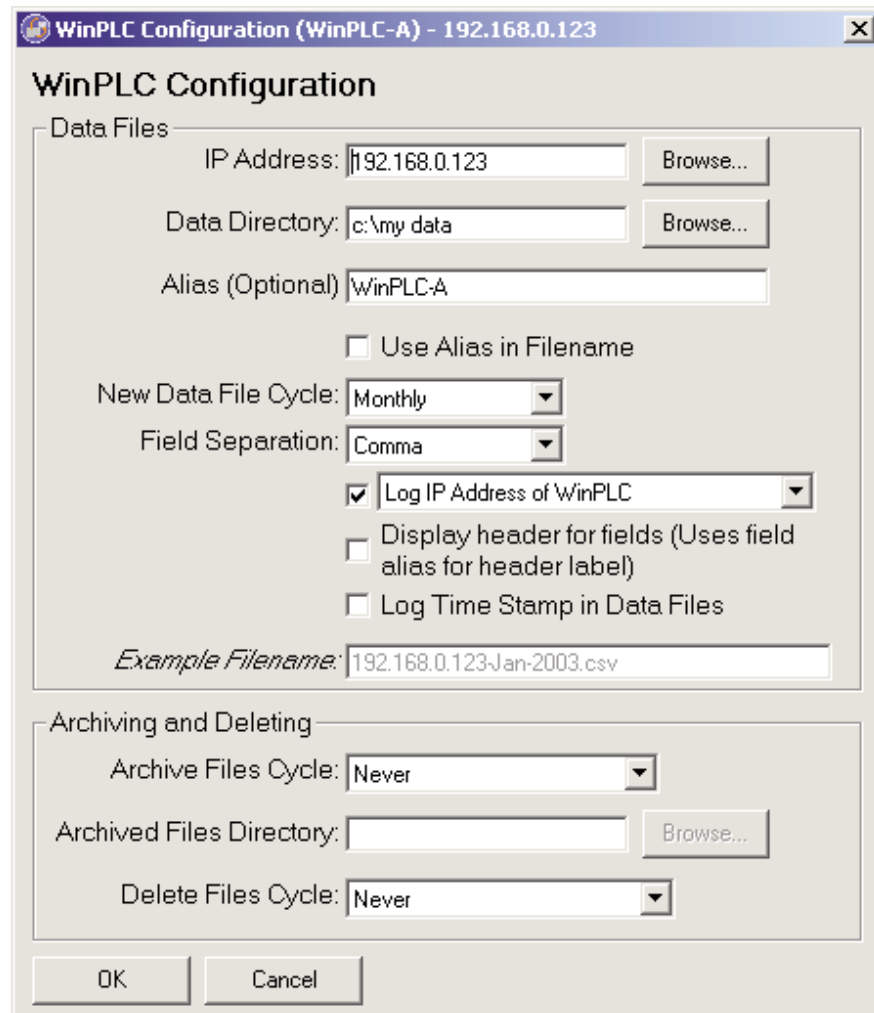
You will then see a list of WinPLCs, if any, configured for the Server:



## DataWorx WinPLC

---

Click the **MODIFY/VIEW** button and you will see a WinPLC Configuration screen, which shows the WinPLC data, as shown in the example below.



The image shows a Windows-style dialog box titled "WinPLC Configuration (WinPLC-A) - 192.168.0.123". The dialog is divided into two main sections: "Data Files" and "Archiving and Deleting".

**Data Files Section:**

- IP Address: 192.168.0.123 (with a "Browse..." button)
- Data Directory: c:\my data (with a "Browse..." button)
- Alias (Optional): WinPLC-A
- Use Alias in Filename
- New Data File Cycle: Monthly (dropdown menu)
- Field Separation: Comma (dropdown menu)
- Log IP Address of WinPLC (dropdown menu)
- Display header for fields (Uses field alias for header label)
- Log Time Stamp in Data Files
- Example Filename: 192.168.0.123-Jan-2003.csv

**Archiving and Deleting Section:**

- Archive Files Cycle: Never (dropdown menu)
- Archived Files Directory: (empty text box with a "Browse..." button)
- Delete Files Cycle: Never (dropdown menu)

At the bottom of the dialog are "OK" and "Cancel" buttons.

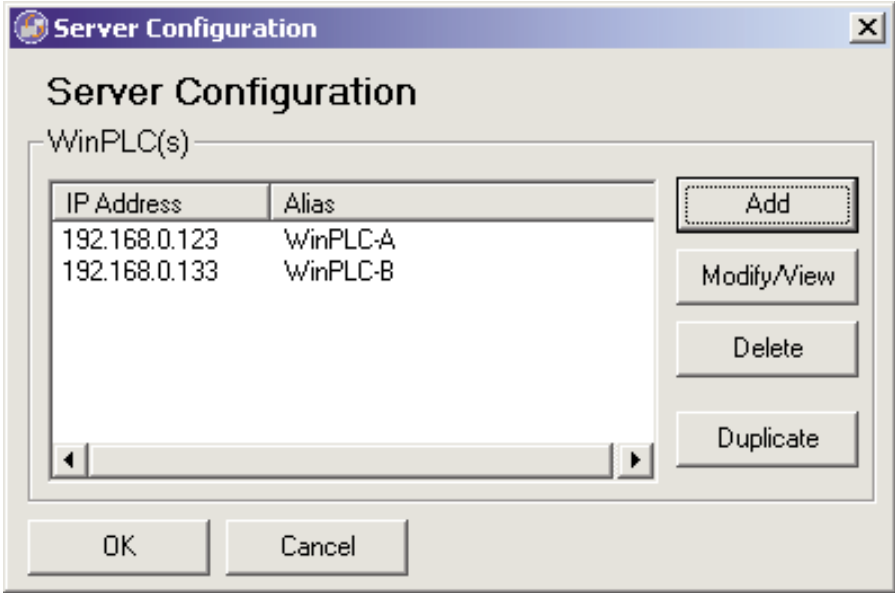
Once you are finished making changes, click **OK** to save or **CANCEL** to discard changes.

# 5.2.4 Deleting

Go to menu  
OPTIONS -> CONFIGURE SERVER



You will then see a list of WinPLCs, if any, configured for the Server.



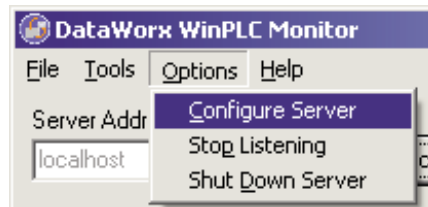
Select the WinPLC you wish to delete and click the DELETE button.



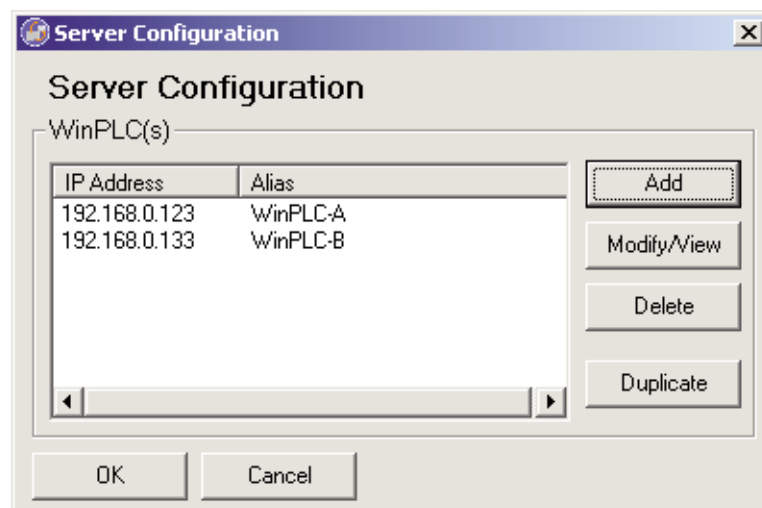
## 5.2.5 Duplicating

A great time-saving feature for those who have many WinPLCs with similar configurations. You can create one listing and make copies of it. Go to menu

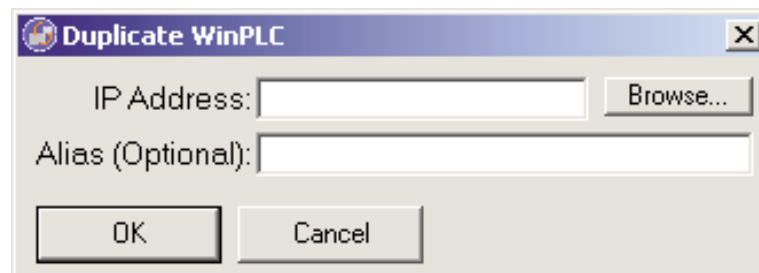
OPTIONS -> CONFIGURE SERVER



You will then see a list of WinPLCs, if any, configured for the Server.



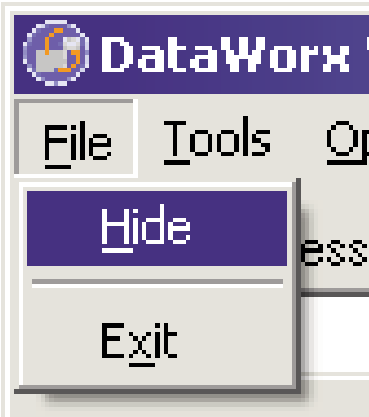
Click the **DUPLICATE** button and you will see the following window asking for the Alias and IP Address. Enter the necessary information and click **OK** to save changes, otherwise click **CANCEL** to discard changes.



## 5.2.6 Hiding

Hiding is a convenient feature that temporarily places the Monitor out of view for later access. To hide the Monitor, go to menu

FILE -> HIDE



The DataWorx WinPLC icon appears on the task bar.



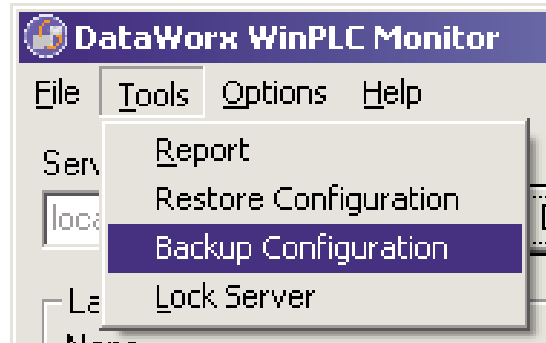
The application can then be restored by right-clicking on the icon and selecting **RESTORE**.



### 5.2.7 Backing up and Restoring

Backing up the configuration allows you to safely restore all your changes in the event of a hardware failure. To backup configuration, go to menu:

OPTIONS -> BACKUP CONFIGURATION



You will be prompted for a filename. Name the file and click **SAVE**. Make a note of the filename and its location, in case it is needed for a future restoration.

To restore the configuration in the event of a hardware failure, go to menu

OPTIONS -> RESTORE CONFIGURATION

You will be prompted for a filename. Enter the filename you chose during the backup process. Click **OPEN**, and the Server/Monitor should be restored to their original states.

### 5.2.8 Listening

The DataWorx WinPLC Server maintains "listening" and "not listening" states for WinPLC input. You can change the listening state from the Monitor as well as from the Server program.

Changing the listening state can be useful when in the process of installing new WinPLCs or changing the configuration, because it will prevent the Server from receiving irrelevant data.

To begin receiving data, click the **START LISTENING** button. (Note: If the text on the button reads "Stop Listening," the Server is already listening and receiving WinPLC data. The status of the Server's listening state should be displayed next to the command button.)



When the Server enters its listening state successfully, a "Listening to WinPLCs" status should be displayed and the text on the command button should read "Stop Listening."



To cause the Server to stop listening, click the **STOP LISTENING** button.



When listening stops, a "Not listening to WinPLCs" status will be displayed and the text on the command button will change back to "Start Listening."




## 5.2.9 Locking / Unlocking

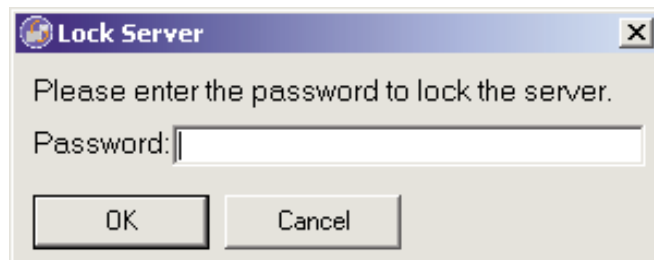
A useful feature for preventing unwanted WinPLC configurations and Server listen state changes.

To lock the Server configuration, click the **LOCK** button.

Unlocked

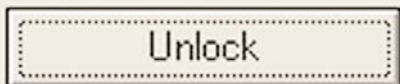
A rectangular button with a dashed border and the text "Lock" inside.

A screen will appear asking for the lock code. Enter the lock code and click **OK**. Make note of the lock code you have chosen so Server may be unlocked when necessary.



If the Server has been successfully locked, a “Locked” status will be displayed.

Locked

A rectangular button with a dashed border and the text "Unlock" inside.

---

**Warning: If you forget/lose the lock code you will NOT be able to unlock the Server**

---

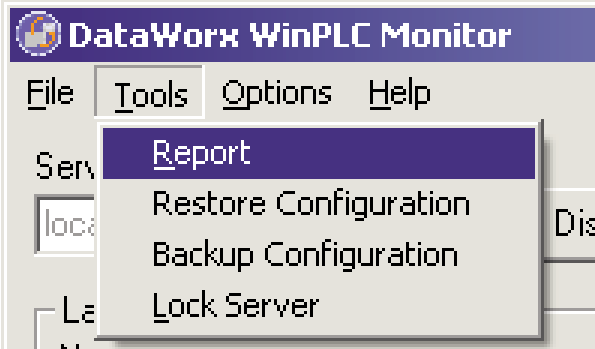
To unlock the Server, click the **UNLOCK** button, enter the lock code, and click **OK**.

## 5.2.10 Reporting

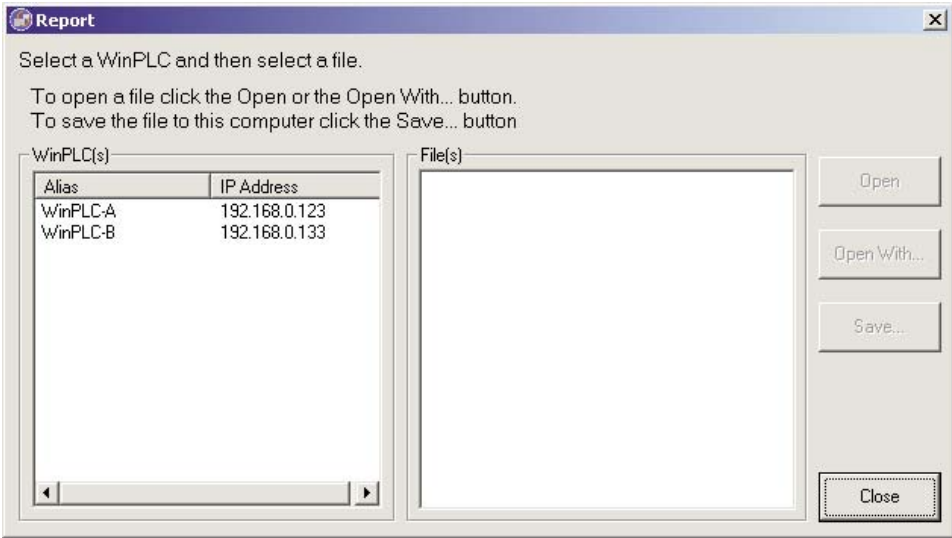
One of the most useful features of the Monitor, reporting allows you to view or save files generated by the Server over a network without having physical access to the Server.

To view the report, go to menu:

**TOOLS -> REPORT**



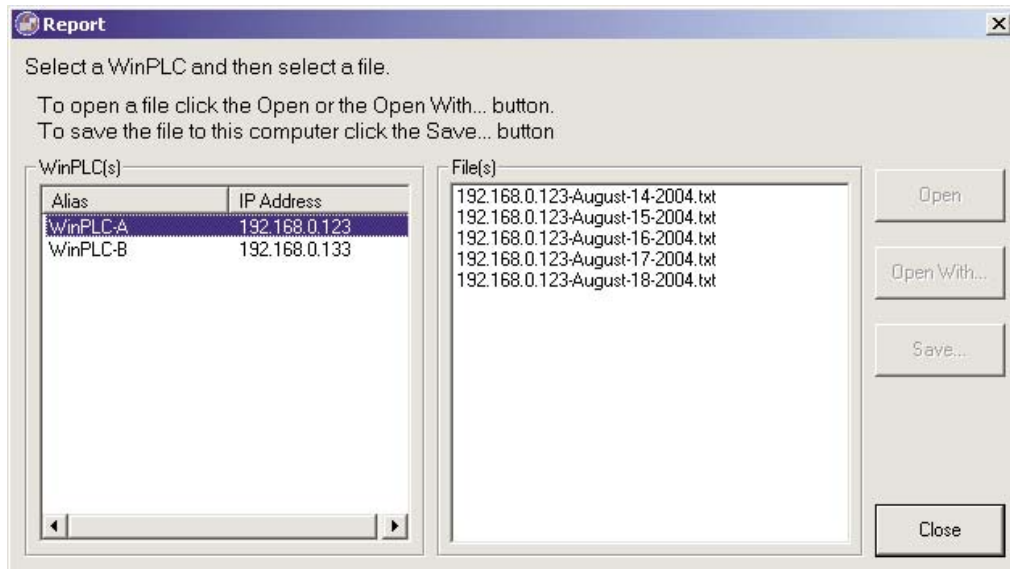
You should see a Report screen like the one shown here.



## DataWorx WinPLC

---

From the list on the left side of the screen, select the WinPLC from which you wish to view data.



Next, select a file from the File(s) list and click either the **OPEN**, **OPEN WITH** or **SAVE** button.

Note the difference between these three options:

**OPEN** uses the default application to open the file.

**OPEN WITH** prompts you for the application to open the file with Notepad, Excel, or a program of your choice.

**SAVE** allows you to place the file in a specified location on your computer or storage device, so it can be opened at a later time.



---

**Note:** Do not open the **current** log file outside of DataWorx. If you open the current log file outside of DataWorx, (Example: opening the log file from Excel) it will lock the file and not allow DataWorx to store data to this log file.

---