

## 4.0 Think & Do

In order for DataWorx WinPLC to receive data from the WinPLC, it is necessary to configure the WinPLC Think & Do project to send network commands to DataWorx WinPLC. The following are instructions for configuration:  
(For Think & Do Version 5.4)



**NOTE:** The following screen shots are for Think & Do Version 5.4. If you are using another version, the screens may be slightly different, but the underlying functionality will remain the same.

In the project center click on the IOView icon or  
go to menu TOOLS -> IOView

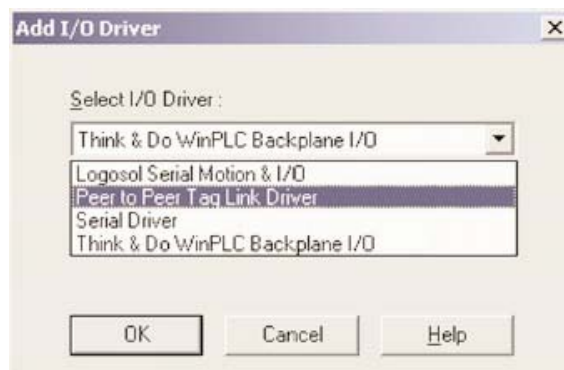
In I/O View

go to menu DRIVERS -> ADD...

The following prompt for the I/O driver will appear.



Select PEER TO PEER TAG LINK DRIVER

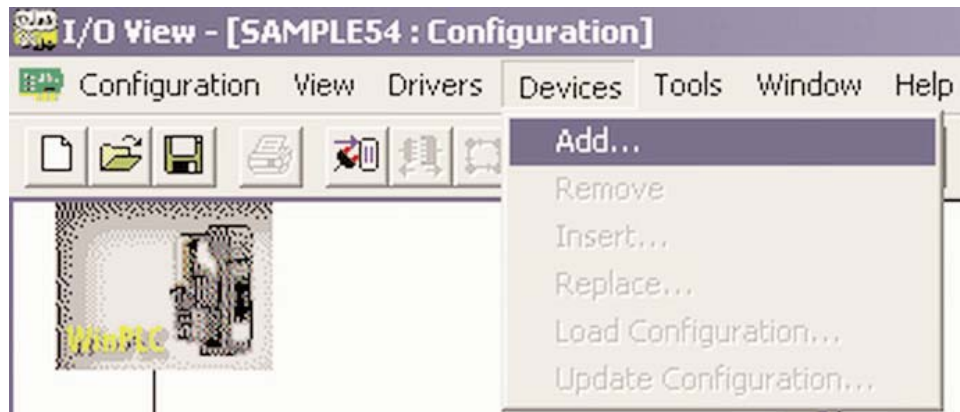


## DataWorx WinPLC

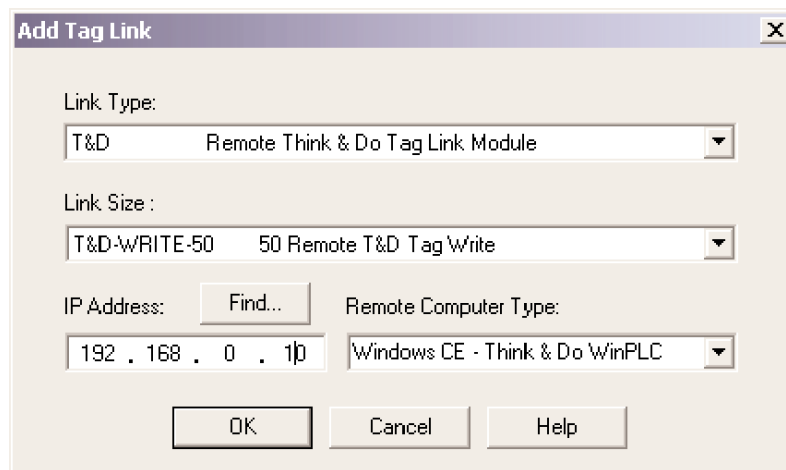
---

The next step is to add a device for this driver. Note that even though a physical device is not being added, a virtual device will be added that sends network messages to DataWorx WinPLC.

Go to menu DEVICES -> ADD



The following screen will appear.



Select **T&D-WRITE-50 50 Remote T&D Tag Write** for the Link Size.

For the IP Address field, enter the IP address of the **DataWorx WinPLC host computer**.

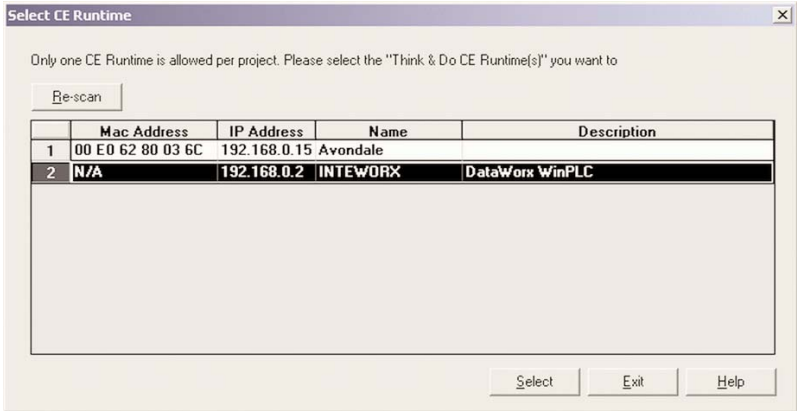


---

**NOTE:** The DataWorx WinPLC host computer **MUST** have a static IP address configuration. If the server uses DHCP then results will be unpredictable.

---

Click the FIND button and this window will appear.

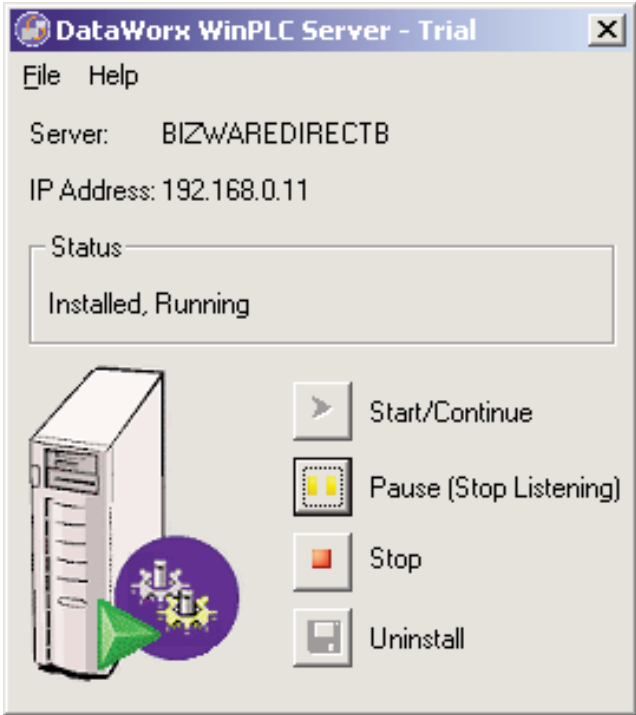


Select the DataWorx WinPLC item.

You can view the DataWorx WinPLC server IP address from the server window by following these steps:

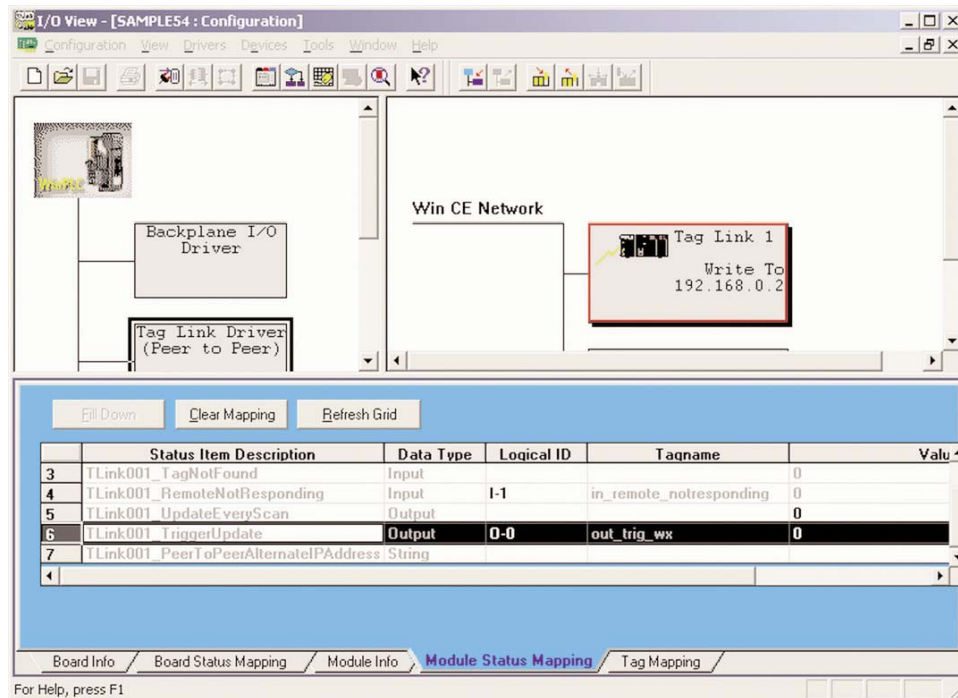
Go to START button -> AutomationDirect -> DataWorx WinPLC -> DataWorx WinPLC Server

The server address will be indicated by the IP Address: label like in the following screen.



## DataWorx WinPLC

Once the parameters are established, the user needs to establish a trigger so that messages can be sent to DataWorx WinPLC whenever desired. In the I/O View screen select the **Tag Link** driver and go to the **Module Status Mapping** tab:



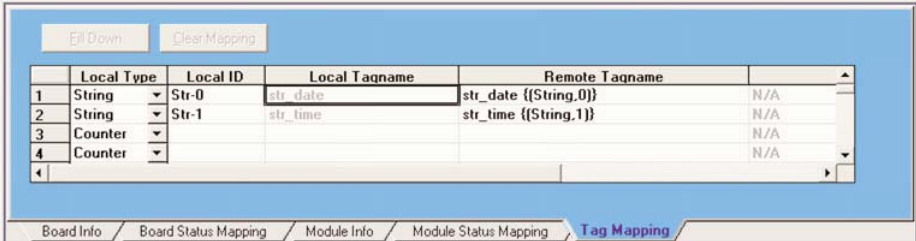
There is a TRIGGER UPDATE item, as is shown in this screen.

Status Item	Description	Data Type	Logical ID	Tagname	Value
3	TLink001_TagNotFound	Input			0
4	TLink001_RemoteNotResponding	Input	I-1	in_remote_notresponding	0
5	TLink001_UpdateEveryScan	Output			0
6	TLink001_TriggerUpdate	Output	0-0	out_trig_wx	0
7	TLink001_PeerToPeerAlternateIPAddress	String			

Map the TriggerUpdate to an output tag of your choice.

Next, decide which data items will need to be sent. Click the TAG MAPPING item, and add the desired tags to send.

Below is an example:

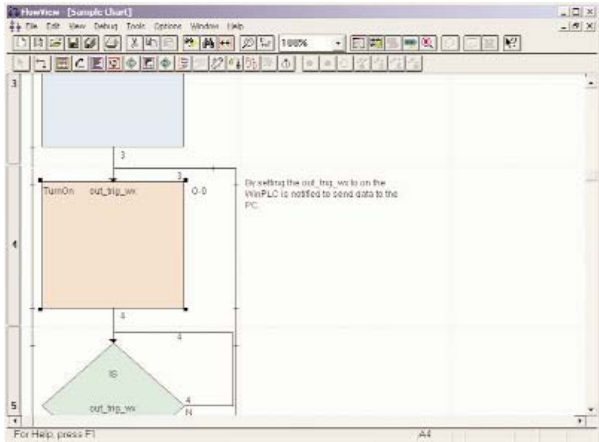


**NOTE:** that in the Remote Tagname column, data must be entered in this format: tagname [Space] {(Type, Index)}

For example, if a Number tag with index 3 and name "MyNumber" was entered, the following would have to be entered:

MyNumber {(Number, 3)}

Close I/O View and create a Flowchart. In the flowchart, activate sending the tags to DataWorx WinPLC by turning the TriggerUpdate flag on like in the following example:



To see a sample, go to:  
START -> Program Files -> AutomationDirect -> DataWorx WinPLC -> Samples -> Think & Do 5.4 Sample Project