

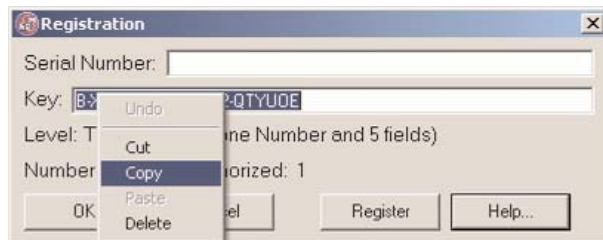
3.0 Registration

Registration Instructions:

- Ensure that the Server is running.
- Start the Monitor and connect to the Server.
- Go to Help -> Registration:



In the registration window, copy the registration key by selecting the key, pressing the right mouse button and selecting "Copy."



With your browser go to the following web site: <http://www.bizwaredirect.com/datalynxregistration.aspx> and paste the registration key into the Key: field in the web form. Also enter the serial number, which is located on the back of the CD cover, and the order number.

DataLynx Registration Form

Serial Number (From DVD Case)

Key (From DataLynx Install)

DataLynx User Manual

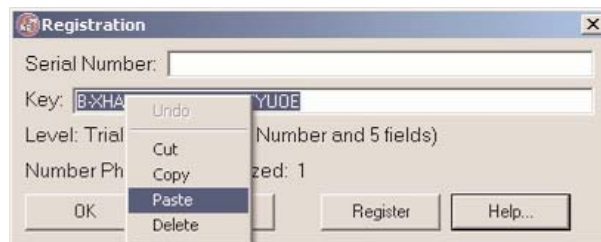
Click the "Create Registration" button. If the information has been entered correctly, the assigned key will appear:

DataLynx Registration Form

Serial Number (From DVD Case)	00000C185
Key (From DataLynx Install)	B-XHAPERSXAC-102-QTYUOE
<input type="button" value="Create Registration"/>	
Your assigned key	B-XHAPERSXAD-103-QTYUOE

Found registration for 1 device(s).

Copy the assigned key and paste into the DataLynx Monitor Registration screen by pressing the right mouse button and selecting "Paste."



- Click the "Register" button.



A success message and the registration window will show registration status:



- Click "OK"