

How to Combine Sounds (BD-_AE)

Items prepared by customer: SD card (type: SDV-2GP, sold separately), Personal computer, SD card reader/writer

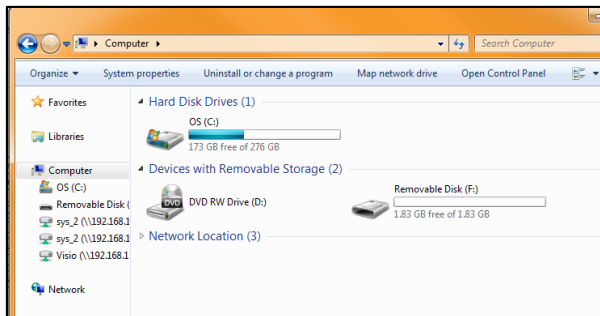
Note: SD card must be formatted in FAT12 or FAT16

1 CREATING THE SOUND COMBINATION DATA

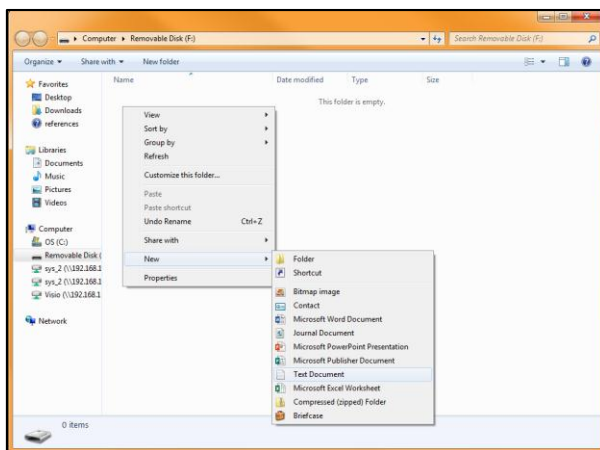
- Connect SD card reader/writer to PC and insert SD card



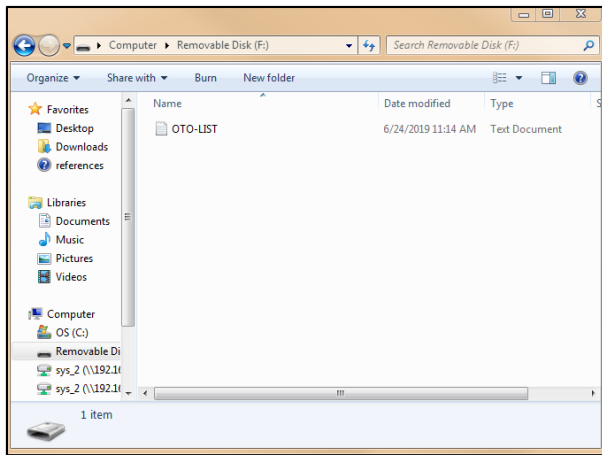
- Open the drive into which the SD card is inserted



- Right click in the opened window. Navigate to [New](#). Create a new [Text Document](#)

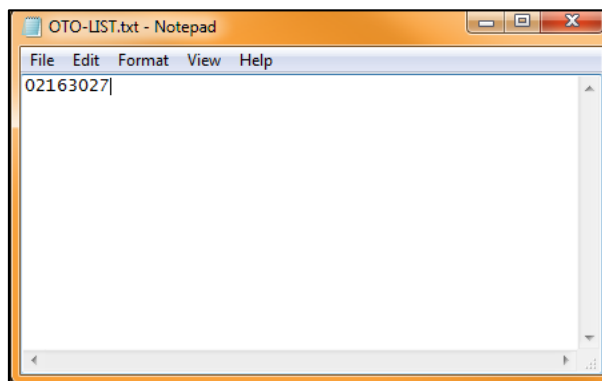
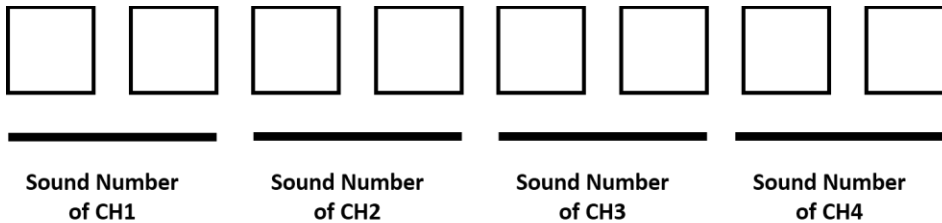


- Change the name of the document to **OTO-LIST.txt**



- o Use half size upper- or lowercase letters for the name. If the extension “.txt” is not displayed when the text document is created, change the file name to **OTO-LIST**

- In the text document enter the value of the sound you want. Save the file. Eject the SD card.



Example: **02163027**

CH1 is 02 Stutter (rapid intermittent horn)

CH2 is 16 Falling Crystals

CH3 is Symphony No.40

Ch4 is 27 Mary had a little lamb

1	Beep (slow intermittent horn)	9	Stutter+Bell	17	Inverted Reveille	25	Annie Laurie
2	Stutter (rapid intermittent horn)	10	Synthesized Melody Chime	18	Galactic Motor	26	London bridge is falling down
3	Bell (clear high pitched bell)	11	Chime	19	Ringing Phone	27	Mary had a little lamb
4	Yelp (rapid siren)	12	Call Sign	20	Two Tone	28	The Camp town Races
5	Rapid Hi-Lo	13	Train Ride	21	Alarm Clock	29	Amaryllis
6	Melody Chime	14	Galloping Hi-Lo	22	Ringing Hi-Lo	30	Symphony No.40
7	Synthesized Piano	15	Alien Chatter	23	Fur Elise	31	Ave Maria
8	Synthesized Bell	16	Falling Crystals	24	Minuet	32	Grandfather's Clock

2 TRANSFERRING THE SOUND COMBINATION DATA

- Turn off power to the product
- Open the front cover by sliding down the front cover of the product
- Insert prepared SD card
- Turn on power to the product
- Sound data transfer is complete when you hear a high-pitched tone.
 - o The writing completes in 1 second or less

Note: If you hear a high pitched tone repeatedly or no sound at all, the writing was unsuccessful.

Note: if the volume control is set to the minimum, you will not hear the sound of completion.

- Set the group selection to "P" and confirm sound is correct on each channel



- Remove SD card when finished. Close cover.