

## Input Specifications

Inputs per Module	32 (Sink/Source)
Operating Voltage Range (Tolerance)	24 VAC/VDC
Input Voltage Range	20.4 - 27.6 VAC/VDC
Peak Voltage Range	27.6 VAC/VDC
AC Frequency	47-63 Hz
Input Current	Typ 3.4mA @ 24VAC/VDC
Maximum Input Current @ Temp	5.0mA @ 27.6 VAC/VDC
ON Voltage Level	> 12 VDC, > 9 VAC
OFF Voltage Level	< 10.5 VDC, < 9 VAC
Minimum ON Current	2.5mA
Maximum OFF Current	0.5mA
OFF to ON Response	DC: 10ms > max AC: 20ms
ON to OFF Response	DC: 20ms > max AC: 40ms
Status Indicators	Logic Side (32 Points)
Commons per Module	4 Isolated (8 points/common)



## P2-32NE3 AC/DC Input

The P2-32NE3 AC/DC Input Module provides thirty-two 24VAC or VDC sink/source inputs for use with the Productivity2000 System.

Input Specifications .....	1
Module Installation Procedure.....	2
QR Code .....	2
Hot Swap Information.....	3
Wiring Options.....	3
Wiring Diagram and Schematic.....	3
Warning .....	4
Connector Specifications.....	4
General Specifications .....	4

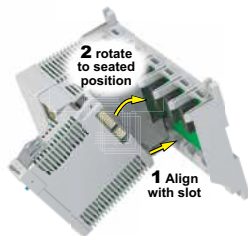
**Terminal Block sold separately, (see wiring options on page 3).**

Warranty: Thirty-day money-back guarantee. Two-year limited replacement.  
 (See [www.productivity2000.com](http://www.productivity2000.com) for details).

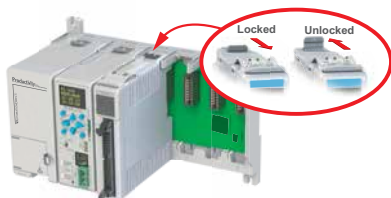
# Module Installation

**WARNING:** Do not apply field power until the following steps are completed. See hot-swapping procedure for exceptions.

**Step One:** Align module catch with base slot and rotate module into connector.



**Step Two:** Pull top locking tab toward module face. Click indicates lock is engaged.



**Step Three:** Attach field wiring using the removable terminal block or ZIPLink wiring system.



# QR Code



Use any QR Code reader application to display the module's product insert.

**Caution:** If possible, remove field power prior to proceeding. If not, then **EXTREME** care **MUST** be taken to prevent damage to the module, or even personal injury due to a short circuit from the live terminal block.

## Important Hot-Swap Information

**The Productivity 2000 supports hot-swap!** Individual modules can be taken offline, removed, and replaced while the rest of the system continues controlling your process. Before attempting to use the hot-swap feature, be sure to read the hot-swap topic in the programming software's help file or our online documentation at [AutomationDirect.com](http://AutomationDirect.com) for details on how to plan your installation for use of this powerful feature.

# Wiring Options

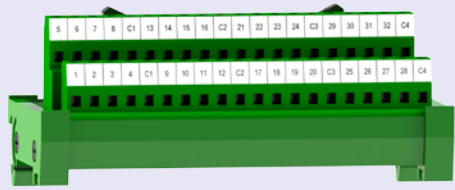
**ZIPLink Connection System**  
**Cable + ZIPLink Module = Complete System**



**ZIPLink pre-wired cables**  
**ZIPLink Modules**  
 0.5m (1.6FT) cable  
 1.0m (3.3FT) cable  
 2.0m (6.6FT) cable



ZL-CBL-40  
 ZL-CBL-40-1  
 ZL-CBL-40-2



Feed through ZL-RTB40

## ZL-RTB40 Labels

UPPER

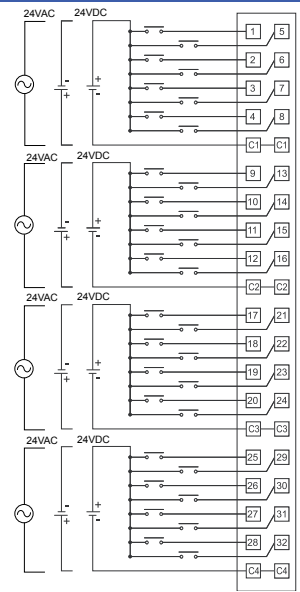
5	6	7	8	C1	13	14	15	16	C2	21	22	23	24	C3	29	30	31	32	C4
---	---	---	---	----	----	----	----	----	----	----	----	----	----	----	----	----	----	----	----

LOWER

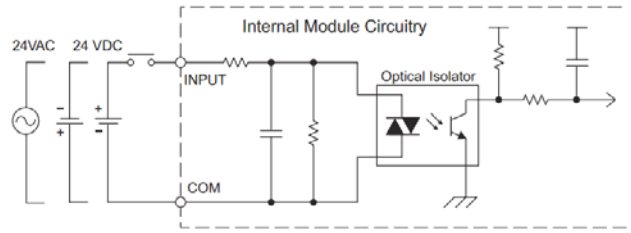
1	2	3	4	C1	9	10	11	12	C2	17	18	19	20	C3	25	26	27	28	C4
---	---	---	---	----	---	----	----	----	----	----	----	----	----	----	----	----	----	----	----

Note: P2-32NE3 is UL/CUL listed when used with ZL-RTB40

# Wiring Diagram and Schematic



## Equivalent Input Circuit



**WARNING:** To minimize the risk of potential safety problems, you should follow all applicable local and national codes that regulate the installation and operation of your equipment. These codes vary from area to area and it is your responsibility to determine which codes should be followed, and to verify that the equipment, installation, and operation are in compliance with the latest revision of these codes.

***Equipment damage or serious injury to personnel can result from the failure to follow all applicable codes and standards. We do not guarantee the products described in this publication are suitable for your particular application, nor do we assume any responsibility for your product design, installation, or operation.***

If you have any questions concerning the installation or operation of this equipment, or if you need additional information, please call Technical Support at 770-844-4200.

This publication is based on information that was available at the time it was printed. At AutomationDirect.com® we constantly strive to improve our products and services, so we reserve the right to make changes to the products and/or publications at any time without notice and without any obligation. This publication may also discuss features that may not be available in certain revisions of the product.

## General Specifications

Surrounding Air Temperature	0° to 60°C (32° to 140°F),
Storage Temperature	-20° to 70°C (-4° to 158°F)
Humidity	5 to 95% (non-condensing)
Environmental Air	No corrosive gases permitted
Vibration	IEC60068-2-6 (Test Fc)
Shock	IEC60068-2-27 (Test Ea)
Field to Logic Side Isolation	1500VAC applied for 1 second
Insulation Resistance	>10MΩ @ 500VDC
Heat Dissipation	3W
Enclosure Type	Open Equipment
Agency Approvals	UL508 file E139594, Canada & USA CE (EN61131-2*)
Module Keying to Backplane	Electronic
Module Location	Any I/O slot in a Productivity2000 System.
Field Wiring	Use ZIPLink Wiring System only. See "Wiring Options" on page 3.
EU Directive	See the "EU Directive" topic in the Productivity Suite Help File. Information can also be obtained at: <a href="http://www.productivity2000.com">www.productivity2000.com</a>
Weight	104g (3.7 oz)

\*Meets EMC and Safety requirements. See the D.O.C. for details.

## Connector Specifications

Connector Type	IDC style Header with latch, Omron XG4A-4034
Number of Pins	40
Pitch	0.1 in. (2.54 mm)

Document Name	Edition/Revision	Date
P2-32NE3-DS	1st Ed.	10/21/2015

Copyright 2015, AutomationDirect.com Incorporated/All Rights Reserved Worldwide