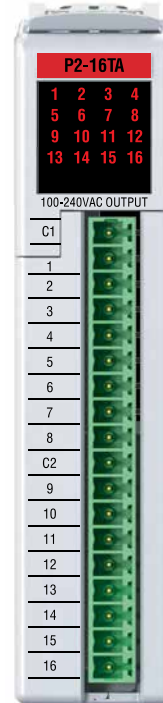


## Output Specifications

Outputs per Module	16	
Voltage Rating	100-240 VAC	
Operating Voltage Range (Tolerance)	(CE)	100-240 VAC (-15% / +10%)
	(UL)	100-240 VAC (-20% / +20%)
AC Frequency	47 - 63 Hz	
Maximum Output Current @ Temp	0.5A / point , 4A / common @ 55°C	
	0.3A / point , 2.4A / common @ 60°C	
Minimum Load	10 mA	
Maximum Leakage Current	4 mA @ 264 VAC	
On Voltage Drop	1.5 VAC @ > 50 mA	
	4.0 VAC @ < 50 mA	
Maximum Inrush Current	10A for 10 ms	
OFF to ON Response	1 ms + 1/2 cycle	
ON to OFF Response	1 ms + 1/2 cycle	
Status Indicators	Logic Side (16 points)	
Commons	2 Isolated Commons for 120V	
	2 Non-Isolated Commons for 240V (external jumper required)	
Recommended External Fuse	6.3A Max (Automation Direct P/N S5006-3-R)	

## P2-16TA AC Output

The P2-16TA AC Output Module provides sixteen 100-240 VAC outputs for use with the Productivity2000 system.



Output Specifications .....	1
Module Installation .....	2
QR Code .....	2
Hot Swap Information.....	2
Wiring Options.....	3
Wiring Diagram and Schematic.....	3
Warning.....	4
Removable Terminal Block Specifications.....	4
General Specifications .....	4

Document Name	Edition/Revision	Date
P2-16TA-DS	1st Ed. Rev. A	11/5/2015

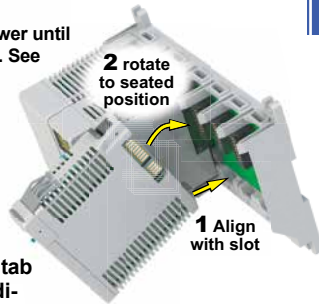
**Terminal Block sold separately, (see wiring options on page 3).**

Warranty: Thirty-day money-back guarantee. Two-year limited replacement. (See [www.productivity2000.com](http://www.productivity2000.com) for details).

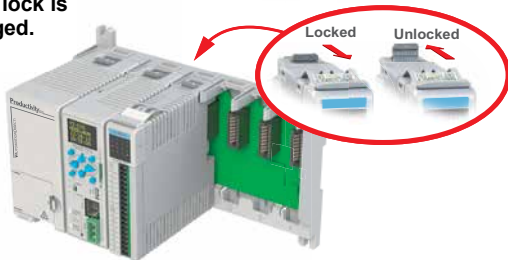
# Module Installation

**WARNING:** Do not apply field power until the following steps are completed. See hot-swapping procedure for exceptions.

**Step One:** Align module catch with base slot and rotate module into connector.



**Step Two:** Pull top locking tab toward module face. Click indicates lock is engaged.



**Step Three:** Attach field wiring using the removable terminal block or ZIPLink wiring system.



# QR Code



Use any QR Code reader application to display the module's product insert.

**Caution:** If possible, remove field power prior to proceeding. If not, then **EXTREME** care **MUST** be taken to prevent damage to the module, or even personal injury due to a short circuit from the live terminal block.


## Important Hot-Swap Information

The Productivity2000 supports hot-swap! Individual modules can be taken offline, removed, and replaced while the rest of the system continues controlling your process. Before attempting to use the hot-swap feature, be sure to read the hot-swap topic in the programming software's help file or our online documentation at [AutomationDirect.com](http://AutomationDirect.com) for details on how to plan your installation for use of this powerful feature.

# Wiring Options


**1** **ZIPLink Connection System**  
**Cable + ZIPLink Module = Complete System**

**ZIPLink pre-wired terminal block cables**



0.5m (1.6FT) cable  
 1.0m (3.3FT) cable  
 2.0m (6.6FT) cable

**ZIPLink Modules**




Feed through

**ZIPLINK**  
 AUTOMATIONDIRECT

ZL-P2-CBL18  
 ZL-P2-CBL18-1  
 ZL-P2-CBL18-2

ZL-RTB20

**2** **Terminal Block with pigtail cable**

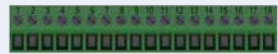


1.0m (3.3FT) cable  
 2.0m (6.6FT) cable

ZL-P2-CBL18-1P  
 ZL-P2-CBL18-2P


**ZIPLINK**  
 AUTOMATIONDIRECT

**3** **Screw Terminal Block only**



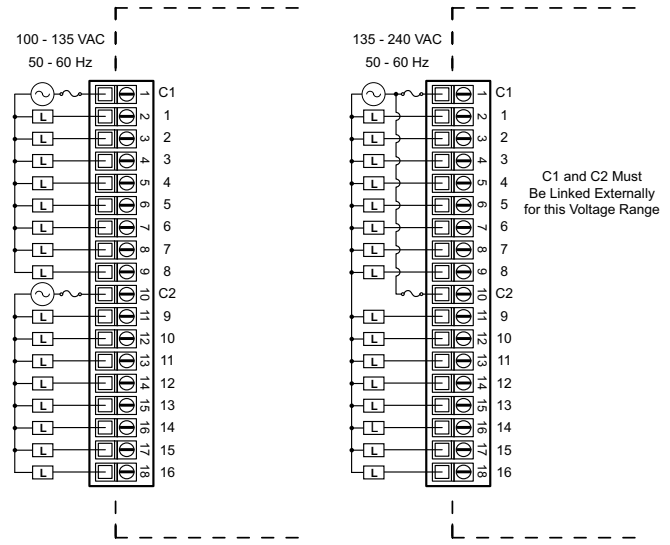
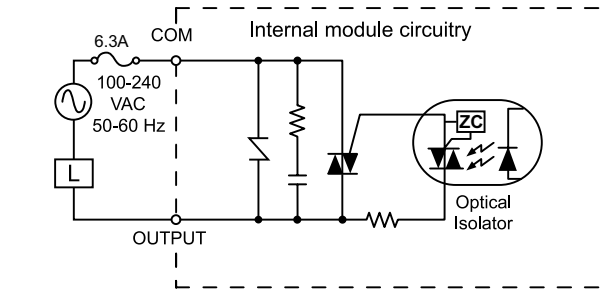
P2-RTB  
 (Quantity 1)

**4** **Spring Clamp Terminal Block only**



P2-RTB-1  
 (Quantity 1)

# Wiring Diagram and Schematic



**WARNING:** To minimize the risk of potential safety problems, you should follow all applicable local and national codes that regulate the installation and operation of your equipment. These codes vary from area to area and it is your responsibility to determine which codes should be followed, and to verify that the equipment, installation, and operation are in compliance with the latest revision of these codes.

***Equipment damage or serious injury to personnel can result from the failure to follow all applicable codes and standards. We do not guarantee the products described in this publication are suitable for your particular application, nor do we assume any responsibility for your product design, installation, or operation.***

If you have any questions concerning the installation or operation of this equipment, or if you need additional information, please call Technical Support at 770-844-4200.

This publication is based on information that was available at the time it was printed. At AutomationDirect.com® we constantly strive to improve our products and services, so we reserve the right to make changes to the products and/or publications at any time without notice and without any obligation. This publication may also discuss features that may not be available in certain revisions of the product.

## Removable Terminal Block Specifications

Part Number	P2-RTB	P2-RTB-1
Number of Positions	18 Screw Terminals	18 Spring Clamp Terminals
Wire Range	30-16 AWG (0.051 - 1.31 mm <sup>2</sup> ) Solid / Stranded Conductor 3/64 in. (1.2 mm) Insulation Maximum 1/4 in. (6-7 mm) Strip Length	28-16 AWG (0.081 - 1.31 mm <sup>2</sup> ) Solid / Stranded Conductor 3/64 in. (1.2 mm) Insulation Maximum 19/64 in. (7-8 mm) Strip Length
Conductors	"USE COPPER CONDUCTORS, 75°C" or Equivalent.	
Screw Driver Width	1/8 inch (3.8 mm) Maximum	
Screw Size	M2	N/A
Screw Torque	2.5 lb-in (0.28 N-m)	N/A

## General Specifications

Operating Temperature	0° to 60°C (32° to 140°F)
Storage Temperature	-20° to 70°C (-4° to 158°F)
Humidity	5 to 95% (non-condensing)
Environmental Air	No corrosive gases permitted
Vibration	IEC60068-2-6 (Test Fc)
Shock	IEC60068-2-27 (Test Ea)
Field to Logic Side Isolation	1800VAC applied for 1 second
Insulation Resistance	>10MΩ @ 500VDC
Heat Dissipation	1.9W
Enclosure Type	Open Equipment
Agency Approvals	UL508 file E139594, Canada & USA CE (EN61131-2*)
Module Keying to Backplane	Electronic
Module Location	Any I/O slot in any local base in a Productivity2000 System.
Field Wiring	Use ZIPLink Wiring System or removable terminal block (not included). See "Wiring Options" on page 3.
EU Directive	See the "EU Directive" topic in the Productivity Suite Help File. Information can also be obtained at: <a href="http://www.productivity2000.com">www.productivity2000.com</a>
Connector Type (not included)	18 position removable terminal block
Weight	90g (3.2oz)

\*Meets EMC and Safety requirements. See the D.O.C. for details.