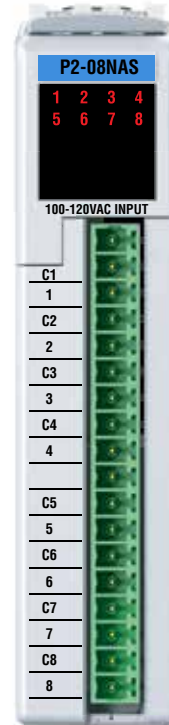


Input Specifications

Inputs per Module	8
Rated Voltage	100–120 VAC
Operating Voltage Range	80–144 VAC
AC Frequency	47–63 Hz
Input Current	8.5 mA @ 100VAC (50Hz) 10mA @ 100VAC (60Hz)
Maximum Input Current @ Temp	13mA @ 60°C (144VAC)
Input Impedance	12kΩ (50Hz), 12kΩ (60Hz)
ON Voltage Level	> 70VAC
OFF Voltage Level	< 20VAC
Minimum ON Current	5mA
Maximum OFF Current	2mA
OFF to ON Response	< 10ms
ON to OFF Response	< 25ms
Status Indicators	Logic side (8 points)
Commons	8 Isolated (1 point / common)



P2-08NAS AC Isolated Input

The P2-08NAS AC Isolated Input Module provides eight 100–120 VAC isolated inputs for use with the Productivity2000 system.

Input Specifications	1
Module Installation Procedure.	2
Terminal Block Removal	2
Hot Swap Information	2
Wiring Options.	3
Schematic and Wiring Diagram.	3
Warning	4
Removable Terminal Block Specifications	4
General Specifications	4

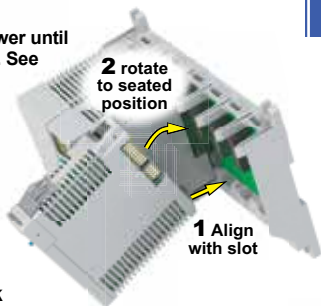
Terminal Block sold separately (see wiring options on page 3).

Warranty: Thirty-day money-back guarantee. Two-year limited replacement. (See www.productivity2000.com for details).

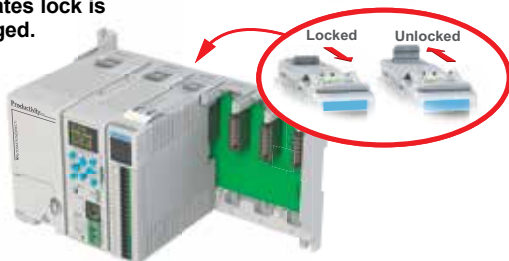
Module Installation

WARNING: Do not apply field power until the following steps are completed. See hot-swapping procedure for exceptions.

Step One: Align module catch with base slot and rotate module into connector.



Step Two: Pull top locking tab toward module face. Click indicates lock is engaged.



Step Three: Attach field wiring using the removable terminal block or ZIPLink wiring system.



QR Code



Caution: If possible, remove field power prior to proceeding. If not, then **EXTREME** care **MUST** be taken to prevent damage to the module, or even personal injury due to a short circuit from the live terminal block.

Important Hot-Swap Information

The Productivity2000 supports hot-swap! Individual modules and entire remote base groups can be taken offline, removed, and replaced while the rest of the system continues controlling your process. Before attempting to use the hot-swap feature, be sure to read the hot-swap topic in the programming software's help file or our online documentation at AutomationDirect.com for details on how to plan your installation for use of this powerful feature.

Wiring Options

1 ZIPLink Connection System Cable + ZIPLink Module = Complete System

ZIPLink pre-wired
terminal block cables

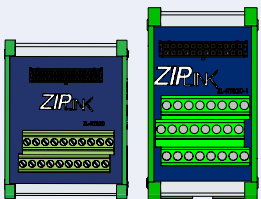


0.5 m (1.6 FT) cable
1.0 m (3.3 FT) cable
2.0 m (6.6 FT) cable



ZL-P2-CBL18
ZL-P2-CBL18-1
ZL-P2-CBL18-2

ZIPLink Modules



Feed through

ZL-RTB20
ZL-RTB20-1

2 Terminal Block with pigtail cable



1.0 m (3.3 FT) cable
2.0 m (6.6 FT) cable



ZL-P2-CBL18-1P
ZL-P2-CBL18-2P

3 Screw Terminal Block only



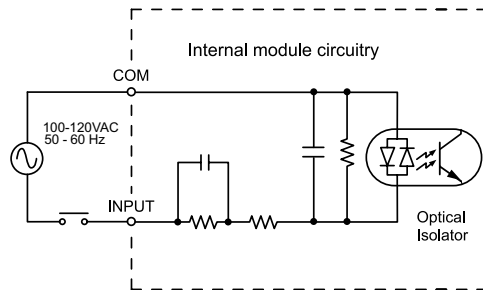
P2-RTB
(Quantity 1)

4 Spring Clamp Terminal Block only

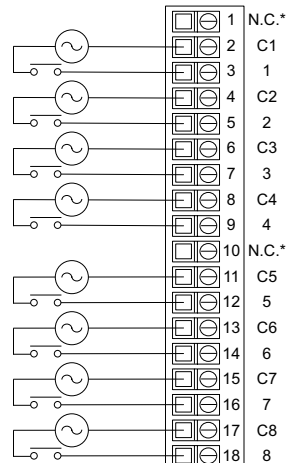


P2-RTB-1
(Quantity 1)

Schematic and Wiring Diagrams



100 - 120 VAC
50 - 60 Hz



*N.C. = No Connection

WARNING: To minimize the risk of potential safety problems, you should follow all applicable local and national codes that regulate the installation and operation of your equipment. These codes vary from area to area and it is your responsibility to determine which codes should be followed, and to verify that the equipment, installation, and operation are in compliance with the latest revision of these codes.

Equipment damage or serious injury to personnel can result from the failure to follow all applicable codes and standards. We do not guarantee the products described in this publication are suitable for your particular application, nor do we assume any responsibility for your product design, installation, or operation.

If you have any questions concerning the installation or operation of this equipment, or if you need additional information, please call Technical Support at 770-844-4200.

This publication is based on information that was available at the time it was printed. At AutomationDirect.com® we constantly strive to improve our products and services, so we reserve the right to make changes to the products and/or publications at any time without notice and without any obligation. This publication may also discuss features that may not be available in certain revisions of the product.

General Specifications

Operating Temperature	0° to 60°C (32° to 140°F),
Storage Temperature	-20° to 70°C (-4° to 158°F)
Humidity	5 to 95% (non-condensing)
Environmental Air	No corrosive gases permitted
Vibration	IEC60068-2-6 (Test Fc)
Shock	IEC60068-2-27 (Test Ea)
Field to Logic Side Isolation	1800VAC applied for 1 second
Insulation Resistance	>10MΩ @ 500VDC
Heat Dissipation	600mW
Enclosure Type	Open Equipment
Module Keying to Backplane	Electronic
Module Location	Any I/O slot in Productivity2000 System.
Field Wiring	Use ZIPLink Wiring System or removable terminal block (not included). See "Wiring Options" on page 3.
EU Directive	See the "EU Directive" topic in the Productivity Suite Help File. Information can also be obtained at: www.productivity2000.com
Connector Type (sold separately)	18 position terminal block
Weight	85g (2.9 oz)
Agency Approvals	UL61010-2-201 file E139594, Canada & USA CE (EMC: EN61131-2*, SAFETY: EN61010-2-201)

*Meets EMC and Safety requirements. See the D.O.C. for details.

Removable Terminal Block Specifications

Part Number	P2-RTB	P2-RTB-1
Number of Positions	18 Screw Terminals	18 Spring Clamp Terminals
Wire Range	30–16 AWG (0.051 – 1.31 sq. mm) Solid / Stranded Conductor 3/64 in (1.2 mm) Insulation Max. 1/4 in (6–7 mm) Strip Length	28–16 AWG (0.081 – 1.31 mm ²) Solid / Stranded Conductor 3/64 in (1.2 mm) Insulation Max. 19/64 in (7–8) mm Strip Length
Conductors	"USE COPPER CONDUCTORS, 75°C" or Equivalent	
Screw Driver Width	1/8 inch (3.8 mm) Maximum	
Screw Size	M2	N/A
Screw Torque	2.5 lb-in (0.28 N-m)	N/A

Document Name	Edition/Revision	Date
P2-08NAS-DS	2nd Ed.	9/26/2016

Copyright 2016, AutomationDirect.com Incorporated/All Rights Reserved Worldwide