

Troubleshooting the OP-1212 Panel

Troubleshooting This section is intended to help you through some typical situations that might occur while using the OP-1212. It is difficult to diagnose or solve all probable situations that may arise, therefore this section will discuss some of the more common trouble areas.

To help isolate the problem area, these problems have been divided into three sections:

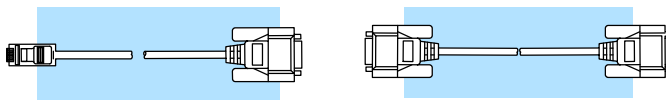
- Panel Configuration
- Panel to PLC Communications
- Panel Operation

If you continue to have a problem after applying this section, please contact our Technical Support team. Someone will be available between 9:00 am and 6:00 pm (EST) Monday through Friday. Phone **1-800-633-0405**.

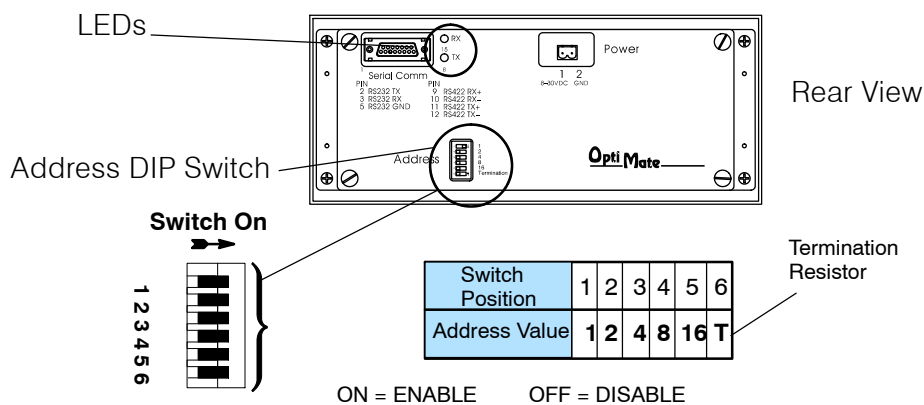
Panel Configuration

When I try to download the configuration, the message "could not communicate with panel" appears.

- Examine the two LEDs on the rear of the panel that show the state of the communication link. If the RX LED blinks but the TX LED does not, verify that you are using the appropriate cables.



- If the RX LED does not blink, the communication cable is plugged into the wrong serial port of the PC, the cable is faulty, or the panel is faulty.
- If the TX LED and/or the RX LED is blinking very slowly while you are attempting to download and all of the Lamps and LEDs are blinking, verify that the panel address is set to 31 (all positions ON) and power cycle the panel.

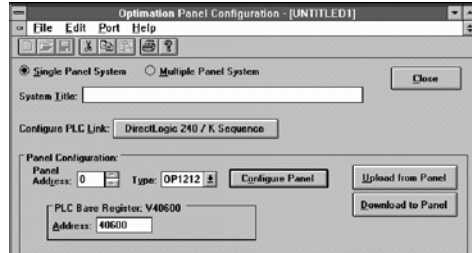


- If all of these corrective actions do not help, you may have a faulty panel.

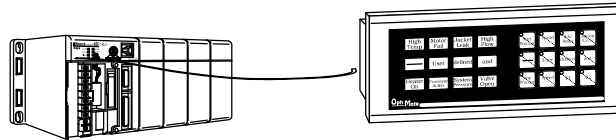
Panel to PLC Communications

I have configured the panel and connected it to my PLC. All of the lights are flashing and nothing seems to work. What do I do?

- Observe the TX and RX LEDs on the rear of the panel. If the TX LED flashes but the RX does not, check all cables and connections and try again.
- Examine the configuration and verify the Link and Comm. information match the PLC type and family that you are using (i.e. baud rate, parity, stop bit, address).



- If you are using the secondary comm port on a **Direct**LOGIC PLC and both TX and RX LEDs are flashing verify the mode of that port is set to HEX and not ASCII.
- If you are using a Allen-Bradley PLC, verify that the baud rate for channel 0 is set to 4800 or 9600 and the memory map has been expanded to include the full range of registers (i.e., N7:0 through N7:7).

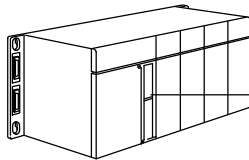


Panel Operation

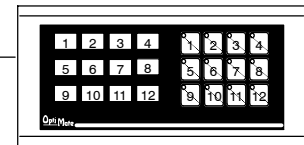
When I press a pushbutton nothing happens.

- Verify that the control relays that you are using in your ladder logic match the ones associated with the memory location that you mapped to the panel.

DirectLOGIC

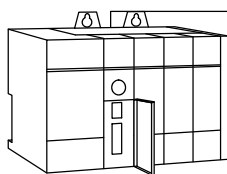


Mapped Memory Location	Function
m (such as V40600) C0-C17	Indicator Lamps ON/OFF
m+1 (such as V40601) C20-C37	Indicator Lamps Flash Control
m+2 (such as V40602) C40-C57	Button LEDs ON/OFF
m+3 (such as V40603) C60-C77	Button LEDs Flash Control
m+4 (such as V40604) C100-C117	Button ON/OFF Status
m+5 (such as V40605) C120-C137	Force Pushbuttons Data & Comnd



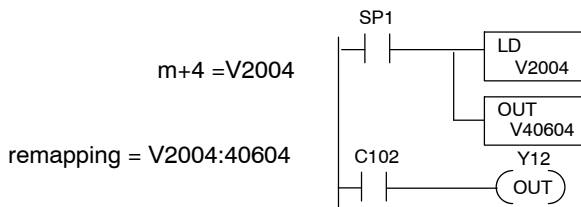
Mapping Assignments

Allen-Bradley



Mapped Memory Location	Function
m (such as N7: 0/0-0/15)	Indicator Lamps ON/OFF
m+1 (such as N7: 1/0-1/15)	Indicator Lamps Flash Control
m+2 (such as N7: 2/0-2/15)	Button LEDs ON/OFF
m+3 (such as N7: 3/0-3/15)	Button LEDs Flash Control
m+4 (such as N7: 4/0-4/15)	Button ON/OFF Status
m+5 (such as N7: 5/0-5/15)	Force Pushbuttons Data & Comnd

- If you are remapping, make sure that you are remapping in the proper direction and that you are using a contact that is always ON as the input to the remapping logic. Remapping must be performed every scan to function properly.



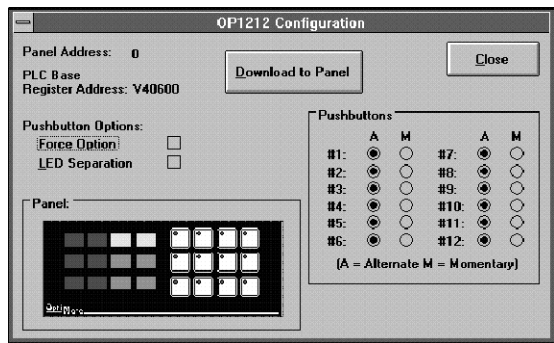
Here we are using SP1 to map V2004 to V40604. This consumes 16 relay bits, 12 of which are tied to the 12 pushbuttons of the panel. By pressing Pushbutton 3, you affect the status of the third relay in V40604 which is C102. In turn, C102 will control output Y12.

When I activate a bit to light a pushbutton LED, it does not light.

- Verify that you are using the correct address. The base address you chose during panel configuration determines the proper addresses to use.
- If you are remapping, make sure that you are remapping in the proper direction and that you are using a contact that is always ON as the input to the remapping logic. Remapping must be performed every scan to function properly.
- Verify that **LED Separation Mode** was **enabled** during panel configuration.

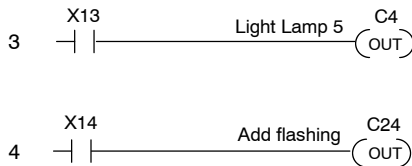
When I press a pushbutton the associated LED does not turn ON.

- If the LED Separation Mode was enabled, the LED will work independently of the pushbutton. In this case the LED will be turned ON by the ladder logic program.
- The pushbutton may be configured as momentary. In this case the LED will be ON only as long as the pushbutton is being pressed.



I can not make the lamp flash. What could I be doing wrong?

- Remember that to flash a lamp, it must be turned ON first. Verify that you are turning the Lamp ON before you activated the flashing option.



Rungs 3 and 4 -Flashing Lamps

To flash a Lamp, it must be first turned ON. When contact X13 is activated Lamp 5 will turn ON and when contact X14 is activated the Lamp will flash.