

T84T - 3/2 shut-off valve

Excelon® Plus Modular System



- > Port size: 3/8" ... 3/4" (ISO G/PTF)
- > Excelon® Plus design allows in-line installation or modular installation with other Excelon® Plus products
- > 3/2 way function
- > Threaded exhaust port
- > Lockable in closed position with padlock



Technical features

Medium:

Compressed air only

Maximum supply pressure:

20 bar (290 psi)

Port size:

G3/8, G1/2, G3/4,
3/8 PTF, 1/2 PTF, 3/4 PTF

Flow:

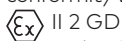
From IN to OUT ports:

1/2": 162 dm³/s at 6,3 bar and

Δp 0,5 bar pressure drop,
1,8 dm³/s from OUT to exhaust port.

Atex:

Shut-off valves T84 are in conformity with Atex 2014/34/EU



Ex h IIC T6 Gb

EX h IIIC T85°C Db

Ambient/Media temperature:

-20 ... +65°C (-4 ... +149°F)

Air supply must be dry enough to avoid ice formation at temperatures below +2°C (+35°F).

Materials:

Body: Die cast aluminium

Body covers: ABS

Elastomers: NBR

Technical data T84T - standard models

Symbol	Port size	Function	Valve type	Exhaust port forms	Weight (kg)	Model
	G3/8	3/2	Ball valve	Exhaust port threaded G1/4	0,48	T84T-3GA-B1N
	G1/2	3/2	Ball valve	Exhaust port threaded G1/4	0,48	T84T-4GA-B1N
	G3/4	3/2	Ball valve	Exhaust port threaded G1/4	0,48	T84T-6GA-B1N

Option selector

T84T-★★A-B1N

Function	Substitute
3/2	T

Thread form	Substitute
PTF	A
ISO G parallel (standard)	G
Port size	Substitute
3/8"	3
1/2"	4
3/4"	6

Accessories

Wall mounting bracket



Page 6

840024-50KIT

Quikclamp®



Page 6

840014-51KIT

Quikclamp® with bracket assembled



Page 6

840014-52KIT

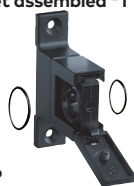
Hybrid Quikclamp® *1



Page 6

840014-61

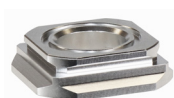
Hybrid Quikclamp® with bracket assembled *1



Page 6

840014-62

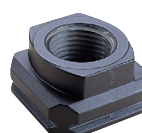
Connector 84-82 Series *2



Page 6

4417-01

Port Adaptors



Page 7

3/8 PTF	840015-02KIT
1/2 PTF	840015-03KIT
3/4 PTF	840015-04KIT
G3/8	840015-10KIT
G1/2	840015-11KIT
G3/4	840015-12KIT

Pressure sensing block 1/4 PTF



Page 6

840016-50KIT

Pressure sensing block G1/4



Page 6

840016-51KIT

Full flow porting block 3/4" PTF



Page 6

840028-50KIT

Full flow porting block G3/4



Page 6

840028-53KIT

Full flow porting block 3/4" PTF



Page 6

840028-68KIT

Full flow porting block G3/4



Page 6

840028-69KIT

Pressure switch interface block (18D pressure switch) G1/4



Page 8

0337717000000000

Pressure switch 18D (0,5 ... 8bar) *1



Page 8

0881300

Digital pressure switch 51D (-1 ... 10 bar) *2



Page 8

0806010

Electronic Pressure Sensor – stand alone version *3



Q84G

IO-Link cables

Connection cable M8x1 for intergated digital pressure switch



Description	Cable length (m)	Model
M8 female to M12 male	0,6	NC-084FS-124MS-A
	1,0	NC-084FS-124MS-1
	2,0	NC-084FS-124MS-2
	5,0	NC-084FS-124MS-5
M8 female to free end	3,0	NC-084FS-00000-3

Padlock

Padlock



840055-01KIT

Lockout device



840055-02KIT

Silencer

Porous plastic silencer *3) G1/4



M/S2

Plastic silencer *3) G1/4



0014600000000000

Sinter bronze silencer *3) G1/4



T40C2800

Sinter bronze silencer *3) 1/4 PTF

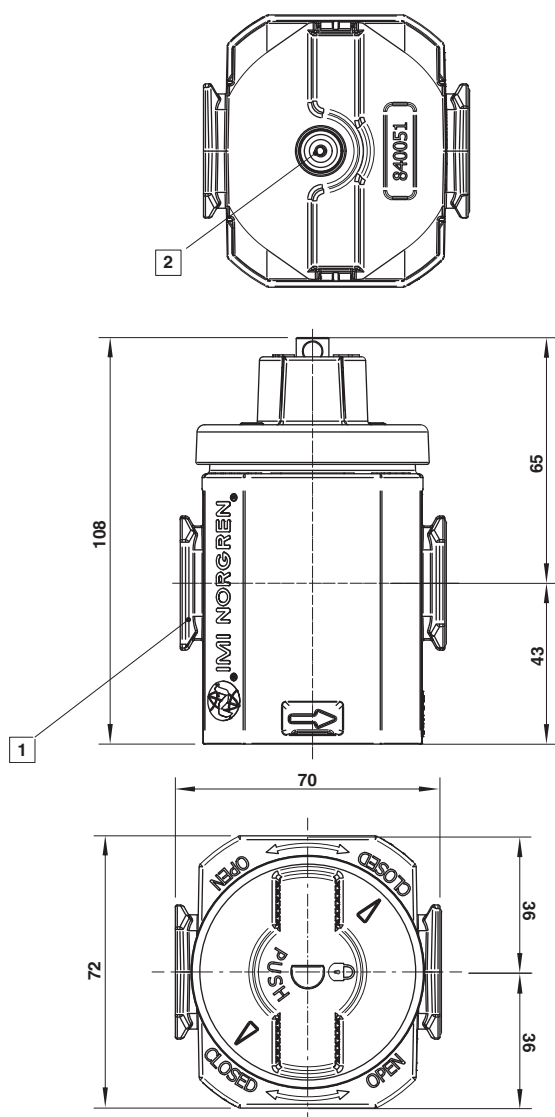


MS002A

*3) Max. pressure of silencers listed in this data sheet : 10bar. For pressure higher than 10bar please contact Norgren

Dimensions

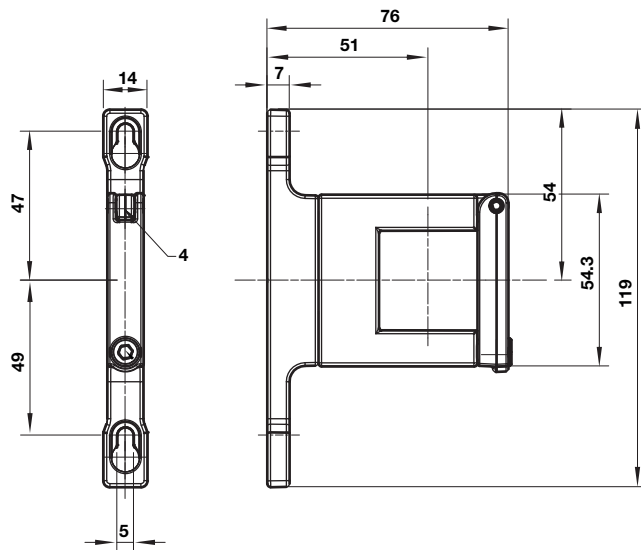
Dimensions in mm
Projection/First angle



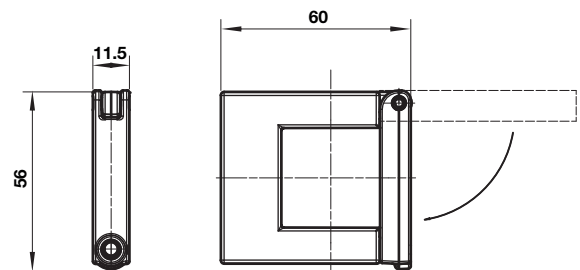
- 1 Main ports
3/8", 1/2" OR 3/4" ISO G/PTF
- 2 Exhaust Port G1/4 or 1/4 PTF

Accessories

Quikclamp® with wall bracket



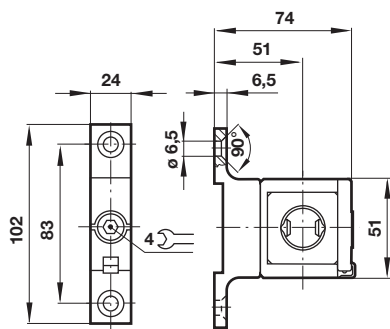
Quikclamp®



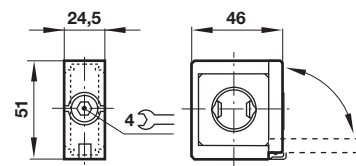
Dimensions in mm
Projection/First angle



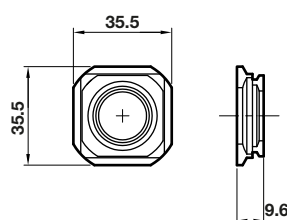
Hybrid-Quikclamp® with wall bracket



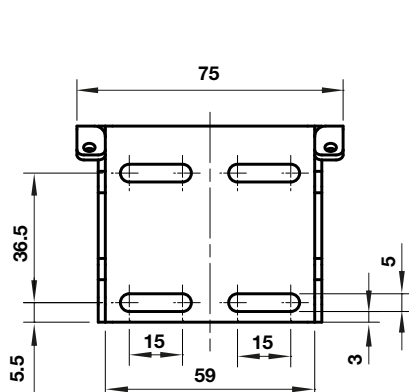
Hybrid-Quikclamp®



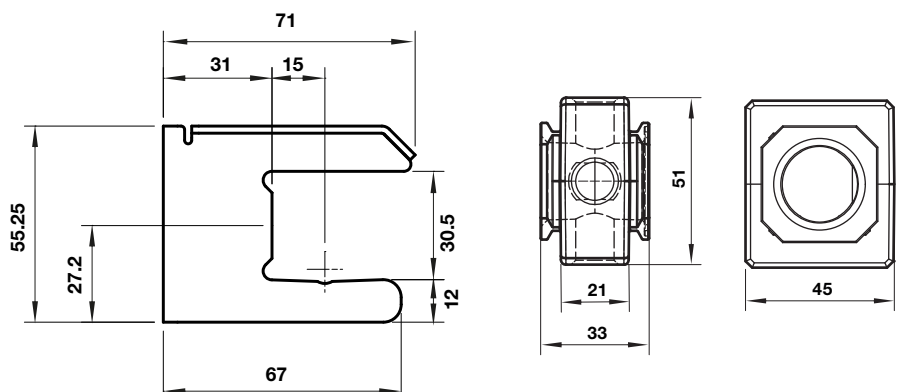
Connector 84-82 Series



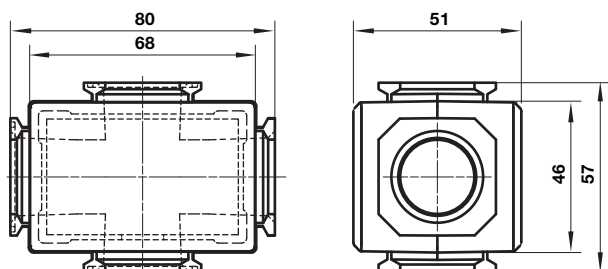
Mounting bracket



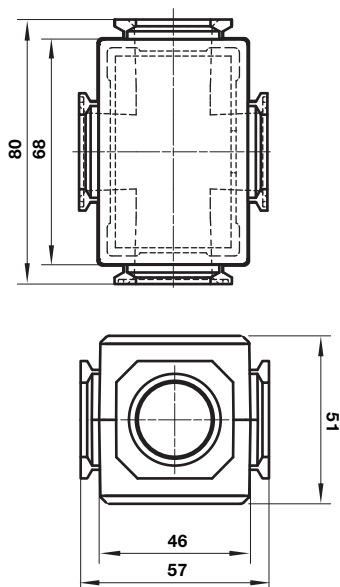
Pressure sensing block



Full flow porting block horizontal



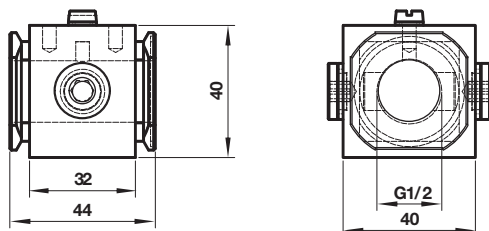
Full flow porting block vertical



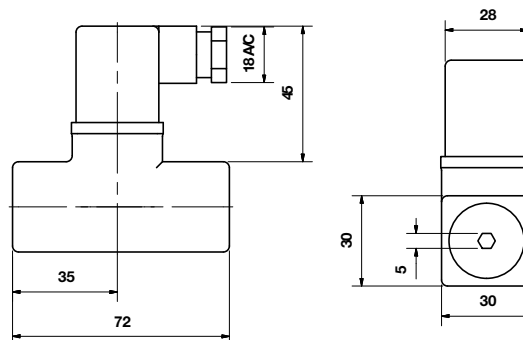
Dimensions in mm
Projection/First angle



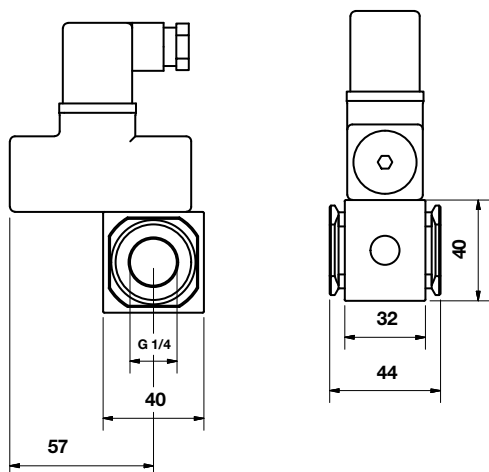
Porting block for 18D pressure switch



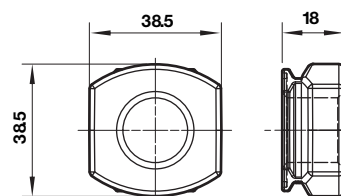
18D Pressure switch



18D Porting block and 18D assembled

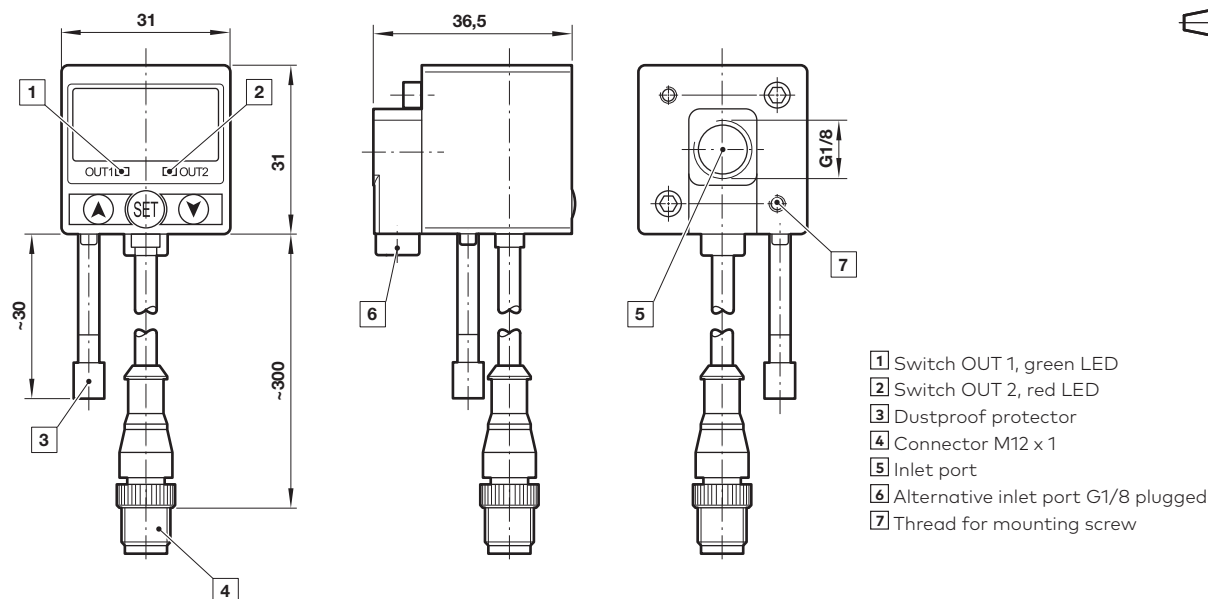


Pipe adaptor



51D Pressure switch - digital

Dimensions in mm
Projection/First angle



Warning

These products are intended for use in industrial compressed air systems only. Do not use these products where pressures and temperatures can exceed those listed under »**Technical features/data**«.

Before using these products with fluids other than those specified, for non-industrial applications, life-support systems or other applications not within published specifications, consult Norgren Ltd.

Through misuse, age, or malfunction, components used in fluid power systems can fail in various modes.

The system designer is warned to consider the failure modes of all component parts used in fluid power systems and to provide adequate safeguards to prevent personal injury or damage to equipment in the event of such failure.

System designers must provide a warning to end users in the system instructional manual if protection against a failure mode cannot be adequately provided.

System designers and end users are cautioned to review specific warnings found in instruction sheets packed and shipped with these products.