

P82C 3/2 Control Valve

Excelon Plus Modular System



- > Port size: 1/4" to 3/8" (ISO G/PTF)
- > Excelon® Plus design allows in-line installation or modular installation with other Excelon® Plus products
- > High forward flow capacity
- > 3 port/2 position valve, normally closed
- > High flow dump facility



Technical features

Medium:

Compressed air only

Maximum supply pressure:

145 psi (10 bar)

Minimum operating pressure:

43 psi (3 bar)

Port size:

G1/4, G3/8, 1/4 PTF, 3/8 PTF

Flow:

43 scfm (20 dm³/s) at port size 1/4"

Full flow P1 to P2 @ 91 psi (6.3 bar) inlet, with 7 psi (0.5 bar) pressure drop

P2 to P3 = 43 scfm (20 dm³/s)

Ambient/Media temperature:

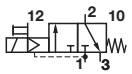
-4 to +149°F (-20 to +65°C)

Air supply must be dry enough to avoid ice formation at temperatures below +35°F (+2°C).

Materials:

Body: Aluminum
End Caps: Aluminum
Body covers: ABS
Elastomers: NBR
Valve: Brass




Technical data P82C

Symbol	Port Size (PTF)	Function	Voltage	Exhaust Port (PTF)	Weight lbs (g)	Model
	1/4	3/2 Control	24 VDC	1/4	0.94 (428)	P82C-2AT-PFA
	3/8	3/2 Control	24 VDC	1/4	0.94 (428)	P82C-3AT-PFA

Electrical details for solenoid operators

Voltage tolerance:	-10%/+15%
Rating:	100% continuous duty
Inlet orifice:	0.8mm
Electrical connection:	15mm DIN EN 175301-803 (DIN 43 50) Table C
Manual override:	Shrouded push button, spring return
Protection class:	IP65 with sealed plug (ISO 6952) NEMA 4
Materials:	PP5 (body), NBR (seals)

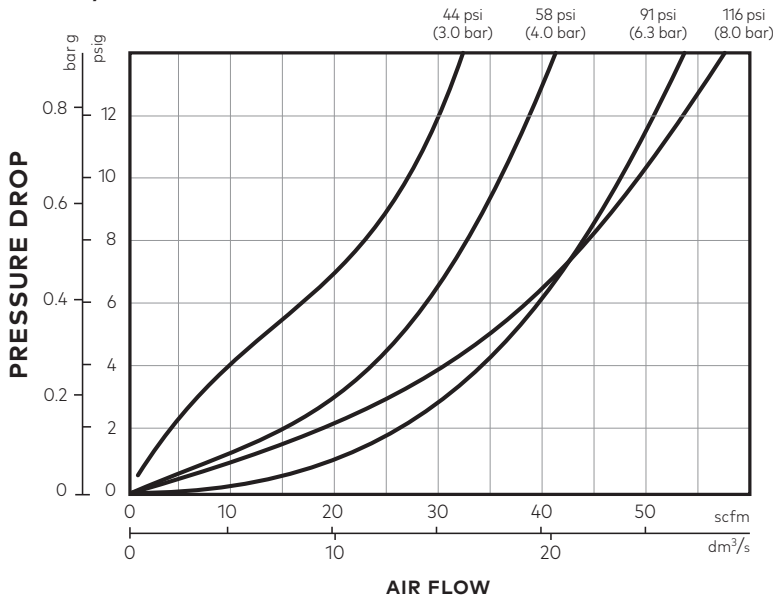
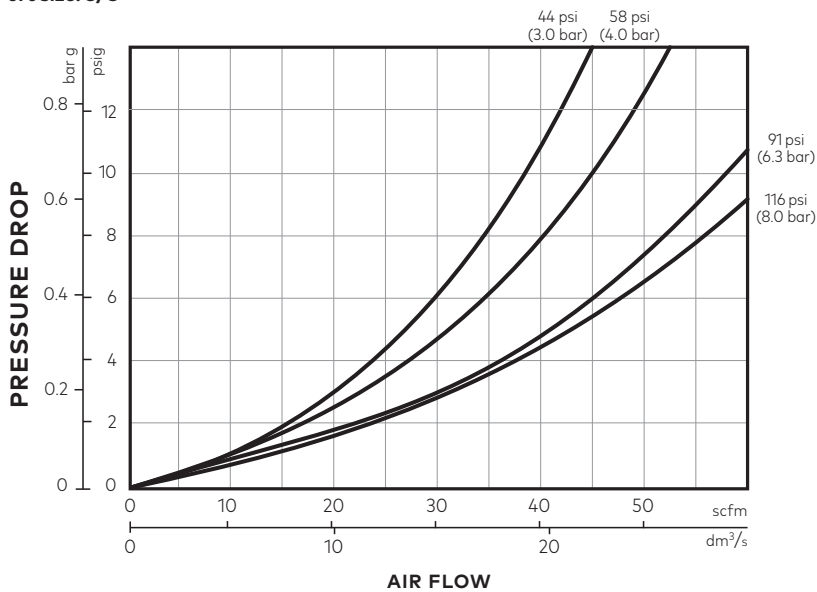
Voltage rating and spare coils

	Voltage	Power	Replacement
	24 VDC	1.2 W	840650-50KIT
	110 VAC	1.5 VA	840650-51KIT
	220 VAC	1.5 VA	840650-52KIT

Option selector
P82C-★ ★ T-P★ A

Function	Substitute
3/2 Control Valve	C
Port Size	Substitute
1/4"	2
3/8"	3
Thread Form	Substitute
PTF	A
ISO G	G

Voltage	Substitute
24 VDC	F
115 VAC	A
220 VAC	B

Flow characteristics
Port size: 1/4"

Port size: 3/8"


Accessories

Quikclamp®



820014-51KIT

Quikclamp® with bracket assembled



820014-52KIT

Pressure sensing block 1/4 PTF



820016-50KIT

Pressure sensing block G1/4



820016-51KIT

Full flow porting block 3/8 PTF



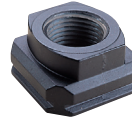
820028-50KIT

Full flow porting block G3/8



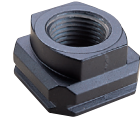
820028-53KIT

Port Adaptors 1/4 PTF



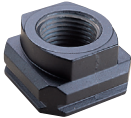
820015-02KIT

Port Adaptors 3/8 PTF



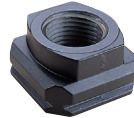
820015-03KIT

Port Adaptors G1/4



820015-08KIT

Port Adaptors G3/8



820015-09KIT

Silencer

Heavy duty muffler, 1/4" NPT male thread, brass wire element



MBO02A

Heavy duty muffler, R1/4 male thread, brass wire element



MBO02B

Accessories continued
Connection cable with plug,LED and M12 Female

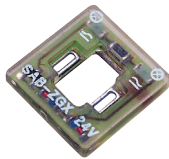

Description	Cable length ft. (m)	Model
	1.97 (0,6)	NC-DINCA-123MS-A
PUR-Cable; M12/valve type C DIN connector	3.28 (1)	NC-DINCA-123MS-1
	6.56 (2)	NC-DINCA-123MS-2
	16.40 (5)	NC-DINCA-123MS-5

Plug with with moulded cable and indicator


Voltage	Cable length ft. (m)	Model
12 - 24 V a.c. / d.c	3.28 (1)	V10014-D01
12 - 24 V a.c. / d.c	9.84 (3)	V10014-D03
110 V a.c. / d.c.	3.28 (1)	V10015-D01
110 V a.c. / d.c.	9.84 (3)	V10015-D03
220 V a.c. / d.c	3.28 (1)	V10016-D01
220 V a.c. / d.c	9.84 (3)	V10016-D03

Plug with moulded cable


Description	Cable length ft. (m)	Model
3 pin plug with moulded cable	3.28 (1)	V10013-D01
3 pin plug with moulded cable	9.84 (3)	V10013-D03

Light Emitting Seals ,15mm form C


Description	Model
Light Emitting Seals Circuit A (12 - 24 V d.c.)	V10037-E13
Light Emitting Seals Circuit B (110 - 120 V a.c.)	V10037-E18
Light Emitting Seals Circuit B (220 - 240 V a.c.)	V10037-E19

Plug with cable gland and indicator


Description	Model
Plug with cable gland and indicator 12-24 V a.c. / d.c., c/w LED / VDR	V10012-D13
Plug with cable gland and indicator 110 V a.c. / d.c., c/w LED / VDR	V10012-D18
Plug with cable gland and indicator 220 V a.c. / d.c., c/w LED / VDR	V10012-D19

M12 Adaptor Top - MSUP Valve Plug Form C 8MM


7000-42831-0000000

M12 Adaptor Rear - MSUP Valve Plug Form C 8MM

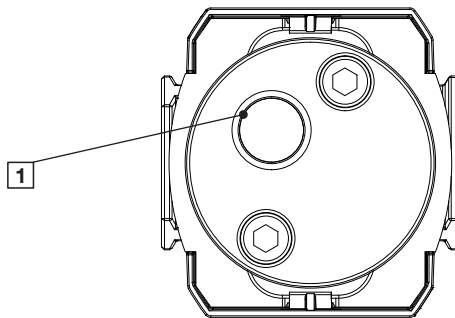
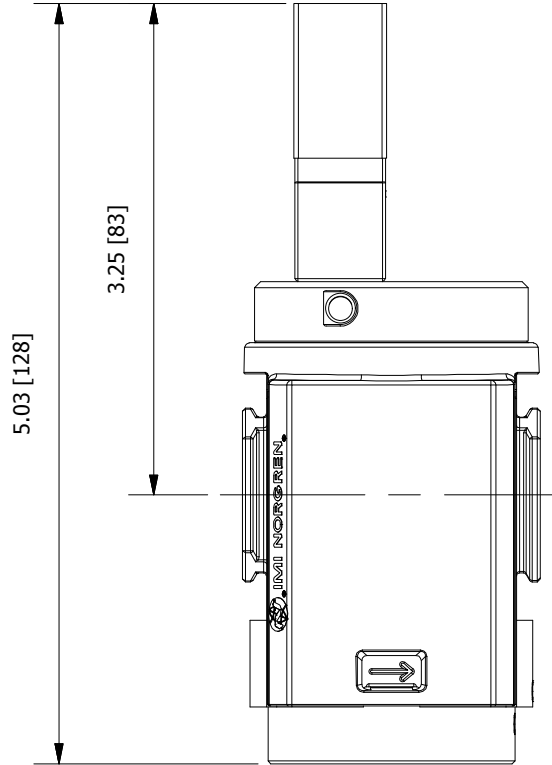
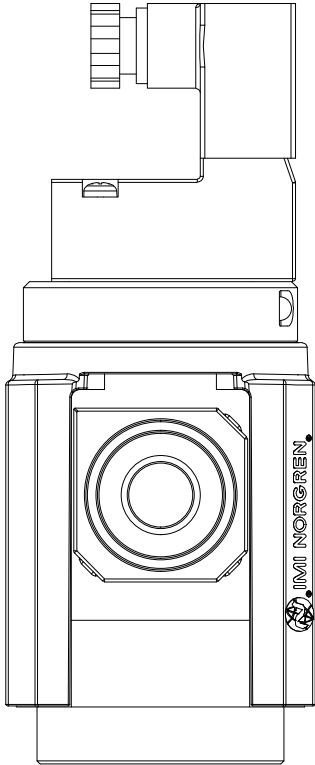
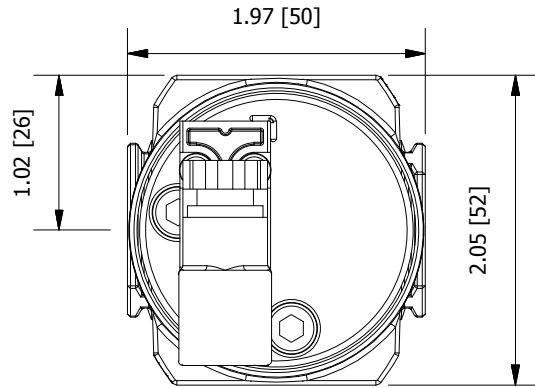

7000-42811-0000000

Plug with cable gland

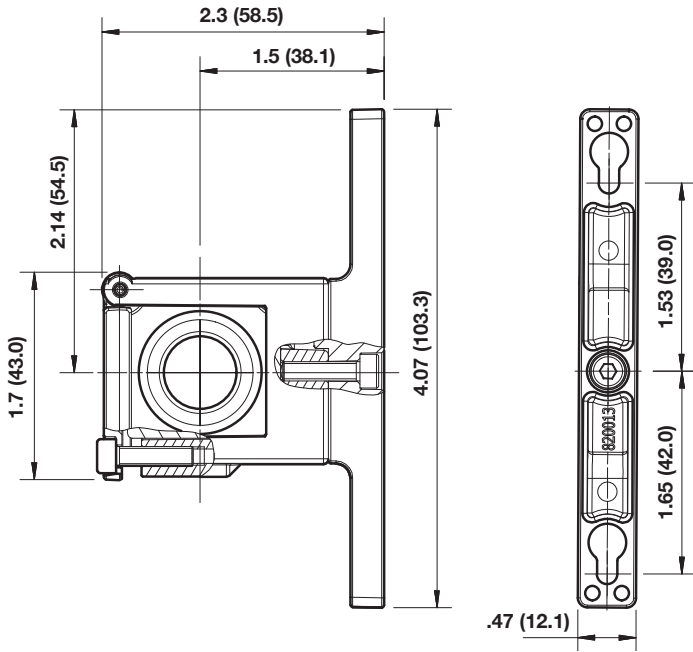

V10027-D00

Dimensions

Dimensions in mm
Projection/Third angle



1 1/4" exhaust port (NPT or ISO G)

Accessories
Quikclamp® with wall bracket

Quikclamp®

 Dimensions in inches (mm)
 Projection/Third angle
