

F82G - Excelon® Plus Modular System

General purpose filter

- > Port size: 1/4" & 3/8" (ISO G/PTF)
- > 5 or 40 micron particle and high efficiency water removal (> 95%)
- > Metal bowl with prismatic liquid level indicator lens
- > Excelon® Plus design allows in-line installation or modular installation with other Excelon® Plus products
- > Double safety lock bowl
- > Air purity classes in accordance to ISO8573-1: particles class 6 & 7 and liquid water class 8
- > Light weight polycarbonate bowl



Technical features

Medium:

Compressed air only

Maximum supply pressure:

Polycarbonate bowl:

145 psi (10 bar)

Metal bowl: 246 psi (17 bar)

Filter element:

5 µm & 40 µm

Port size:

G1/4, G3/8, 1/4 PTF, 3/8 PTF

Drain:

Manual or automatic

Flow:

48 scfm (23 dm³/s) at port size 1/4",

58 scfm (27 dm³/s) at port size 3/8",

operating pressure 91 psi (6.3 bar)

and a Δp: 7.25 psi (0.5 bar) drop

from set. Filter element: 40 µm

Automatic drain operating conditions (float operated):

Bowl pressure required to close drain: > 5 psi (0.35 bar)

Bowl pressure required to open drain: ≤ 2.9 psi (0.2 bar) Minimum air flow required to close drain: 2 scfm (1dm³/s)

Ambient/Media temperature:

Polycarbonate bowl:

14 to +140°F (-10 to +60°C)

Metal bowl:

-4 to +149°F (-20 to +65°C)

Air supply must be dry enough to avoid ice formation at temperatures below +35°F (+2°C).

Materials:

Body: Die cast aluminium

Body covers: ABS

Bowl: Transparent PC with

PP guard or die cast zinc

Liquid level indicator


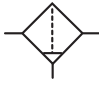
lens (metal bowl): PA

Filter element: sintered PP

Bowl "o"- ring: Chloroprene

Elastomers: NBR

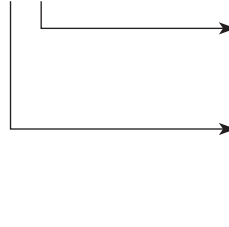
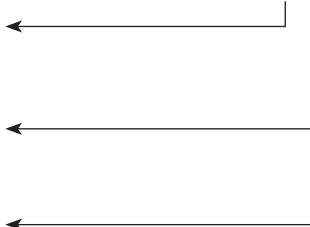
Technical data F82G—standard models

Symbol	Port Size (PTF)	Drain	Filter element (µm)	Bowl	Weight lb (kg)	Model
	1/4	Auto	40	Guarded polycarbonate	0.48 (0.22)	F82G-2AN-AP3
	3/8	Auto	40	Guarded polycarbonate	0.48 (0.22)	F82G-3AN-AP3
	1/4	Auto	40	Metal with level indicator	0.90 (0.41)	F82G-2AN-AD3
	3/8	Auto	40	Metal with level indicator	0.90 (0.41)	F82G-3AN-AD3
	1/4	Manual	40	Guarded polycarbonate	0.44 (0.20)	F82G-2AN-QP3
	3/8	Manual	40	Guarded polycarbonate	0.44 (0.20)	F82G-3AN-QP3
	1/4	Manual	40	Metal with level indicator	0.88 (0.40)	F82G-2AN-QD3
	3/8	Manual	40	Metal with level indicator	0.88 (0.40)	F82G-3AN-QD3

Option selector

F82G-★★N-★★★

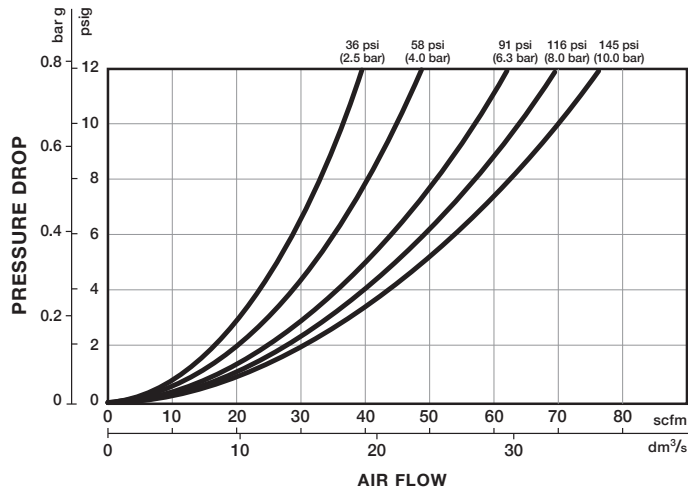
Port size	Substitute
1/4"	2
3/8"	3
Thread form	Substitute
PTF	A
ISO G	G
Drain	Substitute
Manual	Q
Auto drain	A



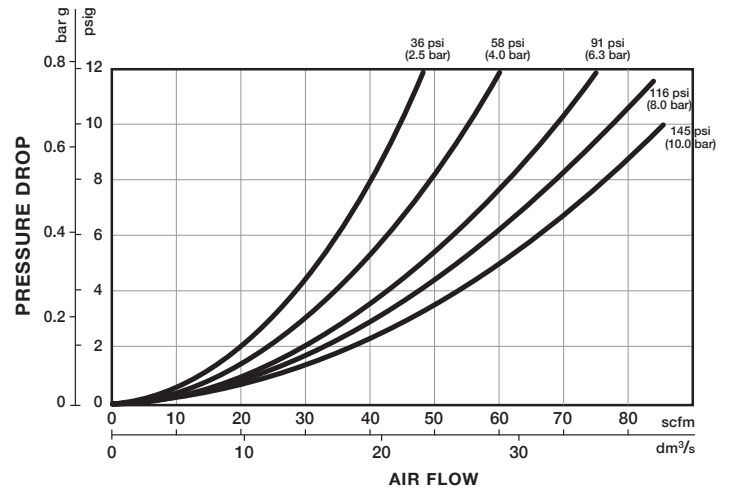
Element	Substitute
5 µm	1
40 µm	3
Bowl	Substitute
Transparent with guard	P
Metal with liquid indicator	D

Flow characteristics

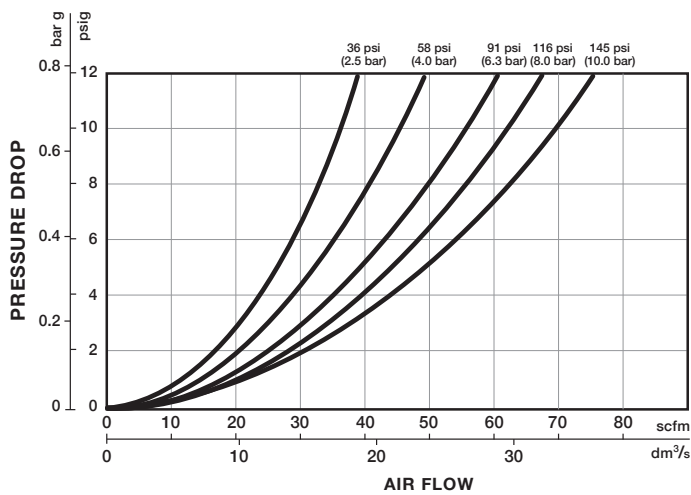
Port size: 1/4", 5 µm



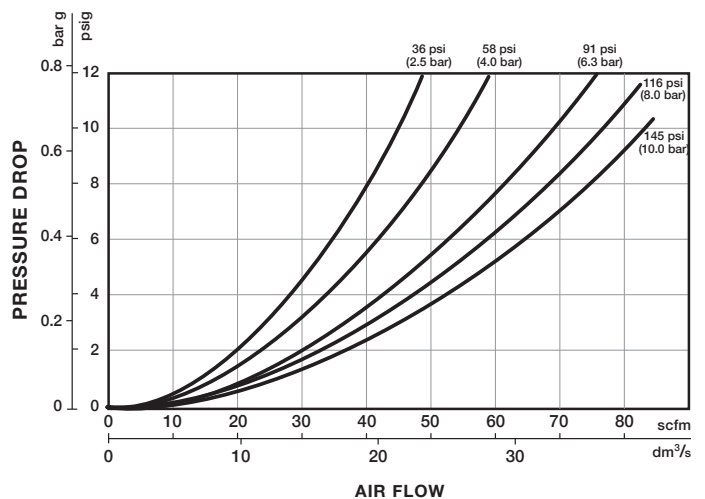
Port size: 3/8", 5 µm



Port size: 1/4", 40 µm



Port size: 3/8", 40 µm



Accessories

Wall mounting bracket



page 5

820024-50KIT

Quikclamp®



page 5

820014-51KIT

**Quikclamp®
with bracket assembled**



page 5

820014-52KIT

**Pressure sensing block
1/4 PTF**



page 5

820016-50KIT

**Pressure sensing block
G1/4**



page 5

820016-51KIT

**Full flow porting block
3/8 PTF**



page 5

page 5

page 6

820028-50KIT

**Full flow porting block
G3/8**



page 6

page 7

820028-53KIT

**Pressure switch interface
block (18D pressure switch)**



0523109000000000

**Pneumatic pressure switch
18D (0,5 ... 8 bar) *1)**



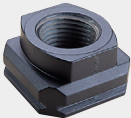
0881300000000000

**Digital pressure switch
51D(-1 ... 10 bar) *2)**



0860810000000000

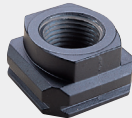
**Port Adaptors
1/4 PTF**



page 6

820015-02KIT

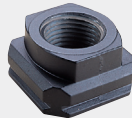
**Port Adaptors
3/8 PTF**



page 6

820015-03KIT

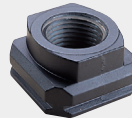
**Port Adaptors
G1/4**



page 6

820015-08KIT

**Port Adaptors
G3/8**



page 6

820015-09KIT

Maintenance/Service

**Filter cartridge
5 micron**



820038-50KIT

**Filter cartridge
40 micron**



820038-51KIT

**Auto drain kit with
metal Nut - Imperial**



6000-61KIT

**Auto drain kit with
metal Nut - Metric**



6000-60KIT

Spare parts

**Filter Bowl
(Guarded Poly bowl with
auto drain 6 mm PIF)**



820025-51KIT

**Filter Bowl
(Guarded Poly bowl
with manual drain)**



820025-50KIT

**Filter Bowl
(Metal with S/Glass
& auto drain, 6 mm PIF)**



820003-51KIT

**Filter Bowl
(Metal with S/Glass
& manual drain)**



820003-50KIT

**Filter Bowl
(Guarded Poly bowl
with auto drain, 1/4 PIF)**



820025-53KIT

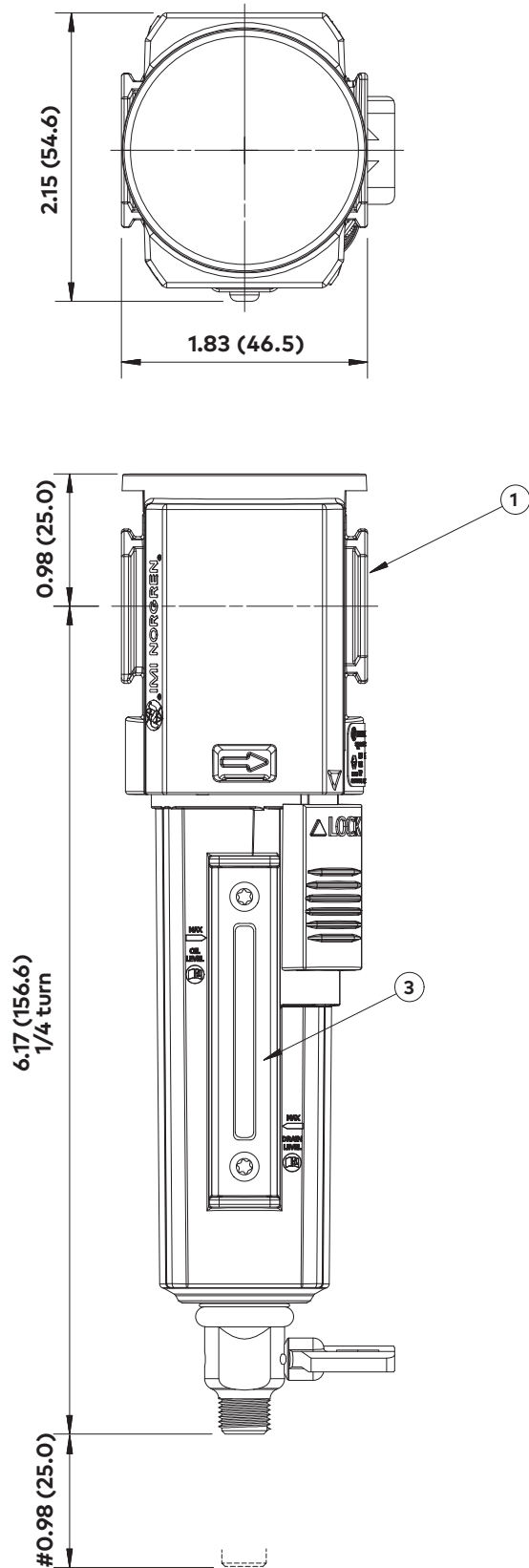
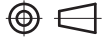
**Filter Bowl
(Metal with S/Glass
& auto drain, 1/4 PIF)**



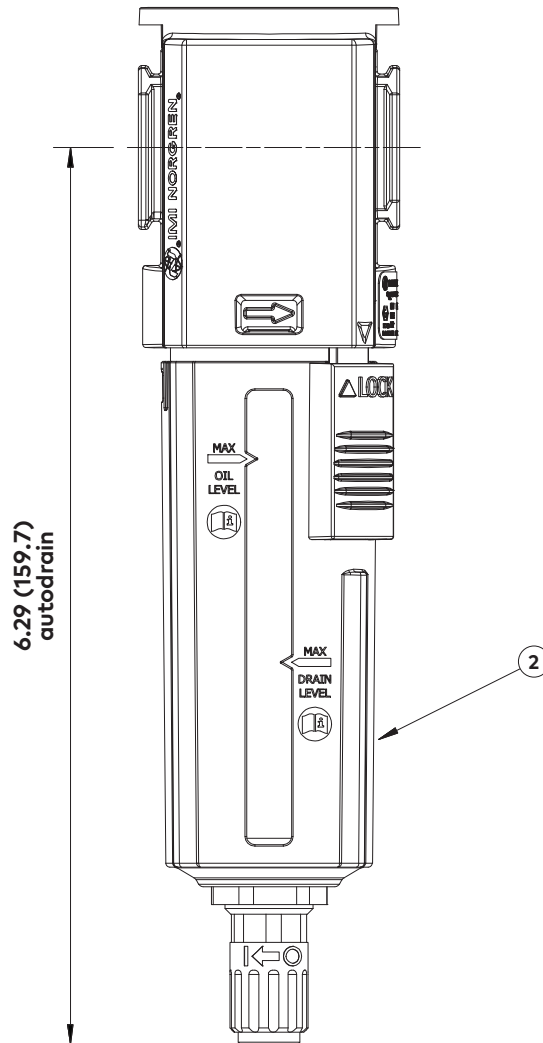
820003-56KIT

Dimensions

Dimensions in inches (mm)
Projection/Third angle

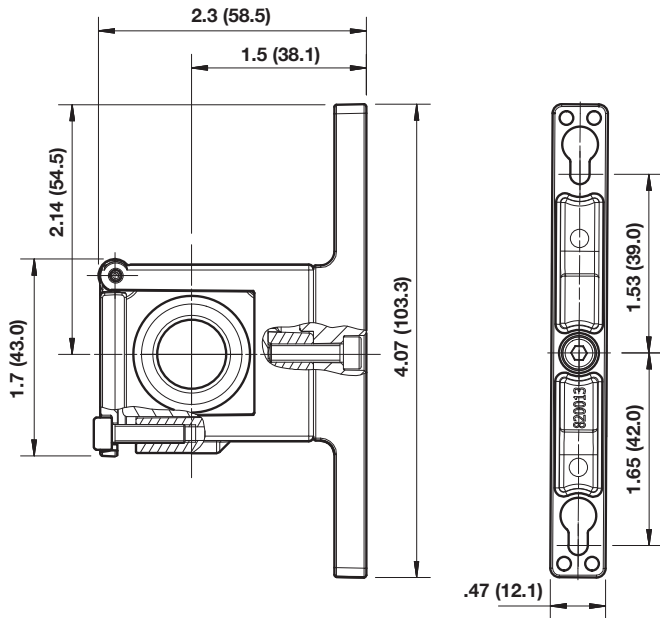


- # Minimum clearance for bowl removal
- 1 Main ports 1/4", 3/8" (ISO G/PTF)
 - 2 Transparent bowl with guard
 - 3 Metal bowl with liquid level indicator lens

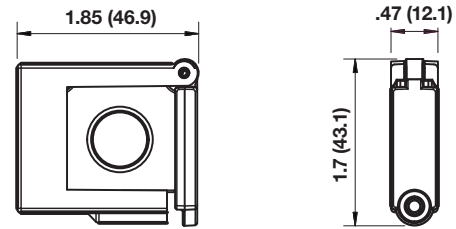


Accessories

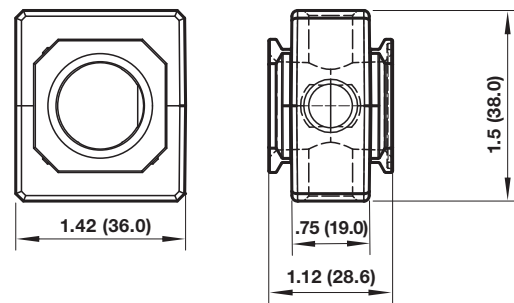
Quikclamp® with wall bracket



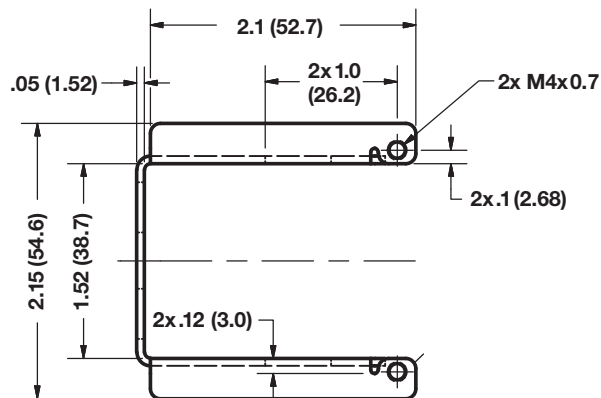
Quikclamp®



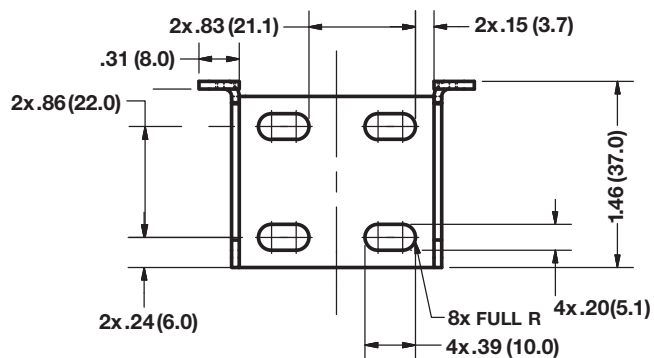
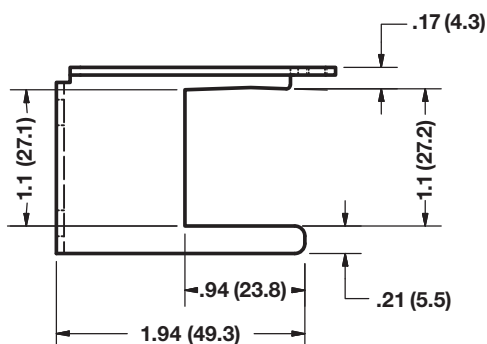
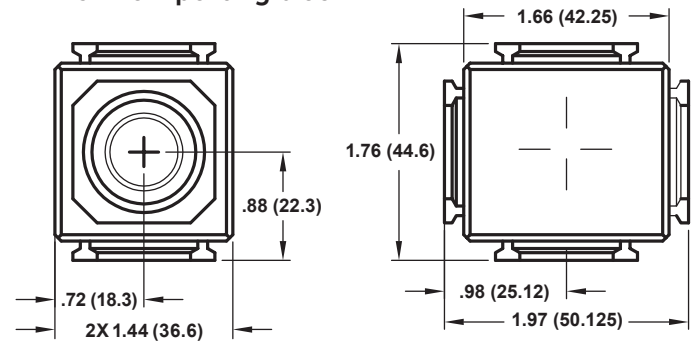
Pressure sensing block

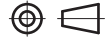


Mounting bracket

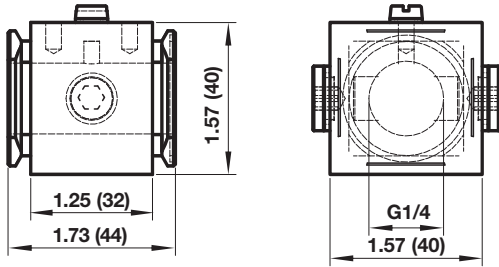


Full flow porting block

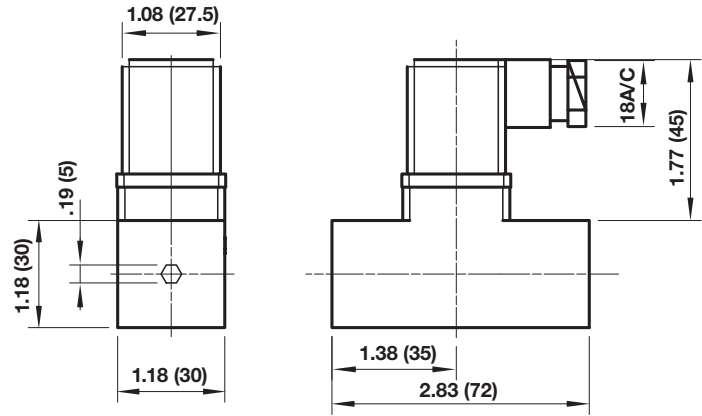




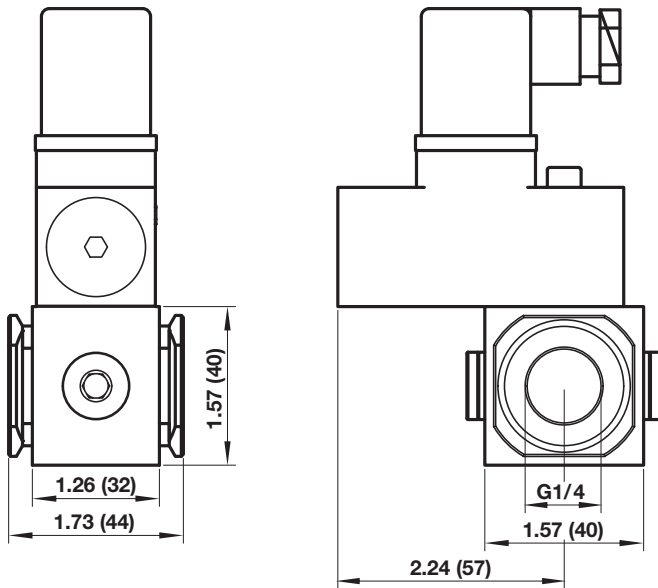
Porting block for 18D pressure switch



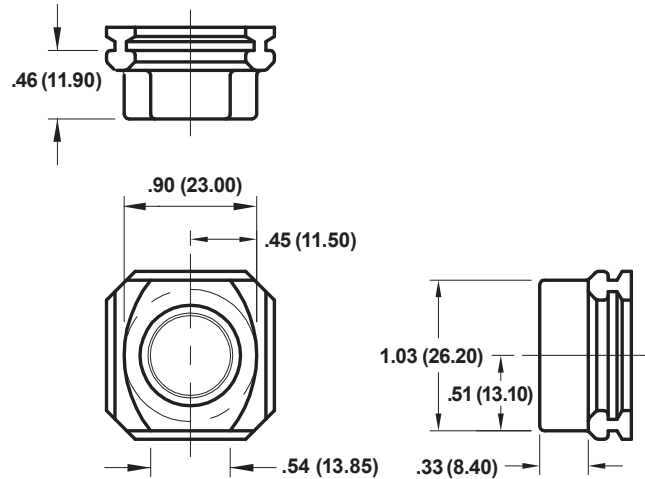
18D Pressure switch



18D Porting block and 18D assembled

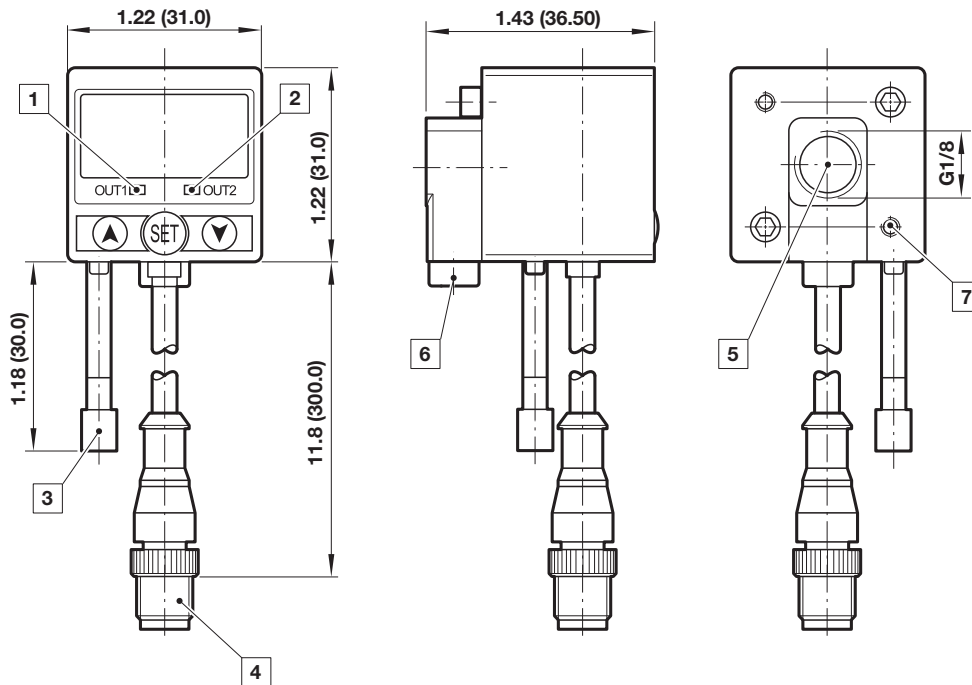


Pipe adaptor





51D Pressure switch - digital



- 1 Switch OUT 1, green LED
- 2 Switch OUT 2, red LED
- 3 Dustproof protector
- 4 Connector M12 x 1
- 5 Inlet port
- 6 Alternative inlet port G1/8 plugged
- 7 Thread for mounting screw

Warning

These products are intended for use in industrial compressed air systems only. Do not use these products where pressures and temperatures can exceed those listed under »Technical features/data«. Before using these products with fluids other than those specified, for non-industrial applications, life-support systems or other applications not within published specifications, consult IMI Precision Engineering, Norgren Ltd.

Through misuse, age, or malfunction, components used in fluid power systems can fail in various modes. The system designer is warned to consider the failure

modes of all component parts used in fluid power systems and to provide adequate safeguards to prevent personal injury or damage to equipment in the event of such failure.

System designers must provide a warning to end users in the system instructional manual if protection against a failure mode cannot be adequately provided. System designers and end users are cautioned to review specific warnings found in instruction sheets packed and shipped with these products.