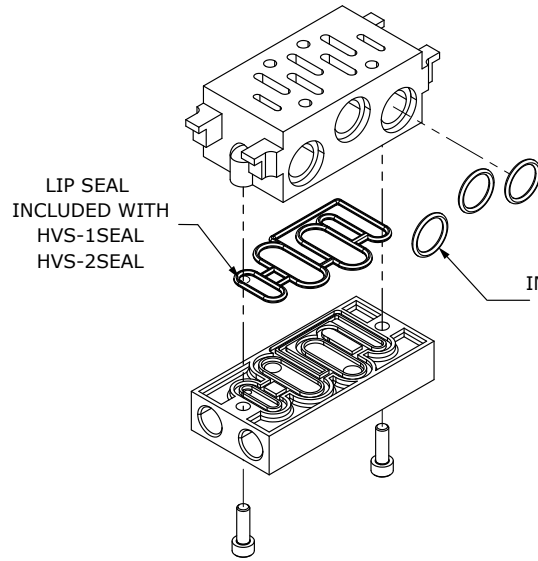
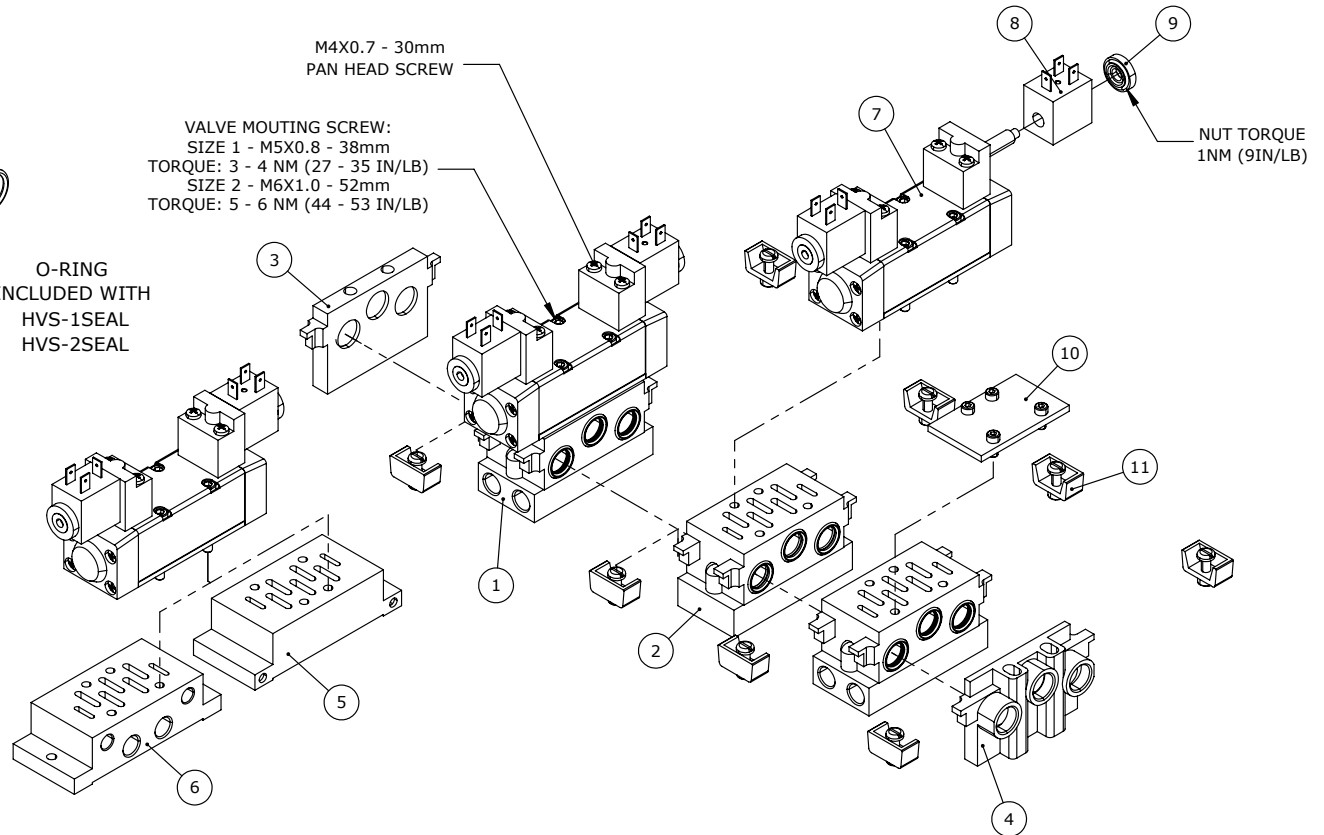


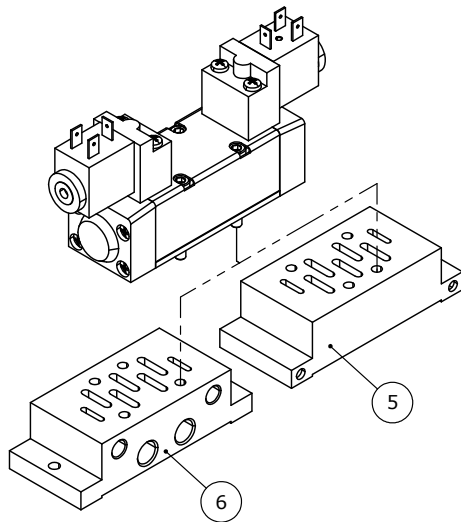
**MANIFOLD
BASE COMPONENTS**
(COMES PRE-ASSEMBLED)



**MANIFOLD
BASE SAMPLE ASSEMBLY**



**STAND ALONE
BASE OPTIONS**

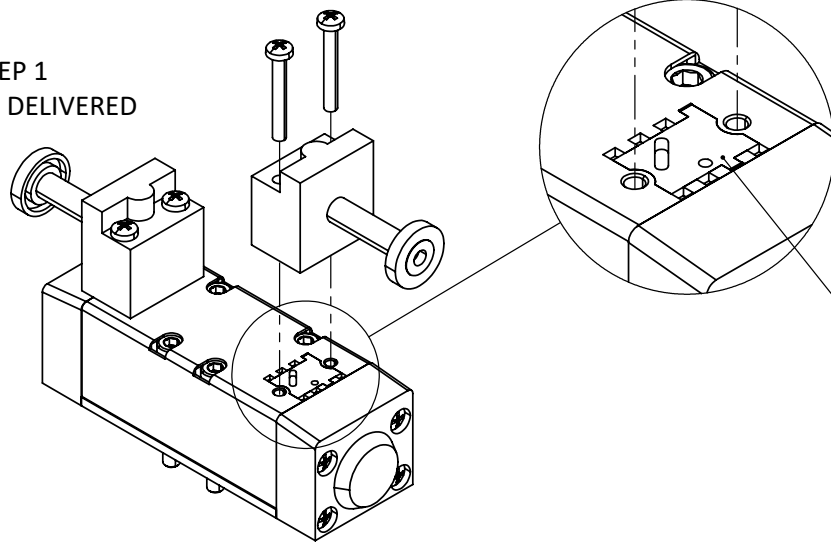


VALVE PILOT PORTS ARE IDENTIFIED WITH -12 OR -14. THESE PORTS ARE LOCATED ON ONE END, SIDE, OR BOTTOM OF THE BASE

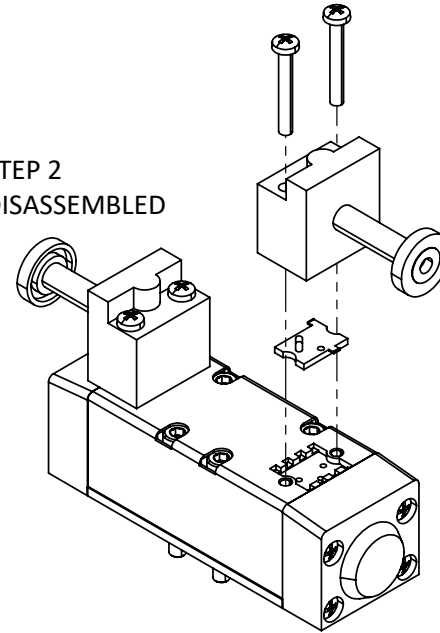
ISO 5599 MANIFOLD/BASE/VALVES	
1	MANIFOLD SIDE ORIENTATION
2	MANIFOLD BOTTOM ORIENTATION
3	MANIFOLD BLIND END PLATE
4	MANIFOLD INLET
5	STAND ALONE BASE BOTTOM ORIENTATION
6	STAND ALONE BASE SIDE ORIENTATION
7	SOLENOID VALVE
8	SOLENOID COIL
9	COIL NUT
10	MANIFOLD BLANK PLATE
11	MANIFOLD ATTACHING KIT

TO OPERATE THE VALVE AT AN OPERATING PRESSURE (PORT 1) BELOW THE MINIMUM PILOT PRESSURE, REMOVE THE PILOT VALVE AND REVERSE THE PILOT GASKET.

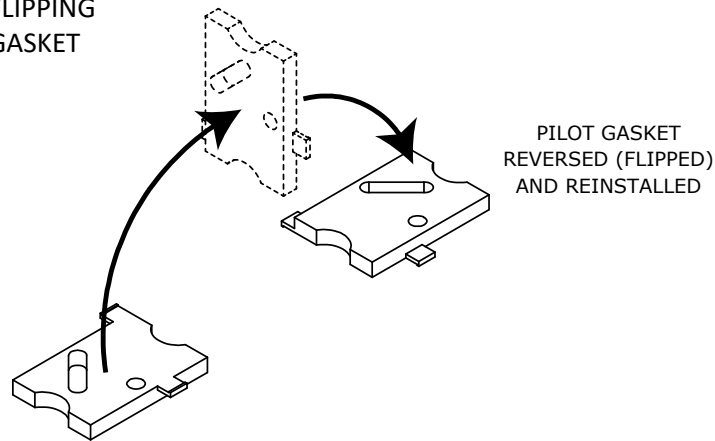
STEP 1
AS DELIVERED



STEP 2
DISASSEMBLED



STEP 3
FLIPPING
GASKET



PILOT GASKET
FACTORY

STEP 4
REINSTALL
GASKET

