

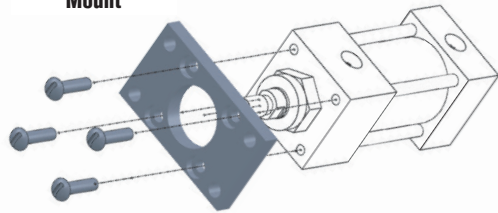
# Pneumatic Cylinders - D-Series Mounting Options

## Front or Rear Flange Mount (MF1 or MF2)

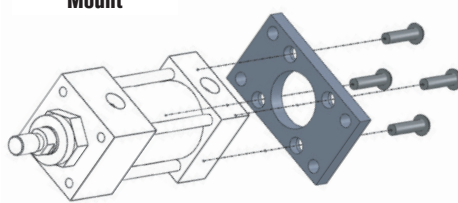
For Front or Rear Flange mounting, use the Flange Mount Kit. Use the chart below to select the correct Flange mount for your D-Series cylinder. Use the drawings below for installation reference.

Part Number	Description	Bore Size	Bolt Size	Torque
<b>DFM-1</b>	Aluminum Flange Mount Kit	1½"	¼ -28 SHCS x ¾" Long	57 in/lbs.
<b>DFM-2</b>	Aluminum Flange Mount Kit	2"	5/16 - 24 RHCS x ¾" Long	86 in/lbs.
<b>DFM-3</b>	Aluminum Flange Mount Kit	2½"		
<b>DFM-4</b>	Steel Flange Mount Kit	3¼"	¾ - 24 HHCS x 5/8" Long	157 in/lbs.
<b>DFM-5</b>	Steel Flange Mount Kit	4"		

**Front Flange Mount**



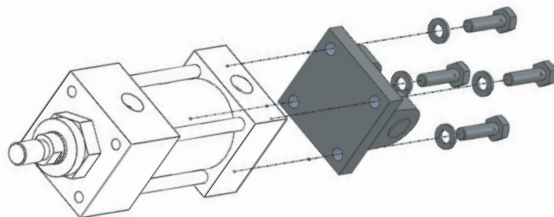
**Rear Flange Mount**



## Rear Clevis Mount (MP2)

For Rear Clevis mounting, use the Rear Clevis Mount Kit. Use the chart below to select the correct Rear Clevis mount for your D-Series cylinder. Use the drawing below for installation reference.

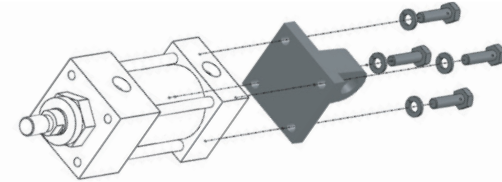
Part Number	Description	Bore Size	Bolt Size	Torque
<b>DPC-1</b>	Aluminum Rear Clevis Mount Kit	1½"	¼ -28 SHCS x 7/8" Long	57 in/lbs.
<b>DPC-2</b>	Aluminum Rear Clevis Mount Kit	2"	5/16 - 24 HHCS x 7/8" Long	86 in/lbs.
<b>DPC-3</b>	Aluminum Rear Clevis Mount Kit	2½"		
<b>DPC-4</b>	Aluminum Rear Clevis Mount Kit	3¼"	¾ - 24 HHCS x 1¼" Long	157 in/lbs.
<b>DPC-5</b>	Aluminum Rear Clevis Mount Kit	4"		



## Rear Pivot Mount (MP4)

For Rear Pivot mounting, use the Pivot Attachment Kit. Use the chart below to select the correct Pivot Attachment for your D-Series cylinder. Use the drawing below for installation reference.

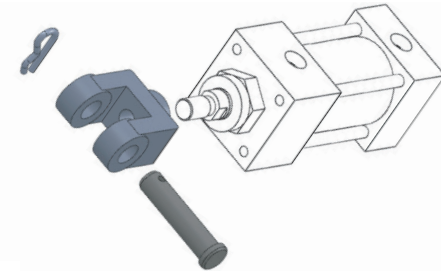
Part Number	Description	Bore Size	Bolt Size	Torque
<b>DPA-1</b>	Aluminum Pivot Attachment Mount Kit	1½"	¼ -28 SHCS x 7/8" Long	57 in/lbs.
<b>DPA-2</b>	Aluminum Pivot Attachment Mount Kit	2"		
<b>DPA-3</b>	Aluminum Pivot Attachment Mount Kit	2½"	¾ - 24 HHCS x 1¼" Long	157 in/lbs.
<b>DPA-4</b>	Aluminum Pivot Attachment Mount Kit	3¼"		
<b>DPA-5</b>	Aluminum Pivot Attachment Mount Kit	4"		



## Rod Clevis

For Rod Clevis assembly, use the Rod Clevis Kit. Use the chart below to select the correct Rod Clevis for your D-Series cylinder. Use the drawing below for installation reference.

Part Number	Description	Bore Size	Torque
<b>DRC-2</b>	Steel Rod Clevis Kit	1½"	361 in/lbs.
		2"	
		2½"	
<b>DRC-4</b>	Steel Rod Clevis Kit	3¼"	1,230 in/lbs.
		4"	



## Rod Eye

For Rod Eye assembly, use the Rod Eye. Use the chart below to select the correct Rod Eye for your D-Series cylinder. Use the drawing below for installation reference.

Part Number	Description	Bore Size	Torque
<b>DRE-1</b>	Steel Rod Eye	1½"	361 in/lbs.
		2"	
		2½"	
<b>DRE-2</b>	Steel Rod Eye	3¼"	1,230 in/lbs.
		4"	

