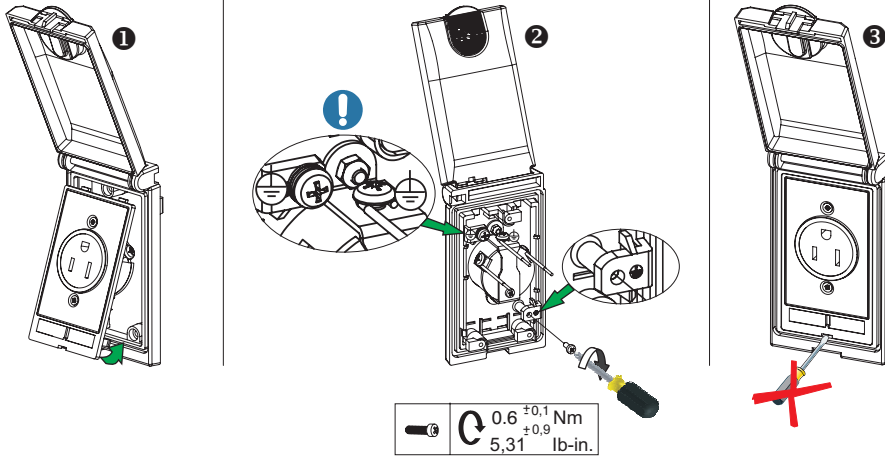
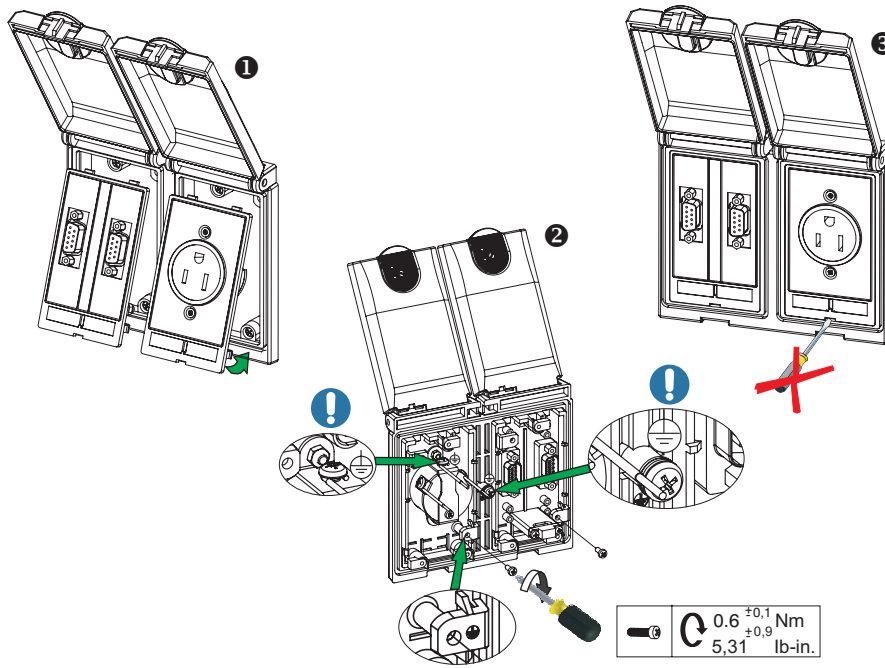


Frame single version



Frame double version



4000-68000-3240000

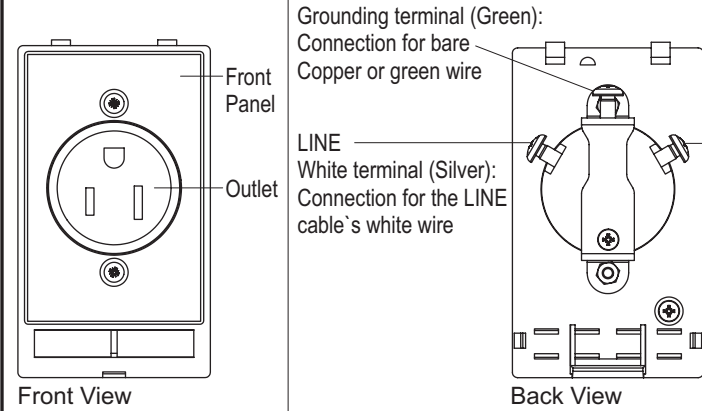
V 1.0 pa/nm

Murrelektronik GmbH

Postfach 1165  
Falkenstraße 3  
Info@murrelektronik.com

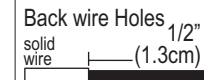
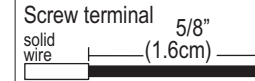
D-71567 Oppenweiler  
D-71570 Oppenweiler  
http://www.murrelektronik.com

Telefon +49(0)7191/47-0  
Telefax +49(0)7191/47-130



**Screw terminal (colors):**  
Green = grounding terminal  
Silver = white terminals  
Brass = hot terminals

**About wire connections:**



**Side Wire**  
Clockwise, 2/3  
of the way  
around screw

**Important:** This document only describes the installation of the MSDD. Additional information, and the safety instructions are to be found in Data sheets.

**⚠ DANGER ⚡**

**HAZARDOUS VOLTAGE**  
Disconnect all power before servicing equipment. Electric shock will result in death or serious injury.

The installation and wiring of the NEMA 5-15/US/UL, should be accomplished only by qualified technical personnel in accordance to all guidelines and relevant standards. Failure to do so or improper use of the product will invalidate any liability.

Connecting terminals of the plug socket (device inside) aren't finger-safe. IP 00-mortal danger!

Use this NEMA 5-15/US/UL receptacle with copper or copper-clad wire. Do not use it with aluminium wire.

For installation in wet locations, protect the NEMA 5-15/US/UL receptacle with a weatherproof cover that will keep both the receptacle and any plugs dry.

Must be installed in accordance with national and local electrical codes.

Murrelektronik GmbH

Postfach 1165  
Falkenstraße 3  
Info@murrelektronik.com

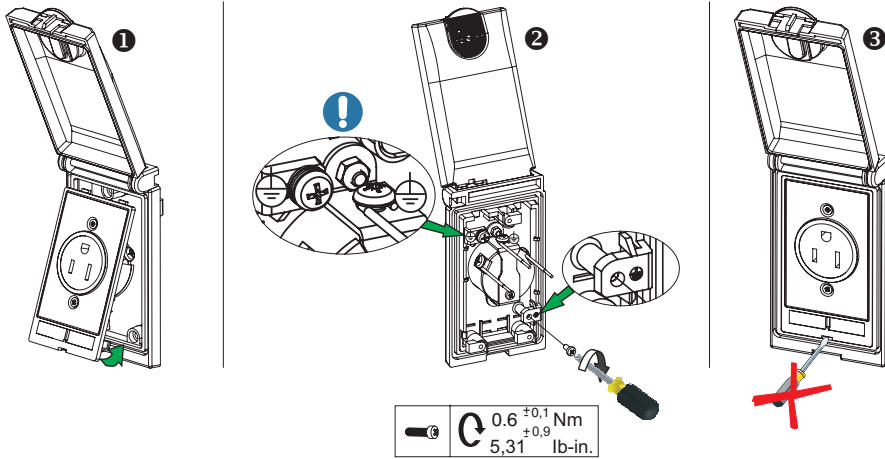
D-71567 Oppenweiler  
D-71570 Oppenweiler  
http://www.murrelektronik.com

Telefon +49(0)7191/47-0  
Telefax +49(0)7191/47-130

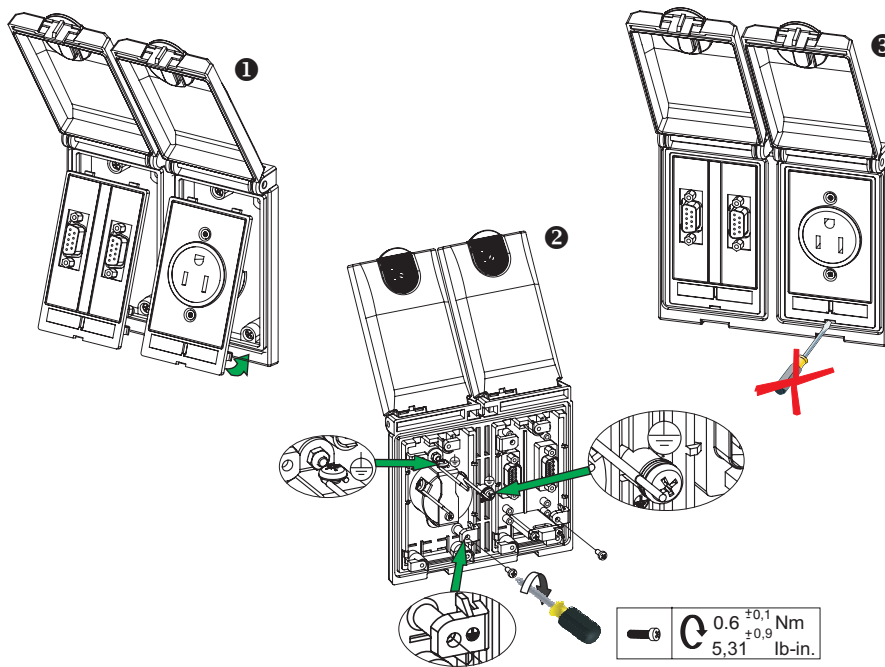
We reserve the right to change this specification Documents downloaded by the EDP system and/or printed out have only an informative character and are not subject to the updating service

We reserve the right to change this specification Documents downloaded by the EDP system and/or printed out have only an informative character and are not subject to the updating service

Frame single version



Frame double version



4000-68000-3240000

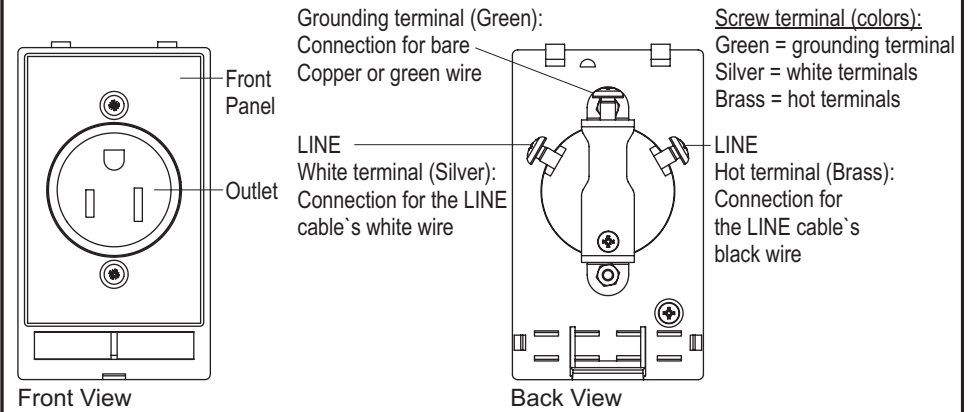
V 1.0 pa/nm

Murrelektronik GmbH

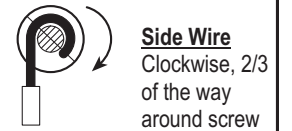
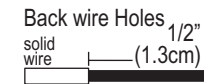
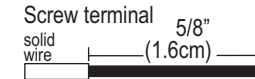
Postfach 1165  
Falkenstraße 3  
Info@murrelektronik.com

D-71567 Oppenweiler  
D-71570 Oppenweiler  
http://www.murrelektronik.com

Telefon +49(0)7191/47-0  
Telefax +49(0)7191/47-130



**About wire connections:**



We reserve the right to change this specification Documents downloaded by the EDP system and/or printed out have only an informative character and are not subject to the updating service

**Important:** This document only describes the installation of the MSDD. Additional information, and the safety instructions are to be found in Data sheets.

<b>⚠ DANGER ⚡</b>		
<p><b>HAZARDOUS VOLTAGE</b> Disconnect all power before servicing equipment. Electric shock will result in death or serious injury.</p>	<p>The installation and wiring of the NEMA 5-15/US/UL, should be accomplished only by qualified technical personnel in accordance to all guidelines and relevant standards. Failure to do so or improper use of the product will invalidate any liability.</p>	<p>Connecting terminals of the plug socket (device inside) aren't finger-safe. IP 00-mortal danger!</p>
<p>Use this NEMA 5-15/US/UL receptacle with copper or copper-clad wire. Do not use it with aluminium wire.</p>	<p>For installation in wet locations, protect the NEMA 5-15/US/UL receptacle with a weatherproof cover that will keep both the receptacle and any plugs dry.</p>	<p>Must be installed in accordance with national and local electrical codes.</p>

Murrelektronik GmbH

Postfach 1165  
Falkenstraße 3  
Info@murrelektronik.com

D-71567 Oppenweiler  
D-71570 Oppenweiler  
http://www.murrelektronik.com

Telefon +49(0)7191/47-0  
Telefax +49(0)7191/47-130