

AUTOMATIONDIRECT.com **INSTALLATION INSTRUCTIONS**
AR-1C-120A & ARX-2C-120A
ALTERNATING RELAYS

January, 2010

901-0000-283 Rev B

READ INSTRUCTIONS BEFORE INSTALLING OR OPERATING THIS DEVICE. KEEP FOR FUTURE REFERENCE.

Warning

Potentially hazardous voltages are present. Turn off all power supplying this equipment before connecting or disconnecting wiring.

Installation & Wiring

1. Mount the appropriate 8 pin octal socket (70169-D or 750-2C-SKT) in an enclosure.
2. Wire the socket per Diagram 1 or Diagram 2. Any type of switch (float manual, timing relay, pressure, or one with an isolated contact) can be used.

NOTE: If you are using the same Control Voltage for both the Alternating Relay and the two loads, you must add a jumper between Terminals 1 & 5 on the AR-1C-120A. If using multiple switches on the ARX-2C-120A, check to see the proper sequence of switch closures is followed, i.e., LEAD before LAG, STOP before LEAD, etc.

3. Set the low-profile selector switch to "ALTERNATE" for normal operation. In this mode, the unit will operate as a normal Alternating Relay, alternating between the two loads on each subsequent closing and open of the control switch. Setting the selector switch to either "LOAD A" or "LOAD B" will lock the unit to either one of the loads. By locking the Alternating Relay to one load, the other load can be removed for service without rewiring the first load for continuous operation.
4. Plug into socket.

WARNING: When the selector switch is locked in either the LOAD A or LOAD B position, it does not disconnect voltage from the equipment to be serviced.

Installation & Wiring

If the unit fails to operate properly, check that all connections are correct per Diagram 1 or Diagram 2. If you still need assistance, please call us at 770-844-4200. Our Technical Support Group is glad to work with you in answering your questions. They are available Monday through Friday from 9:00 A.M. to 6:00 P.M. Eastern Standard Time.

Specifications

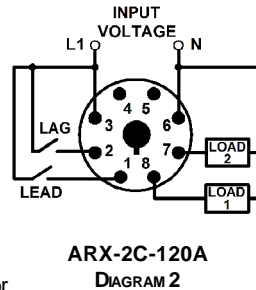
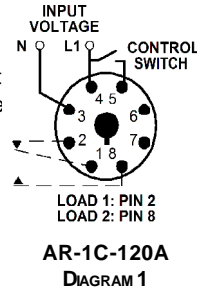
Temperature: -28° to 65° C (-18° to 149° F)
 Output Contacts: 10A@240V AC/30V DC, 1/2HP@120/240V AC (N.O), 1/3HP@120/240V AC (N.C.)

Warranty

These products are warranted to be free from defects in workmanship or material under normal service and use for a period of five (5) years from date of manufacture.

Automation Direct Inc.

3505 Hutchinson Road, Cumming, GA 30040 u (770) 844-4200 u www.automationdirect.com



AUTOMATIONDIRECT.com **INSTALLATION INSTRUCTIONS**
AR-1C-120A & ARX-2C-120A
ALTERNATING RELAYS

January, 2010

901-0000-283 Rev B

READ INSTRUCTIONS BEFORE INSTALLING OR OPERATING THIS DEVICE. KEEP FOR FUTURE REFERENCE.

Warning

Potentially hazardous voltages are present. Turn off all power supplying this equipment before connecting or disconnecting wiring.

Installation & Wiring

1. Mount the appropriate 8 pin octal socket (70169-D or 750-2C-SKT) in an enclosure.
2. Wire the socket per Diagram 1 or Diagram 2. Any type of switch (float manual, timing relay, pressure, or one with an isolated contact) can be used.

NOTE: If you are using the same Control Voltage for both the Alternating Relay and the two loads, you must add a jumper between Terminals 1 & 5 on the AR-1C-120A. If using multiple switches on the ARX-2C-120A, check to see the proper sequence of switch closures is followed, i.e., LEAD before LAG, STOP before LEAD, etc.

3. Set the low-profile selector switch to "ALTERNATE" for normal operation. In this mode, the unit will operate as a normal Alternating Relay, alternating between the two loads on each subsequent closing and open of the control switch. Setting the selector switch to either "LOAD A" or "LOAD B" will lock the unit to either one of the loads. By locking the Alternating Relay to one load, the other load can be removed for service without rewiring the first load for continuous operation.
4. Plug into socket.

WARNING: When the selector switch is locked in either the LOAD A or LOAD B position, it does not disconnect voltage from the equipment to be serviced.

Installation & Wiring

If the unit fails to operate properly, check that all connections are correct per Diagram 1 or Diagram 2. If you still need assistance, please call us at 770-844-4200. Our Technical Support Group is glad to work with you in answering your questions. They are available Monday through Friday from 9:00 A.M. to 6:00 P.M. Eastern Standard Time.

Specifications

Temperature: -28° to 65° C (-18° to 149° F)
 Output Contacts: 10A@240V AC/30V DC, 1/2HP@120/240V AC (N.O), 1/3HP@120/240V AC (N.C.)

Warranty

These products are warranted to be free from defects in workmanship or material under normal service and use for a period of five (5) years from date of manufacture.

Automation Direct Inc.

3505 Hutchinson Road, Cumming, GA 30040 u (770) 844-4200 u www.automationdirect.com

