



Introduction

Overview

This guide contains LookoutDirect installation instructions and an introduction to LookoutDirect's features and functionality. It includes general information to help acquaint you with important elements of LookoutDirect and tutorial exercises that introduce you to the basics of building a Lookout process.

Document Conventions

The following document conventions are used in this manual.

»	Indicate the path for nested menu and command selections. Example: Start » Programs » xxx
	Indicates a tip that provides helpful information related to the current procedure or topic.
	Indicates a important supplementary information pertinent to the current procedure or topic.
	Denotes a caution statement. Failure to follow the guidance provide in the caution statement could result in a loss of data or an interruption to a critical process being controlled or monitored by LookoutDirect.
bold face text	Denotes the name of dialog boxes, property sheet items, application features, and menu commands that you select as part of a procedure.
<i>italic</i>	Denotes references to dialog boxes, property sheet items, application features, and menu commands that are not part of the current procedure, or key concepts.
monospace	Denotes characters that you enter from the keyboard, code/syntax examples. The monospace font is also used to express proper names of disk drives, paths, directories, programs, subprograms, subroutines, device names, functions, operations, variables, filenames and extensions.

Related Documentation

The following documents are cross-referenced in this guide.

- *LookoutDirect Developer's Manual*
Provides in-depth coverage of LookoutDirect functionality including LookoutDirect services.
- *LookoutDirect Object Reference Manual*
Contains detailed description of all LookoutDirect system and driver objects. The *Object Reference Manual* can be found in the documentation directory of the LookoutDirect CD-ROM in Portable Document Format (PDF). To view this file, you must have Adobe Acrobat Reader 3.0 or later installed. If you do not have Adobe Acrobat Reader installed, you can install it from the LookoutDirect documentation directory or from the Adobe web site at www.adobe.com.

Installation

Development and Runtime Applications

The LookoutDirect software is available in both a development and runtime version.

- **PC-LKD-DEV** contains both the LookoutDirect development application and one license for the runtime application.
- **PCD-LKD-RTE** contains only a single license for the LookoutDirect runtime application. The runtime version can only be used to run compiled process files that have been developed using the PC-LKD-DEV application.

Package Contents

The application package should contain the following items:

- CD-ROM
- Hardware key
- Getting Started Guide
- Developers's Manual
- Object Reference Manual
- Registration Card

If you are missing any of the items listed above, contact Automation Direct at 1-770-844-4200.

About the Hardware Key

In order to run *LookoutDirect*, you must install the hardware key provided onto the parallel port of the PC running *LookoutDirect* (development or runtime version). The hardware keys provided with the development and runtime version are not interchangeable. Each hardware key is matched to the software licence number of the application it is provided with.

System Requirements

Development Systems

- Pentium 133 MHz or faster
- Windows 95/98/NT
- 32 MB RAM
- 100 MB available hard disk space
- CD-ROM drive
- 640 x 480 color monitor

Runtime System

- Pentium 133 MHz or faster
- Windows 95/98/NT
- 32 MB RAM
- 100 MB available hard disk space
- CD-ROM (optional if you have a network)
- 640 x 480 color monitor or flat-panel display for HMI

Installing *LookoutDirect*

To install the application:

1. Insert the Product Showcase CD into your CD-ROM drive.
If autorun is enabled on your system, the DirectSOFT32 window will appear and you can skip to step 4.
2. From the **Start** menu, select **Run**.
3. Type `x:\setup.bat` substituting "X" with the letter designation of your CD-ROM drive, and click **OK**.

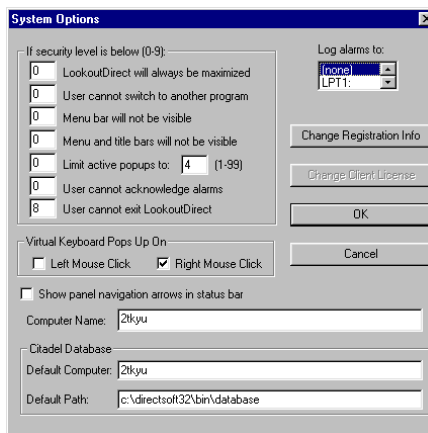
4. From the DirectSoft32 window, select **Install Software**.
5. In the password dialog, enter the 16-digit product key that corresponds to your software license. The product key can be found on back of the Product Showcase CD case. The product key is case-sensitive and requires hyphens. The **OK** button becomes available when you enter a valid product key.
6. Click **OK**.
The password dialog box appears.
7. Press CTRL + V to paste the product key, which you entered previously, into the password text box. The **OK** button becomes available when you enter a valid product key.
8. Click **Continue**.
The LookoutDirect setup window and **Welcome** dialog box appears.
9. Follow the LookoutDirect setup instruction that appear on the screen.
When the LookoutDirect setup is complete, the NI Logos Installation Wizard appears. NI Logos is used to install third-party application components that are licensed to AutomationDirect.
10. Follow the NI Logos Installation Wizard instructions.
When the NI Logos installation is complete, the LookoutDirect installation screen returns
11. Select to view the readme file or launch LookoutDirect.

Setting System Options

Once *LookoutDirect* is installed, make adjustments to the system settings. Access to the system settings is based on the security level assigned to each process by the Administrator. Contact your system administrator for assistance if you cannot access or make changes to a system setting.

1. Select **Options » System**.

The **System Options** dialog box appears. Some default settings may be different for your computer.



2. Select option you want, and then click **OK**.



Note Only users logged on with security levels or 9 or greater can change system options.

Computer Name Setting

The computer name field shows the network name of the computer you are working on. If this field is blank, and you intend to use the networking capability of *LookoutDirect*, you need to check your network settings to make sure your computer is properly named for network operations.

Citadel Database Settings

The **Citadel Database** fields set the default destination for Citadel data logged by *LookoutDirect*. All processes running under a single instance of *LookoutDirect* will use this data path to log data to Citadel, unless you override this setting when you create the process.

You set the **Default path** and the **Default computer** separately. Use the complete path name for the **Default path** setting, and the fully qualified computer name for the **Default computer** setting.

Virtual Keyboard Settings

LookoutDirect features a virtual keyboard that you can access when in run mode by clicking on a control that accepts a text or numeric input. You can set whether a right-click or a left-click pops up this keyboard in the **Virtual Keyboard Pops Up On** field in the **System Options** dialog box.

Log Alarms Setting

If you have a printer directly connected to your computer, you can direct that all alarms can be printed when they occur. Set the **Log alarms to** box in the **System Options** dialog box to the communications port to which your printer is connected. See Chapter 9, *Alarms*, in the *LookoutDirect Developer's Manual* for information on the alarm and event logging features of *LookoutDirect*. You can also capture a network printer port on Windows 98/95 machines. Consult your operating system documentation for information on this procedure.

Security Level Settings

You can set local limits on how *LookoutDirect* runs when users with different security levels are logged on. Use the **If security level is below:** selection boxes in the **System Options** dialog box to set these limits. See Chapter 6, *Security*, in the *LookoutDirect Developer's Manual* for full details on the security features of *LookoutDirect*.

Panel Navigation Arrows

Select the **Show panel navigation arrows in status bar** check box if you want to use panel navigation arrows. These arrows, located in the right side of the status bar, activate control panels in the order in which you last accessed them. This feature is most convenient when you have a large number of control panels in a process and need to cycle through a subset of them several times in a short period of time.

Startup Process File Setting

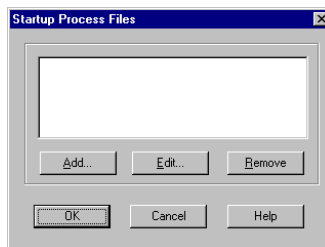
If your computer runs *LookoutDirect* 24 hours a day, you may want to ensure that the system can automatically reboot and begin executing your processes in the event power to the system is lost and later restored.



Note In order for the startup file settings to work, *LookoutDirect* must be setup in Windows as a startup application. Refer to your Windows documentation for information on enabling startup applications.

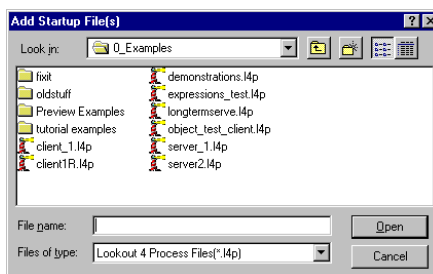
1. Select **Options » Startup**.

The **Startup Process Files** dialog appears.



2. Click **Add**.

The **Add Startup Files** dialog box appears.



3. Navigate to, and then select the process file(s) you want to run when power is restored to the system running *LookoutDirect*.

You can add as many process files as you want. The files will open in the order in which they are entered in the **Startup Process Files** dialog box.

To edit a path name to a file, highlight the file name and click on the **Edit** button.

