



Extended Rotary Handle : HPX1(2,3)-EHRN3R-GY1(3)

Applicable Manual Motor Starter : HMMP-32HR, HMMP-63HR, HMMP-100HR

SAFETY PRECAUTION

Customers, engineers, operators should read this instruction carefully before starting all worked with this product.

* In this instruction, The level of danger distinguishes as 'DANGER' and 'CAUTION'.

⚠ DANGER : To failure to follow the message may results death or serious injury.

⚠ CAUTION: To failure to follow the message may results minor injury or physical damage.

⚠ DANGER

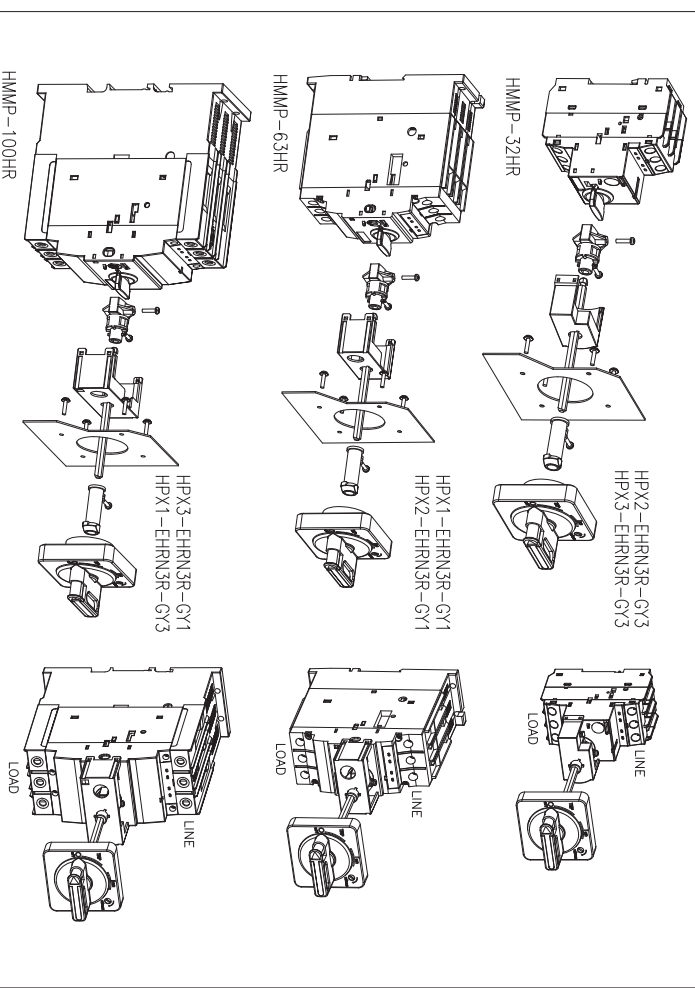
* Turn off the power before starting mounting, dismantling, wiring, maintenance or inspection.

Failure to do may results in an electric shock or burning

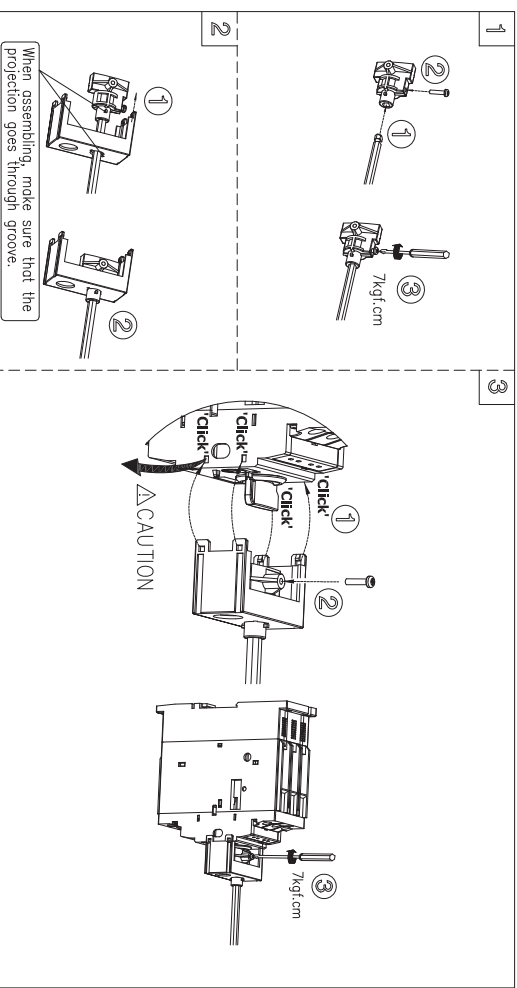
⚠ CAUTION

1. Do not use deformed or damaged HMMP or operating handle.
2. Mounting, detaching, wiring, maintaining and checking should be done by an authorized or certified person.
3. HMMP and operating handle should not be used in severe environment such as high temperature, high humidity dusty, corrosive gas, excessive vibration and impulse they may result in fire or malfunction.
4. Mounting should be done according to the instruction manual Failure to mount may cause malfunction of HMMP and operating handle or cause an incident which may makes the operator hurt.
5. Screws should be tightened in specific torque.
6. Dust preventing measures should be done, if the HMMP and operating handle are used in dusty places such as cement plants, iron refinaries. It may results in poor contacts, defective release action or malfunction of the device.
7. Don't do reforming HMMP and operating handle whitout authorized permission.
8. When HMMP and operating handle need to be abolished, do it according to the proper abolishing rules or regulations.

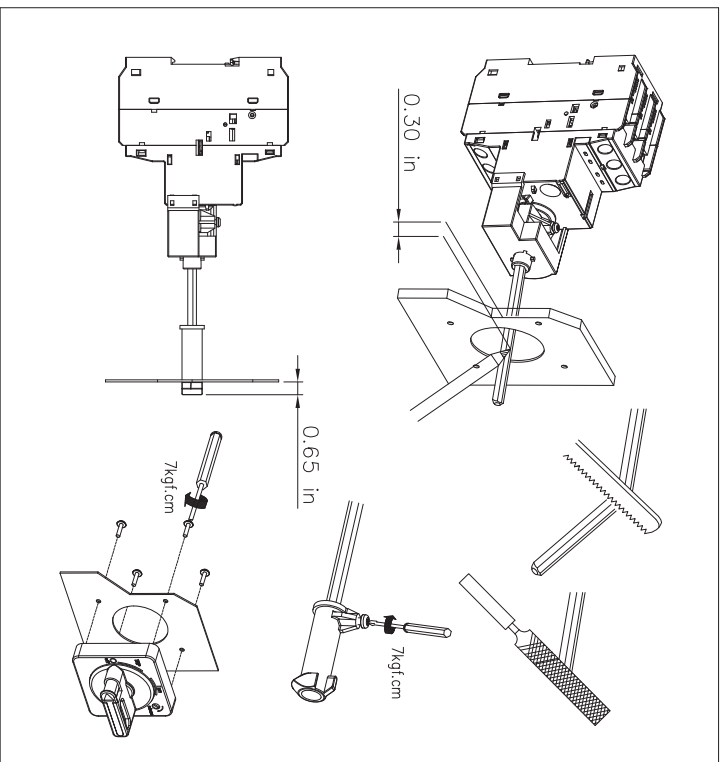
1. HMMP and Extended Rotary Handle



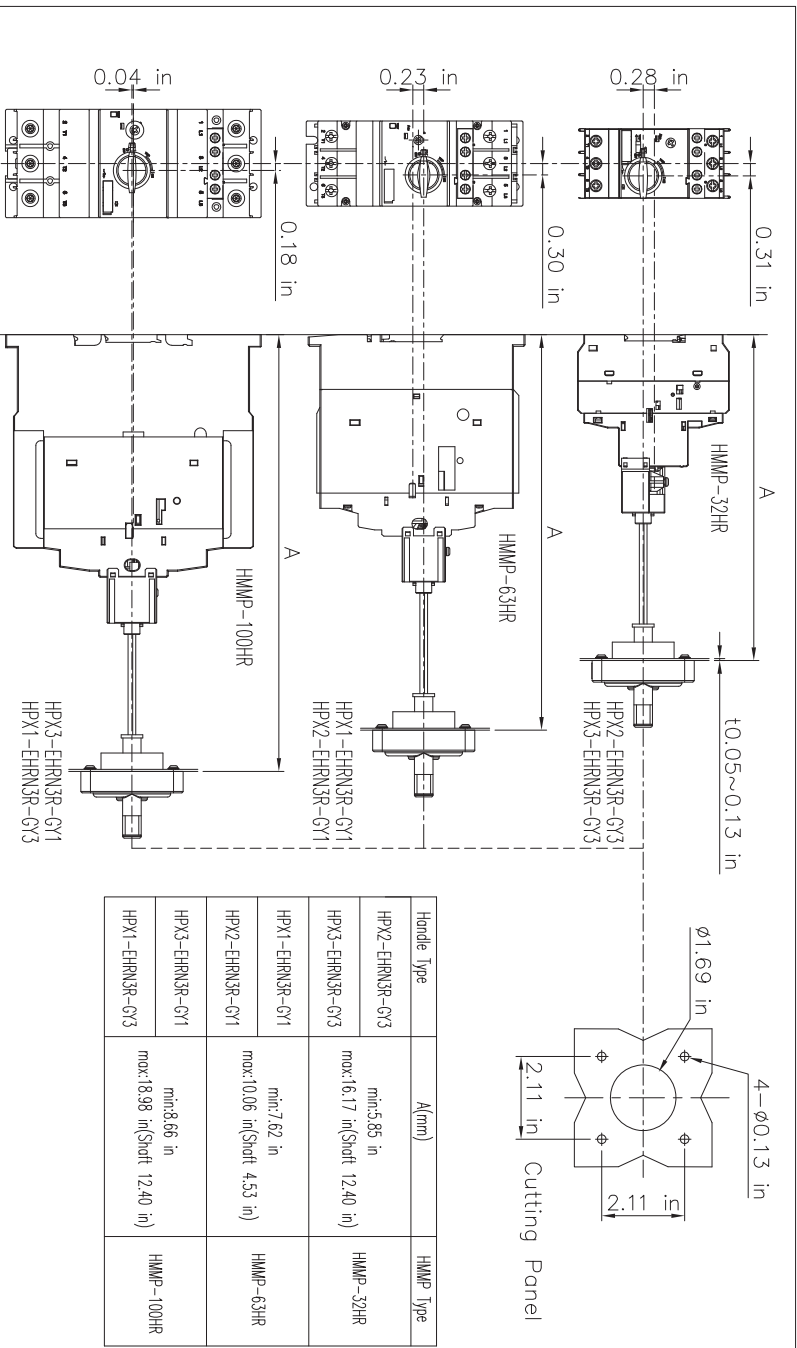
2. Installing the Extended Rotary Handle



3. Cutting Shaft and Installing the Handle



4. Dimensions

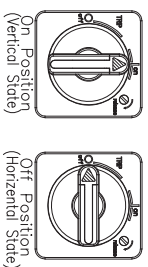


5. Locking System

Releasing(ot on position)

Locking

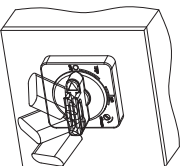
① Handle Setting



② Pushing

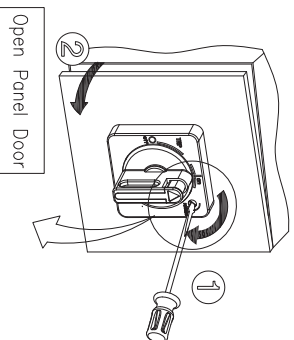
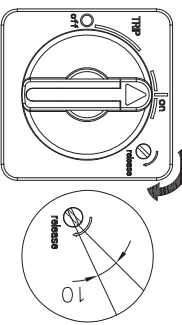


③ Locking



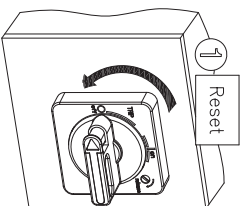
3 Φ4-8

Releasing

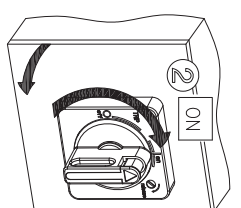


Open Panel Door

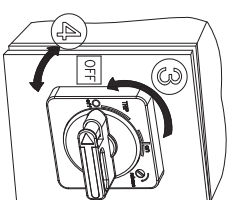
6. Operating Test



① Reset



② ON



④ OFF

CAUTION—*If the door is opened with much pressure when the position of handle is on or trip, the handle lock lever will be damaged.

On position : Panel door not open

Trip position : Panel door can't be opened
Off position : Panel door open & close available

Customer Center-Quick Responsive, Excellent technical support
TEL.1-800-633-0405 | Home page, <http://www.AutomationDirect.com>
Specifications in this catalog are subject to change without notice due to continuous product development and improvement.