

DATA SHEET

Premium Efficiency Motor: **MTSP-7P5-3BD18**

60 Hz

Document Generated: 22-Sep-2021

Document ID:

Customer:

MOTOR INFORMATION

HP	7.5
RPM	1800
Phase	3
Frequency	60
Voltage	230/460
Frame Size	213TC
Enclosure	TEFC
Degree of Protection	IP69K
Service Factor	1.15
Poles	4
Full Load Speed	1755
Insulation Class	F
Temp Rise	80°C
NEMA Code Letter	H
Duty Cycle	S1
Slip	2.50%
NEMA Design	B
Moment of Inertia	0.927 lb.ft. ²
Locked Rotor Time (Hot)	12 seconds
Sound Pressure Level	69 dB(A)
Number of Starts	12
Max Ambient Temperature	40° C
Max Elevation	1000 m.a.s.l (3300 f.a.s.l)
Mounting	F1
Rotation	Bidirectional
Area of Classification	Div.2 Class I, Gr. A,B,C&D T2B
Inverter Rating	10:1 CT/20:1 VT
Standard	NEMA MG1, UL1004
Approvals	CSA,UL,CE

EFFICIENCY/POWER FACTOR

LOAD	EFF	P. F.
100%	91.7 %	0.83
75%	92.0 %	0.75
50%	90.0 %	0.65

TORQUE

FULL LOAD	LRT	BDT
22 lb.ft.	225 %	270 %

AMPERAGE INFORMATION

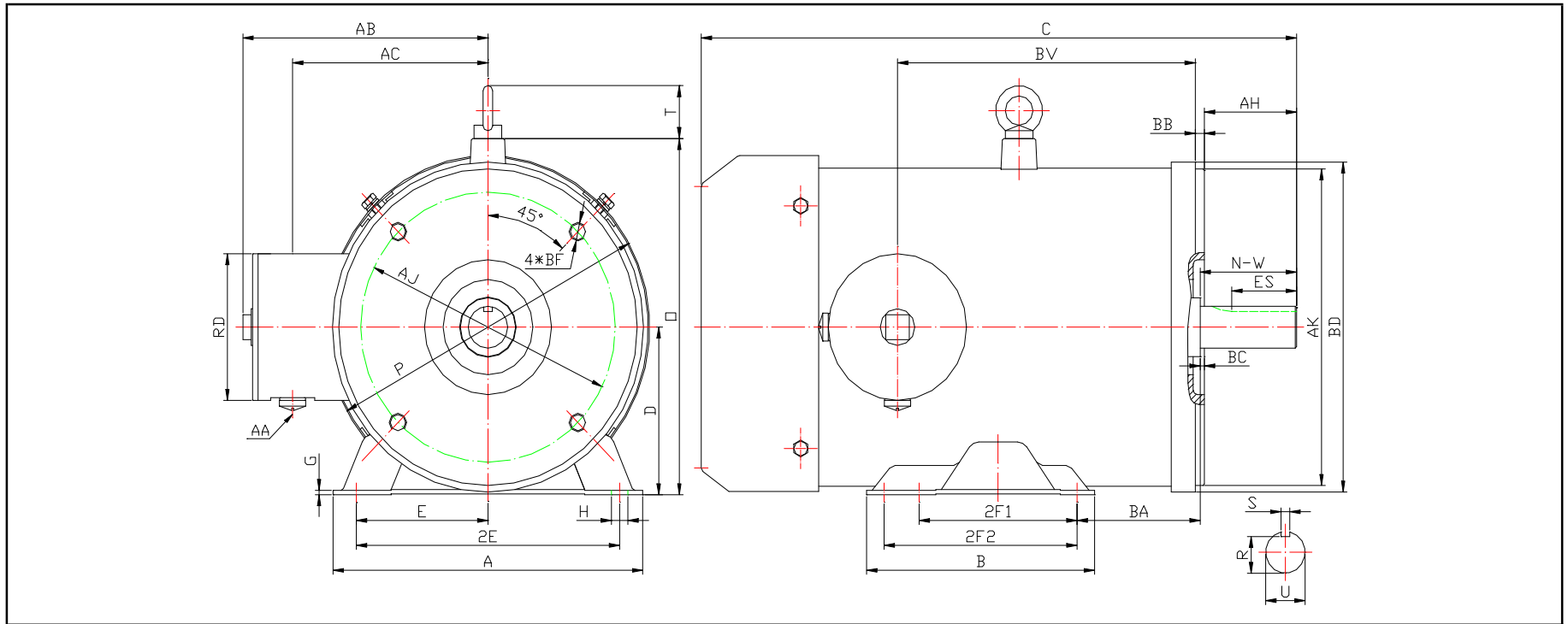
	230V	460V
Full Load Amps	18.6	9.3
Locked Rotor Amps	127	63.5
No Load Current	9.4	4.7
Usable at 208V	20	

BEARING INFORMATION

DE Bearing	6308 2RS
ODE Bearing	6208 2RS
Grease Type	Mobil Polyrex EM
DE Regreasing Interval	-- Hours
ODE Regreasing Interval	-- Hours
Grease Quantity	--

ADDITIONAL DATA

F2 Suitable	No
Shaft Material	304 Stainless Steel
Connection Diagram	9 Lead 2Y/Y
Approximate Weight	180 lbs.



DIMENSIONS - INCHES

MOUNTING					A	B	C	D	G	T	P	O	BC	AB
E	2F1	2F2	H	BA										
4.25	5.5	7	0.41	4.25	9.6	8.1	20.70	5.25	0.157	1.75	10.7	11.2	0.25	7.85

SHAFT & KEY					
S	ES	R	N-W	U	AH
0.312	2.41	1.201	3.38	1.375	3.12

TERMINAL BOX				
AA	AB	AC	RD	BV
1/2	7.85	6.41	3.95	11.15

FLANGE				
AK	BD	AJ	BF	BB
8.5	10.08	7.25	(4*)/2-13	0.25

PERFORMANCE CURVES

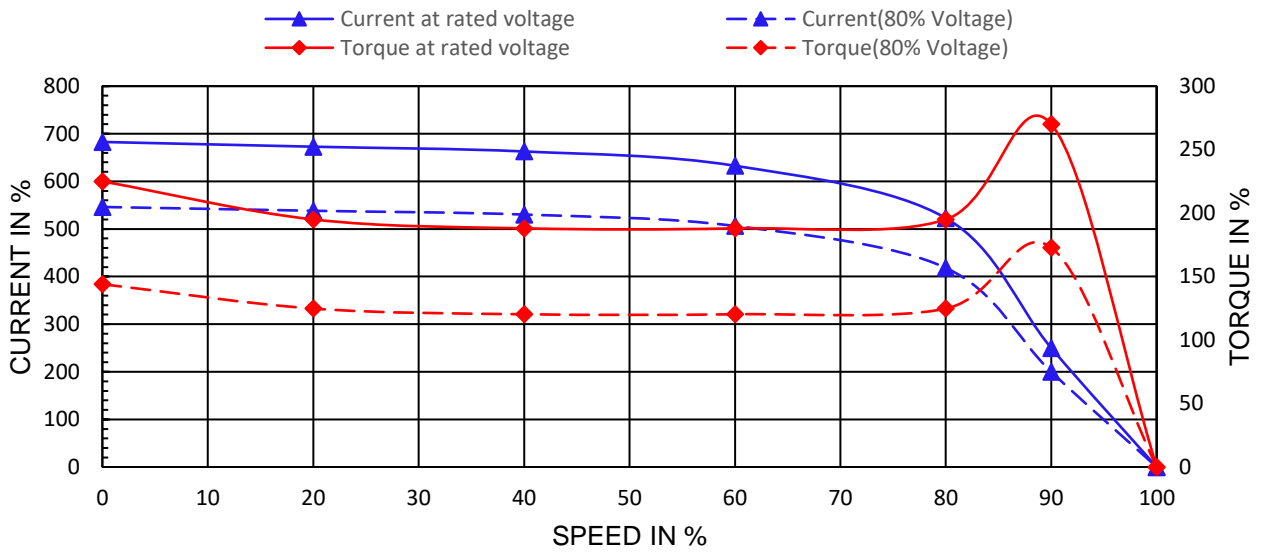
Premium Efficiency Motor: **MTSP-7P5-3BD18**

Document Generated: 22-Sep-2021
 Document ID:

Customer:

Motor Type	MTS		FL Speed	1755	
Output Rating (HP)	7.5		LRT (%FLT)	225	460 volt FLA 9.3
Full Load Torque	22	lb.ft	BDT (%FLT)	270	230 volt FLA 18.6
Rotor Wk^2	0.927	lb-ft^2			

SPEED VS TORQUE & CURRENT CURVE



OUTPUT VS EFF., P.F. & CURRENT CURVE

