

DATA SHEET

Premium Efficiency Motor: **MTSP-003-3BD12**

60 Hz

Document Generated: 22-Sep-2021

Document ID:

Customer:

MOTOR INFORMATION

HP	3
RPM	1200
Phase	3
Frequency	60
Voltage	230/460
Frame Size	213TC
Enclosure	TEFC
Degree of Protection	IP69K
Service Factor	1.15
Poles	6
Full Load Speed	1175
Insulation Class	F
Temp Rise	80°C
NEMA Code Letter	K
Duty Cycle	S1
Slip	2.08%
NEMA Design	B
Moment of Inertia	1.055 lb.ft. ²
Locked Rotor Time (Hot)	12 seconds
Sound Pressure Level	61 dB(A)
Number of Starts	12
Max Ambient Temperature	40° C
Max Elevation	1000 m.a.s.l (3300 f.a.s.l)
Mounting	F1
Rotation	Bidirectional
Area of Classification	Div.2 Class I, Gr. A,B,C&D T2B
Inverter Rating	10:1 CT/20:1 VT
Standard	NEMA MG1, UL1004
Approvals	CSA,UL,CE

EFFICIENCY/POWER FACTOR

LOAD	EFF	P. F.
100%	89.5 %	0.74
75%	87.0 %	0.62
50%	86.0 %	0.51

TORQUE

FULL LOAD	LRT	BDT
13.2 lb.ft.	250 %	280 %

AMPERAGE INFORMATION

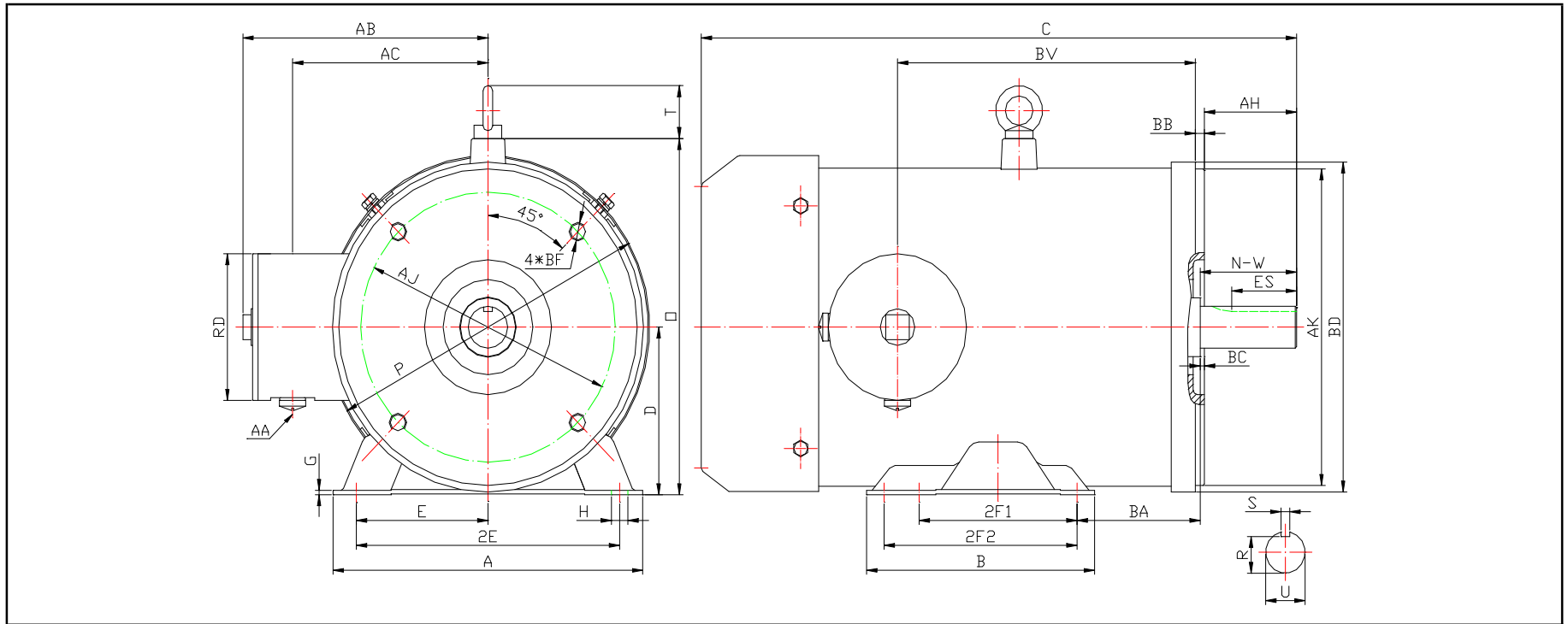
	230V	460V
Full Load Amps	9.2	4.6
Locked Rotor Amps	64	32
No Load Current	6	3
Usable at 208V	10	

BEARING INFORMATION

DE Bearing	6308 2RS
ODE Bearing	6208 2RS
Grease Type	Mobil Polyrex EM
DE Regreasing Interval	-- Hours
ODE Regreasing Interval	-- Hours
Grease Quantity	--

ADDITIONAL DATA

F2 Suitable	No
Shaft Material	304 Stainless Steel
Connection Diagram	9 Lead 2Y/Y
Approximate Weight	170 lbs.



DIMENSIONS - INCHES

MOUNTING					A	B	C	D	G	T	P	O	BC	AB
E	2F1	2F2	H	BA										
4.25	5.5	7	0.41	4.25	9.6	8.1	20.70	5.25	0.157	1.75	10.7	11.2	0.25	7.85

SHAFT & KEY					
S	ES	R	N-W	U	AH
0.312	2.41	1.201	3.38	1.375	3.12

TERMINAL BOX				
AA	AB	AC	RD	BV
1/2	7.85	6.41	3.95	11.15

FLANGE				
AK	BD	AJ	BF	BB
8.5	10.08	7.25	(4*)/2-13	0.25

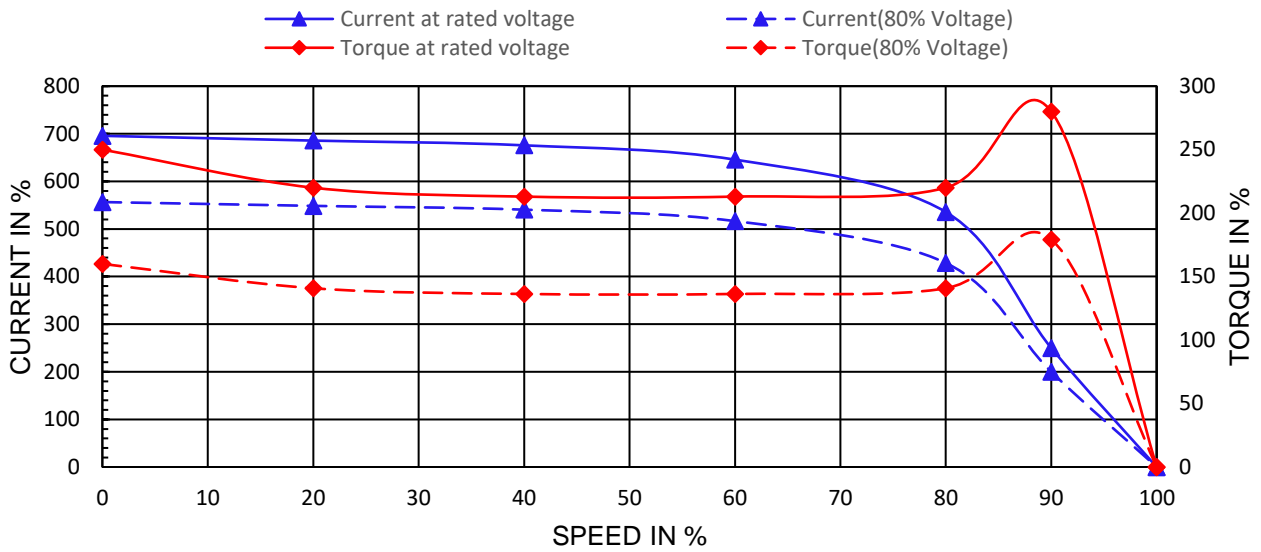
PERFORMANCE CURVES

Premium Efficiency Motor: **MTSP-003-3BD12**

Document Generated: 22-Sep-2021	Customer:
Document ID:	

Motor Type	MTS		FL Speed	1175	
Output Rating (HP)	3		LRT (%FLT)	250	460 volt FLA 4.6
Full Load Torque	13.2	lb.ft	BDT (%FLT)	280	230 volt FLA 9.2
Rotor Wk^2	1.055	lb-ft^2			

SPEED VS TORQUE & CURRENT CURVE



OUTPUT VS EFF., P.F. & CURRENT CURVE

